

NOTE: CHAINAGE ALONG E. PL OF ST. MARY'S RD.



EXISTING WATER SERVICE LOCATION RECORDS				
ADDRESS	SIZE/TYPE	SHORT/LONG	CORP. LOCATION	COMMENTS
1615 ST. MARY'S ROAD	38 COPPER	13.4m L OF R	16.2m E. OF VALVE	SERVICED OFF WOODYDELL
1616 ST. MARY'S ROAD	19 COPPER	0.9m NSL HOUSE	NO INFO AVAILABLE	NO INFO AVAILABLE

* SERVICE TO BE RENEWED, ALL OTHERS TO BE RECONNECTED

- CONSTRUCTION NOTES:
1. EXPOSE EXISTING WATERMAIN & CONFIRM INVERTS PRIOR TO CONSTRUCTION.
 2. CONFIRM LOCATION OF ALL SERVICES IN THE FIELD.
 3. INSTALL WATERMAIN BY TRENCHLESS METHODS.
 4. TRENCHES & EXCAVATIONS WITHIN 1 METRE OF A PAVED AREA INCLUDING SIDEWALKS SHALL BE CLASS 3 BACKFILL.
 5. ALL MATERIALS SHALL CONFORM TO THE CITY OF WINNIPEG STANDARD CONSTRUCTION SPECIFICATIONS.
 6. MINIMUM COVER TO TOP OF WATERMAIN SHALL BE 2.4 m.
 7. REPLACE ALL EXISTING LEAD SERVICES FROM PROPOSED WATERMAIN TO PL.
 8. NOTIFY ALL AFFECTED RESIDENTS AND BUSINESSES AT LEAST 24 HOURS IN ADVANCE OF ANY WATER SHUTDOWNS OR DISRUPTION OF SERVICE.

METRIC
WHOLE NUMBERS INDICATE MILLIMETRES
DECIMALIZED NUMBERS INDICATE METRES

WARNING

- IF POWER EQUIPMENT OR EXPLOSIVES ARE TO BE USED FOR EXCAVATION ON THIS PROJECT THE CONTRACTOR MUST:
1. NOTIFY THE GAS COMPANY OF THE PROPOSED LOCATION OF EXCAVATION.
 2. TAKE PRECAUTION TO AVOID DAMAGE TO GAS COMPANY INSTALLATIONS
SEE PROVINCIAL REGULATION 210/72 FOR DETAILS

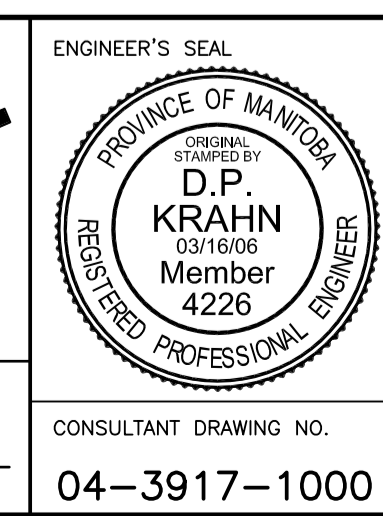
150 mm W.M.		150 mm W.M.		HYDRO		150 mm W.M.		150 mm W.M.	
⊕	WATERMAIN	⊕	WATERMAIN	— — — —	M.T.S.	— — — —	⊕	HYDRANT	— — — —
⊕	HYDRANT VALVE	⊕	HYDRANT VALVE	— — — —	CONCRETE	— — — —	⊕	CONCRETE	— — — —
— — — —	LAND DRAINAGE SEWER	— — — —	LAND DRAINAGE SEWER	— — — —	ASPHALT	— — — —	— — — —	LAND DRAINAGE SEWER	— — — —
— — — —	WASTE WATER SEWER	— — — —	WASTE WATER SEWER	— — — —	PROPERTY LINE	— — — —	— — — —	WASTE WATER SEWER	— — — —
○	MANHOLE	○	MANHOLE	— — — —	SURVEY BAR	— — — —	— — — —	PROPERTY LINE	— — — —
□	CATCH BASIN	□	CATCH BASIN	— — — —	SERVICE VALVE	— — — —	— — — —	SURVEY BAR	— — — —
▽	CURB INLET	▽	CURB INLET	— — — —	I.P.S.	— — — —	— — — —	SERVICE VALVE	— — — —
— — — —	JUNCTIONS	— — — —	JUNCTIONS	— — — —	BUILDING	— — — —	— — — —	I.P.S.	— — — —
— — — —	CULVERT	— — — —	CULVERT	— — — —		— — — —	— — — —	BUILDING	— — — —
— — — —	GAS	— — — —	GAS	— — — —		— — — —	— — — —		— — — —
— — — —	EXISTING	— — — —	LEGEND—PLAN	— — — —	PROPOSED	— — — —	EXISTING	LEGEND—PROFILE	— — — —
— — — —	LEGEND—PLAN	— — — —	PROPOSED	— — — —	EXISTING	— — — —	LEGEND—PROFILE	PROPOSED	— — — —

UNDERGROUND STRUCTURES	
SUPPLY, U/G STRUCTURES COMMITTEE	DATE

NOTE:
LOCATION OF UNDERGROUND STRUCTURES AS SHOWN ARE BASED ON THE BEST INFORMATION AVAILABLE, BUT NO GUARANTEE IS GIVEN THAT ALL EXISTING UTILITIES ARE SHOWN OR THAT THE GIVEN LOCATIONS ARE EXACT. CONFIRMATION OF EXISTENCE AND EXACT LOCATION OF ALL SERVICES MUST BE OBTAINED FROM THE INDIVIDUAL UTILITIES BEFORE PROCEEDING WITH CONSTRUCTION.

B.M. ELEV.	

DESIGNED BY	J.K. MORRIS
DRAWN BY	J.K. MORRIS
CHECKED BY	
APPROVED BY	
HOR. SCALE	1:250
VERTICAL	1:50
DATE	FEBRUARY 2006



THE CITY OF WINNIPEG
WATER AND WASTE DEPARTMENT

ST. MARY'S ROAD
WATERMAIN RENEWAL

WOODYDELL AVE. TO RIVER RD.
STA. 0+160 TO WOODYDELL AVE.

CITY DRAWING NUMBER
D-8897

SHEET **16** OF **16**

BID OPPORTUNITY
6-2006

CONSULTANT DRAWING NO.
04-3917-1000

DATE: MARCH 16, 2006