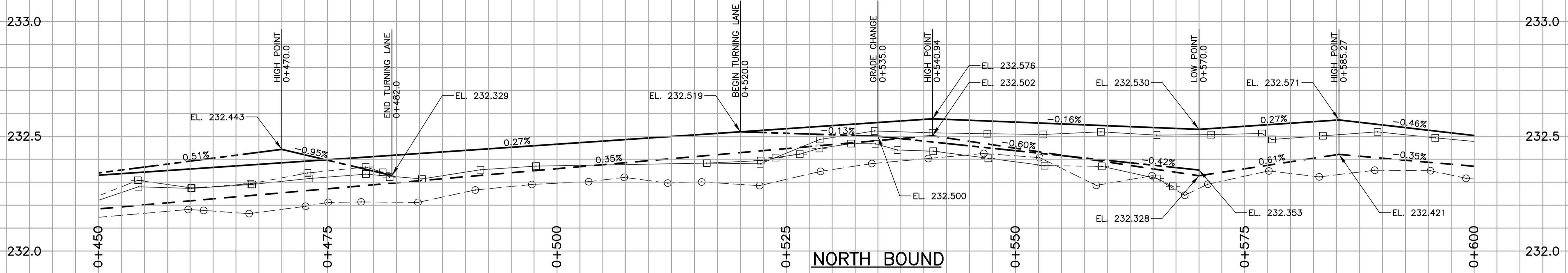
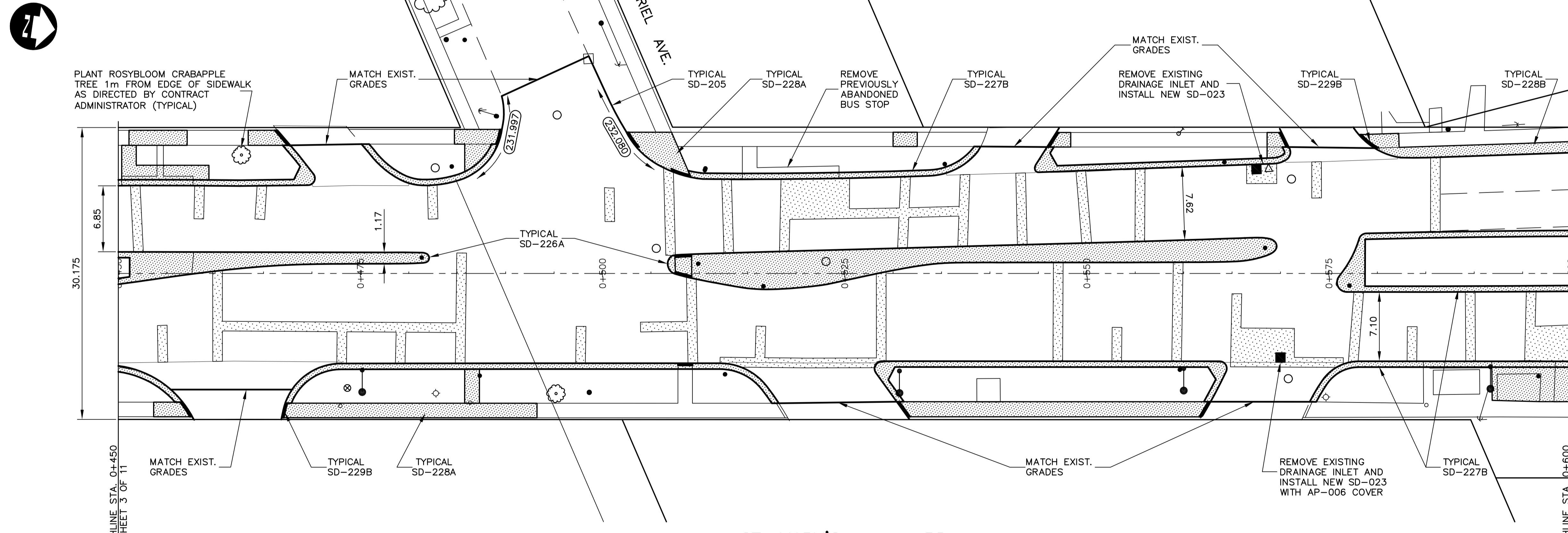


SOUTH BOUND



NORTH BOUND



ST. MARY'S RD.

- NOTES:**
- STATIONING IN CENTER OF ST. MARY'S RD. R.O.W. UNLESS NOTED OTHERWISE.
 - S.E. PROPERTY LINE OF ST. MARY'S RD. AND GREENWOOD AVE. = STA. 0+100.0.
 - SEE DWG P3257-11 FOR TYPICAL CROSS SECTIONS AND DETAILS.
 - FINAL CURB HEIGHT TO BE 150mm OR LOWER IN AREAS WHERE DRAINAGE MUST BE MAINTAINED.
 - ALL DIMENSIONS ARE TO BACK OF CURB.
 - ISOLATE MISCELLANEOUS ITEMS IN NEW CONCRETE WORKS AS PER SD-228C.
 - PLANE EXISTING ASPHALT OVERLAY WITHIN CONTRACT LIMITS TO DEPTHS INDICATED BY THE CONTRACT ADMINISTRATOR. NOT ALL AREAS WILL REQUIRE PLANING.
 - LEGAL PLAN AND UNDERGROUND INFORMATION FROM CITY OF WINNIPEG LBIS.
 - MOISTURE BARRIER/STRESS ABSORPTION GEOTEXTILE FABRIC INSTALLED ON BOTH SOUTHBOUND LANES BETWEEN STA. 0+510 AND 0+615.

METRIC
WHOLE NUMBERS INDICATE MILLIMETRES
DECIMALIZED NUMBERS INDICATE METRES

150 mm W.M.	WATERMAIN	150 mm W.M.	HYDRO	150 mm W.M.	WATERMAIN	150 mm W.M.
300 mm L.O.S.	LAND DRAINAGE SEWER	300 mm L.O.S.	M.T.S.	300 mm L.O.S.	LAND DRAINAGE SEWER	300 mm L.O.S.
250 mm W.W.S.	WASTE WATER SEWER	250 mm W.W.S.	CONCRETE	250 mm W.W.S.	WASTE WATER SEWER	250 mm W.W.S.
○	MANHOLE	●	ASPHALT	○	MANHOLE	○
□	CATCH BASIN	■	PLANING	□	CATCH BASIN	□
▽	CURB INLET	▼	SIDEWALK	▽	CURB INLET	▽
+	JUNCTIONS	+	PAVING STONES	+	JUNCTIONS	+
—	CULVERT	—	PARTIAL DEPTH REPAIR	—	CULVERT	—
—	GAS	—	PROPERTY LINE	—	GAS	—
—	EXISTING	—	SURVEY BAR	—	EXISTING	—
—	LEGEND-PLAN	—	PARAPLEGIC RAMP	—	LEGEND-PROFILE	—
—	PROPOSED	—	LEGEND-PLAN	—	PROPOSED	—
—	EXISTING	—	LEGEND-PROFILE	—	EXISTING	—
—	PROPOSED	—	PROPOSED	—	PROPOSED	—

UNDERGROUND STRUCTURES

B.M. 62-037
ELEV. 231.811m

DESIGNED BY: D.B. WIEBE
DRAWN BY: A.J. PORCO
CHECKED BY: D.P. KRAHN
APPROVED BY:

DILLON CONSULTING

PROVINCE OF MANITOBA
REGISTERED PROFESSIONAL ENGINEER
D.B. WIEBE
03/16/06
Member 22480

THE CITY OF WINNIPEG
PUBLIC WORKS DEPARTMENT

ST. MARY'S ROAD
STREET RENEWAL
DUNKIRK DR. TO GREENDELL AVE.
STA. 0+450 TO STA. 0+600

CITY DRAWING NUMBER: P-3257-04
SHEET 04 OF 16

CONSULTANT PROJECT NO. 04-3917-1000

RELEASING AUTHORITY: DATE

NO. REVISIONS: 2 ISSUED FOR TENDER 03/14/06 DBW
1 ISSUED FOR REVIEW 03/01/06 DBW

HOR. SCALE: 1 : 250
VERTICAL: 1 : 10

DATE: 11/15/04