

- NOTES:**
1. STATIONING IN CENTER OF ST. MARY'S RD. R.O.W. UNLESS NOTED OTHERWISE.
 2. S.E. PROPERTY LINE OF ST. MARY'S RD. AND GREENWOOD AVE. = STA. 0+100.0.
 3. SEE DWG P3257-11 FOR TYPICAL CROSS SECTIONS AND DETAILS.
 4. FINAL CURB HEIGHT TO BE 150mm OR LOWER IN AREAS WHERE DRAINAGE MUST BE MAINTAINED.
 5. ALL DIMENSIONS ARE TO BACK OF CURB.
 6. ISOLATE MISCELLANEOUS ITEMS IN NEW CONCRETE WORKS AS PER SD-228C.
 7. PLANE EXISTING ASPHALT OVERLAY WITHIN CONTRACT LIMITS TO DEPTHS INDICATED BY THE CONTRACT ADMINISTRATOR. NOT ALL AREAS WILL REQUIRE PLANING.
 8. LEGAL PLAN AND UNDERGROUND INFORMATION FROM CITY OF WINNIPEG LBIS.
 9. MOISTURE BARRIER/STRESS ABSORPTION GEOTEXTILE FABRIC INSTALLED ON BOTH SOUTHBOUND LANES BETWEEN STA. 0+510 AND 0+615.

METRIC
WHOLE NUMBERS INDICATE MILLIMETRES
DECIMALIZED NUMBERS INDICATE METRES

150 mm W.M.	WATERMAIN	150 mm W.M.	HYDRO	150 mm W.M.	WATERMAIN	150 mm W.M.
300 mm L.O.S.	LAND DRAINAGE SEWER	300 mm L.O.S.	CONCRETE	300 mm L.O.S.	LAND DRAINAGE SEWER	300 mm L.O.S.
250 mm W.W.S.	WASTE WATER SEWER	250 mm W.W.S.	ASPHALT	250 mm W.W.S.	WASTE WATER SEWER	250 mm W.W.S.
○	MANHOLE	●	PLANING	○	MANHOLE	○
□	CATCH BASIN	■	SIDEWALK	□	CATCH BASIN	□
▽	CURB INLET	▼	PAVING STONES	▽	CURB INLET	▽
+	JUNCTIONS	+	PARTIAL DEPTH REPAIR	+	JUNCTIONS	+
—	CULVERT	—	PROPERTY LINE	—	CULVERT	—
—	GAS	—	SURVEY BAR	—	GAS	—
—	EXISTING	—	PARAPLEGIC RAMP	—	EXISTING	—
—	LEGEND-PLAN	—	LEGEND-PLAN	—	LEGEND-PROFILE	—
—	PROPOSED	—	PROPOSED	—	PROPOSED	—

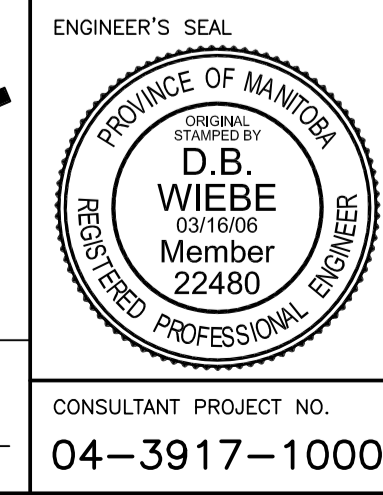
UNDERGROUND STRUCTURES

SUPV. U/G STRUCTURES COMMITTEE DATE

NOTE:
LOCATION OF UNDERGROUND STRUCTURES AS SHOWN ARE BASED ON THE BEST INFORMATION AVAILABLE. BUT NO GUARANTEE IS GIVEN THAT ALL EXISTING UTILITIES ARE SHOWN OR THAT THE GIVEN LOCATIONS ARE EXACT. CONFIRMATION OF EXISTENCE AND EXACT LOCATION OF ALL SERVICES MUST BE OBTAINED FROM THE INDIVIDUAL UTILITIES BEFORE PROCEEDING WITH CONSTRUCTION.

B.M.	62-037
ELEV.	231.811m

DESIGNED BY	D.B. WIEBE
DRAWN BY	A.J. PORCO
CHECKED BY	D.P. KRAHN
APPROVED BY	
HOR. SCALE	1 : 250
VERTICAL	1 : 10
RELEASSED FOR CONSTRUCTION	



THE CITY OF WINNIPEG
PUBLIC WORKS DEPARTMENT

Winnipeg

ST. MARY'S ROAD
STREET RENEWAL

DUNKIRK DR. TO GREENDELL AVE.
BISHOP GRANDIN BLVD. TO STA. 1+110

CITY DRAWING NUMBER
P-3257-07

SHEET **07** OF **16**

CONSULTANT PROJECT NO.
04-3917-1000