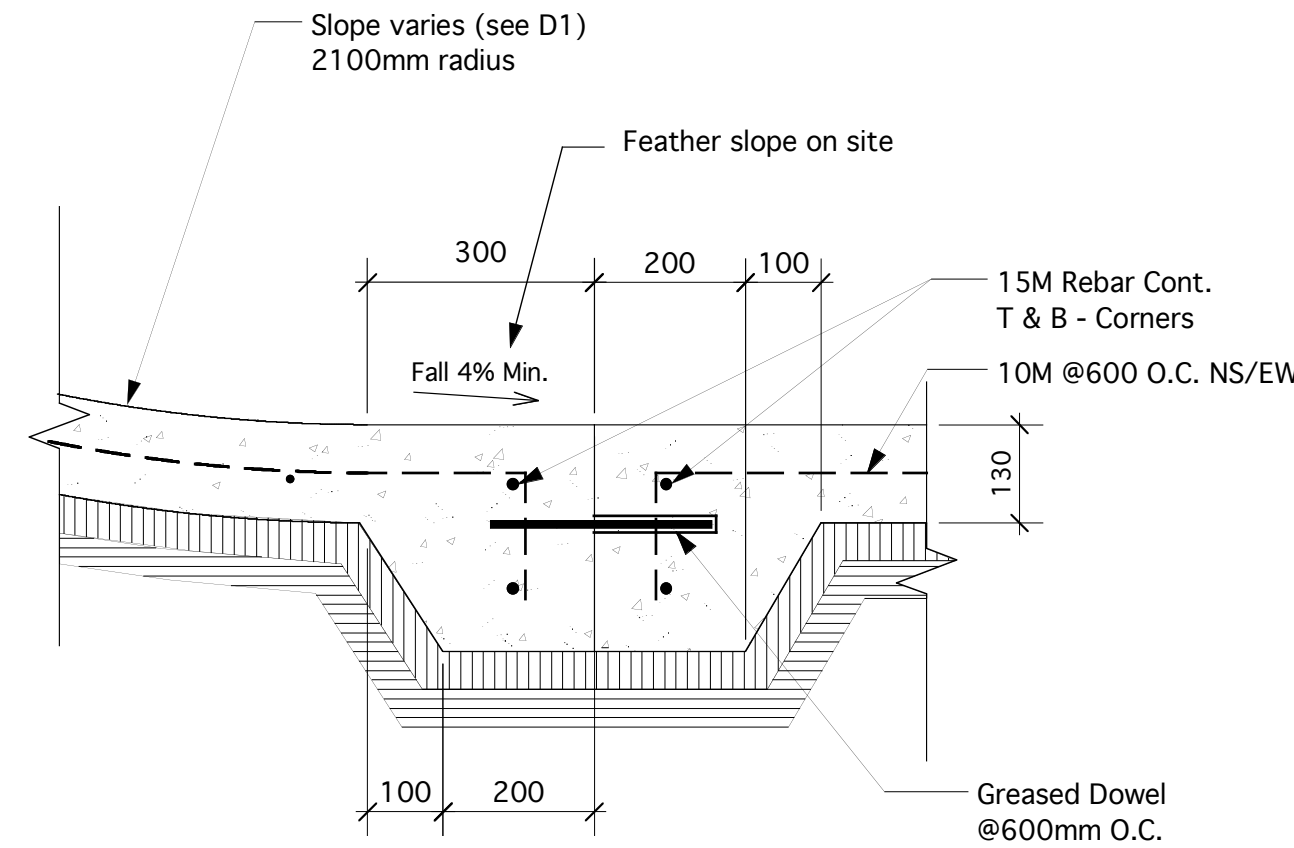
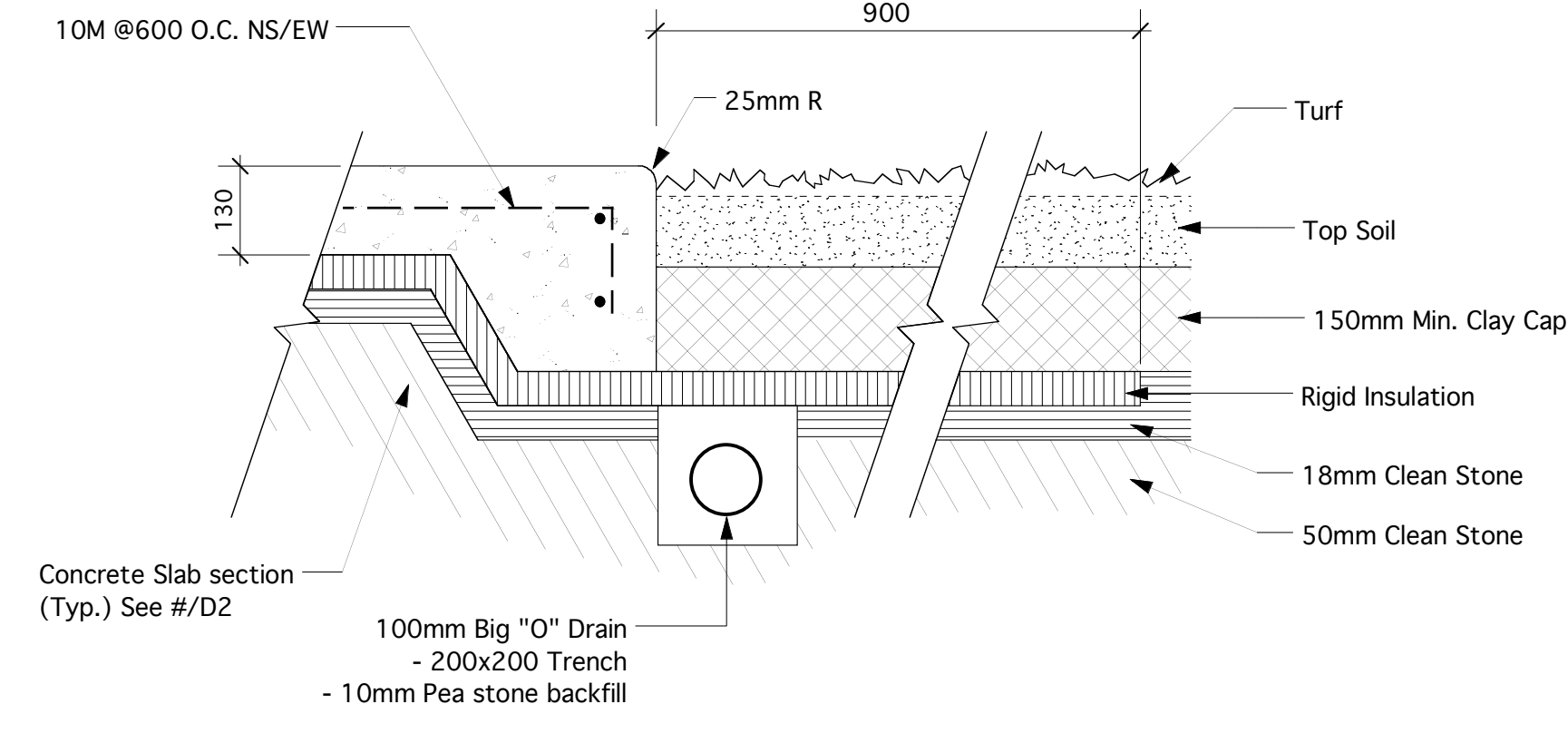


1 TYP. CONCRETE SLAB SECTION
D2 Scale: 1:10



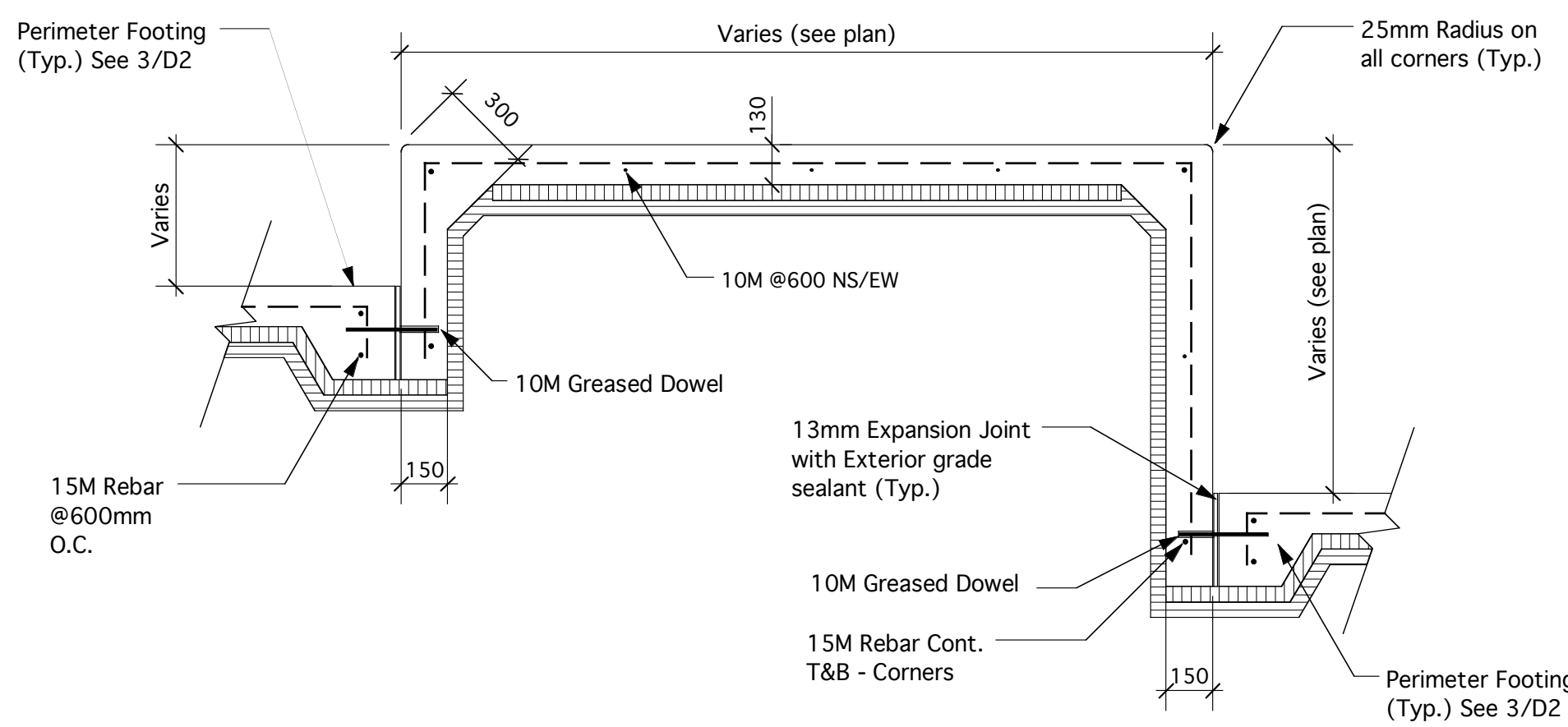
2 TOE CONNECTION / COLD JOINT
D2 Scale: 1:10



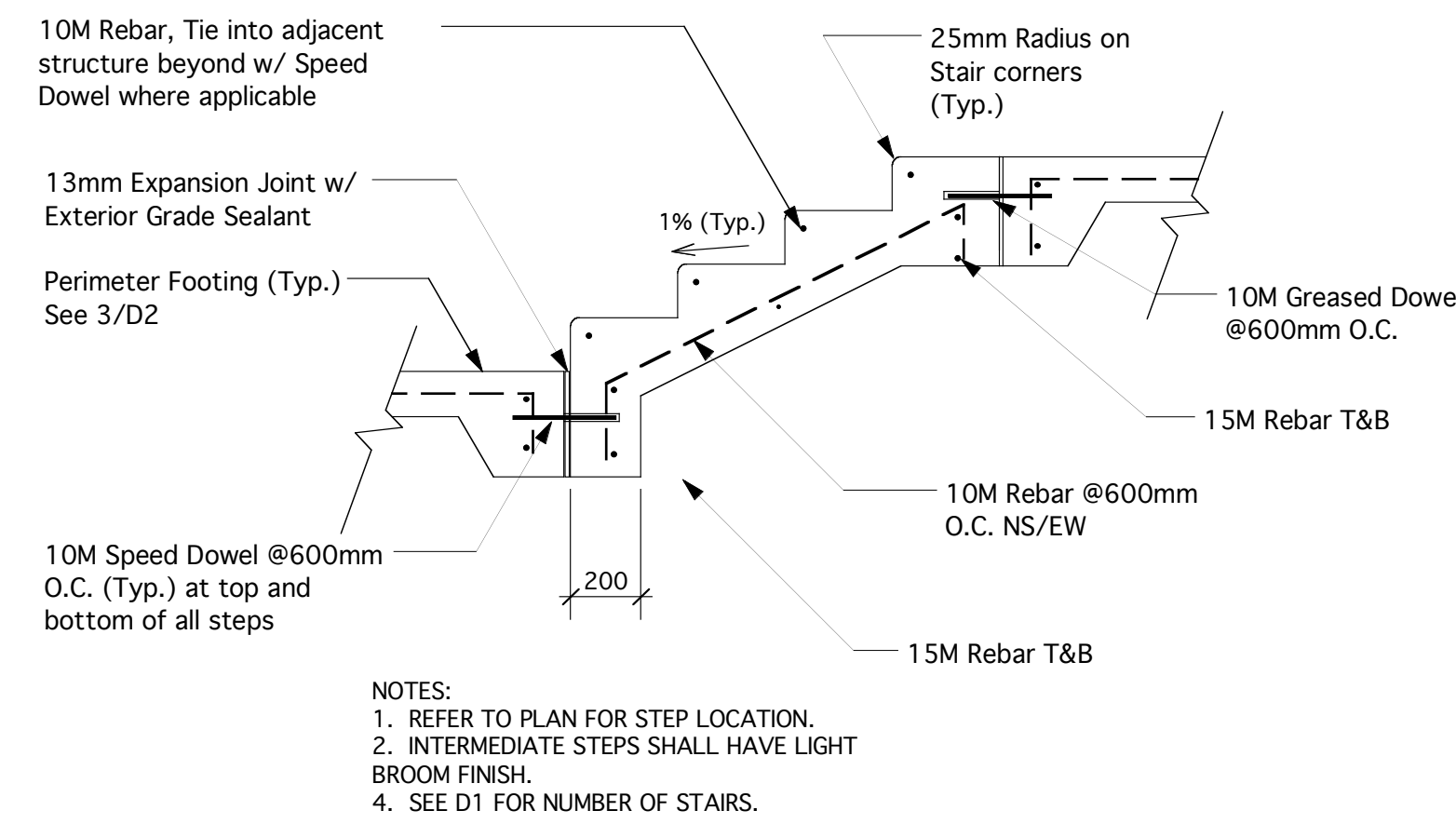
3 PERIMETER FOOTING / SLAB PERIMETER DETAIL
D2 Scale: 1:10

CAST-IN-PLACE CONCRETE

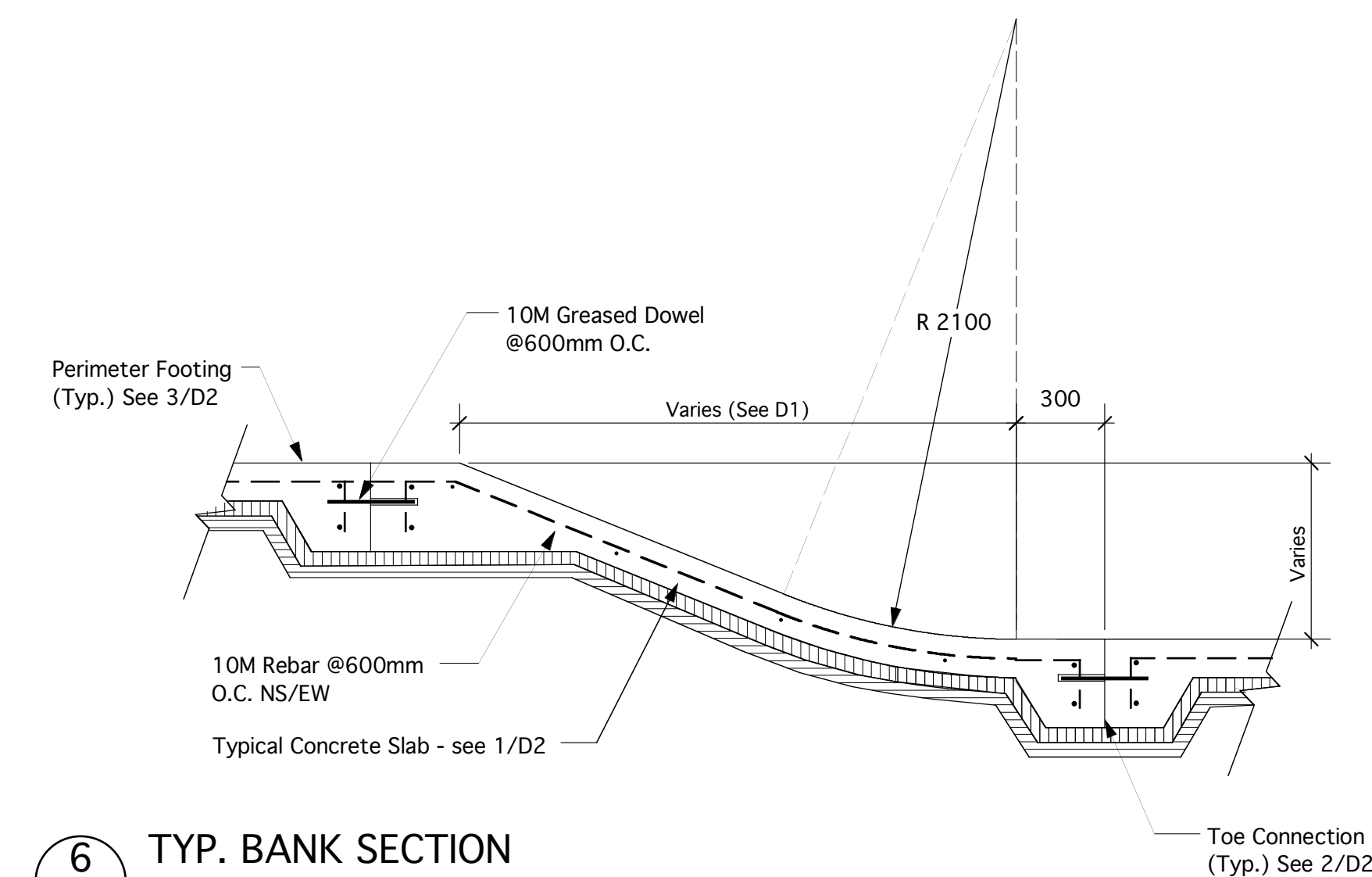
- I CONCRETE
- ALL CONCRETE IS TO BE MANUFACTURED AND INSTALLED IN ACCORDANCE WITH THE LATEST EDITION OF CAN3-CSA A23.1 "CONCRETE MATERIALS AND METHODS OF CONCRETE CONSTRUCTION" AND CAN3-CSA A23.2 "METHOD OF TEST FOR CONCRETE" ON THE DRAWINGS.
 - CONCRETE STRENGTHS AT 28 DAYS SHALL BE AS FOLLOWS UNLESS NOTED OTHERWISE ON THE DRAWINGS.
EXTERIOR SLABS: 35 MPA; WATER/CEMENT RATIO 0.40
SLUMP MAX. 90 MM;
AGGREGATE MAX. 20 MM;
ENTRAINED AIR/CATEGORY: 1
CLASS OF EXPOSURE: C-1
 - AIR ENTRAINING ADMIXTURES SHALL CONFORM TO THE REQUIREMENTS OF ASTM C260 "STANDARD SPECIFICATION FOR AIR ENTRAINING ADMIXTURES FOR CONCRETE". SUPERPLASTICIZING ADMIXTURES SHALL CONFORM TO ASTM C494/C494M-99a "STANDARD SPECIFICATION FOR CHEMICAL ADMIXTURES FOR CONCRETE", OR ASTM C1017/C1017M-99 "STANDARD SPECIFICATION FOR CHEMICAL ADMIXTURES FOR USE IN PRODUCING FLOWING CONCRETE" WHEN FLOWING CONCRETE IS APPLICABLE. AIR ENTRAINING ADMIXTURES TO HAVE A DURABILITY FACTOR GREATER THAN 75, WHEN TESTED TO ASTM STANDARDS C666 PROCEDURE A. SPACING FACTOR FOR ANY AIR ENTRAINING ADMIXTURE MUST BE 0.17MM OR LESS WHEN TESTED IN ACCORDANCE WITH ASTM C457 "STANDARD TEST METHOD FOR MICROSCOPICAL DETERMINATION OF PARAMETERS OF THE AIR-VOID SYSTEM IN HARDENED CONCRETE".
- II REINFORCING STEEL
- ALL REINFORCING STEEL TO BE CSA G30.18M 300 MPA DEFORMED BARS. ALL REINFORCING IS TO BE DETAILED IN ACCORDANCE WITH THE LATEST EDITION OF THE ACI DETAILING MANUAL, EXCEPT OTHERWISE NOTED.
 - ALL REINFORCING TO BE HELD IN PLACE, AND TIED BY THE USE OF PROPER ACCESSORIES, SUCH AS HI-CHAIRS, SPACERS, ETC. TO BE SUPPLIED BY THE REINFORCING STEEL FABRICATOR.
- III FORMWORK
- ALL CONSTRUCTION JOINT KEYS ARE TO BE A MINIMUM OF 1 1/2 IN. DEEP.



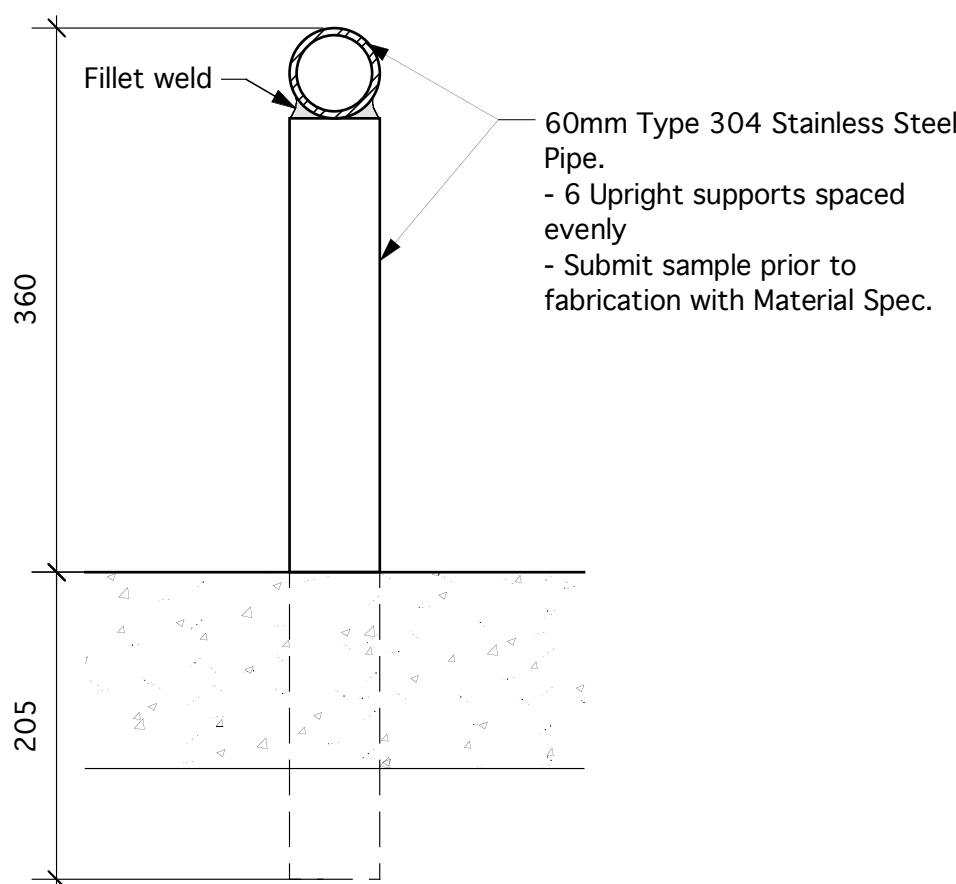
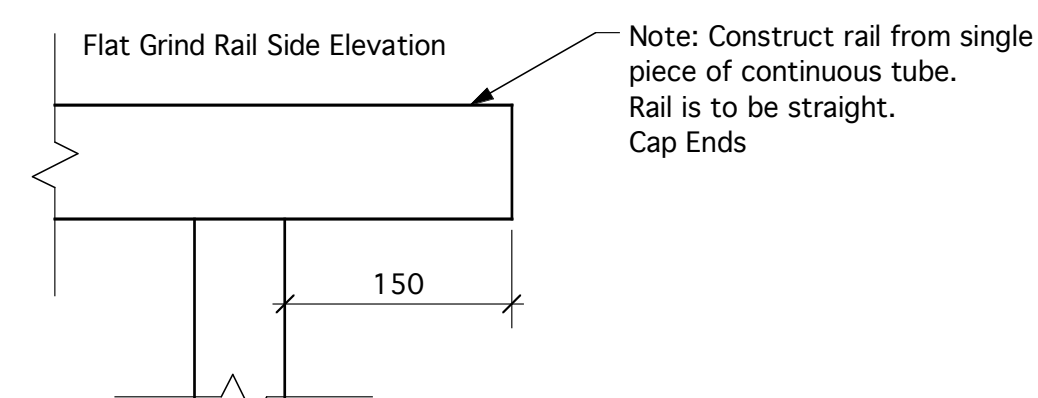
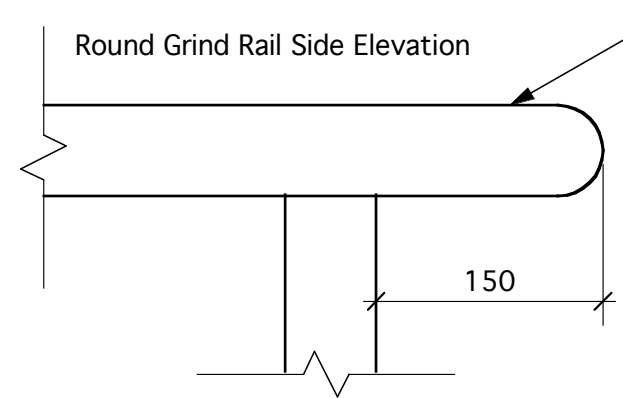
4 DECK SECTION TYP.
D2 Scale: 1:20



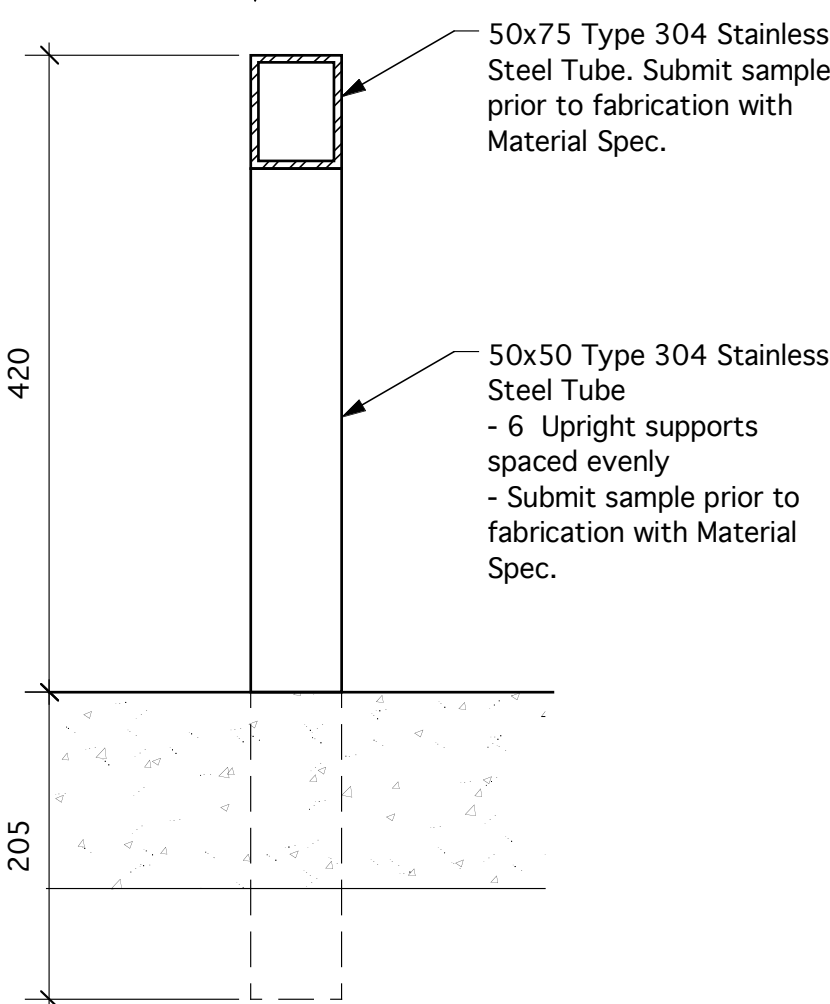
5 STAIR LEDGE DETAIL
D2



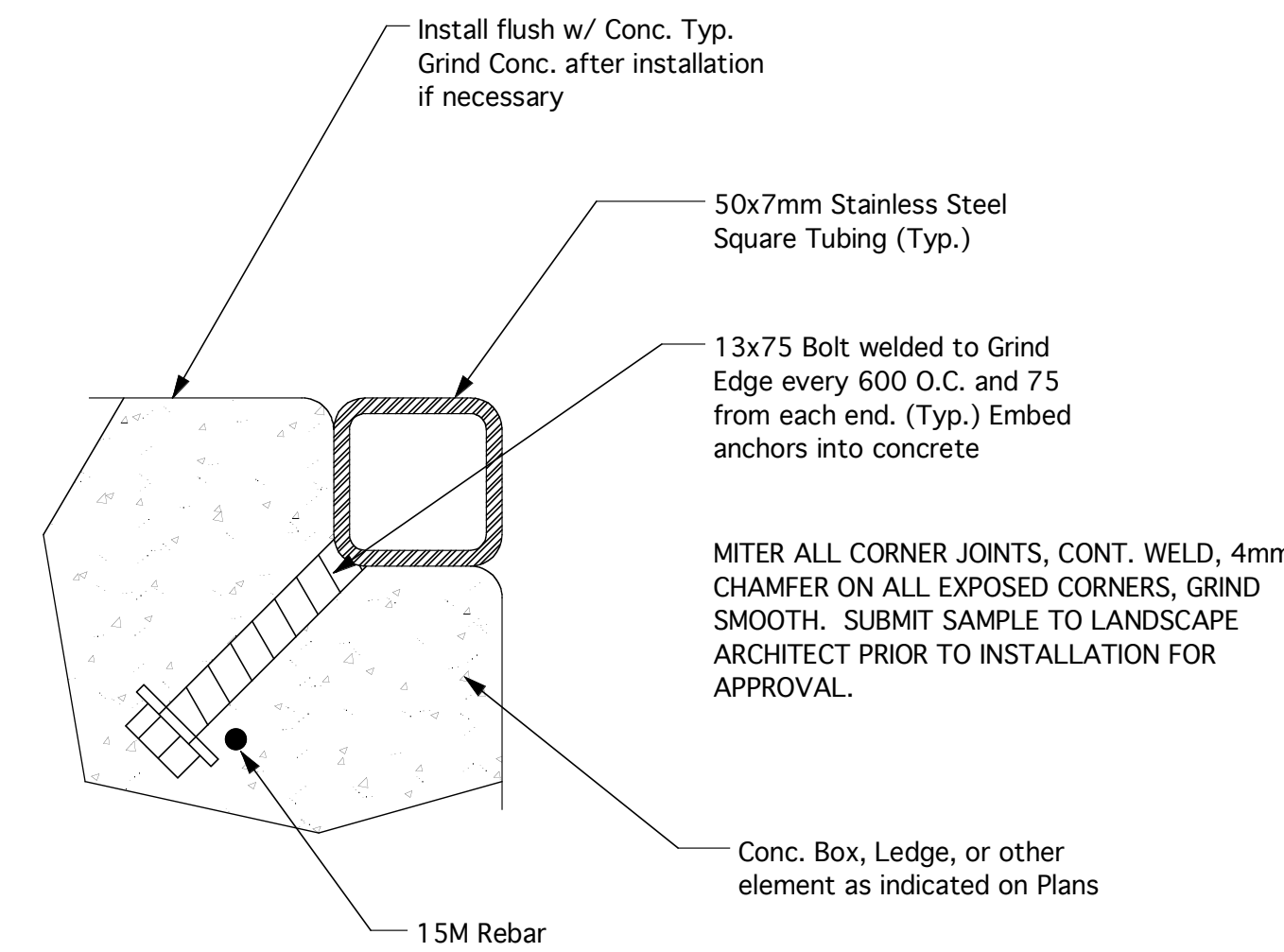
6 TYP. BANK SECTION
D2 Scale: 1:20



7 PRE-FAB ROUND GRIND RAIL
D2



8 PRE-FAB FLAT GRIND RAIL
D2



9 SQUARE GRIND EDGE
D2 NTS

DO NOT SCALE DRAWINGS

revisions	description	date
5		
4	Released for Tender	15-09-06
3	99% Review	6-09-06
2	90% Review	24-08-06
1	80% Review	31-07-06
0	70% Review	27-07-06

SARGENT PARK SKATEPARK
WINNIPEG, MANITOBA

approved by
designed by
drawn by
date 25 August 2006



CONSTRUCTION DETAILS

project no.	sheet	revision no.
0517	D2	0