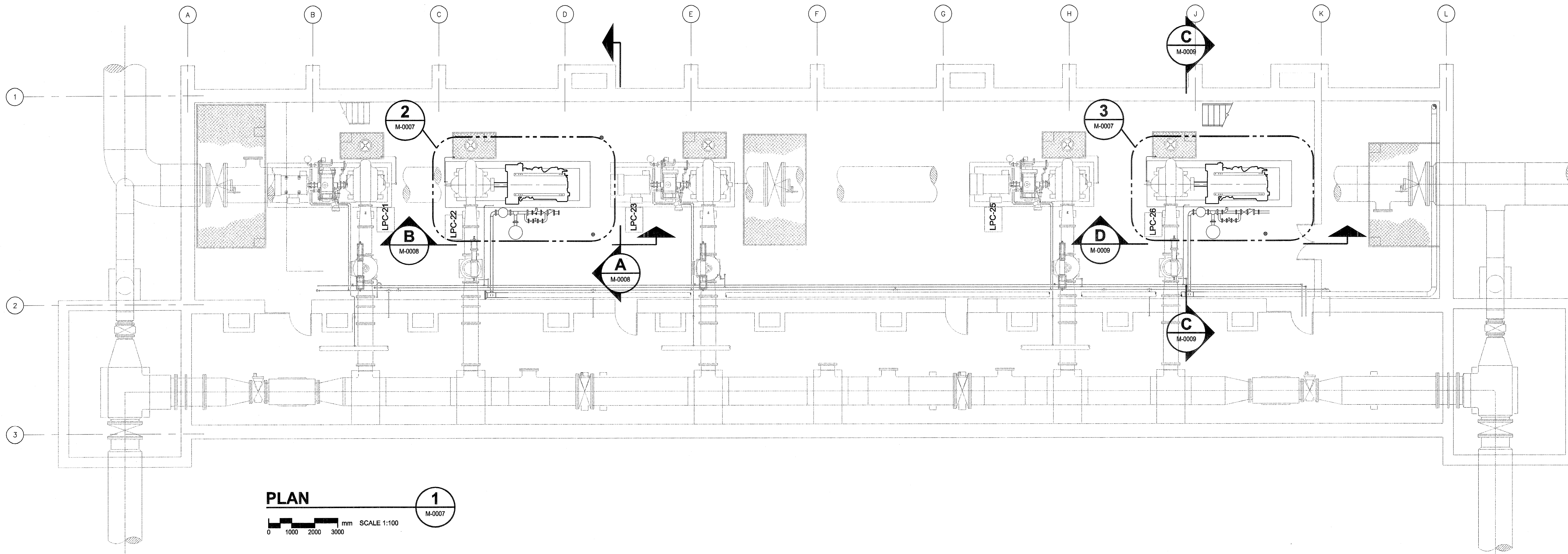


D SIZE 22" x 34" (559mm x 864mm)

PLOT: 07/06/15 9:20:47 AM

UMA FILE NAME: D265-199-00_01-M-0007_RX.dwg Saved By: rpostlet



PLAN
SCALE 1:100
M-0007

IMPORTANT: ASBESTOS NOTIFICATION AND ACKNOWLEDGMENT

Every effort has been made to identify known asbestos containing materials within the area of the proposed work. As a precautionary measure, where material is encountered by trades and contractors that is suspected or suspicious, the Trade/Contractor/Subcontractor is to contact the Contract Administrator who will have samples taken and tested to confirm its composition.

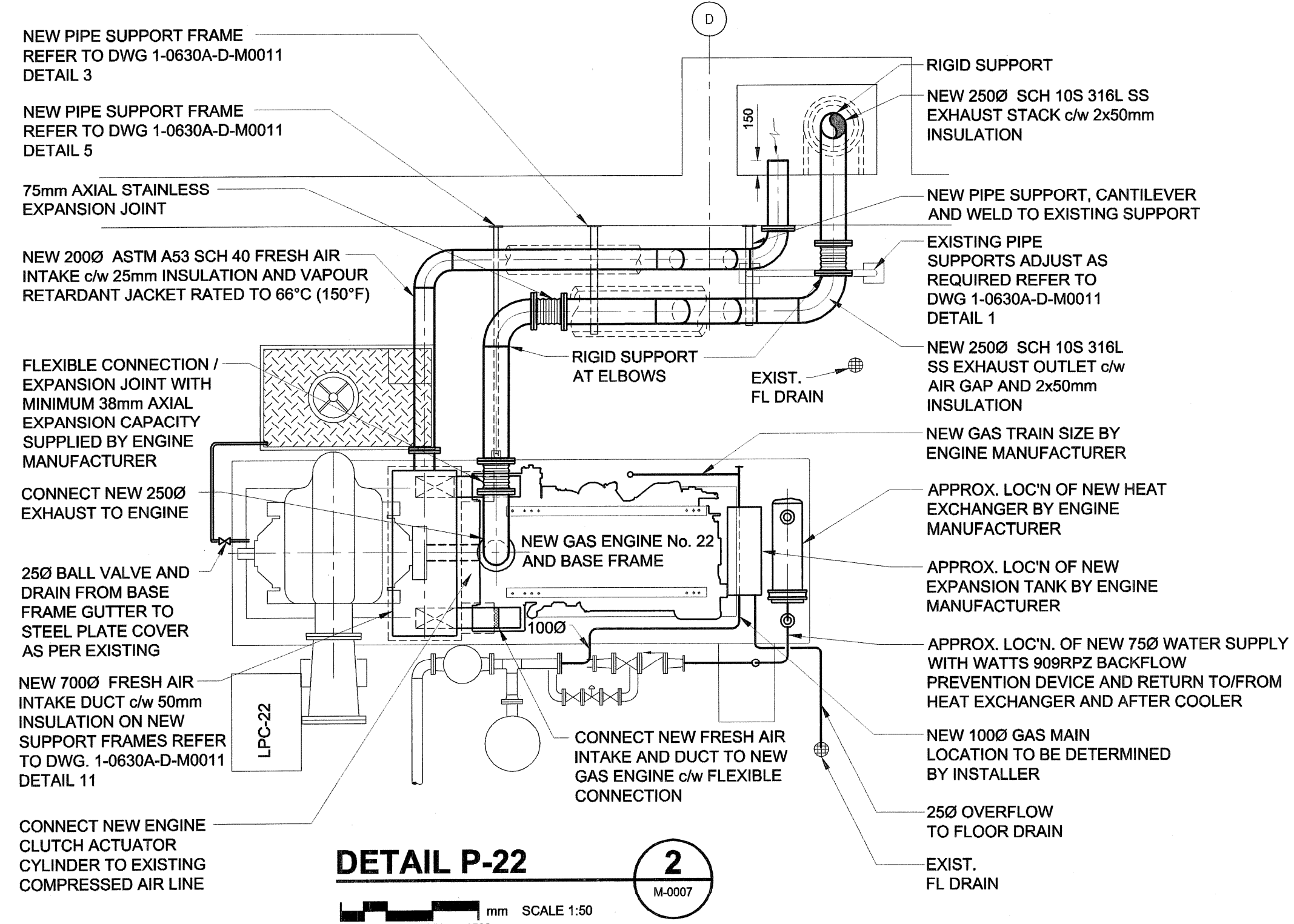
Mo. Reg. 53-88 (Workplace Health Hazard Regulation), Mo. Reg. 100-88R (Fibrosis and Silicosis Regulation) and associated Guidelines apply to all maintenance and renovation work that may disturb asbestos or suspected asbestos-containing materials in the Workplace. Such regulations and guidelines state that any disturbance of asbestos-containing materials may only be performed by workers or by an outside contractor who have first received the required training in asbestos-related precautions.

WORKING WITH ASBESTOS CAN BE DANGEROUS. INHALING ASBESTOS FIBERS CAN CAUSE VARIOUS TYPES OF LUNG DISEASE INCLUDING CANCER. SMOKING INCREASES THE RISK OF LUNG CANCER FROM ASBESTOS EXPOSURE.

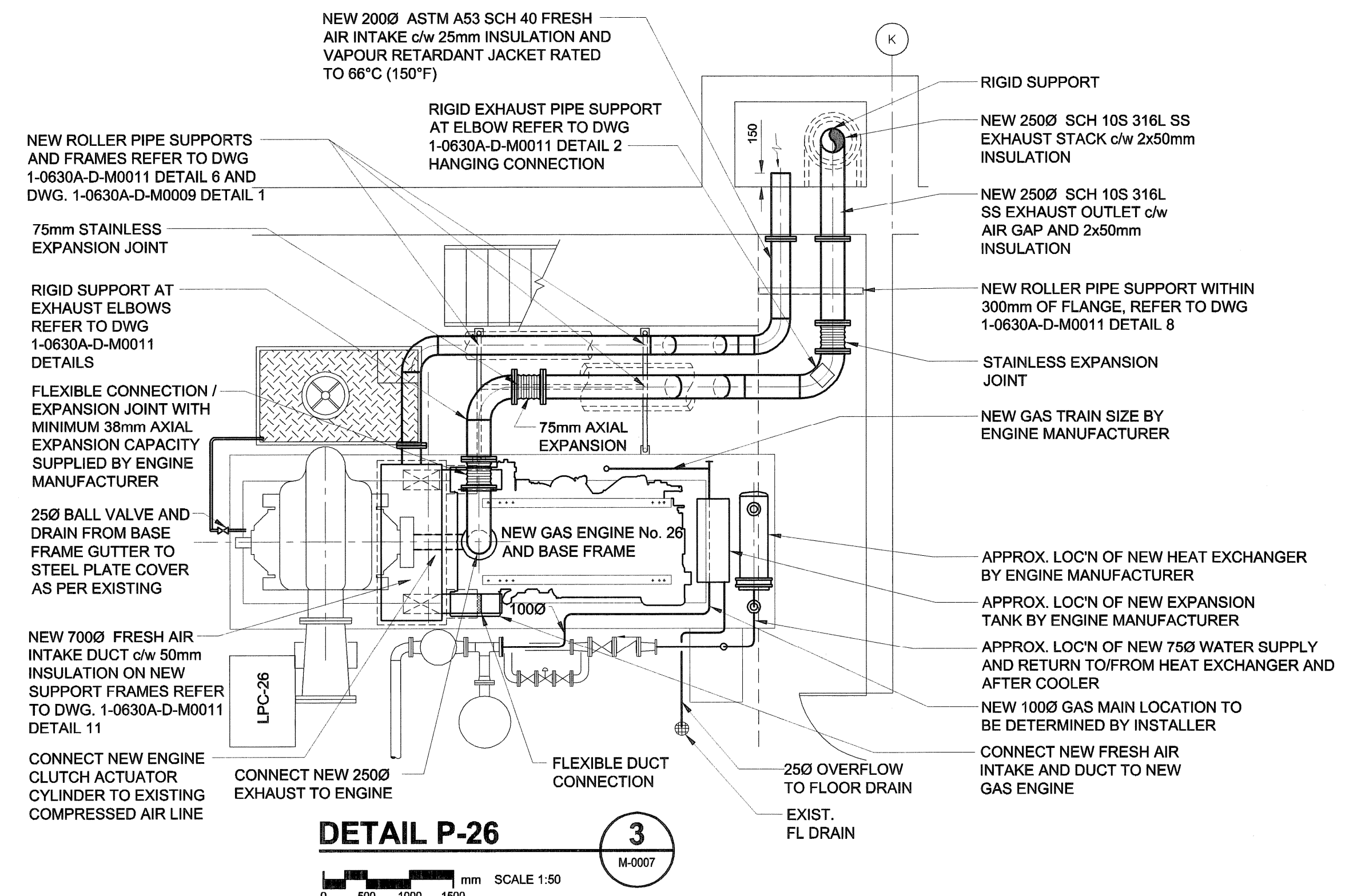
ACKNOWLEDGMENT:

In undertaking the work of this project, we the trade or contractor agree to perform our work in such a manner so as NOT to disturb any asbestos-containing materials without:

- giving notice to the appropriate supervisor, individual manager and/or project coordinator at the Water And Waste Department that known or suspected asbestos-containing material(s) will be needed to be disturbed, or
- halting work and giving notice to the Contract Administrator when unforeseen suspected asbestos-containing materials are uncovered during the provisions of services/materials.



DETAIL P-22
SCALE 1:50
M-0007



DETAIL P-26
SCALE 1:50
M-0007

- NOTE:**
- ALL PIPE SUPPORT FRAME LOCATIONS AND DESIGNS ARE APPROXIMATE. CONTRACTOR TO PROVIDE SHOP DRAWINGS FOR FINAL APPROVAL.
 - EXHAUST PIPE EXPANSION JOISTS TO PROVIDE A MINIMUM OF 37mm (1.5") AXIAL AND 12mm (0.5") LATERAL DEFLECTION UNLESS OTHERWISE NOTED.
 - EXPANSION JOISTS TO BE STAINLESS STEEL
 - EXHAUST PIPE SUPPORTS TO BE ROLLER TYPE EXCEPT WHERE SHOWN AS RIGID.
 - RIGID SUPPORTS SHALL PREVENT MOTION OF PIPE AT THAT LOCATION. REFER ALSO TO DWG. 1-0630A-D-M0011
 - STAINLESS STEEL WELDING SHALL BE ACCORDING TO ANSII/AWS D10.4-86(52000). SUBMIT PROPOSED FILLER MATERIAL AND PROCEDURE PRIOR TO WELDING.
 - ALL AIR INTAKE PIPING SUPPORTS TO BE ROLLER TYPE.
 - FINAL LOCATION OF EXHAUST AND COMBUSTION AIR PIPING TO BE ADJUSTED TO SUIT ENGINE SELECTION.
 - ALL NEW PIPE SUPPORTS TO BE PAINTED TO MATCH EXISTING SUPPORTS. TOUCH UP EXISTING SUPPORTS WHERE MODIFIED.

DRN	CHK	DES	ENG	DR
UMA AECOM REVIEW				

APCGM
Certificate of Authorization
UMA Engineering Ltd. (MB)
No. 256 Date June 15-07

B.M. ELEV.	FIELD BOOK #:	UMA AECOM	
POSTED TO LBS		DESIGNED BY CAC	CHECKED BY
		DRAWN BY RJP	APPROVED BY
C	ISSUED FOR BID	07/06/15	RJP
B	ISSUED FOR 99% REVIEW	07/05/04	RJP
A	ISSUED FOR 75% REVIEW	07/03/15	RJP
NO.	REVISIONS	DATE	BY

ENGINEER'S SEAL

PROVINCE OF MANITOBA
C.A.D. COURCHAINE
REGISTERED PROFESSIONAL ENGINEER

THE CITY OF WINNIPEG
WATER AND WASTE DEPARTMENT

G. C. MACLEAN PUMPING STATION
Contract No.
Natural Gas Engine Drives Replacement
Mechanical - New Construction
PUMP/ENGINE LEVEL FLOOR PLAN

CITY DRAWING NUMBER: 1-0630A-D-M0007
SHEET: 001
REV. C
DATE: 07/03/09