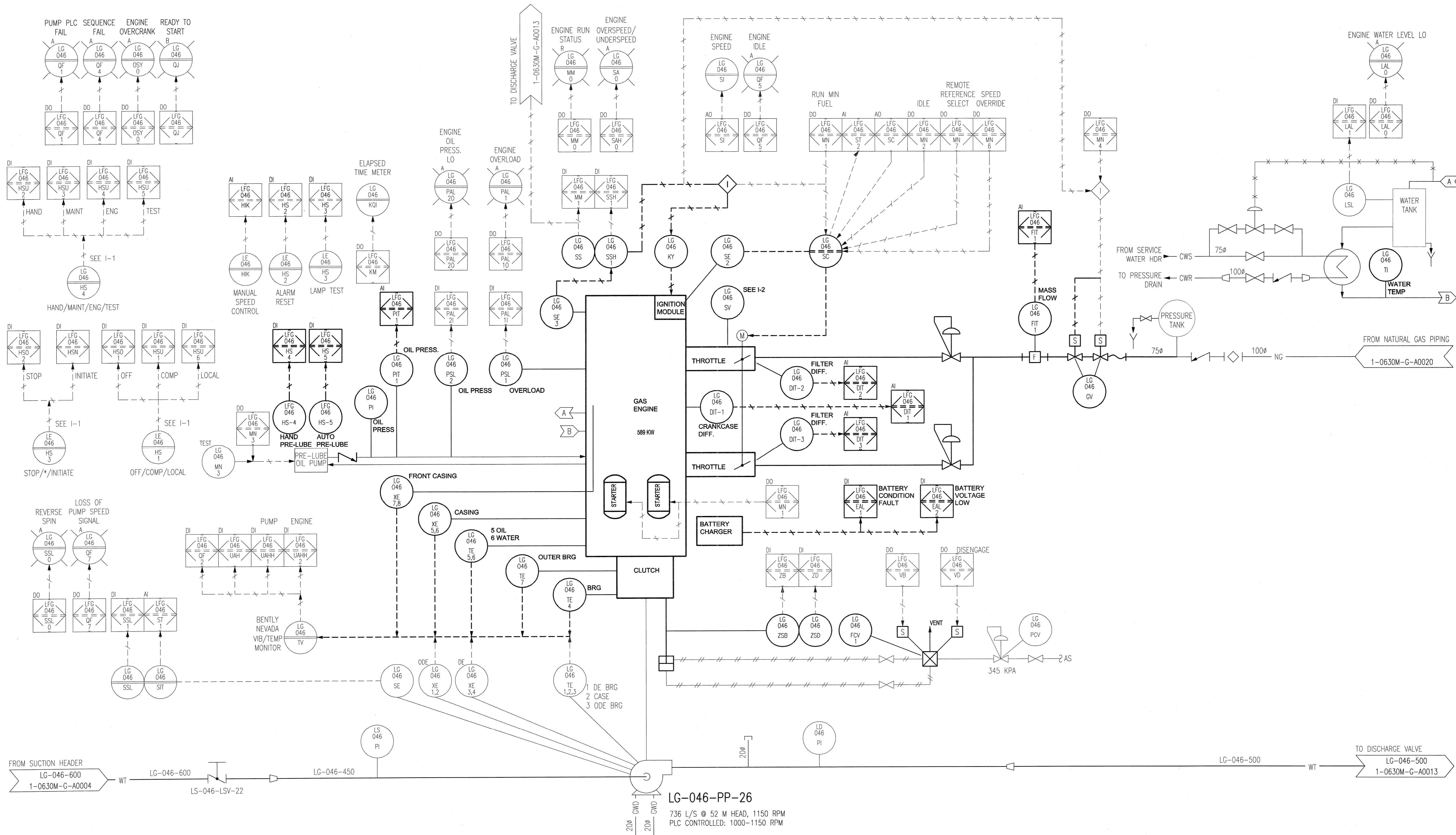


D SIZE 22" x 34" (599mm x 864mm) PLOT: 07/06/15 9:21:55 AM UMA FILE NAME: D265-199-00_01-P-0026_RX.dwg Saved By: rpsalid



FROM SUCTION HEADER LG-046-600 1-0630M-G-A0004 WT LG-046-600 LS-046-LSV-22 LG-046-450
 LG-046-PP-26 736 L/S @ 52 M HEAD, 1150 RPM
 PLC CONTROLLED: 1000-1150 RPM
 LG-046-500 WT TO DISCHARGE VALVE LG-046-500 1-0630M-G-A0013

APECM
 Certificate of Authorization
 UMA Engineering Ltd. (MB)
 No. 256 Date: June 15/07

DRN CHK DES ENG IDR
 UMA AECOM REVIEW

- NOTE:**
- ALL INSTRUMENTS SHOWN IN AN AUXILIARY LOCATION ARE IN THE LOCAL PUMP CONTROL PANEL, UNLESS OTHERWISE DESIGNATED.
 - ALL INSTRUMENTS FUNCTIONAL IDENTIFIERS ON THIS DRAWING BEGINNING WITH THE LETTER X ARE ASSOCIATED WITH VIBRATION.
 - THIS DRAWING SUPERSEDES DRAWINGS D-1914.
 - 1-1 LG-046-HS1 AND HS3 MAY BE DESIGNATED DIFFERENTLY ON EXISTING DOCUMENTATION.
 - 1-2 LG-046-SV IS CURRENTLY DESIGNATED AS LG-046-2V.

B.M. ELEV.	FIELD BOOK #:	SNC-LAVALIN Engineers & Constructors		SNC-LAVALIN 200-900 Main Avenue Winnipeg, Manitoba Canada R3J 9W7		ENGINEER'S SEAL	
POSTED TO LBIS		DESIGNED BY EXISTING	CHECKED BY -----				
		DRAWN BY EFB/SCK	APPROVED BY -				
		HOR. SCALE VERTICAL	NTS NTS				
C	ISSUED FOR BID	07/06/15	SCK	DATE	07/03/09	DATE	
B	ISSUED FOR 99% REVIEW	07/05/04	SCK				
A	ISSUED FOR 75% REVIEW	07/03/15	SCK				
NO.	REVISIONS	DATE	BY	FILENAME: D265-199-00_01-P-0026_RX.dwg			

CITY DRAWING NUMBER: 1-0630M-G-A0010 SHEET: 001 REV: C D

THE CITY OF WINNIPEG
 WATER AND WASTE DEPARTMENT

G.C. MACLEAN PUMPING STATION
 Contract No.
 Natural Gas Engine Drives Replacement
 Process And Instrumentation
 Diagrams - PUMP NO. 26