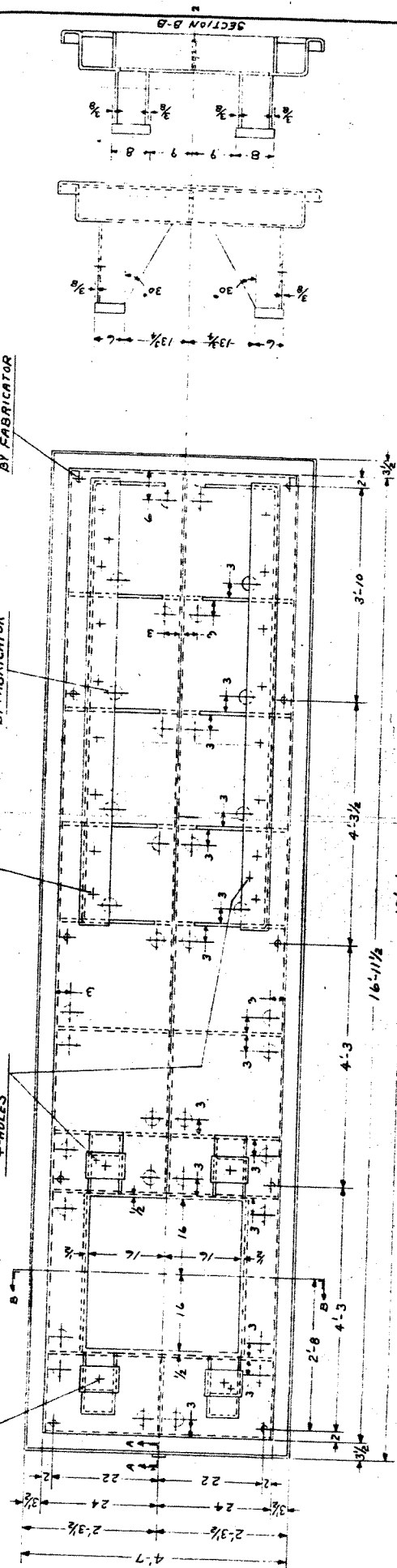


Appendix D

Existing Base Plate Drawing

C-60531
P-1G

MATERIAL	PROC. SPEC.	WT. LBS.	PT. No.
371.5.01	D.F.1.1-4	44.4	403



P25
MacLean Pump Stm

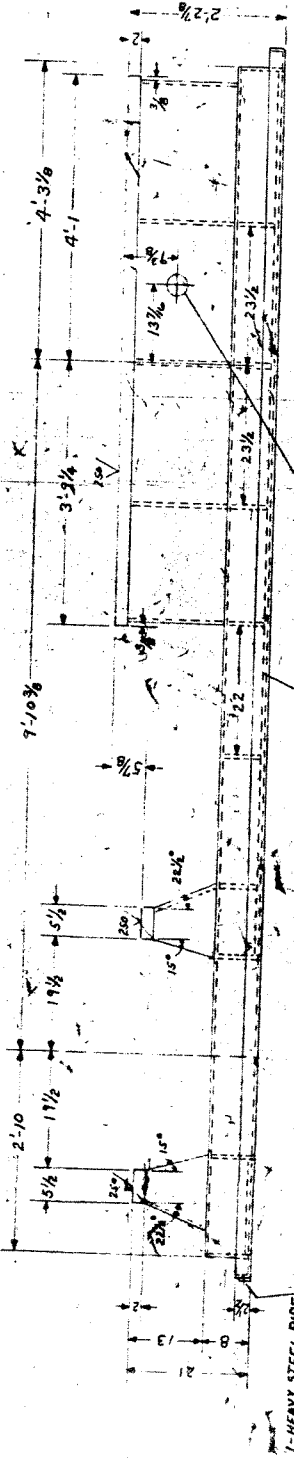
A CONTINUOUS FILLET WELD TO BE USED ON ALL EXPOSED JOINTS. ALL RIBBINE IN OPEN BOTTOM OF BED PLATE TO BE WELDED AS THUS $\frac{3}{8}$ -4-4.

NOTE
ALL DIMENSIONS TO SURFACE UNLESS INDICATED. SPALL THICKNESS, MAKE SUFFICIENT TO ALLOW FOR FINISHING. ALL MACHINING TO BE DONE ON THE UNMOUNTED BED PLATE TO BE STRONG ENOUGH TO WITHSTAND DELAYED PROCESSING OF 45 PER $\frac{1}{2}$ STEEL PLATE EXCEPT WHEN NOTED.

DE LAVAL TURBINE INC.
TRENTON, N. J.

BED PLATE

DATE	BY	SCALE	3/4, 1-0
12/18/42	EER	TYPE	P
12/19/42	EER	CLASS	II
APPR.		TRIT	ORR
ENGR.		TRIT	ORR
DRW.		TRIT	ORR
CHKD.		TRIT	ORR
DATE	BY	SCALE	7.01572-3
12/16/42	EER	TYPE	P-1G



APPROVED

JAMES F. MacLAREN LIMITED

DESIGNED BY	EER	D
REDESIGNED BY	EER	D
APPROVED BY	EER	D
DATE	BY	CHKD

SECTION A-A