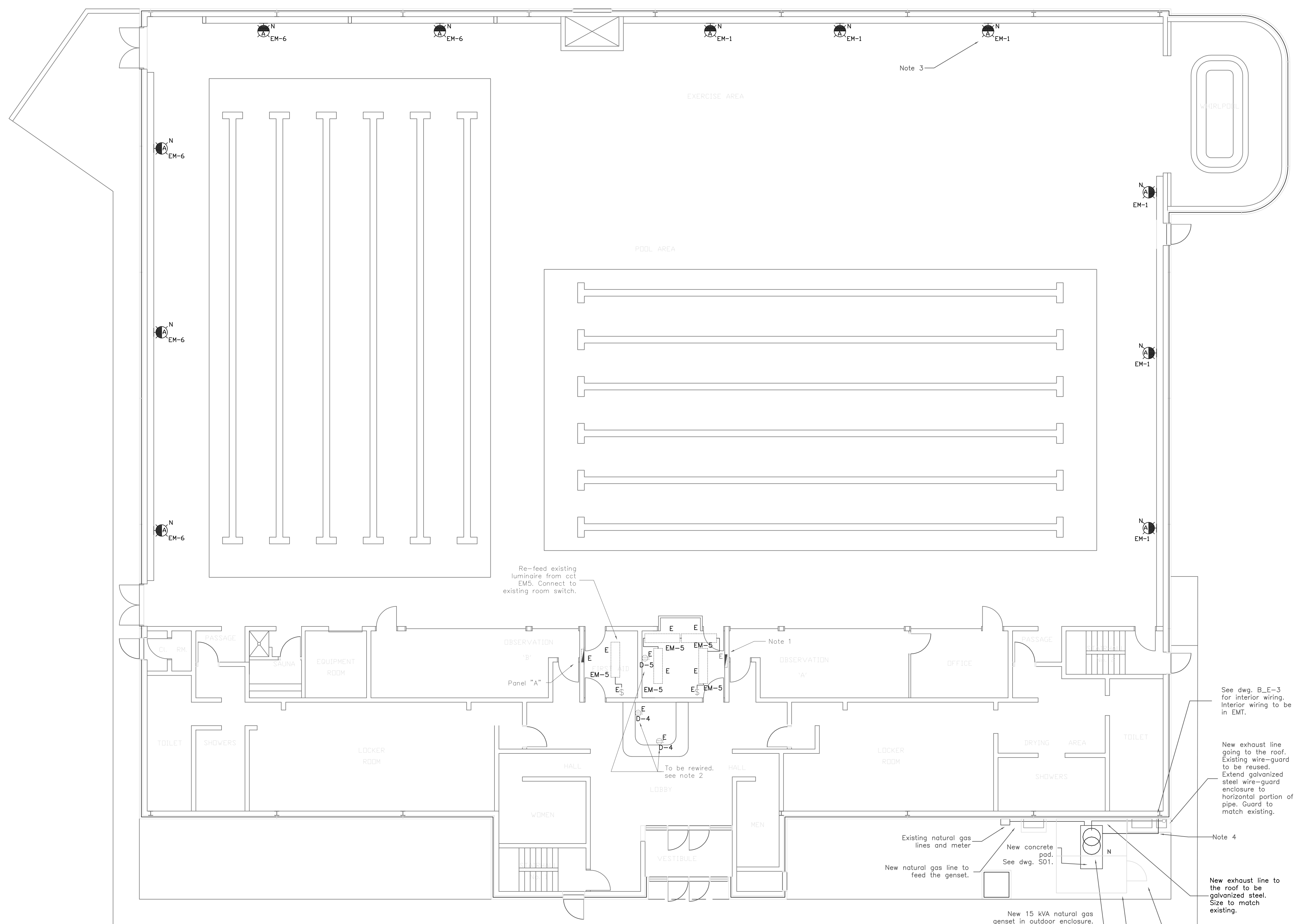


SYMBOL SCHEDULE	
	Panelboard Surface Mounted
	Panelboard Flush Mounted
	Generator
	Automatic Transfer Switch
	Luminaire Wall Mounted
	Receptacle 120V
	Receptacle 208V
	Surface Luminaire 1x4
	Circuit Breaker
	Switch
	Existing to Remain
	New
	Deleted
	Existing to be Relocated
	Relocated device/equipment



- Notes:
- Existing Panelboard "E" to be reused as a splice box to extend emergency cts to new Panelboard "EM" (see dwg. B_E-3 for location). Provide barrier inside splice box to separate emergency cts from normal cts (fed from Panelboard "D" - see dwg. B_E-3). Reuse existing conduits at the bottom of splice box to route normal and emergency cts down to basement. Extend wiring/conduit as required.
 - 3 ccts from existing Panelboard "E" to be transferred to reused Panelboard "D". (See dwg. B_E-3) The 3 ccts to be rewired as 2 ccts (D-4, D-5) as indicated.
 - Emergency lighting to be Cooperlight wall mount luminaire, PUP-S-42-120, or approved equal. See dwg. B_E-4/3.
 - Refer to underground trench detail B_E-4/5 for wiring to/from genset enclosure.

Re-feed existing luminaire from cct EMS. Connect to existing room switch.

To be rewired. see note 2

See dwg. B_E-3 for interior wiring. Interior wiring to be in EMT.

New exhaust line going to the roof. Existing wire-guard to be reused. Extend galvanized steel wire-guard enclosure to horizontal portion of pipe. Guard to match existing.

Note 4

New exhaust line to the roof to be galvanized steel. Size to match existing.

Existing natural gas lines and meter

New concrete pad. See dwg. S01.

New natural gas line to feed the genset.

New 15 kVA natural gas genset in outdoor enclosure. See dwg. B_E-5 for specification.

Access gate with non-climbable chain link fence. Gate as per City Standard Construction Specification CW 3550. Gate to be lockable. Provide 3 sets of keys.

New non-climbable chain link fence surrounding East, West, North and top of the generator set. The minimum clearance between the fence and the enclosure shall be 1.1m. Posts, five (5) top rails and fence shall be made of galvanized steel. Height of fence and posts shall be 2440mm. Other details as per City Standard Construction Specification CW3550.

Rev.	By:	DATE:
THE CITY OF WINNIPEG PUBLIC WORKS DEPARTMENT BUILDING SERVICES DIVISION 100 MAIN STREET, MAIN FLOOR WPG, MB, R3C 1A4 (204) 986-7266		
PROJECT:		
Emergency System Upgrade		
Bonivital Pool, 1215 Archibald St.		
SHEET TITLE:		
Main floor Plan, Electrical&Lighting		
ENG. STAMP:	PROJECT NO:	DATE:
 G.W. ALCOCK REGISTERED PROFESSIONAL ENGINEER	663-2006	24 October, 2006
	DRWEN BY:	CHECKED BY:
	VC	GWA
	APPROVED BY:	GWA
SCALE:	DATE:	REV:
1:100	24 October, 2006	0
DWG. NO:	REV:	
B_E-2		