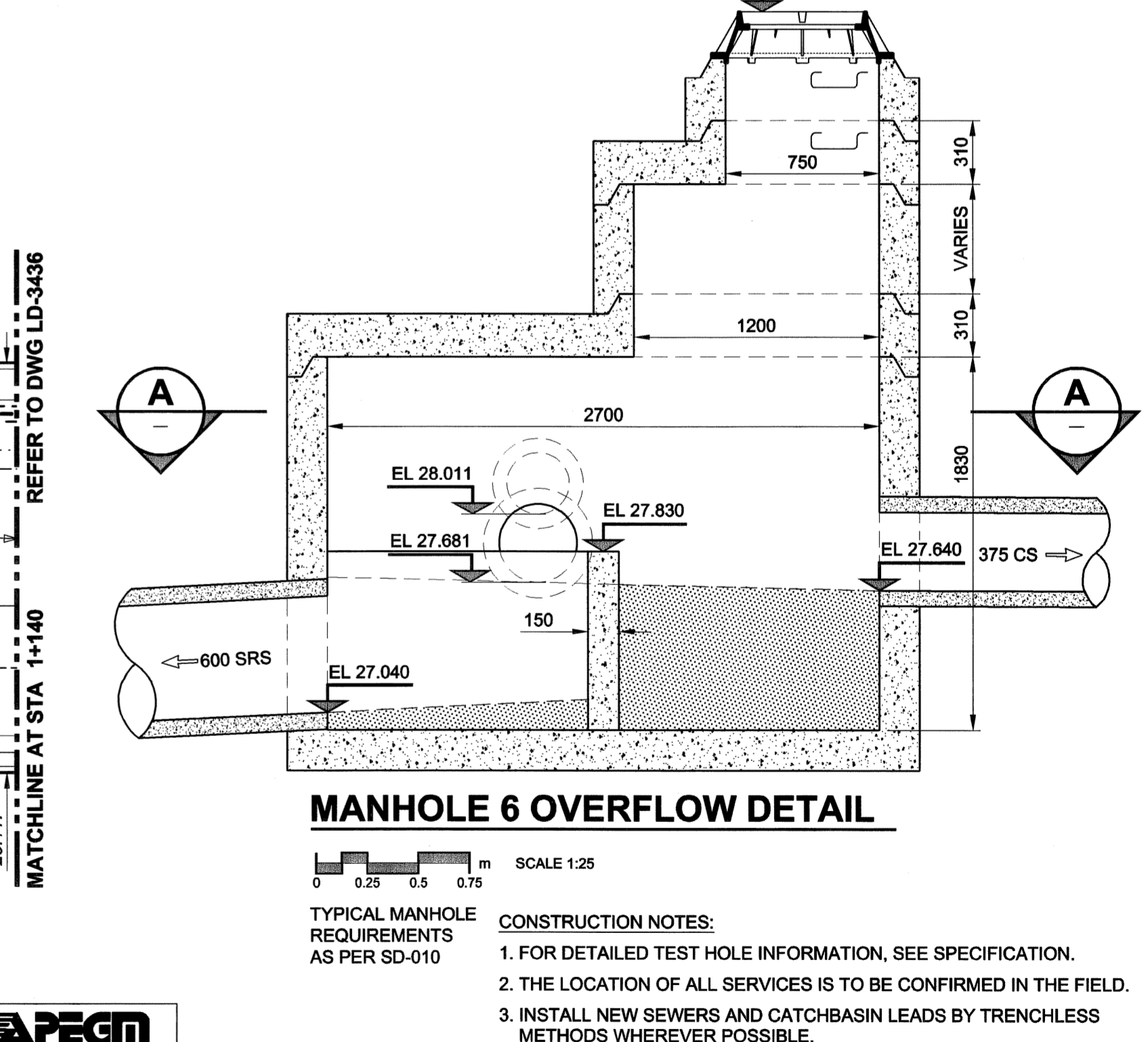
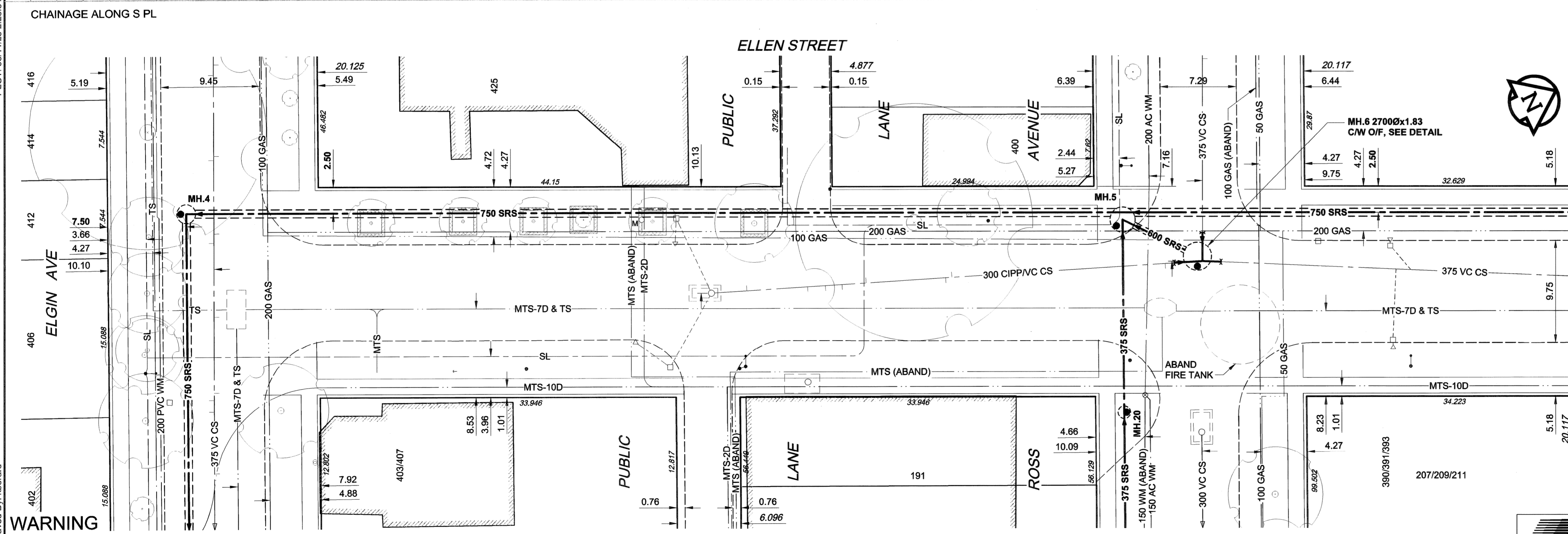
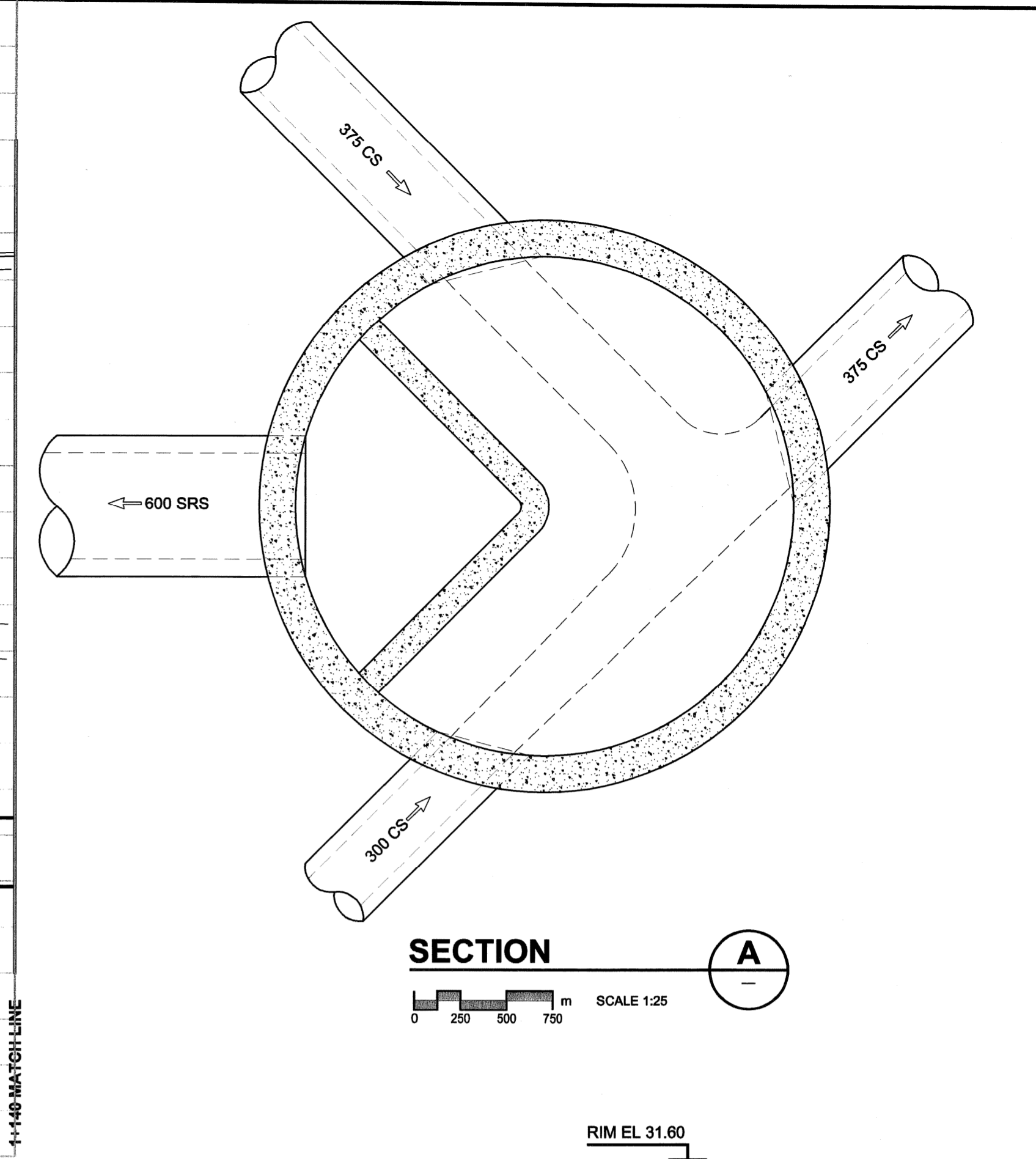
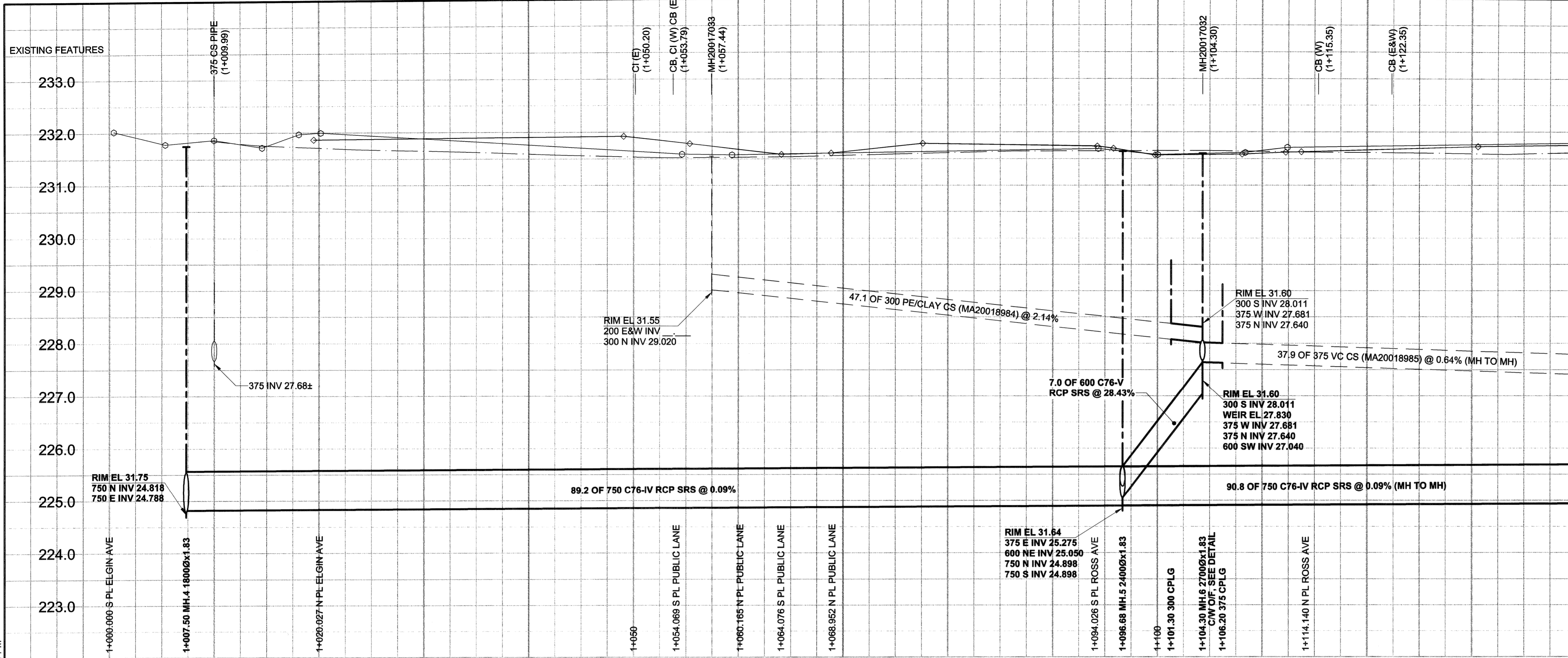


D SIZE 22" x 34" (559mm x 864mm)

PLOT: 06/11/23 2:23:34 PM

UMA FILE NAME: D265-177-04_01-C-1003_PX.dwg Saved By: lborard



WARNING
 IF POWER EQUIPMENT OR EXPLOSIVES ARE TO BE USED FOR EXCAVATION ON THIS PROJECT, THE CONTRACTOR MUST:
 1) NOTIFY THE GAS COMPANY OF THE PROPOSED LOCATION OF EXCAVATION.
 2) TAKE PRECAUTION TO AVOID DAMAGE TO GAS COMPANY INSTALLATIONS.
 SEE PROVINCIAL REGULATION 140/92 FOR DETAILS

FOR FURTHER INFO SEE DWG LD-3434

FOR FURTHER INFO SEE DWG LD-3441

EXISTING	LEGEND - PLAN	NEW	EXISTING	LEGEND - PROFILE	NEW	EXISTING	LEGEND - PROFILE	NEW
150 mm WM	WATERMAIN	150 mm WM	150 mm WM	WATERMAIN	150 mm WM	WATERMAIN	150 mm WM	WATERMAIN
300 mm LDS	LAND DRAINAGE SEWER	300 mm LDS	300 mm LDS	LAND DRAINAGE SEWER	300 mm LDS	LAND DRAINAGE SEWER	300 mm LDS	LAND DRAINAGE SEWER
250 mm WWS	WASTE WATER SEWER	250 mm WWS	250 mm WWS	WASTE WATER SEWER	250 mm WWS	WASTE WATER SEWER	250 mm WWS	WASTE WATER SEWER
○	MANHOLE	●	○	MANHOLE	●	MANHOLE	●	MANHOLE
□	CATCH BASIN	■	□	CATCH BASIN	■	CATCH BASIN	■	CATCH BASIN
△	CURB INLET	▲	△	CURB INLET	▲	CURB INLET	▲	CURB INLET
▭	CULVERT	▭	▭	CULVERT	▭	CULVERT	▭	CULVERT
—	PIPE ABANDONMENTS	—	—	PIPE ABANDONMENTS	—	PIPE ABANDONMENTS	—	PIPE ABANDONMENTS
+	SURVEY BAR	+	+	SURVEY BAR	+	SURVEY BAR	+	SURVEY BAR
+	HYDRANT	+	+	HYDRANT	+	HYDRANT	+	HYDRANT
+	VALVE	+	+	VALVE	+	VALVE	+	VALVE
+	ANODE	+	+	ANODE	+	ANODE	+	ANODE
+	MTS	+	+	MTS	+	MTS	+	MTS
+	GAS	+	+	GAS	+	GAS	+	GAS
+	TESTHOLE	+	+	TESTHOLE	+	TESTHOLE	+	TESTHOLE
+	LAMP STANDARD	+	+	LAMP STANDARD	+	LAMP STANDARD	+	LAMP STANDARD
+	TREE	+	+	TREE	+	TREE	+	TREE
+	REDUCER	+	+	REDUCER	+	REDUCER	+	REDUCER
+	COUPLING	+	+	COUPLING	+	COUPLING	+	COUPLING
+	HYDRO	+	+	HYDRO	+	HYDRO	+	HYDRO
+	MTS	+	+	MTS	+	MTS	+	MTS
+	GAS	+	+	GAS	+	GAS	+	GAS
+	TESTHOLE	+	+	TESTHOLE	+	TESTHOLE	+	TESTHOLE
+	LAMP STANDARD	+	+	LAMP STANDARD	+	LAMP STANDARD	+	LAMP STANDARD
+	TREE	+	+	TREE	+	TREE	+	TREE

LOCATION APPROVED
 UNDERGROUND STRUCTURES
 SUPR. U/G STRUCTURES DATE COMMITTEE
 NOTE: LOCATION OF UNDERGROUND STRUCTURES AS SHOWN ARE BASED ON THE BEST INFORMATION AVAILABLE. BUT NO GUARANTEE IS GIVEN THAT ALL EXISTING UTILITIES ARE SHOWN OR THAT THE GIVEN LOCATIONS ARE EXACT. CONFIRMATION OF EXISTENCE AND EXACT LOCATION OF ALL SERVICES MUST BE OBTAINED FROM THE INDIVIDUAL UTILITIES BEFORE PROCEEDING WITH CONSTRUCTION.

NO.	ISSUED FOR CONSTRUCTION	REVISIONS	DATE	BY
0	ISSUED FOR CONSTRUCTION		06/11/23	KMB
0	REVISIONS		YYMMDD	

METRIC
 WHOLE NUMBERS INDICATE MILLIMETRES
 DECIMALIZED NUMBERS INDICATE METRES

UMA | AECOM

© 2005 UMA ENGINEERING LTD. ALL RIGHTS RESERVED.

DESIGNED BY: GEB / DME
 CHECKED BY: [Signature]
 DRAWN BY: KMB
 APPROVED BY: [Signature]
 HOR. SCALE: 1:250
 VERT. SCALE: 1:50
 DATE: 06/11/23

APECM
 Certificate of Authorization
 UMA Engineering Ltd.
 No. 256 Expiry: April 30, 2007

PROFESSIONAL'S SEAL
 PROVINCE OF MANITOBA
 REGISTERED PROFESSIONAL ENGINEER
 A. NAGY
 CONSULTANT DRAWING NO. 03
 D265-177-04

THE CITY OF WINNIPEG
 WATER AND WASTE DEPARTMENT

ALEXANDER/BANNATYNE
 COMBINED SEWER RELIEF
 CONTRACT 4

ELLEN STREET
 TO 50m SOUTH OF PACIFIC AVENUE

SHEET 3 OF 15
 CITY DRAWING NUMBER
LD-3435
 REV 0

BID OPPORTUNITY NO. 690-2006