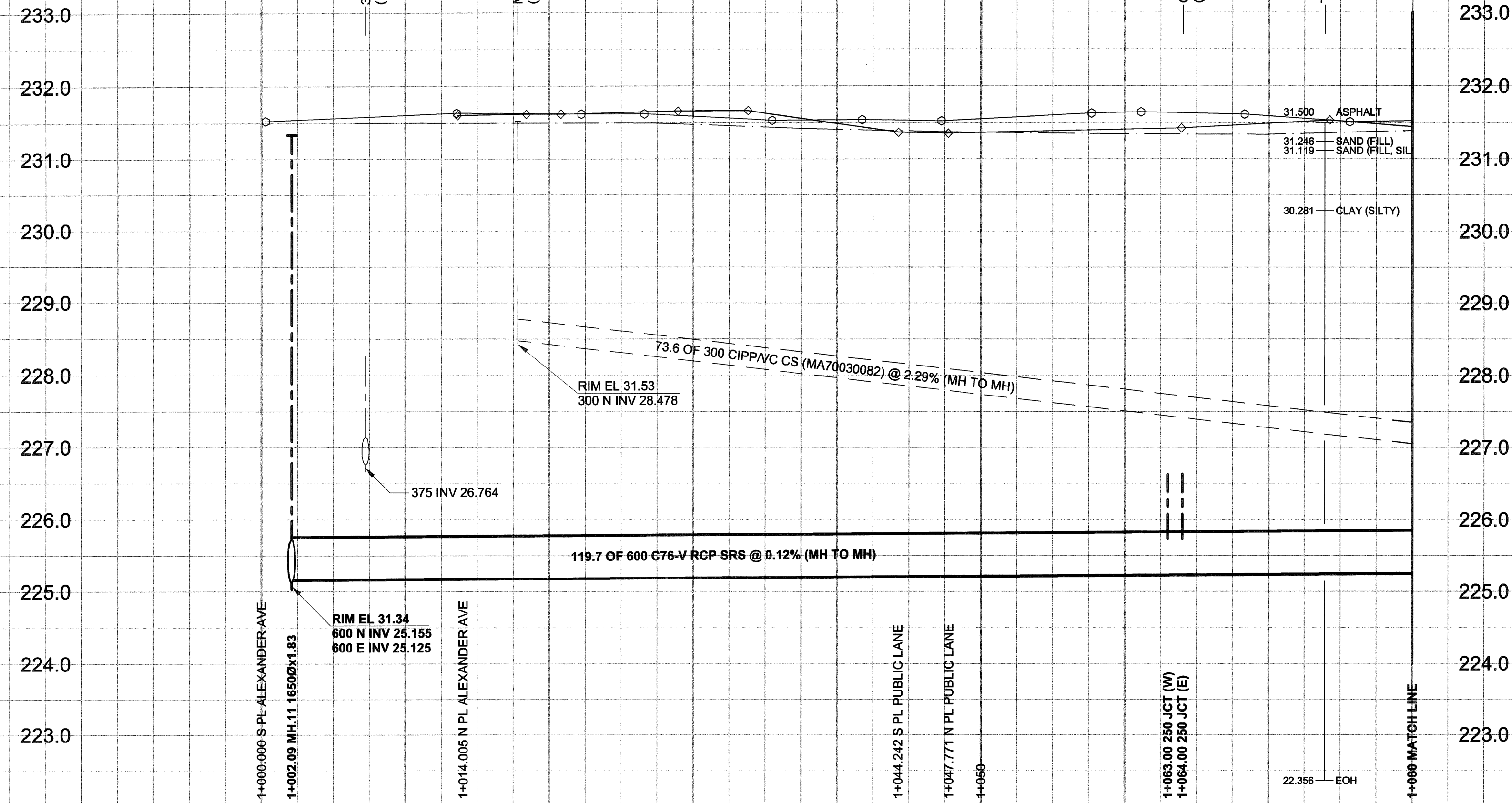
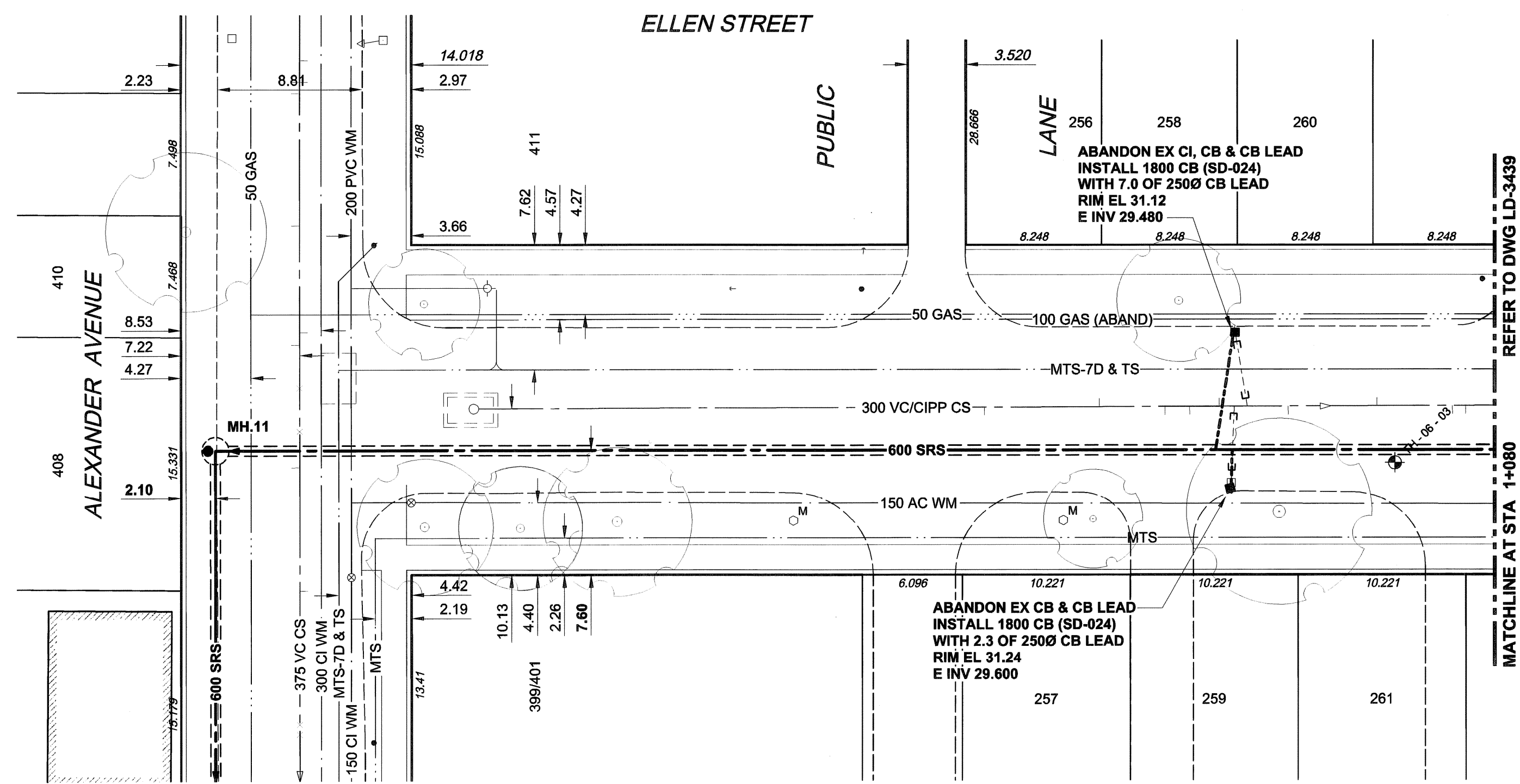


EXISTING FEATURES



CHAINAGE ALONG E PL



WARNING

IF POWER EQUIPMENT OR EXPLOSIVES ARE TO BE USED FOR EXCAVATION ON THIS PROJECT, THE CONTRACTOR MUST:

- 1) NOTIFY THE GAS COMPANY OF THE PROPOSED LOCATION OF EXCAVATION.
- 2) TAKE PRECAUTION TO AVOID DAMAGE TO GAS COMPANY INSTALLATIONS.

SEE PROVINCIAL REGULATION 140/92 FOR DETAILS

FOR FURTHER INFO SEE DWG LD-3437

EXISTING	LEGEND - PLAN	NEW	EXISTING	LEGEND - PLAN	NEW	EXISTING	LEGEND - PROFILE	NEW
150 mm WM	WATERMAIN	150 mm WM	CURB STOP	150 mm WM	WATERMAIN	150 mm WM	WATERMAIN	150 mm WM
Hydrant	HYDRANT	Valve	REDUCER	Hydrant	HYDRANT	Land Drainage Sewer	HYDRANT	Land Drainage Sewer
300 mm LDS	LAND DRAINAGE SEWER	300 mm LDS	COUPLING	300 mm LDS	VALVE	Waste Water Sewer	VALVE	Waste Water Sewer
250 mm WWS	WASTE WATER SEWER	250 mm WWS	ANODE	250 mm WWS	LAND DRAINAGE SEWER	Pavement Crown	LAND DRAINAGE SEWER	Pavement Crown
Manhole	MANHOLE	Manhole	HYDRO	Manhole	WASTE WATER SEWER	N/W PROPERTY LINE	WASTE WATER SEWER	WASTE WATER SEWER
Catch Basin	CATCH BASIN	Catch Basin	MTS	Catch Basin	PAVEMENT CROWN	S/E PROPERTY LINE	PAVEMENT CROWN	PAVEMENT CROWN
Curb Inlet	CURB INLET	Curb Inlet	GAS	Curb Inlet	N/W PROPERTY LINE	N/W GUTTER	N/W PROPERTY LINE	N/W GUTTER
Culvert	CULVERT	Culvert	TESTHOLE	Culvert	S/E PROPERTY LINE	S/E GUTTER	S/E PROPERTY LINE	S/E GUTTER
Pipe Abandonments	PIPE ABANDONMENTS	Pipe Abandonments	LAMP STANDARD	Pipe Abandonments	N/W GUTTER		N/W GUTTER	
Survey Bar	SURVEY BAR	Survey Bar	TREE	Survey Bar	S/E GUTTER		S/E GUTTER	

LOCATION APPROVED UNDERGROUND STRUCTURES

NOTE: LOCATION OF UNDERGROUND STRUCTURES AS SHOWN ARE BASED ON THE BEST INFORMATION AVAILABLE. BUT NO GUARANTEE IS GIVEN THAT ALL EXISTING UTILITIES ARE SHOWN OR THAT THE GIVEN LOCATIONS ARE EXACT. CONFIRMATION OF EXISTENCE AND EXACT LOCATION OF ALL SERVICES MUST BE OBTAINED FROM THE INDIVIDUAL UTILITIES BEFORE PROCEEDING WITH CONSTRUCTION.

BM 35-042	N.W. Cor. Logan Ave. & Ellen St. Tbt. In 7.6m	0	ISSUED FOR CONSTRUCTION	06/11/28	KMB
ELEV 231.170m	Conc. pile beneath Valve Box 7.6m S. of N.L. Logan Ave. & 5.4m E. of W.L. Ellen St.	NO.	REVISIONS	YYMMDD	BY

METRIC
WHOLE NUMBERS INDICATE MILLIMETRES
DECIMALIZED NUMBERS INDICATE METRES

UMA | AECOM

DESIGNED BY	GEB / DME	CHECKED BY	[Signature]
DRAWN BY	KMB	APPROVED BY	[Signature]
HOR. SCALE	1:250	RELEASED FOR CONSTRUCTION	[Signature]
VERT. SCALE	1:50	DATE	06/11/29

APEGM
Certificate of Authorization
UMA Engineering Ltd.
No. 256 Expiry: April 30, 2007

PROFESSIONAL'S SEAL
PROVINCE OF MANITOBA
A. NAGY
REGISTERED PROFESSIONAL ENGINEER
CONSULTANT DRAWING NO. 06
D265-177-04

CONSTRUCTION NOTES:

1. FOR DETAILED TEST HOLE INFORMATION, SEE SPECIFICATION.
2. THE LOCATION OF ALL SERVICES IS TO BE CONFIRMED IN THE FIELD.
3. INSTALL NEW SEWERS AND CATCHBASIN LEADS BY TRENCHLESS METHODS WHEREVER POSSIBLE.
4. RENEW/REHABILITATE CATCHBASINS & RENEW CATCHBASIN LEADS WHERE NOTED.

BID OPPORTUNITY NO. 690-2006

THE CITY OF WINNIPEG
WATER AND WASTE DEPARTMENT

ALEXANDER/BANNATYNE
COMBINED SEWER RELIEF
CONTRACT 4

ELLEN STREET
ALEXANDER AVENUE
TO 45m SOUTH OF LOGAN AVENUE

SHEET 6 OF 15
CITY DRAWING NUMBER
LD-3438 REV 0