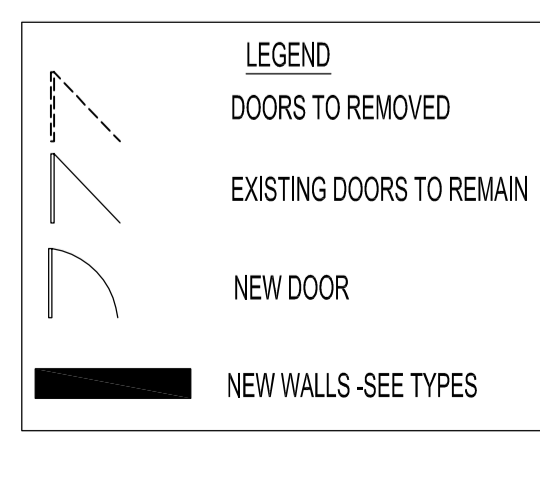
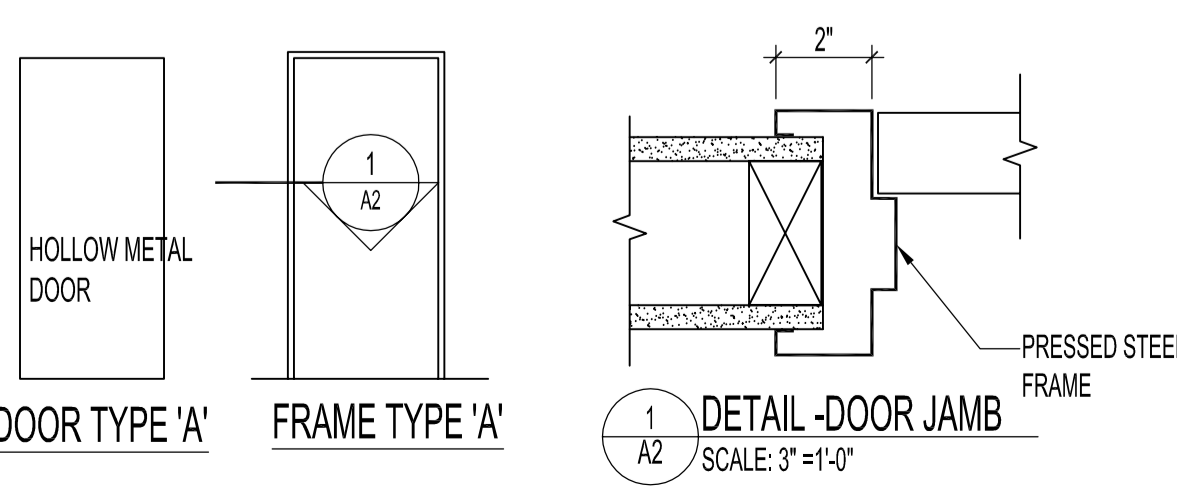


PARTIAL SECOND FLOOR PLAN -RENOVATION
SCALE: 1/8"=1'-0"

DOOR SCHEDULE												
DOOR NO.	DOOR TYPE	WIDTH	HEIGHT	THICKNESS	MATERIAL	FINISH	FRAME TYPE	FRAME MATERIAL	FRAME FINISH	RATING	HARDWARE GROUP	NOTES
D100	EXISTING										1	
D101	A	3'-0"	6'-8"	1 3/4"	H.M.	PT.	A	P.S.	PT.		2	
D103	A	3'-0"	6'-8"	1 3/4"	H.M.	PT.	A	P.S.	PT.		2	
D104	A	3'-0"	6'-8"	1 3/4"	H.M.	PT.	A	P.S.	PT.		2	
D200	A	3'-0"	6'-8"	1 3/4"	H.M.	PT.	A	P.S.	PT.	3/4 HOUR	3	

ROOM FINISH SCHEDULE										
ROOM NO.	ROOM NAME	FLOOR	BASEBOARD	NORTH WALL	SOUTH WALL	EAST WALL	WEST WALL	CEILING	CEILING HEIGHT	NOTES
MAIN FLOOR										
100	LOBBY	CP.	R.BB.	PT.	PT.	PT.	PT.	ACT. #1	7'-9"	
101	MONITOR	CP.	R.BB.	PT.	PT.	PT.	PT.	ACT. #1	7'-9"	
102	CORRIDOR	CP.	R.BB.	PT.	PT.	PT.	PT.	ACT. #1	7'-9"	
103	SUITE	CP.	R.BB.	PT.	PT.	PT.	PT.	ACT. #1	7'-9"	
104	OFFICE	CP.	R.BB.	PT.	PT.	PT.	PT.	ACT. #1	7'-9"	
105	DRUG PROCESSING ROOM #2	PT.	R.BB.	PT.	PT.	PT.	PT.	G.B. & PT.	8'-8"	FLOOR PAINT TO MATCH PROCESSING RM. #1
MAIN FLOOR										
200	STAIR EXIT			PT.	PT.		PT.	G.B. & PT.	8'-0"	PAINT EXTERIOR OF NEW EXIT
201	STORAGE	PT.								FLOOR PAINT TO MATCH EXISTING 2ND FLOOR

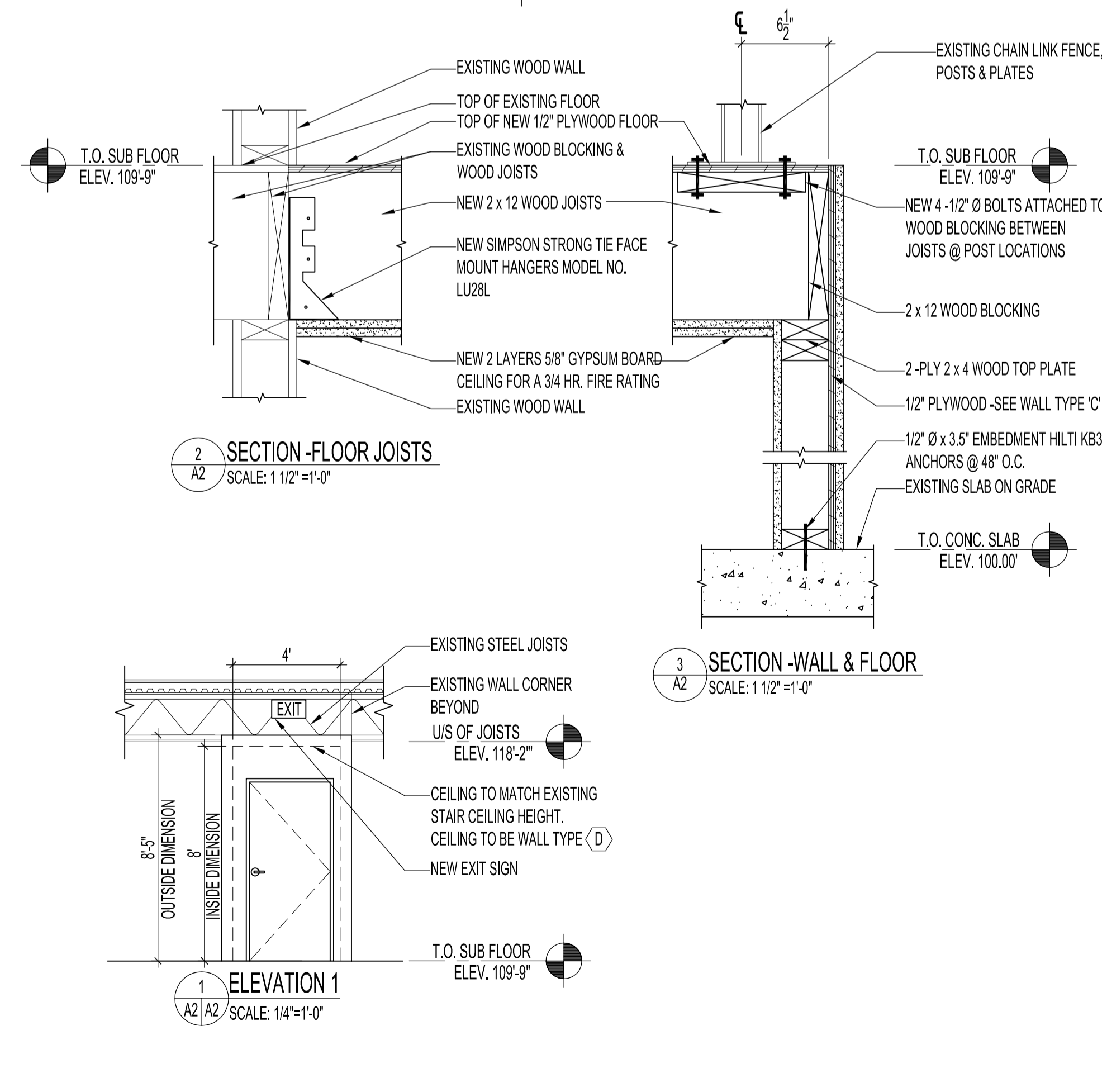
ABBREVIATIONS (DOOR & ROOM SCHEDULES)							
AC.T.	ACOUSTIC TILE	CP.	CARPET	G.B.	GYPSUM BOARD	H.M.	HOLLOW METAL
P.S.	PRESSED STEEL	PT.	PAINT	R.BB.	RUBBER BASEBOARD		



HARDWARE GROUPS	
#1	2A-3A-3B
#2	1A-2A-3A-3B
#3	1A-2B-3A-3B-4A

- HARDWARE CODES:**
- 1A HINGES TA714 4 1/2" x 4" 26D
 - 2A ENTRANCE LOCK S51PD F81, LEVER SET -SCHLAGE S SERIES STANDARD DUTY COMMERCIAL LOCKSET JUPITER 626
 - 2B CLASSROOM LOCK S70PD F84, LEVER SET -SCHLAGE S SERIES STANDARD DUTY COMMERCIAL LOCKSET JUPITER 626
 - 3A KNC W-21 SELF-ADHESIVE BLACK SANTOPRENE
 - 3B KNC CT-50 AUTOMATIC DOOR BOTTOM EXTRUDED ALUMINIUM WITH CLOSED CELL SPONGE NEOPRENE
 - 4A CLOSER -DOREX 1900 SERIES

- WALL TYPES**
- TYPE (A) 2 x 4 WOOD STUDS @ 24" O.C. W/ 2 LAYERS OF 1/2" GYPSUM BOARD B/S C/W SOUND ATTENUATION BATT. PARTITIONS ARE TO THE U/S OF OF ACOUSTIC CEILING. PROVIDE CAULKING & FOAM @ TOP & BTM. PLATES OF WALL FOR SOUND REDUCTION
 - TYPE (B) 1/2" GYPSUM BOARD EXISTING GYPSUM BOARD & STUD WALL
 - TYPE (C) 2 x 4 WOOD STUDS @ 16" O.C. W/ 1/2" PLYWOOD ON EXTERIOR OF WALLS & 5/8" TYPE 'X' GYPSUM BOARD B/S. CAULK ALL PENETRATIONS JOINTS & EDGES FOR A 3/4 HOUR FIRE RATING.
 - TYPE (D) 2 x 4 WOOD STUDS @ 16" O.C. W/ 5/8" TYPE 'X' GYPSUM BOARD B/S. STAIR EXIT 200 ONLY -CAULK ALL PENETRATIONS & EDGES FOR A 3/4 HOUR FIRE RATING.



ORIGINAL STAMPED BY: R.K. FOK LI Arch.
DATE: 2006.11.10

NO.	REVISION/DESCRIPTION	BY	DATE
SEALS			

DRAWN BY: MMK CHECKED BY: USER APPROVAL
DATE: 2006.11.10

CITY OF WINNIPEG
PLANNING, PROPERTY & DEVELOPMENT DEPARTMENT
CIVIC ACCOMMODATIONS DIVISION
300 - 65 GARRY ST. R3C 4K4

PROJECT
STORAGE FACILITY
DRUG PROCESSING UNIT & POLYGRAPH UNIT
860 EMPRESS STREET

SHEET TITLE
PARTIAL SECOND FLOOR PLAN
RENOVATION -DOOR & ROOM
FINISH SCHEDULES & SECTIONS