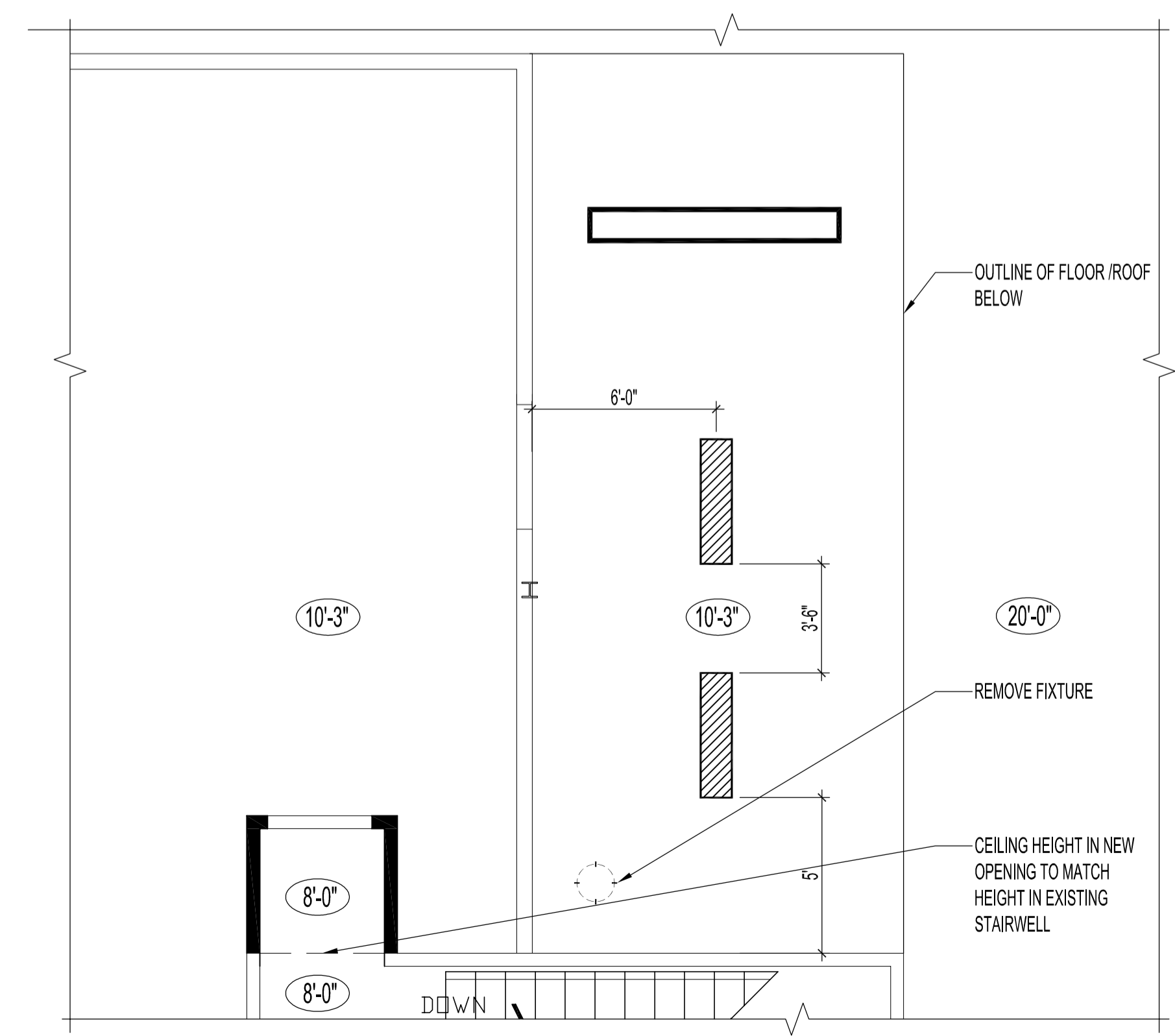
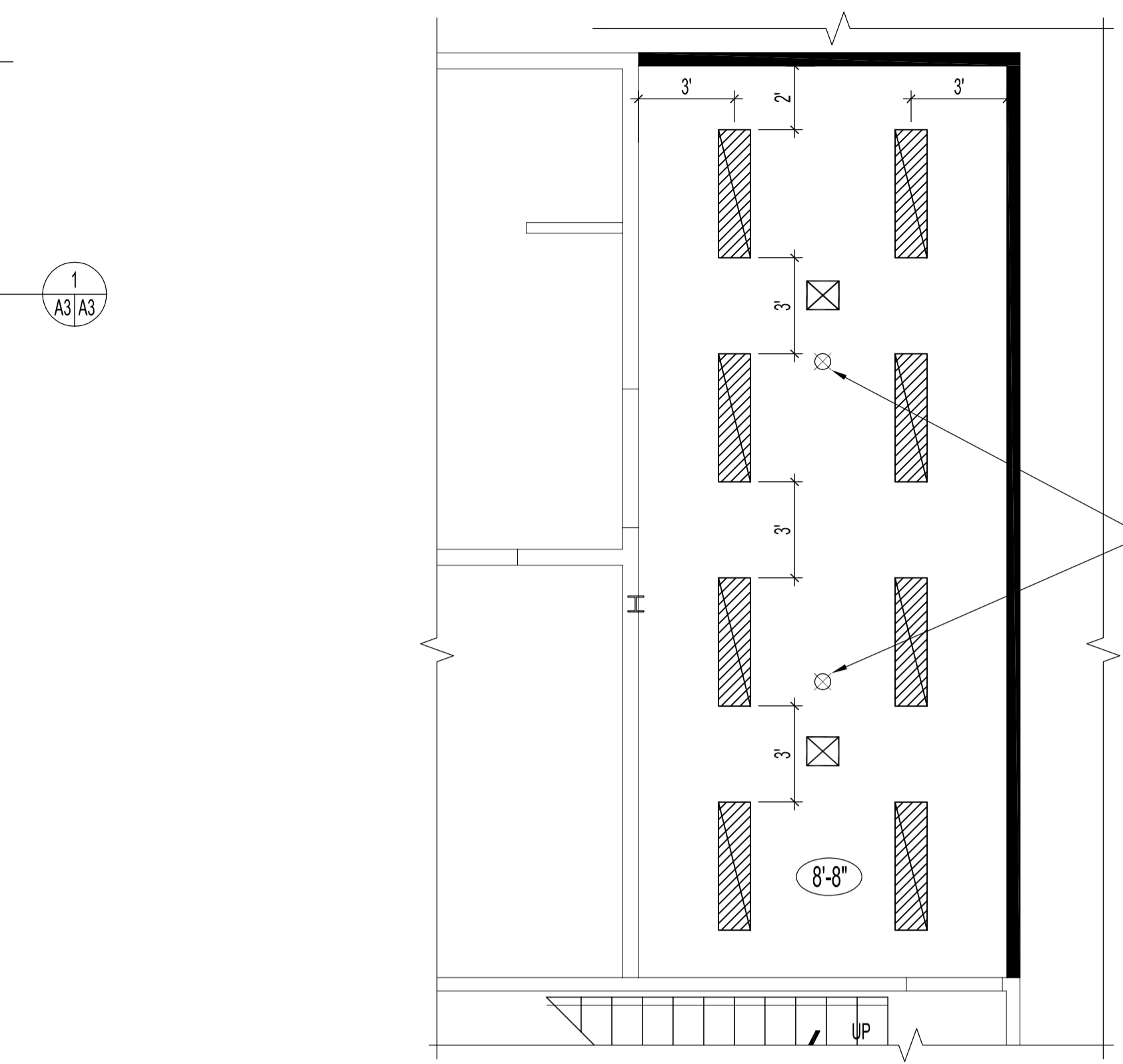


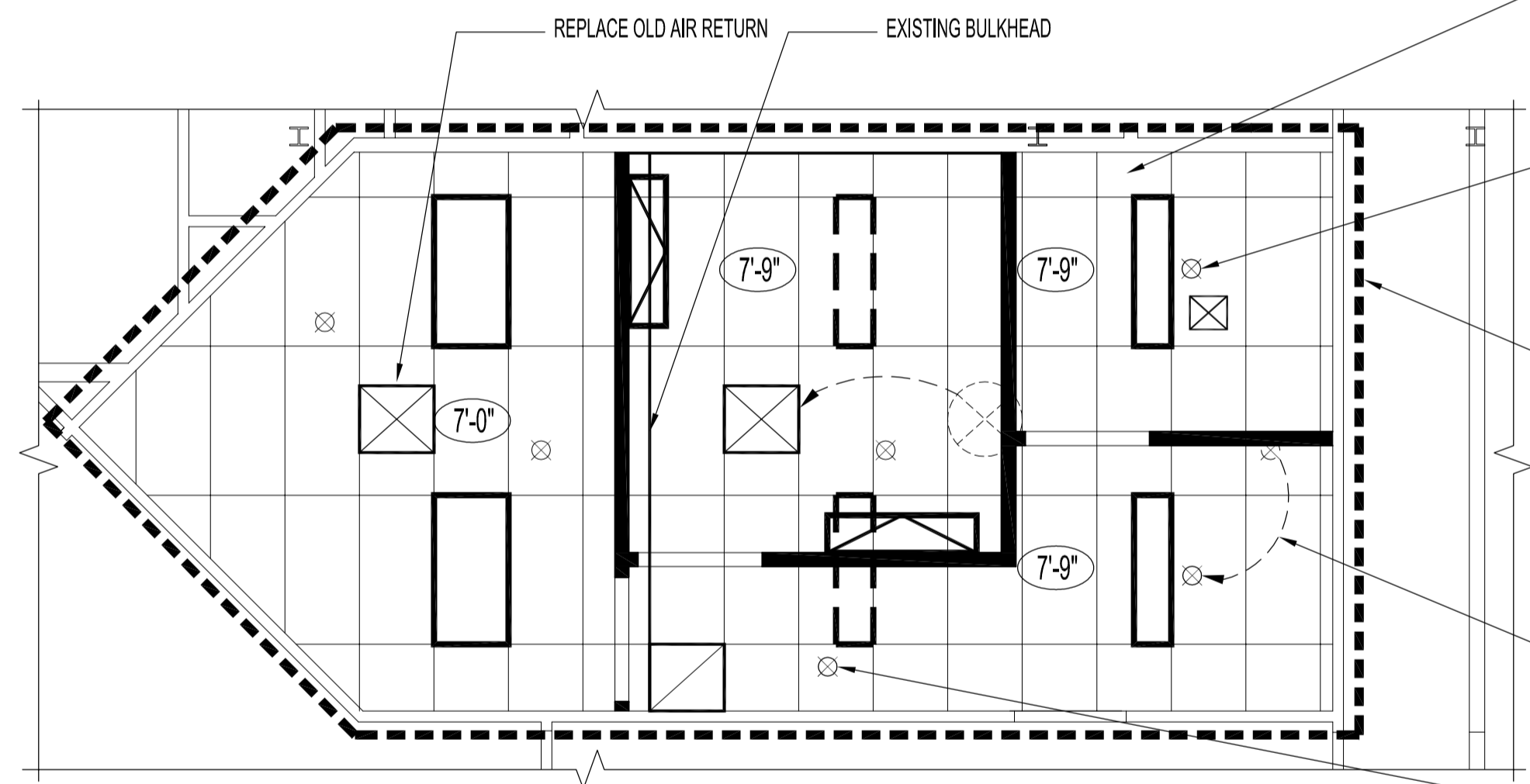
PARTIAL MAIN FLOOR PLAN
SCALE: 1/8"=1'-0"



PARTIAL SECOND FLOOR PLAN -NEW REFLECTED CEILING
SCALE: 1/4"=1'-0"



PARTIAL MAIN FLOOR PLAN -NEW REFLECTED CEILING
SCALE: 1/4"=1'-0"



PARTIAL MAIN FLOOR PLAN -EXISTING & NEW REFLECTED CEILING
SCALE: 1/4"=1'-0"

LIGHTING/HVAC LEGEND

- 20'-0" CEILING HEIGHT
- EXISTING 24 x 48 FLUORESCENTS
- EXISTING 12 x 48 & 12 x 96 FLUORESCENTS
- 12 x 48 FLUORESCENTS TO BE RELOCATED
- NEW 12 x 48 SURFACE MOUNTED FLUORESCENTS
- NEW 12 x 48 SUSPENDED FLUORESCENTS
- NEW CORNER MOUNTED FLUORESCENTS
- EXISTING SUSPENDED METAL HALIDE LUMINAIRE TO BE RELOCATED.
- NEW AIR RETURNS
- EXISTING AIR RETURNS
- AIR RETURNS TO BE REPLACED /RELOCATED
- EXISTING AIR INTAKES
- EXISTING OR NEW /RELOCATED SPRINKLER HEADS
- SPRINKLER HEADS TO BE REMOVED /RELOCATED

NEW SPRINKLER HEAD

REPLACE ALL ACOUSTIC PANELS IN ALL ROOMS -SEE ROOM FINISH SCHEDULE FOR ROOMS & TYPE

NEW SPRINKLER HEAD

PROVIDE "OWENS CORNING SELECT SOUND ACOUSTIC BLANKET" ABOVE SUSPENDED CEILING IN ALL ROOMS & AT BULKHEAD

RELOCATE EXISTING SPRINKLER HEAD

NEW SPRINKLER HEAD

NOTES :

ORIGINAL STAMPED BY: R.K. FOK LI Arch.
DATE: 2006.11.10

NO.	REVISION/DESCRIPTION	BY	DATE

DRAWN BY	CHECKED BY	APPROVED
MMK		

CITY OF WINNIPEG
PLANNING, PROPERTY & DEVELOPMENT DEPARTMENT
CIVIC ACCOMMODATIONS DIVISION
300 - 65 GARRY ST. R3C 4K4

PROJECT
STORAGE FACILITY
DRUG PROCESSING UNIT & POLYGRAPH UNIT
860 EMPRESS STREET

SHEET TITLE
PARTIAL MAIN & SECOND FLOOR PLANS
REFLECTED CEILING PLANS

SCALE	PROJECT NO.	SHEET NO.
AS SHOWN	2006-054	A3