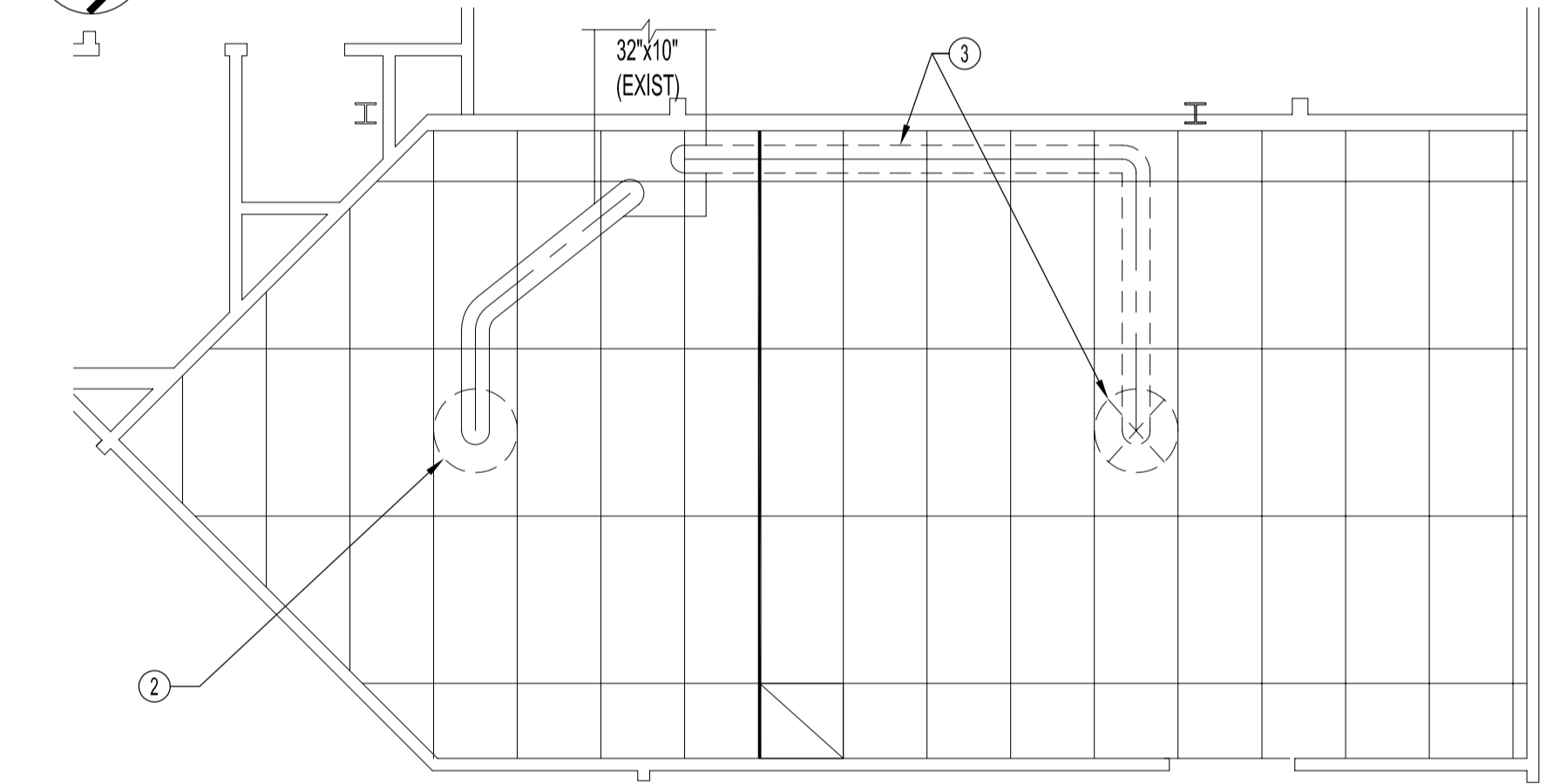
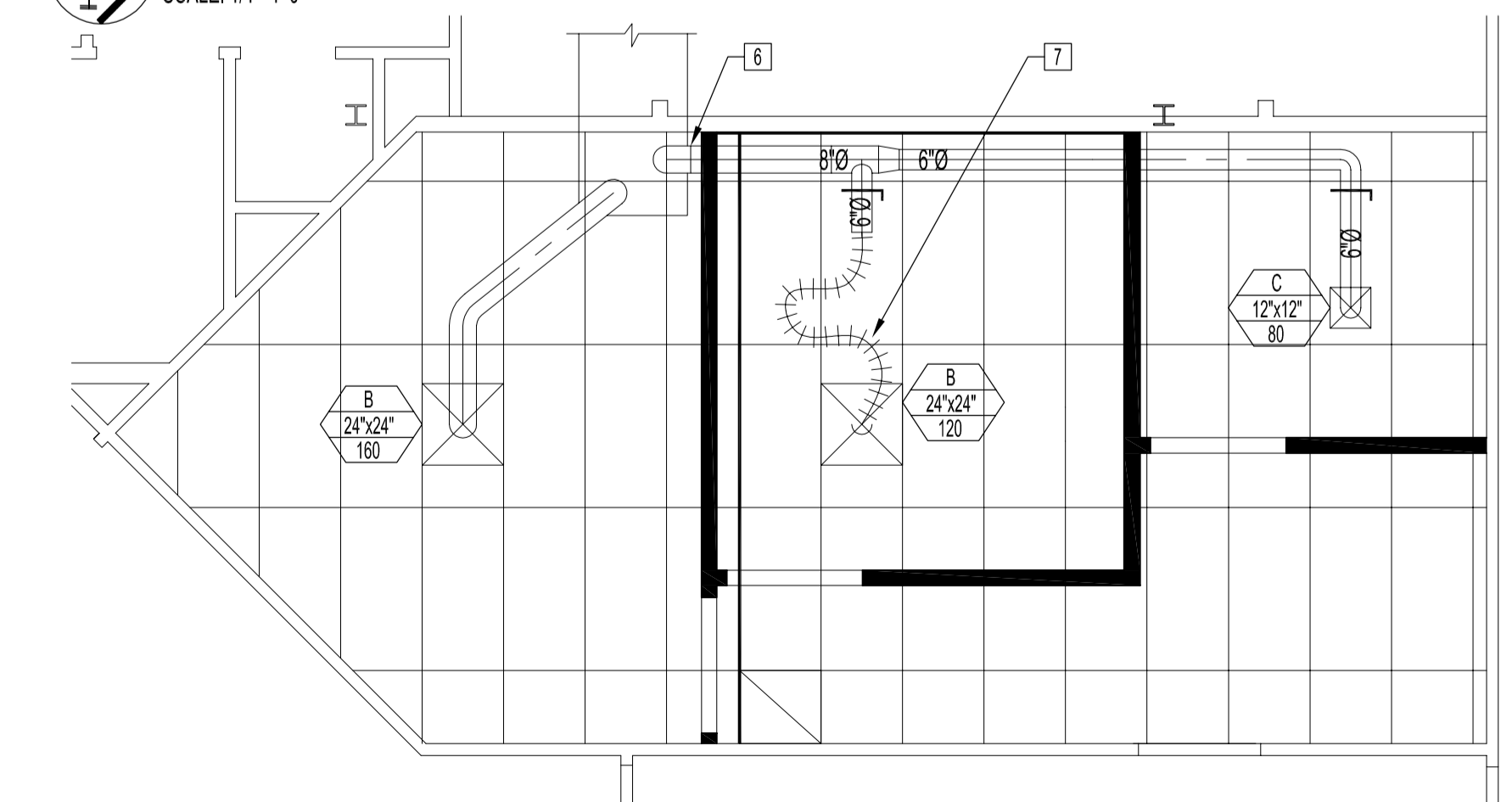


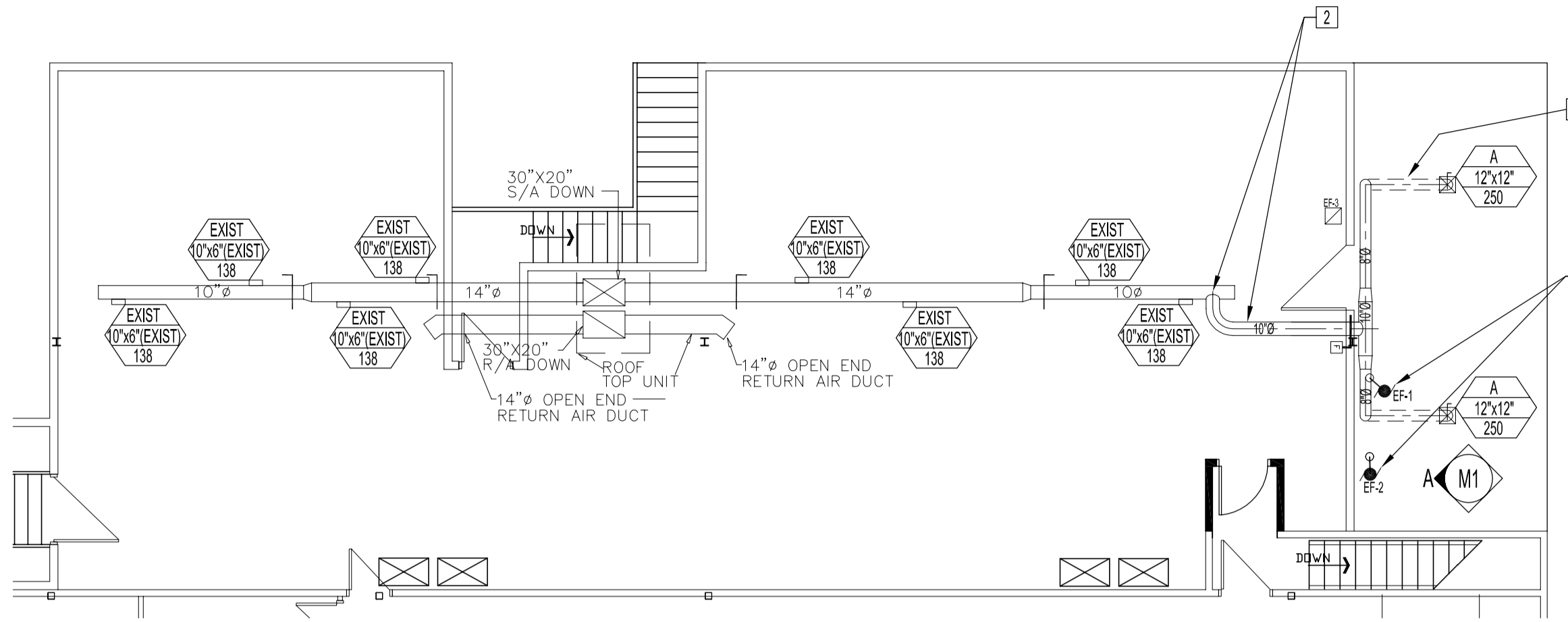
PARTIAL MAIN FLOOR PLAN - SPRINKLER ADDITION
 SCALE: 1/8"=1'-0"



PARTIAL MAIN FLOOR PLAN - REFLECTED CEILING - POLYGRAPH UNIT DEMOLITION
 SCALE: 1/4"=1'-0"



PARTIAL MAIN FLOOR PLAN - REFLECTED CEILING - POLYGRAPH UNIT RENOVATION
 SCALE: 1/4"=1'-0"



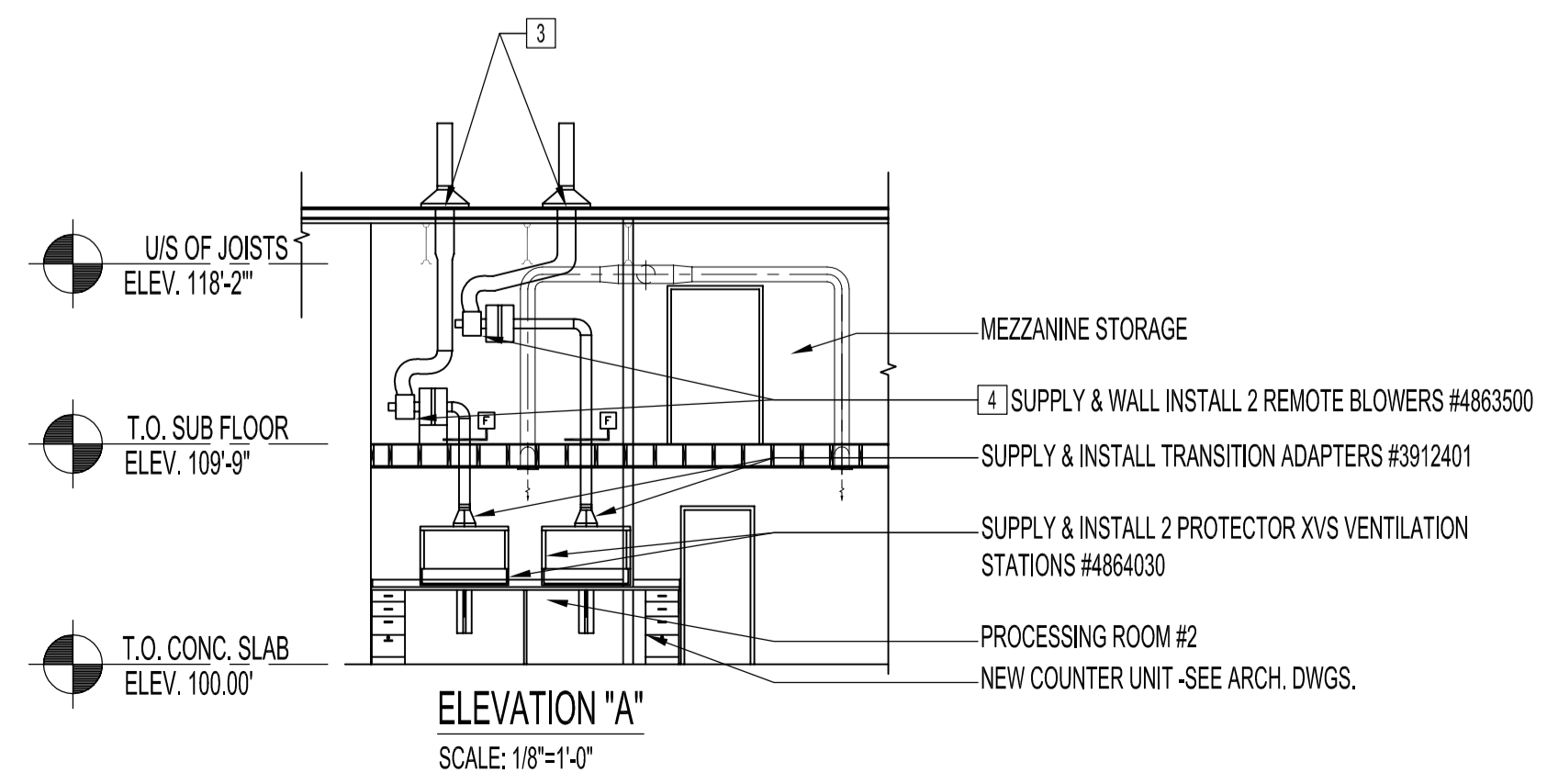
PARTIAL SECOND FLOOR PLAN - RENOVATION
 SCALE: 1/8"=1'-0"

MECHANICAL LEGEND

	GRILLE TYPE
	GRILLE SIZE
	CFM
	GRILLE TYPE
	GRILLE SIZE
	CFM
	SUPPLY AIR GRILLE
	VOLUME DAMPER
	FIRE DAMPER
	EXHAUST BLOWER

GRILLE SCHEDULE

TYPE	DESCRIPTION	MANUFACTURER
A	FIRE-RATED SQUARE PLAQUE DIFFUSER, MODEL SPD-FR, WHITE, C/W OPTIONAL VOLUME CONTROLLER	E.H. PRICE 8" / 12" x 12" SPD-FR / B12 C/W OPTIONAL VOLUME CONTROLLER
B	SQUARE PLAQUE DIFFUSER, MODEL SPD, WHITE	E.H. PRICE 8" / 24" x 24" SPD / B12
C	SQUARE PLAQUE DIFFUSER, MODEL SPD, WHITE	E.H. PRICE 6" / 12" x 12" SPD / B12



ELEVATION "A"
 SCALE: 1/8"=1'-0"

- DEMOLITION NOTES**
- REMOVE SPRINKLER HEAD.
 - REMOVE CEILING SUPPLY AIR GRILLE.
 - REMOVE DUCT AT LOCATION SHOWN TO CEILING SUPPLY AIR GRILLE FOR NEW EXTENSION, SEE RENOVATION PLAN.
- RENOVATION NOTES**
- SUPPLY & INSTALL NEW SPRINKLER COMPONENTS TO NEW LOCATIONS SHOWN. NEW SPRINKLER COMPONENTS TO MATCH EXISTING OR TO CONFORM TO NEW CONDITIONS. SPRINKLER HEAD LOCATIONS SHOWN ARE GENERAL ARRANGEMENT ONLY. CONTRACTOR SHALL ENSURE PLACEMENT, SUPPORT, SPRINKLER TYPE AND COVERAGE FOR ALL AREAS ARE IN ACCORDANCE TO ALL APPLICABLE CODES.
 - NEW SPIRAL PIPE SUPPLY DUCT CONNECTION POINT TO MAIN FLOOR CEILING SUPPLY GRILLES. SUPPLY & INSTALL WITH NEW COMPONENTS SHOWN.
 - PROVIDE A WATERTIGHT SEAL W/ FLASHING AT ROOFTOP WHERE DUCTWORK EXITS ROOF. NEW VENT STACK ROOF LOCATION SHALL NOT BE WITHIN 10 FEET OF EXISTING EXHAUST OR FRESH AIR INLET. FIELD SURVEY ROOF EQUIPMENT LOCATIONS TO PREVENT POSSIBLE EXHAUST FUMES MIGRATING BACK INTO BUILDING.
 - EACH STICKY FILTER & REMOTE BLOWER FOR EACH UNIT ARE NOT TO BE LOCATED NEXT TO EACH OTHER. PROVIDE MINIMUM DISTANCES FOR PROPER FILTRATION.
 - INSTALL & SUPPORT SPIRAL PIPE DUCT BETWEEN WOOD JOIST.
 - SUPPLY & INSTALL NEW SUPPLY DUCT WITH 1" THICK INTERIOR ACOUSTICAL LINING.
 - SUPPLY & INSTALL NEW FLEXIBLE SUPPLY DUCT WITH 1" THICK INTERIOR ACOUSTICAL LINING. ROUTE AS SHOWN IN "U-SHAPE".

NOTES :

THESE DRAWINGS SHALL NOT BE SCALED.

THE CONTRACTOR SHALL VISIT THE SITE AND SATISFY ONESELF ALL DIMENSIONS, DATUM, AND DETAILED INFORMATION SHOWN ARE CORRECT.

THE CONTRACTOR IS TO REVIEW AND COORDINATE ALL ARCHITECTURAL, MECHANICAL, ELECTRICAL AND STRUCTURAL DRAWINGS FOR ADDITIONAL OPENINGS THROUGH FLOORS, WALLS, AND CEILINGS FOR DUCT, PIPE & ELECTRICAL RISERS AND ALL OPENINGS NOT SHOWN ON DRAWINGS.

ALL OPENINGS THROUGH FIRE ASSEMBLIES ARE TO BE FIRE STOPPED AND SEALED WITH ULC APPROVED FIRE STOPPING TO MAINTAIN THE INTEGRITY OF THE FIRE SEPARATION, AND PROVIDE A SMOKE-TIGHT BARRIER.

ALL PRODUCTS AND MATERIALS TO BE USED AND INSTALLED SHALL CONFORM WITH MANUFACTURER'S SPECIFICATIONS & APPLICABLE CODES.

THE CONTRACTOR SHALL BE RESPONSIBLE TO PATCH AND MAKE GOOD ALL EXISTING CONSTRUCTION AFFECTED BY THE REMOVAL OF ALL ITEMS FORMING THE PART OF THE RENOVATION WORK.

WHERE NEW FLOORING AND BASE IS TO BE INSTALLED IN EXISTING AREAS (REFER TO FLOOR PLAN AND ROOM SCHEDULE) THE EXISTING FLOORING SURFACE AND BASE MUST BE REMOVED, UNLESS OTHERWISE NOTED. ALL FLOOR SURFACES SHALL BE PREPARED IN ACCORDANCE TO MANUFACTURER'S RECOMMENDATIONS FOR INSTALLATION OF NEW FLOOR.

WHERE PAINTING OF EXISTING WALLS IS INDICATED ON THE ROOM SCHEDULE, THESE WALLS MUST BE CLEANED OF ANY EXISTING WALL COVERING, PATCHED & PREPARED TO ACCEPT NEW MATERIAL, UNLESS OTHERWISE NOTED.

TEST, ADJUST & BALANCE (TAB) AS SHOWN IN ACCORDANCE WITH DIVISION 15, SECTION 15990. REPLACE FILTERS PRIOR TO TAB. SUBMIT AIR BALANCING REPORT FOR APPROVAL.

ORIGINAL STAMPED BY: DOUG PALEY, P.ENG.
 DATE: 2006.11.10

NO.	REVISION/DESCRIPTION	BY	DATE
SEALS			

DRAWN BY	CHECKED BY	APPROVED
MMK/DTA	USER APPROVAL	

CITY OF WINNIPEG
 PLANNING, PROPERTY &
 DEVELOPMENT DEPARTMENT
 CIVIC ACCOMMODATIONS DIVISION
 300 - 65 GARRY ST. R3C 4K4

PROJECT
 STORAGE FACILITY
 DRUG PROCESSING UNIT
 & POLYGRAPH UNIT
 860 EMPRESS STREET

SHEET TITLE
 PARTIAL MAIN & SECOND FLOOR PLANS
 MECHANICAL DEMOLITION & RENOVATION
 & SPRINKLER ADDITION

SCALE	PROJECT NO.	SHEET NO.
AS SHOWN	2006-054	M1