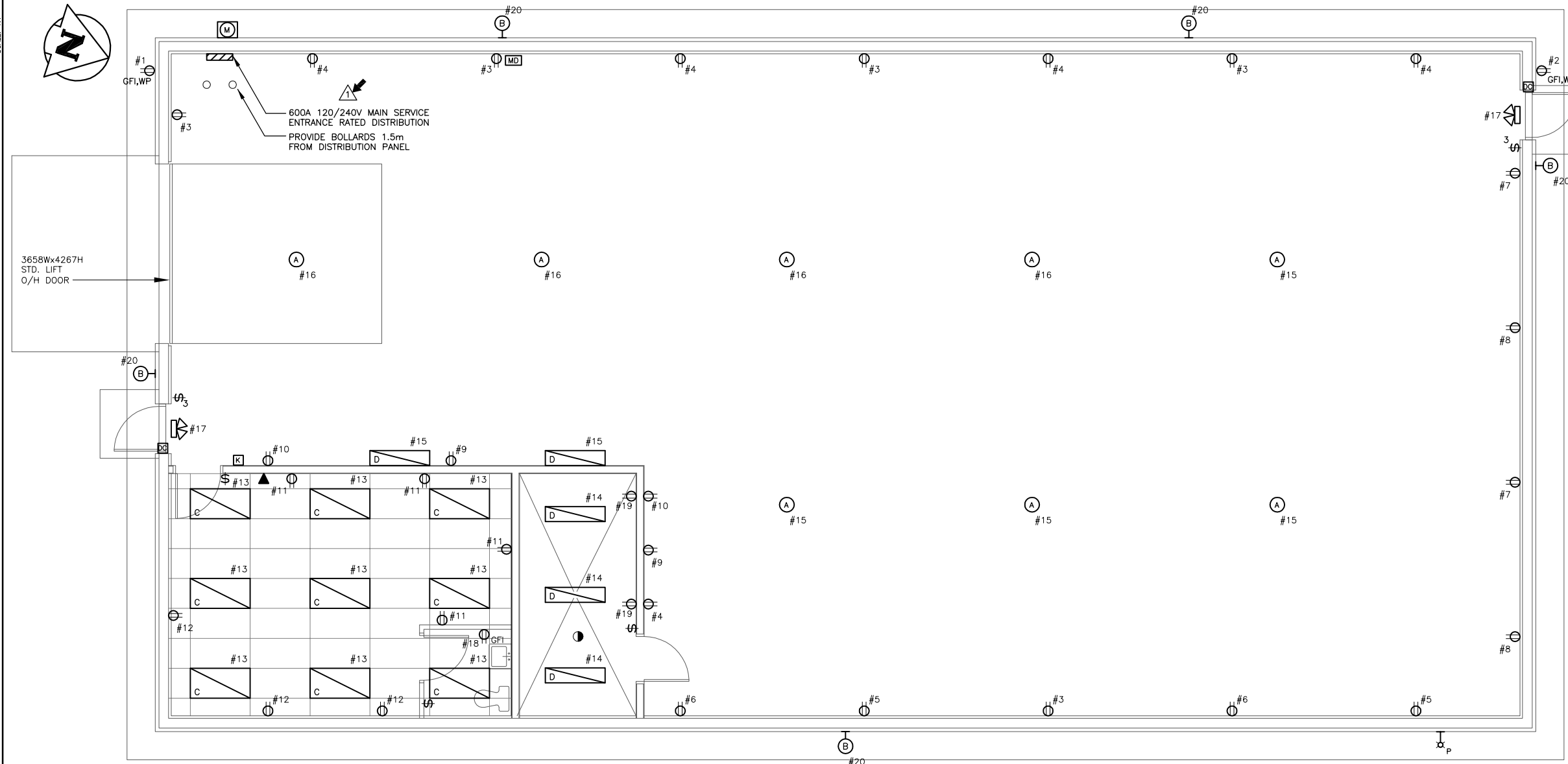


SCALE: 1:1



NOTES:

- EACH TO BE PROVIDED WITH 15A/1P LOCAL DISCONNECT. MAGNETIC STARTER WITH HAND-OFF-AUTO BY CONTRACTOR.
- PROVIDE WITH LOCAL DISCONNECT.
- SEE MECHANICAL DRAWINGS FOR EQUIPMENT LOCATIONS.

LEGEND:

- (A) 250W PULSE START METAL HALIDE FIXTURE WITH 22" LOWBAY REFRACTOR
- (B) HIGH PRESSURE SODIUM WALLPACK, POLYCARBONATE LENS, HIGH CUT-OFF HPF BALLAST
- (C) 3-LAMP 2'x4' SPEC GRADE TROFFER c/w PREMIUM BALLAST
- (D) 2-LAMP 2'x4' SPEC GRADE WRAP c/w PREMIUM BALLAST
- ⊗ P PHOTOCELL
- ⊗ EXIT SIGN WITH INTEGRAL EMERGENCY HEADS
- MD MOTION DETECTOR
- DP DISTRIBUTION PANEL
- ⊖ RECEPTACLE
- ⊖ DOOR CLOSER
- K SECURITY KEYPAD
- ▲ TELEPHONE
- # DENOTES CIRCUIT NUMBER FOR MINOR LOADS
- HEAT DETECTOR (CONNECT TO SECURITY SYSTEM)
- M UTILITY METER

PLAN
SCALE: 1:50

EQUIPMENT SCHEDULE – OPTION 2 (NOTE 3)

TAG	DESCRIPTION	CAPACITY (kW)	VOLTAGE	BREAKER	FEEDER SIZE	NOTES
UH-1	ELECTRIC UNIT HEATER	10	240/1/60	60A / 2P	3/C #6 AWG	LOCAL DISCONNECT BY CONTRACTOR
UH-2	ELECTRIC UNIT HEATER	7.5	240/1/60	40A / 2P	3/C #8 AWG	LOCAL DISCONNECT BY CONTRACTOR
UH-3	ELECTRIC UNIT HEATER	10	240/1/60	60A / 2P	3/C #6 AWG	LOCAL DISCONNECT BY CONTRACTOR
UH-4	ELECTRIC UNIT HEATER	10	240/1/60	60A / 2P	3/C #6 AWG	LOCAL DISCONNECT BY CONTRACTOR
UH-5	ELECTRIC UNIT HEATER	7.5	240/1/60	40A / 2P	3/C #8 AWG	LOCAL DISCONNECT BY CONTRACTOR
UH-6	ELECTRIC UNIT HEATER	5	240/1/60	30A / 2P	3/C #8 AWG	LOCAL DISCONNECT BY CONTRACTOR
BH-1	BASEBOARD HEATER	0.3	120/1/60	15A / 1P	2/C #12 AWG	WIRE TO THERMOSTAT
BH-2	BASEBOARD HEATER	1.5	120/1/60	20A / 1P	2/C #10 AWG	WIRE TO THERMOSTAT
BH-3	BASEBOARD HEATER	1.5	120/1/60	20A / 1P	2/C #10 AWG	WIRE TO THERMOSTAT
HRV-1	HEAT RECOVERY VENTILATOR	.	120/1/60	15A / 1P	2/C #12 AWG	PROVIDE CONTROLS AS REQUIRED
HC-1	HEATING COIL	6	240/1/60	35A / 2P	3/C #8 AWG	LOCAL DISCONNECT BY CONTRACTOR
MD-1	MOTORIZED DAMPER	.	120/1/60	15A / 1P	2/C #12 AWG	PROVIDE CONTROLS AS REQUIRED
MD-2	MOTORIZED DAMPER	.	120/1/60	15A / 1P	2/C #12 AWG	PROVIDE CONTROLS AS REQUIRED
MD-3	MOTORIZED DAMPER	.	120/1/60	15A / 1P	2/C #12 AWG	PROVIDE CONTROLS AS REQUIRED
EF-1	EXHAUST FAN	1/2 HP	120/1/60	15A / 1P	2/C #12 AWG	WIRE TO LOCAL SWITCH (SEE MECH)

EQUIPMENT SCHEDULE – OPTION 1 (NOTE 3)

TAG	DESCRIPTION	CAPACITY	HEAD (kPa)	HP	VOLTAGE	BREAKER	FEEDER SIZE	NOTES
PU-1	PUMP	1.26 L/s	50	1/3	120/1/60	15A / 1P	2C#12 AWG	NOTE 1
PU-2	PUMP	1.26 L/s	50	1/3	120/1/60	15A / 1P	2C#12 AWG	NOTE 1
PU-3	PUMP	1.26 L/s	60	1/2	120/1/60	15A / 1P	2C#12 AWG	NOTE 1
PU-4	PUMP	1.26 L/s	60	1/2	120/1/60	15A / 1P	2C#12 AWG	NOTE 1
B-1	BOILER	45 kW			240/1/60	250A / 2P	3C 250MCM	NOTE 2
GP-1	GLYCOL FILL PACKAGE				24VDC	15A / 1P	2C#12 AWG	c/w 120VAC TO 24VDC ADAPTER

NOTE:
IF ELECTRIC UNIT HEATER OPTION 2 IS ACCEPTED:
- MECHANICAL ROOM IS NOT REQUIRED
- NORTH WALL OF PARTS STORAGE TO BE 1 1/2 HR. FIRE-RATED



KGS GROUP CONSULTING ENGINEERS & PROJECT MANAGERS
WINNIPEG (204) 896-1209 THUNDER BAY (807) 345-2233

DESIGNED BY AP	CHECKED BY
DRAWN BY GCN	APPROVED BY
HOR. SCALE VERTICAL AS NOTED	RELEASED FOR CONSTRUCTION
NO. 1 ISSUED FOR ADDENDUM 1 DEC. 1/06 AP	NO. 0 ISSUED FOR TENDER NOV. 16/06 AP
NO. REVISIONS	DATE BY DATE NOV. 2006



THE CITY OF WINNIPEG
PLANNING PROPERTY AND DEVELOPMENT
Winnipeg SERVICES DEPARTMENT

RIVER PATROL BOAT STORAGE BUILDING
ELECTRICAL PLAN & SCHEDULES

SHEET 2 OF 2
CAD FILE DRAWING NUMBER 06-107-17E02
PROJECT NUMBER 2005-081

CONSULTANT DRAWING NO. 06-107-17-E2

P:\Projects\2006\06-0107-17\Elect\Draws\06-107-17E02.dwg - Tab: E2 Plotted By: SHidebrand 12/01/2006 [Fri, 2:42pm]