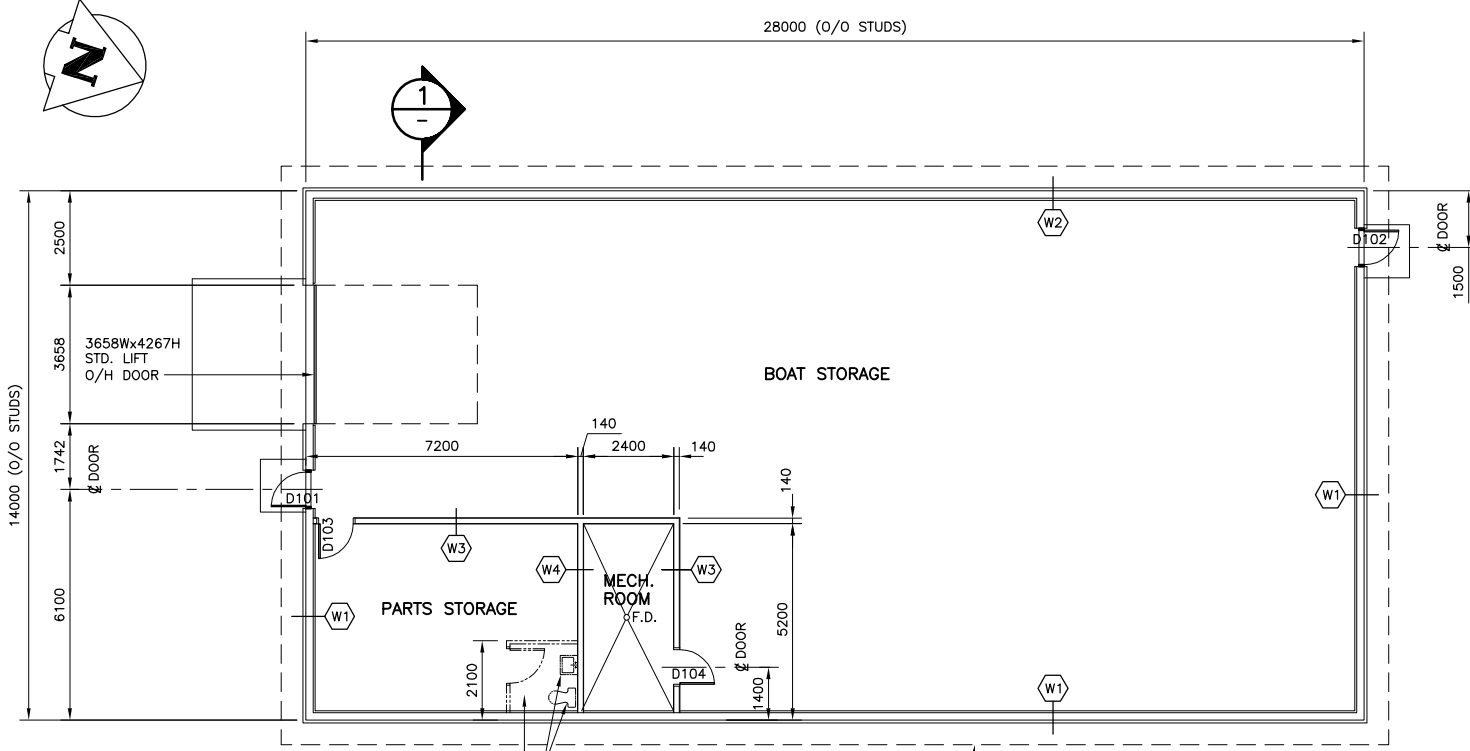
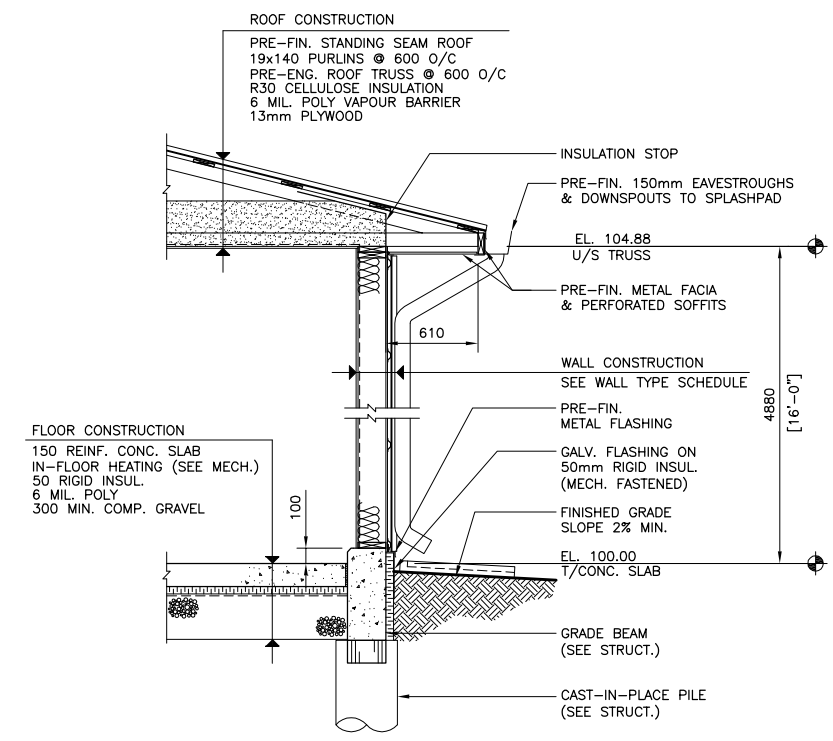
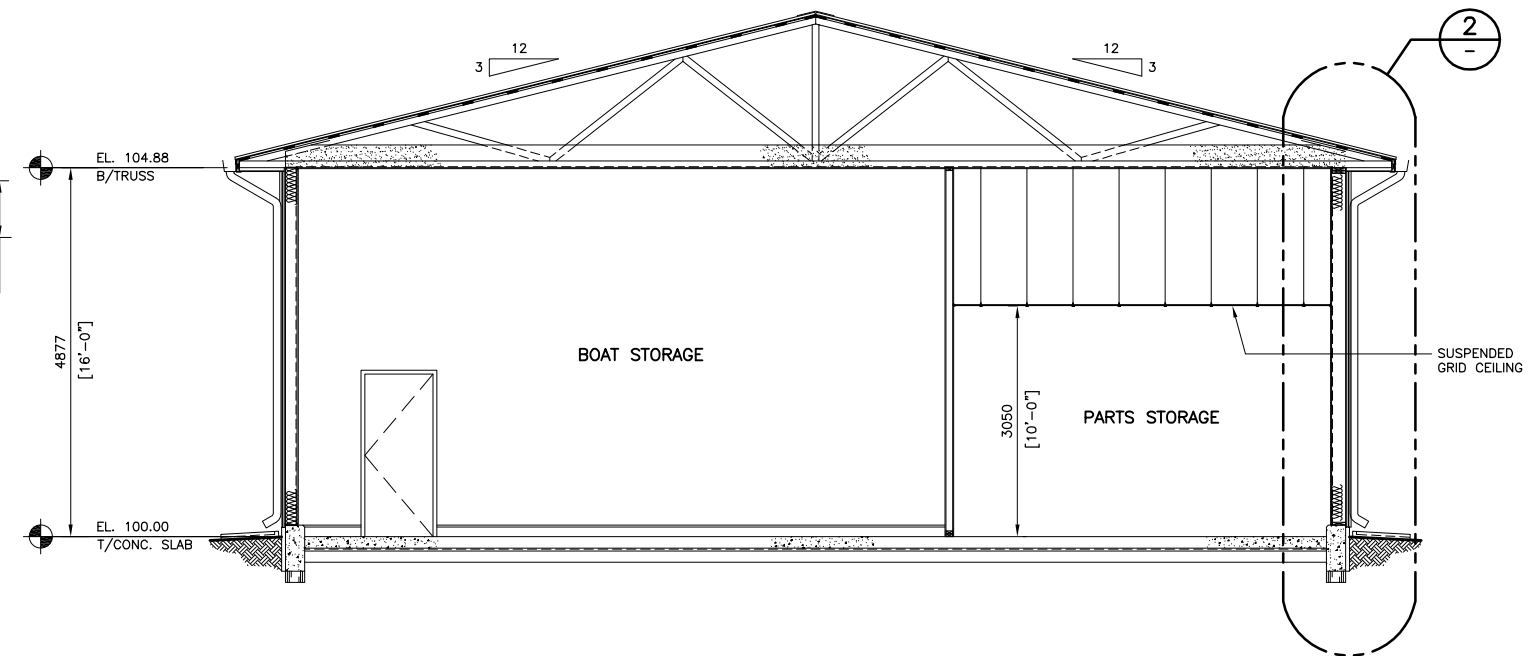


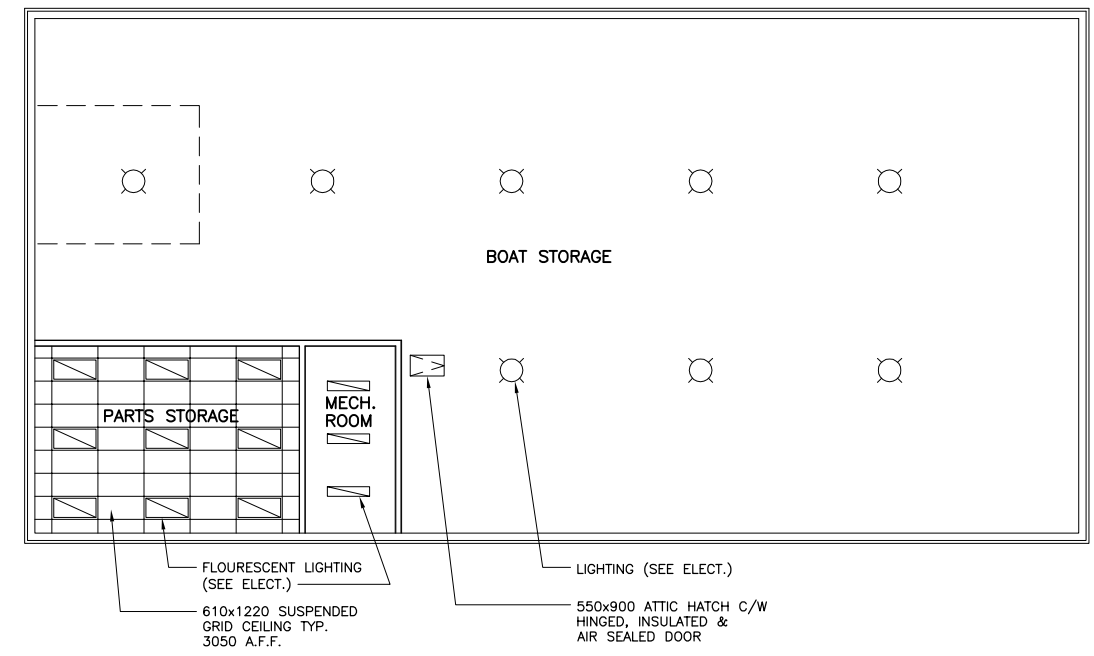
SCALE: 1:1



NOTE:
IF ELECTRIC UNIT HEATER OPTION 2 IS ACCEPTED:
- MECHANICAL ROOM IS NOT REQUIRED
- NORTH WALL OF PARTS STORAGE TO BE 1 1/2 HR. FIRE-RATED



- WALL TYPE SCHEDULE**
- NOTES:**
FIRE STOP ALL PERIMETERS AND PENETRATIONS THROUGH FIRE-RATED PARTITIONS AND WALLS.
- W1) TYPICAL EXTERIOR CONSTRUCTION U/N**
- PRE-FIN. METAL CLADDING
 - METAL FURRING CHANNELS
 - TYVEK MOISTURE BARRIER
 - 11mm OSB SHEATHING
 - 38x184 STUDS @ 600 O/C
 - R20 BATT. INSULATION
 - 6 MIL. POLY VAPOUR BARRIER
 - INTERIOR FINISH:
 - 13mm PLYWOOD (BOAT STORAGE, MECH. RM)
 - 13mm GYPSUM BOARD (PAINT) (PARTS STORAGE)
- W2) EXTERIOR WALL CONSTRUCTION 1 HOUR FIRE-RATED (ULC W424)**
- PRE-FIN. METAL CLADDING
 - METAL FURRING CHANNELS (HORIZ.)
 - TYVEK MOISTURE BARRIER
 - 16mm DENS-GLASS GOLD TYPE 'X' SHEATHING
 - 18 ga. x75mm DIAGONAL BRACING FROM TOP TRACK TO BOT. TRACK 'V' PATTERN FOR LENGTH OF WALL START AT TOP OF WALL
 - 203mm (18 GA.) STEEL STUDS @ 600 O/C C/W LATERAL CHANNEL BRACING @ 1200 O/C
 - R20 BATT. INSULATION
 - 18 ga. x75mm DIAGONAL BRACING FROM BOT. TRACK TO TOP TRACK 'V' PATTERN FOR LENGTH OF WALL START AT BOTTOM OF WALL
 - 6 MIL. POLY VAPOUR BARRIER
 - 16mm TYPE 'X' GYPSUM BOARD (TAPED)
- W3) 1 1/2 HOUR RATED PARTITION**
- 2 LAYERS 13mm TYPE 'X' GYPSUM BOARD
 - 38x140 STUDS @ 600 O/C
 - 2 LAYERS 13mm TYPE 'X' GYPSUM BOARD
- W4) 1 HOUR RATED PARTITION**
- 16mm TYPE 'X' GYPSUM BOARD
 - 38x140 STUDS @ 600 O/C
 - 16mm TYPE 'X' GYPSUM BOARD



NOTE: SEE MECHANICAL & ELECTRICAL FOR ADDITIONAL INFORMATION AND SERVICE LOCATIONS.



B.M. ELEV.	DESIGNED BY	CHECKED BY
	RJL	
	DRAWN BY	APPROVED BY
	JG/SNH	
	HOR. SCALE	RELEASED FOR CONSTRUCTION
	VERTICAL AS NOTED	
0	ISSUED FOR TENDER	NOV.16/06
	NO.	REVISIONS
	DATE	BY
	DATE	OCT. 2006



KGS GROUP
CONSULTING ENGINEERS & PROJECT MANAGERS
WINNIPEG (204) 896-1209
THUNDER BAY (807) 345-2233

THE CITY OF WINNIPEG
PLANNING PROPERTY AND DEVELOPMENT
Winnipeg SERVICES DEPARTMENT

RIVER PATROL BOAT STORAGE BUILDING
FLOOR PLAN, REFLECTED CEILING PLAN
BUILDING SECTION AND WALL SECTION

SHEET **3** OF **5**
CAD FILE DRAWING NUMBER 06-107-17-B-01-r0.dwg
PROJECT NUMBER **2005-081**

CONSULTANT DRAWING NO. **06-0107-17-B1**

P:\Projects\2006\06-0107-17\Civil\Drawings\06-0107-17-B-01-r0.dwg - Tab: B1 Plotted By: Shildbrand 11/17/2006 [Fri 12:58pm]