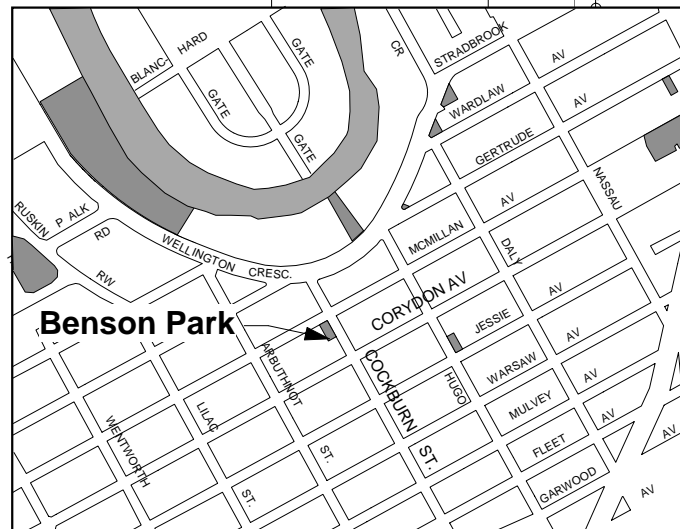
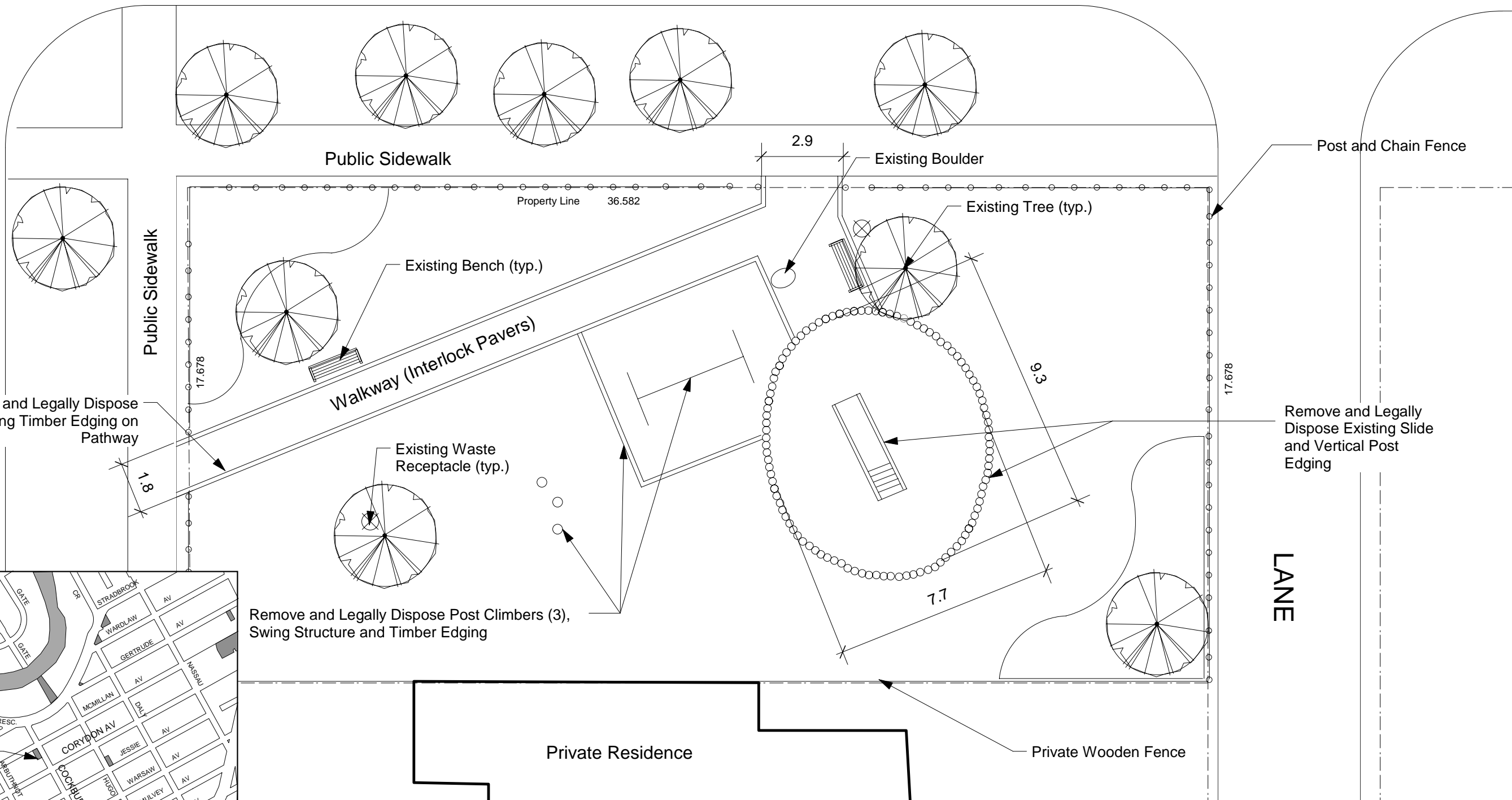


# COCKBURN STREET

McMILLAN AVE

LANE

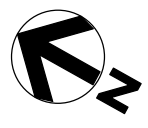


**Context Map** 1:15,000

Remove and Legally Dispose Post Climbers (3), Swing Structure and Timber Edging

Private Residence

Private Wooden Fence



LOCATION OF UNDERGROUND STRUCTURES AS SHOWN ARE BASED ON THE BEST INFORMATION AVAILABLE BUT NO GUARANTEE IS GIVEN THAT ALL EXISTING UTILITIES ARE SHOWN OR THAT THE GIVEN LOCATIONS ARE EXACT. CONFIRMATION OF EXISTENCE AND EXACT LOCATION OF ALL SERVICES MUST BE OBTAINED FROM THE INDIVIDUAL UTILITIES BEFORE PROCEEDING WITH CONSTRUCTION.



THE CITY OF WINNIPEG  
 Planning, Property and Development Department  
 Planning and Land Use Division  
 Unit 15 - 30 Fort Street, Winnipeg, MB, (R3C 4X5)

DESIGNED BY	CH/DB	CHECKED BY	DB	APPROVED BY
DRAWN BY	CH/DB	RELEASED FOR CONSTRUCTION		
HORIZ. SCALE	1 : 150			
VERT. SCALE				
DATE	May/07	MANAGER, PLANNING AND LAND USE DIVISION	DATE	

DRAWING TITLE	CAD DRAWING NO.
<b>BENSON PARK</b> Existing Conditions/Demolition	DRAWING NO. <b>B.102-A</b>