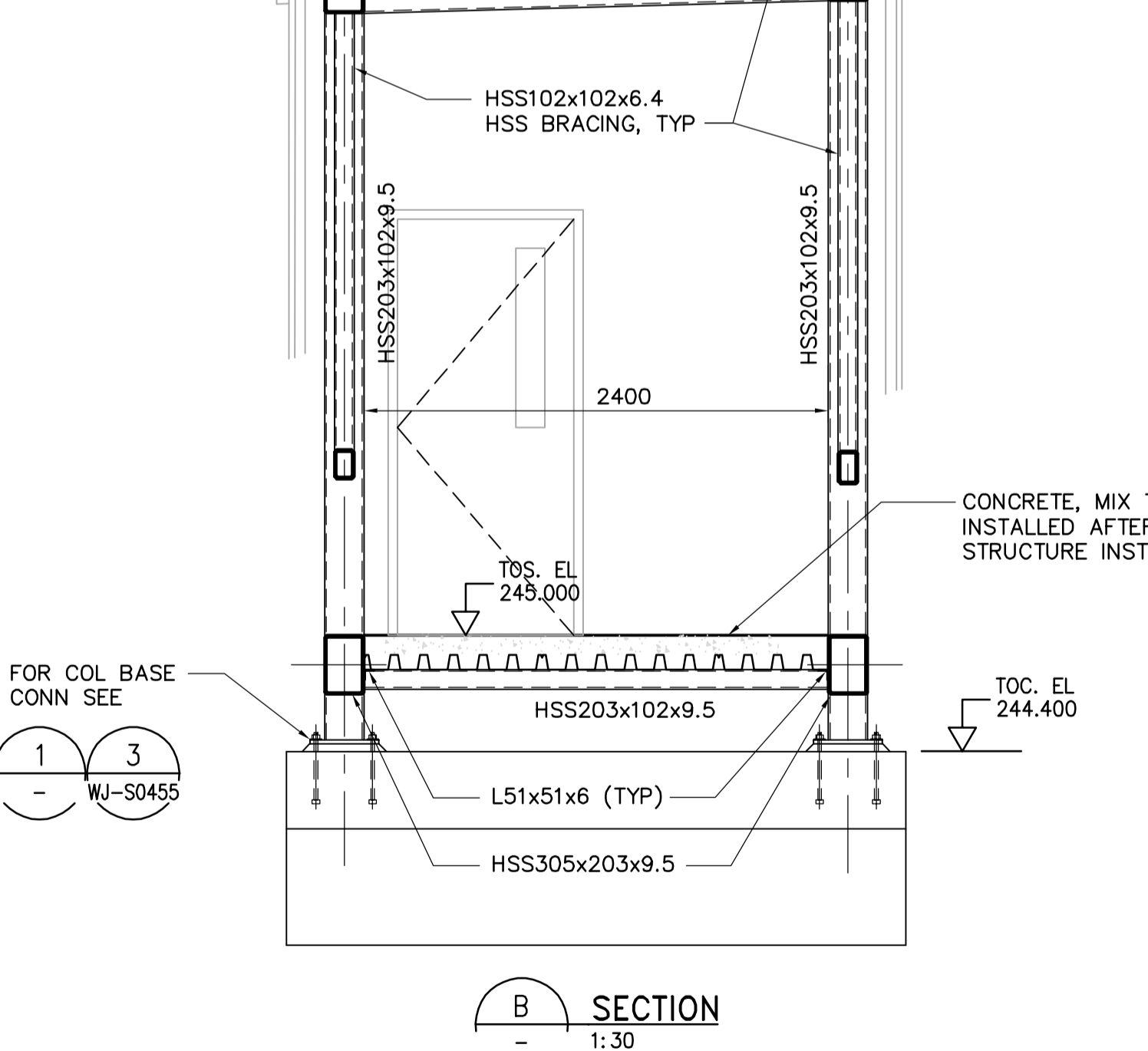
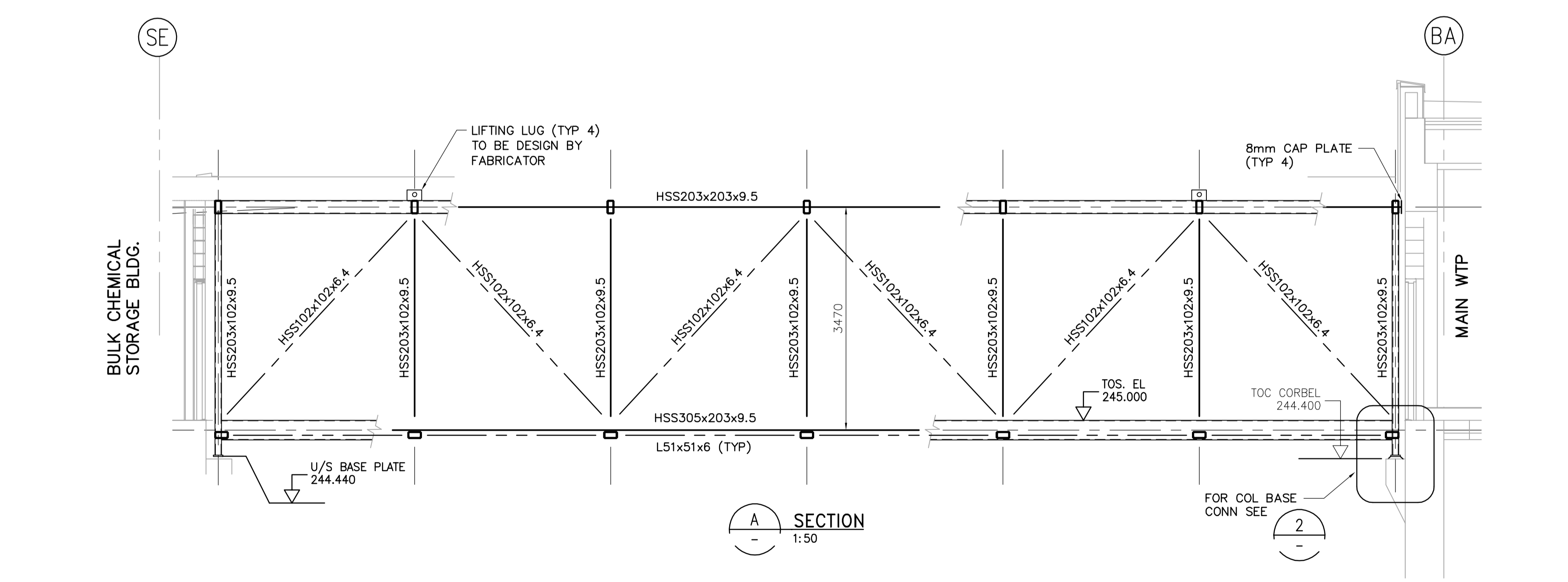
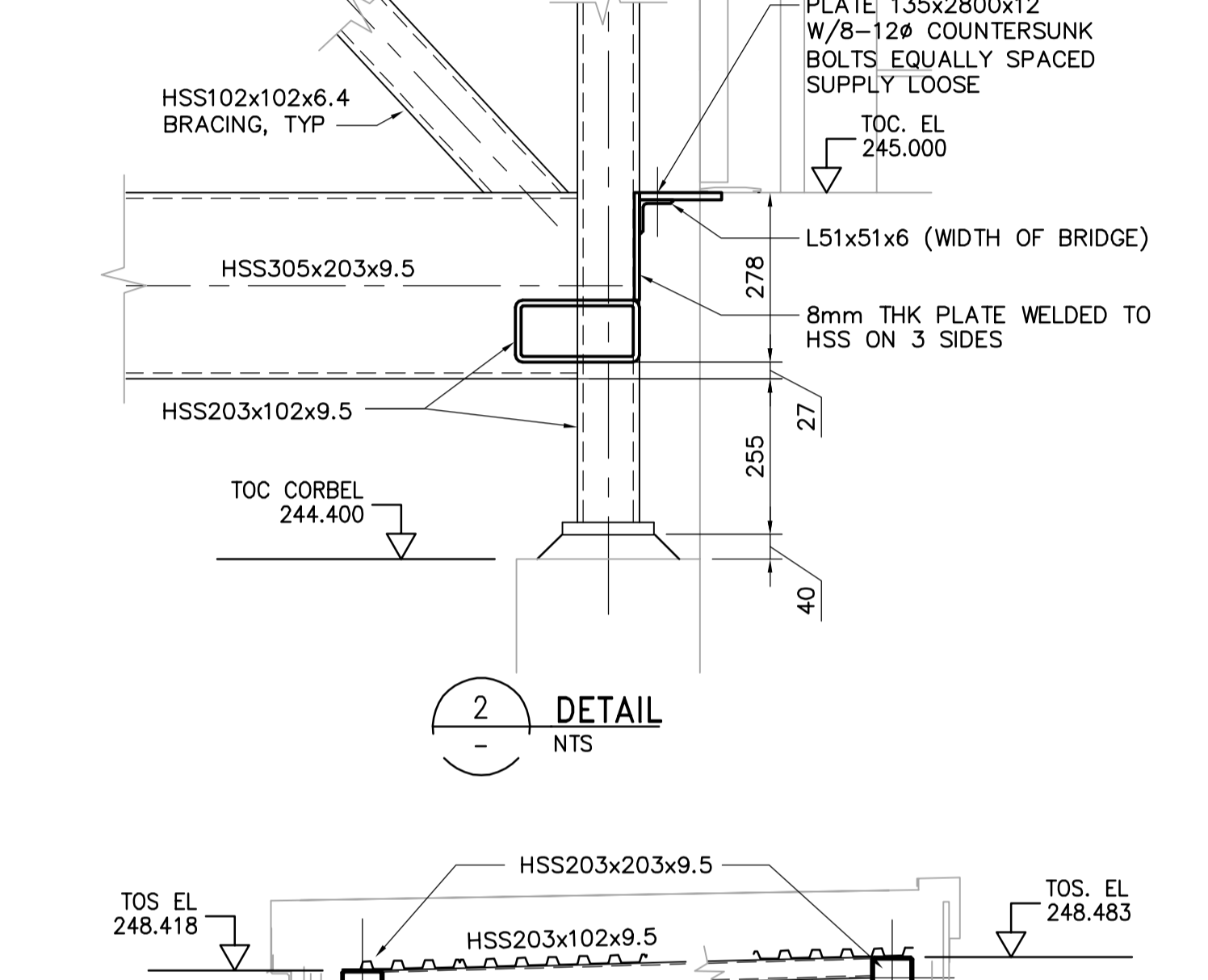
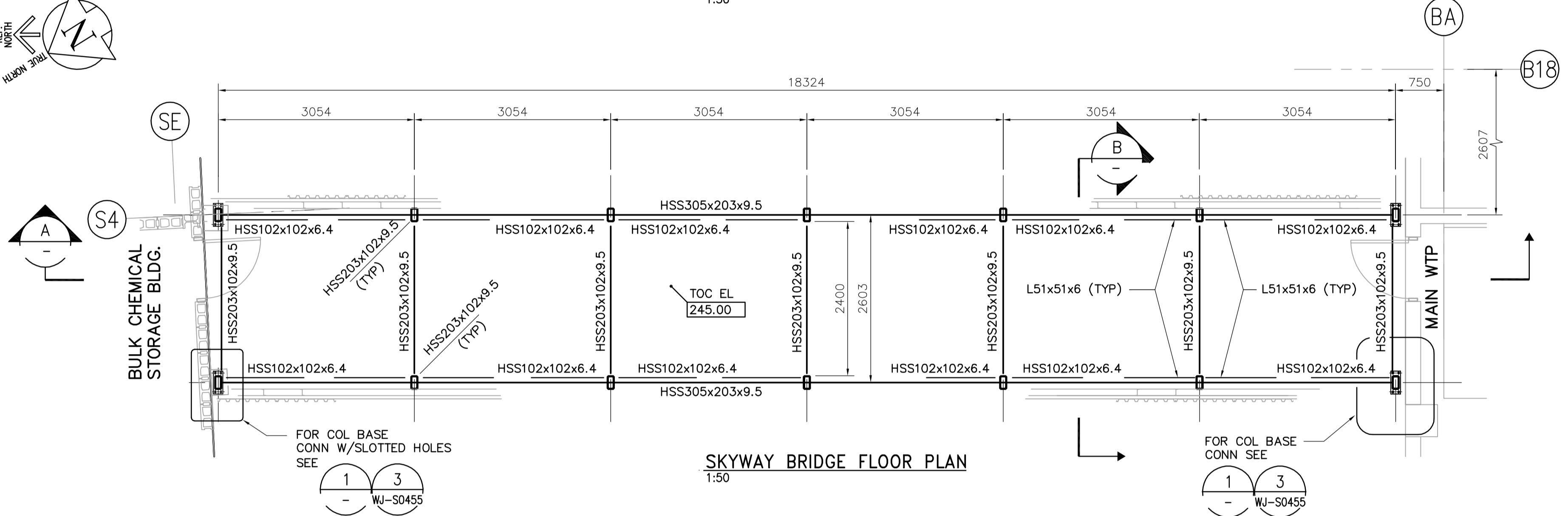


**NOTES:**

- ROOF DECKING:
  - 38x0.91 THK STL ROOF DECK
  - 2 SPAN CONT
  - SUPPORT FASTENERS: 915/3
  - SIDE LAP FASTENERS: 2-#10 TEK SCREWS PER SPAN
- FLOOR DECKING:
  - 76x0.91 GALVANIZED COMPOSITE METAL DECKING w/ 176mm CONCRETE TOPPING SLAB w/ 15M @ 300 EW CRTD.
  - WELD (20mm) EDGE RIBS OF PANELS AT EACH SUPPORT. SPACE ADDITIONAL WELDS AND AVERAGE OF 300mm APART BUT NOT MORE THAN 460mm.
  - FASTEN SIDE LAPS AND PERIMETER EDGE OF UNITS BETWEEN SUPPORTS AT INTERVALS NOT EXCEEDING 300mm ON CENTER, USING #10 SELF DRILLING SCREW.
  - FASTEN SIDE SEAMS WITH #12 TEK SELF TAPPING SCREWS AT 300mm SPACING.
- FOR GENERAL NOTES SEE DWG WS-S0001. IN CASE OF CONFLICTING INFORMATION, WJ-SERIES DRAWINGS GOVERN.
- FABRICATE AND INSTALL FULLY WELDED STEEL STRUCTURE. WELD JOINTS ALL AROUND. SEE CISC HANDBOOK, 2004 ED. TABLE 3-46.



<p><b>APEGN</b> Certificate of Authorization CH2M HILL Canada Ltd. No. 1441 Expiry: April 30, 2007</p>	<p>B.M. ELEV.</p> <table border="1"> <tr><td> </td><td> </td><td> </td></tr> <tr><td> </td><td> </td><td> </td></tr> <tr><td> </td><td> </td><td> </td></tr> <tr><td> </td><td> </td><td> </td></tr> </table>													<p>Frederickson Cooper ARCHITECTS</p>	<p>EarthTech A Tyco International Ltd. Company</p>	ENGINEER'S SEAL	<p><b>THE CITY OF WINNIPEG</b> WATER AND WASTE DEPARTMENT ENGINEERING DIVISION</p>
DESIGNED BY DK	CHECKED BY AP	ORIGINAL SIGNED BY D. KRUGER	CITY FILE NUMBER														
DRAWN BY PM	APPROVED BY AHL	2007/03/12	SHEET OF														
SCALE: AS NOTED	RELEASED FOR CONSTRUCTION BY: R. SOROKOWSKI	CONSULTANT DRAWING NO. WJ-S0402	CITY DRAWING NUMBER 1-0601J-A-S0402-001-000														
00 ISSUED FOR ADDENDUM 1	07/03/12 DK	DATE 2006/10/30	DATE 2007/03/12	<p>WATER TREATMENT PLANT SODIUM HYPOCHLORITE BUILDING SODIUM HYPOCHLORITE AND CHEMICAL STORAGE BUILDINGS</p> <p>STRUCTURAL SKYWAY BRIDGE DETAILS</p>													