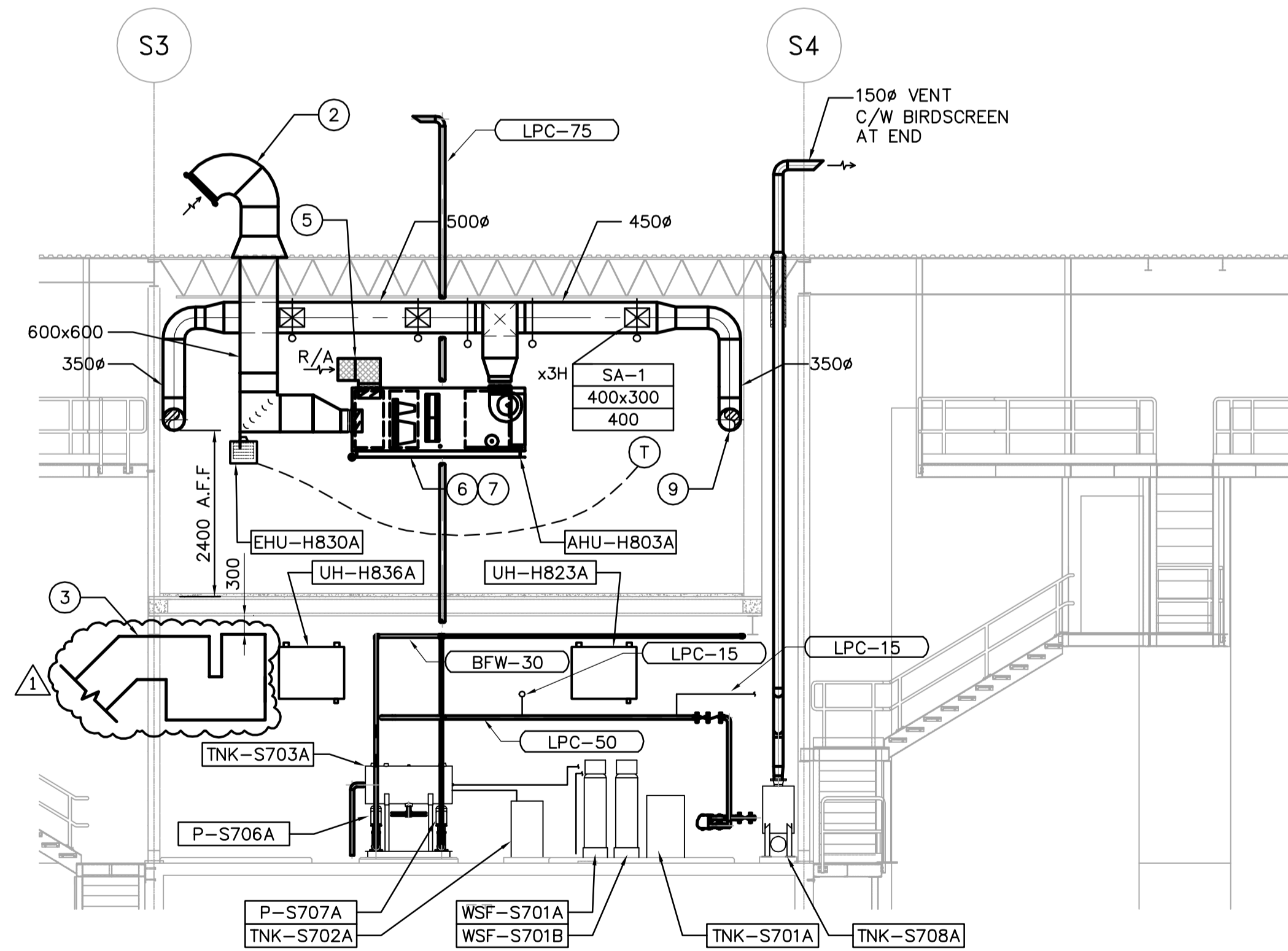


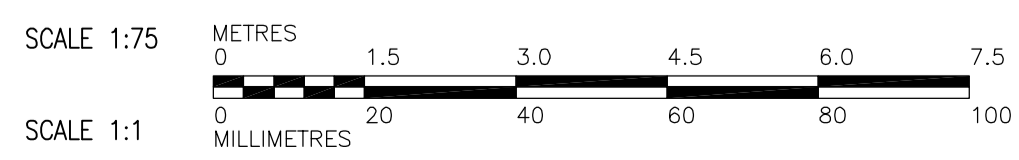
E SECTION
WS-H110 1:75



F SECTION
WS-H110 1:75

- DRAWING NOTES**
- ① 13mm SQUARE WIRE MESH WELDED TO END.
 - ② HEAT TRACING ON BIRDSCREEN.
 - ③ 1000x700 COMBUSTION AIR DUCT c/w EXTERNAL THERMAL INSULATION FOR GAS BOILERS (4). MAINTAIN 300mm MIN. BETWEEN DUCT OPENING AND MECHANICAL ROOM CEILING.
 - ④ 300x300 VENTILATION DUCT (AS PER GAS CODE) FROM MECHANICAL ROOM UP THROUGH SHAFT AND UP THROUGH ROOF. 750x750 EXHAUST GRILLE ON MECHANICAL ROOM WALL. SEE DRAWING WS-H402 TYPICAL GOOSENECK DETAIL 5.
 - ⑤ 13mm SQUARE WIRE MESH WELDED TO END AND 25 ACOUSTIC LINER.
 - ⑥ CONDENSATE DRAIN DOWN TO MECHANICAL ROOM.
 - ⑦ REFRIGERATION LINESET UP TO CONDENSING UNIT ON ROOF.
 - ⑧ SEE DRAWING WS-H0403 EXHAUST FAN DETAIL 6.
 - ⑨ BOTTOM OF DUCT ELEVATION 2400 A.F.F.

- GENERAL NOTES**
1. COORDINATE WITH OTHER TRADES.



APECA
Certificate of Authorization
Earth Tech Canada Inc.
No. 730 Expiry: April 30, 2007

DESIGNED BY	LJW	CHECKED BY	PVL/AMA
DRAWN BY	LJW	APPROVED BY	AHL
SCALE:	1:75	RELEASED FOR CONSTRUCTION BY:	R. SOROKOWSKI
ISSUED FOR TENDER	07/01/31	DATE	2006/09/12
NO. REVISIONS		DATE	2007/01/31

CH2M HILL
Frederickson Cooper
ARCHITECTS

EarthTech
A Tech International Ltd. Company

ENGINEER'S SEAL
ORIGINAL SIGNED BY
A. M. AFTANAS
2007/01/31
CONSULTANT DRAWING NO.
WS-H0204

THE CITY OF WINNIPEG
WATER AND WASTE DEPARTMENT
ENGINEERING DIVISION

WATER TREATMENT PLANT
BULK CHEMICAL STORAGE
SODIUM HYPOCHLORITE AND CHEMICAL STORAGE BUILDING

MECHANICAL
SECTIONS E & F

CITY FILE NUMBER
SHEET OF
CITY DRAWING NUMBER
1-0601S-A-H0204-001-01D