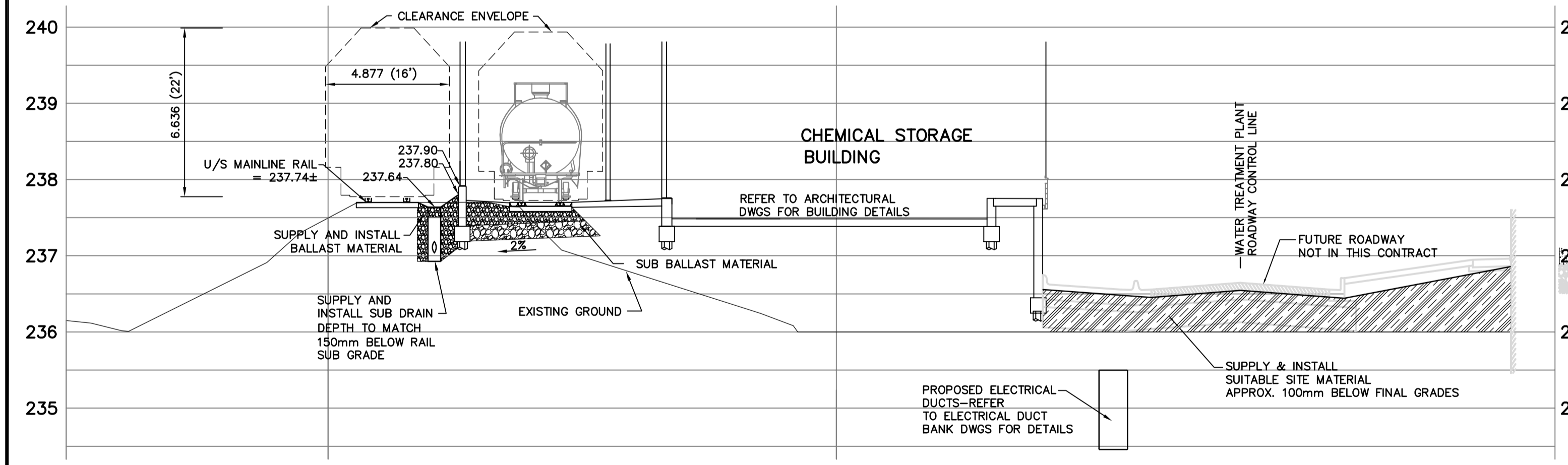
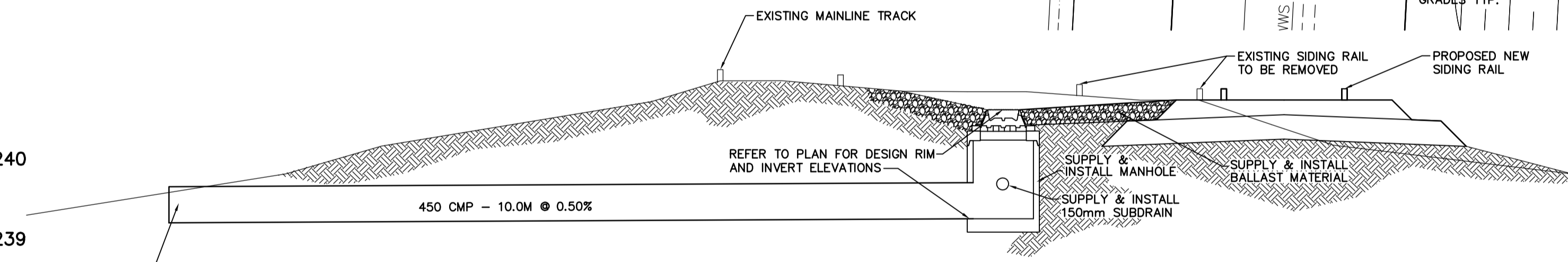


PLAN



1 SECTION H-1:150 V=1:50



2 SECTION - TYPICAL MANHOLE/CULVERT INSTALLATION NTS

CHEMICAL STORAGE BUILDING GRID LINE LAYOUT POINTS
DRAWING COORDINATES ARE UTM NAD83 - SCALE FACTOR 0.99983

GRID LINE	NORTHING	EASTING
S1 @ SA	5524108.476	647976.231
S1 @ SE	5524088.424	647964.985
S6 @ SA	5524084.311	648019.317
S6 @ SE	5524064.259	648008.072

BENCHMARK NOTES:
DRAWING COORDINATES ARE UTM NAD83 - SCALE FACTOR 0.99983

B.M. No.	NORTHING	EASTING	ELEVATION
PILE 136	5523873.734	647764.406	236.242
PILE 133	5523256.606	647782.387	236.056

SODIUM HYPOCHLORITE BUILDING GRID LINE LAYOUT POINTS
DRAWING COORDINATES ARE UTM NAD83 - SCALE FACTOR 0.99983

GRID LINE	NORTHING	EASTING
J1 @ JA	5524121.067	647937.346
J1 @ JH	5524108.246	647930.155
J9 @ JA	5524103.530	647968.614
J9 @ JH	5524090.709	647961.423

NOTE: PILE No. 136 MAY BE REVISED PRIOR TO CONSTRUCTION. CONTRACT ADMINISTRATOR TO PROVIDE NEW ELEVATION AND COORDINATES.

REFERENCE NOTES:
A. ADD 200.00 TO DESIGN GRADES TO OBTAIN GEODETIC DATUM
B. ALL EXISTING UNDERGROUND UTILITIES SHALL BE CONFIRMED PRIOR TO CONSTRUCTION.
C. ALL SITE SURFACE WORKS SHALL BE IN ACCORDANCE WITH THE C.O.W. STANDARD CONSTRUCTION SPECIFICATIONS

METRIC
WHOLE NUMBERS INDICATE MILLIMETRES
DECIMALIZED NUMBERS INDICATE METRES

150 mm W.M.	WATERMAIN	150 mm W.M.	HYDRANT	M.T.S.	CONCRETE ASPHALT PROPERTY LINE	391.0	LIGHT STANDARD ANCHOR
◇	HYDRANT VALVE	+	+	M.T.S.	SURVEY BAR	+	ANCHOR
○	LAND DRAINAGE SEWER	○	○	CONCRETE ASPHALT	ELEVATION	+	POLE
○	WASTEWATER SEWER	○	○	PROPERTY LINE	TREE	+	CONTOURS
○	MANHOLE	○	○	SURVEY BAR	ANODE	+	RAIL X-ING SIGNAL
○	CATCH BASIN	○	○	ELEVATION	CONCRETE SIDEWALK	+	RAILWAY TRACK
○	CURB INLET	○	○	TREE	FENCE	+	DITCH
○	JUNCTIONS	○	○	ANODE		+	
○	CULVERT	○	○	CONCRETE SIDEWALK		+	
○	GAS	○	○	FENCE		+	
---	EXISTING	---	---	EXISTING	---	---	---
---	LEGEND - PLAN	---	---	LEGEND - PLAN	---	---	---
---	PROPOSED	---	---	PROPOSED	---	---	---
---	EXISTING	---	---	EXISTING	---	---	---
---	LEGEND - PLAN	---	---	LEGEND - PLAN	---	---	---
---	PROPOSED	---	---	PROPOSED	---	---	---

Certificate of Authorization
Earth Tech Canada Inc.
No. 730 Expiry: April 30, 2007

Frederickson Cooper
ARCHITECTS

EarthTech
A Tyco International Ltd. Company

DESIGNED BY	BC	CHECKED BY	JC
DRAWN BY	BC	APPROVED BY	AHL
SCALE:	1:250	RELEASED FOR CONSTRUCTION BY:	R. SOROKOWSKI
DATE	2007/01/31	DATE	2007/01/31

CONSULTANT DRAWING NO.
WS-C0001

THE CITY OF WINNIPEG
WATER AND WASTE DEPARTMENT
ENGINEERING DIVISION

WATER TREATMENT PLANT
BULK CHEMICAL BUILDING
SODIUM HYPOCHLORITE AND CHEMICAL STORAGE BUILDINGS

CIVIL
GRADING PLAN AND DETAILS

CITY FILE NUMBER

SHEET OF

CITY DRAWING NUMBER

1-06019-A-C0001-01D