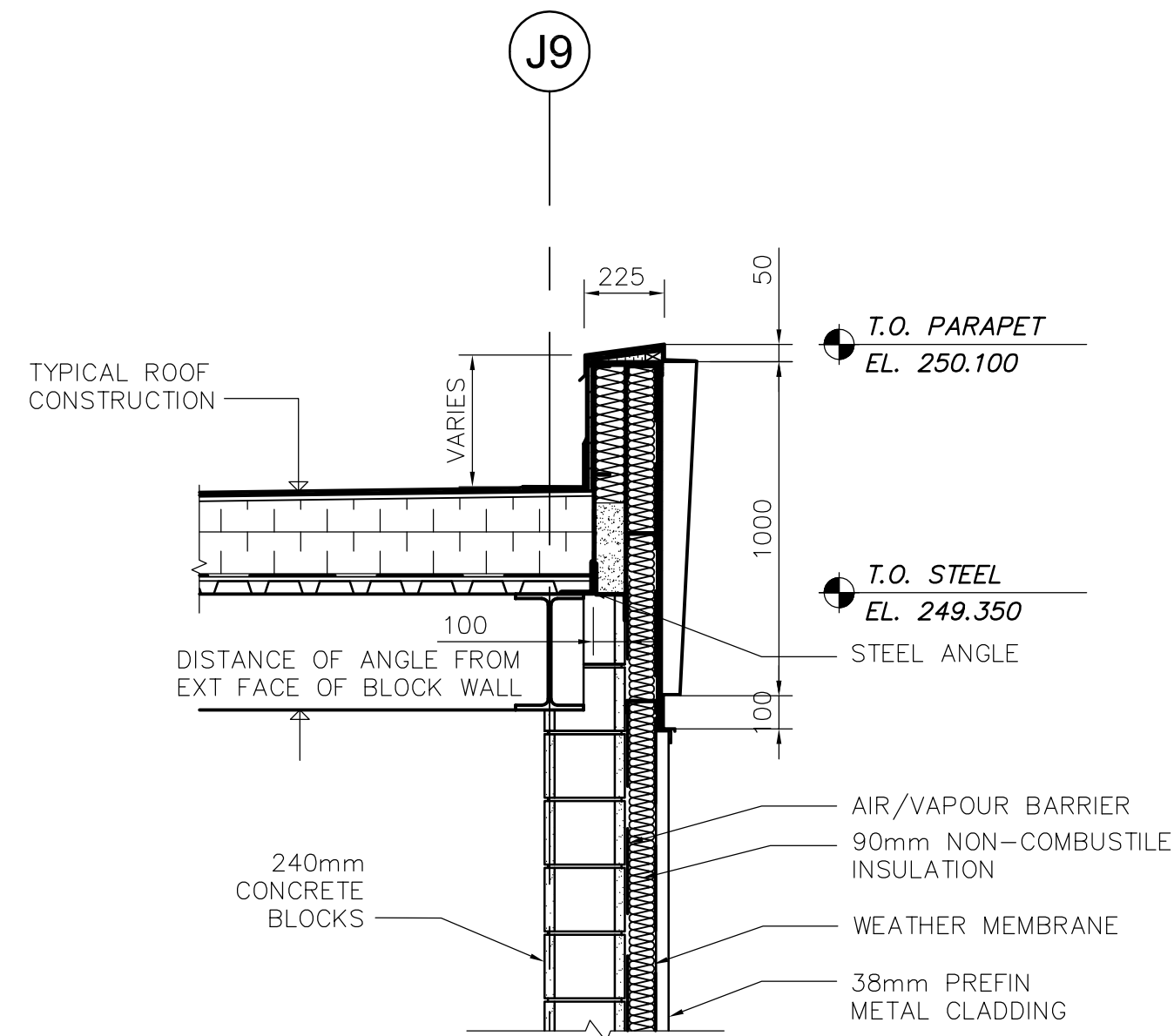
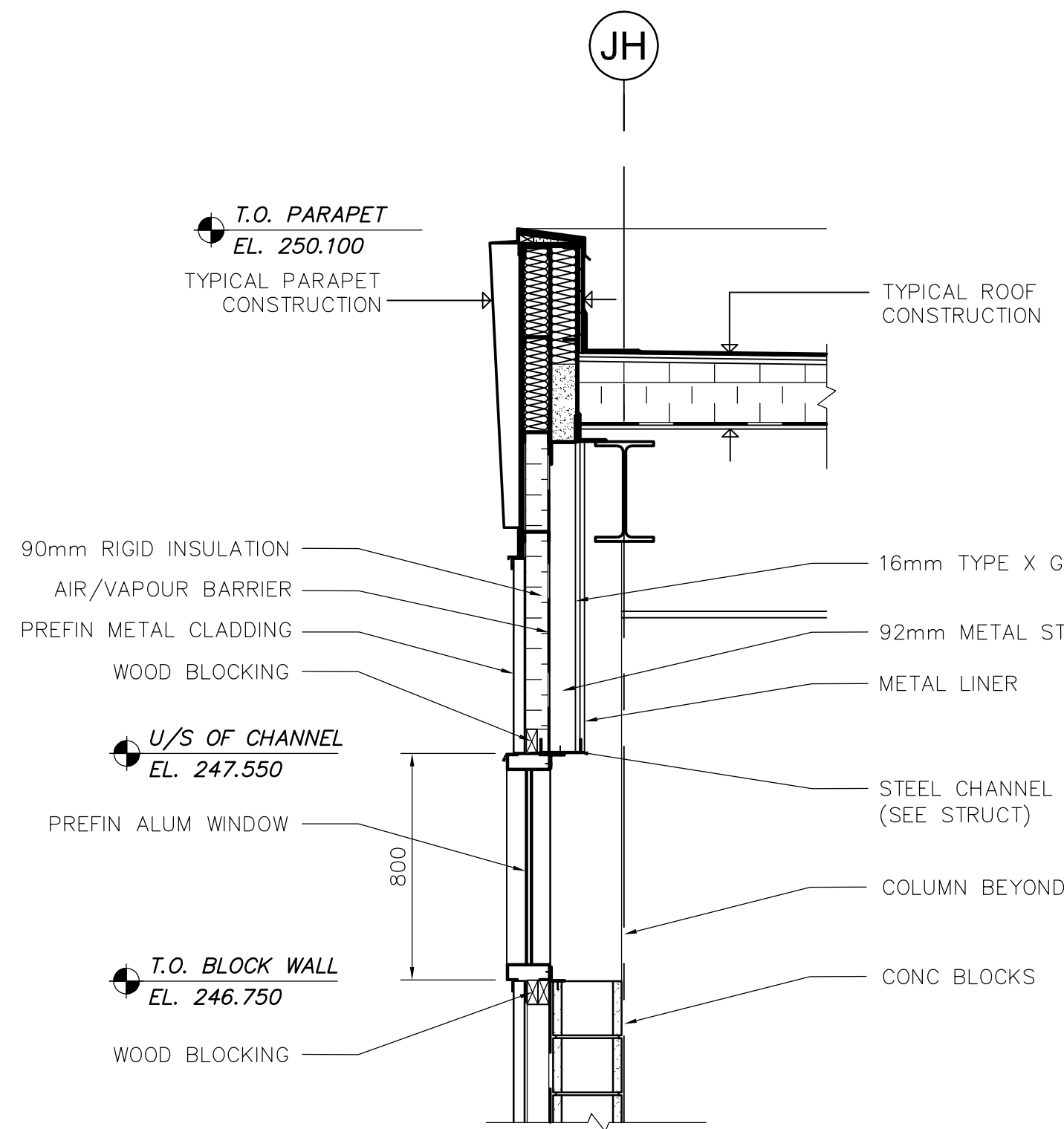


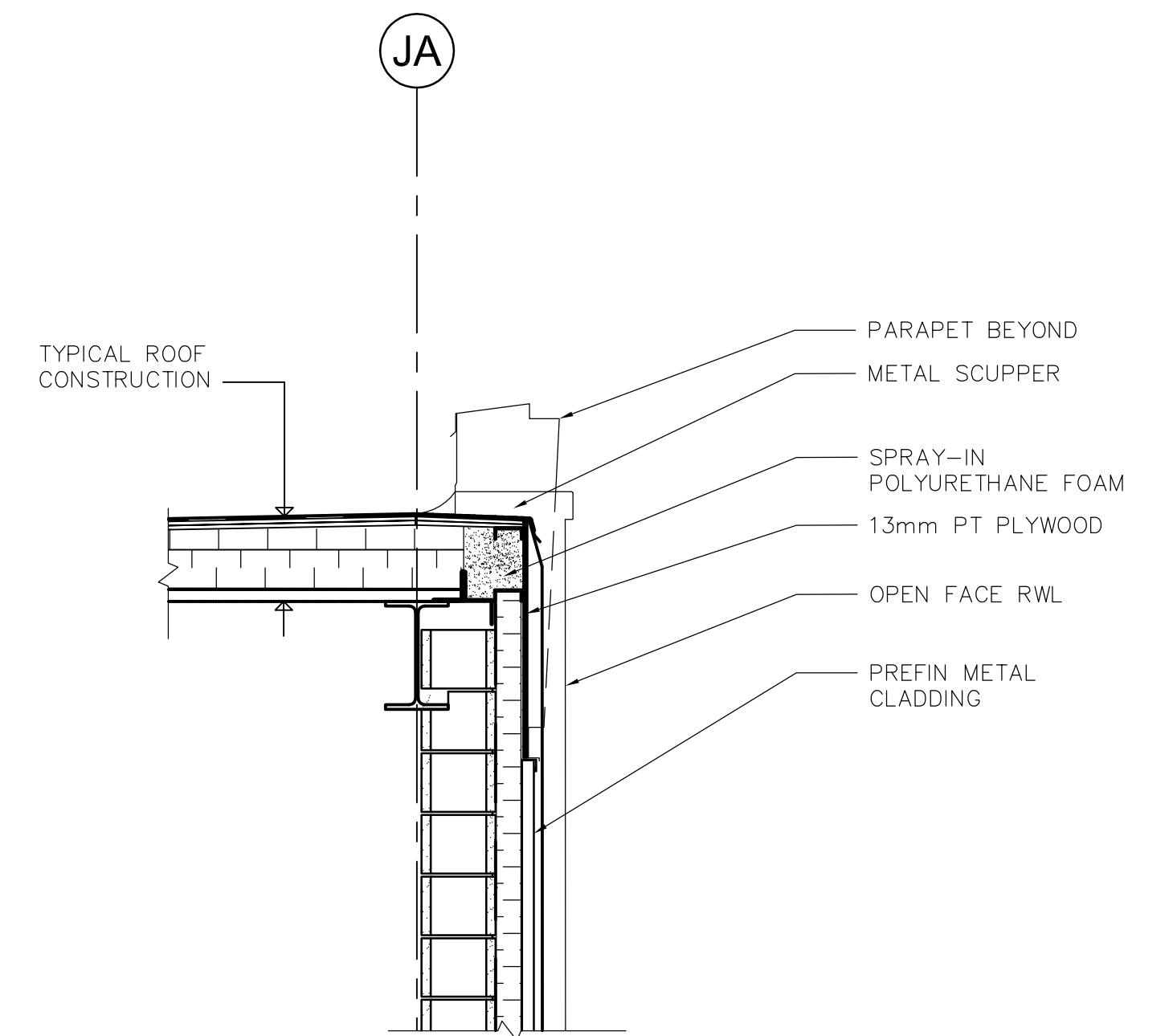
6 TYPICAL PARAPET DETAIL
WJ-B0203 1:20



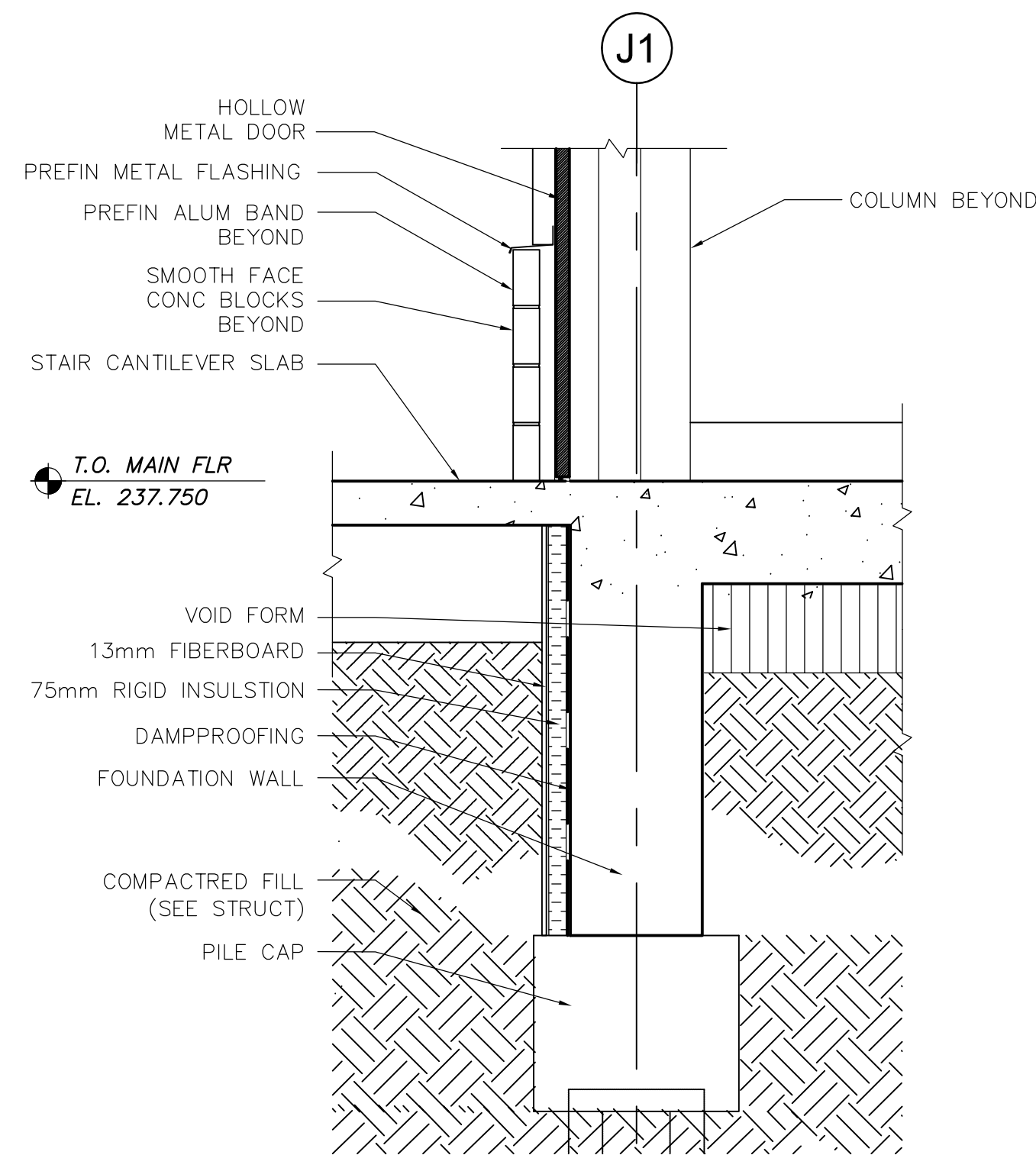
7 PARAPET DETAIL @ FIRE RATED WALL
WJ-B0203 1:20
NOTE: PARAPET DIMENSIONS ARE TYPICAL.



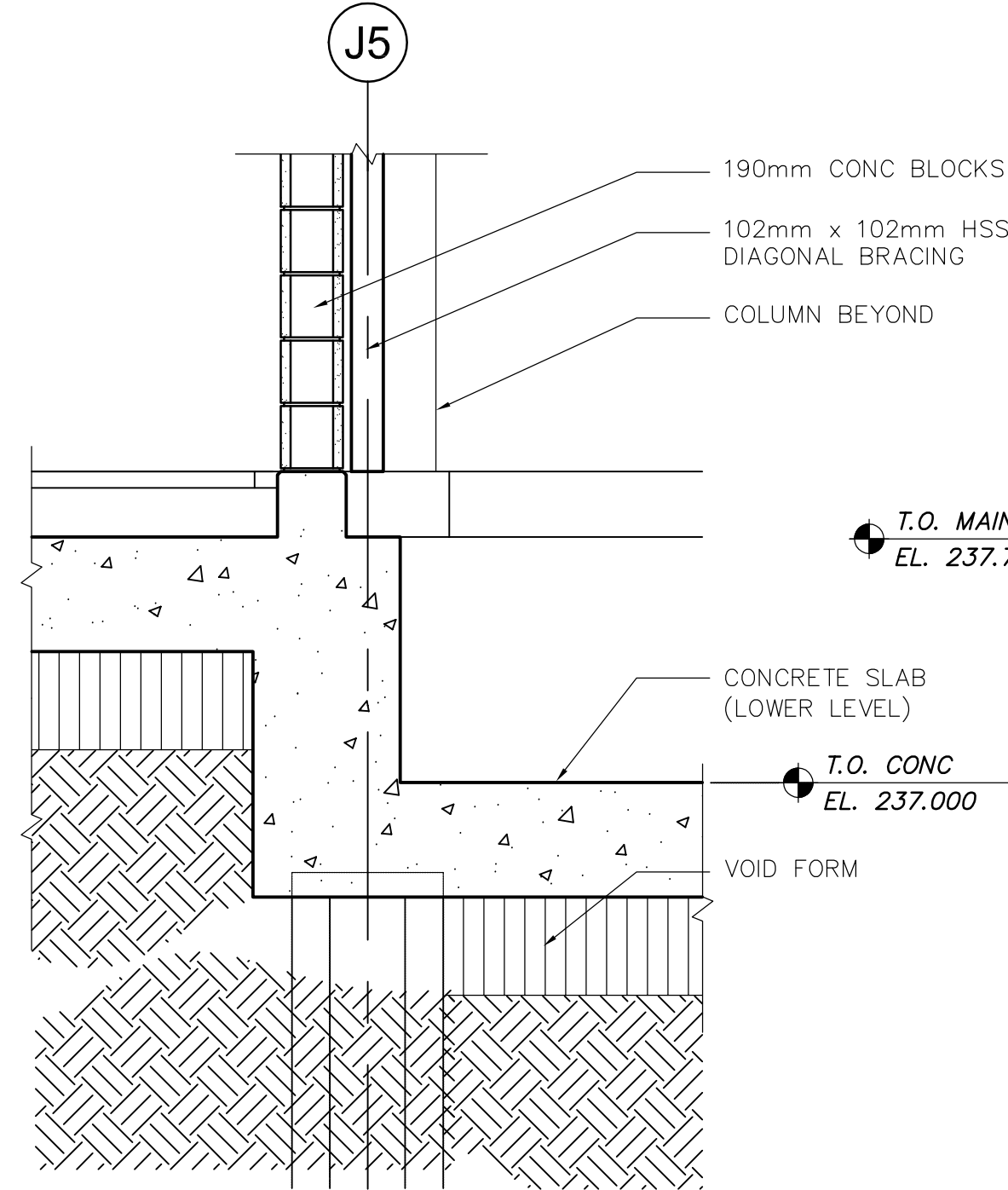
8 STUD WALL AND WINDOW DETAIL
WJ-B0203 1:20



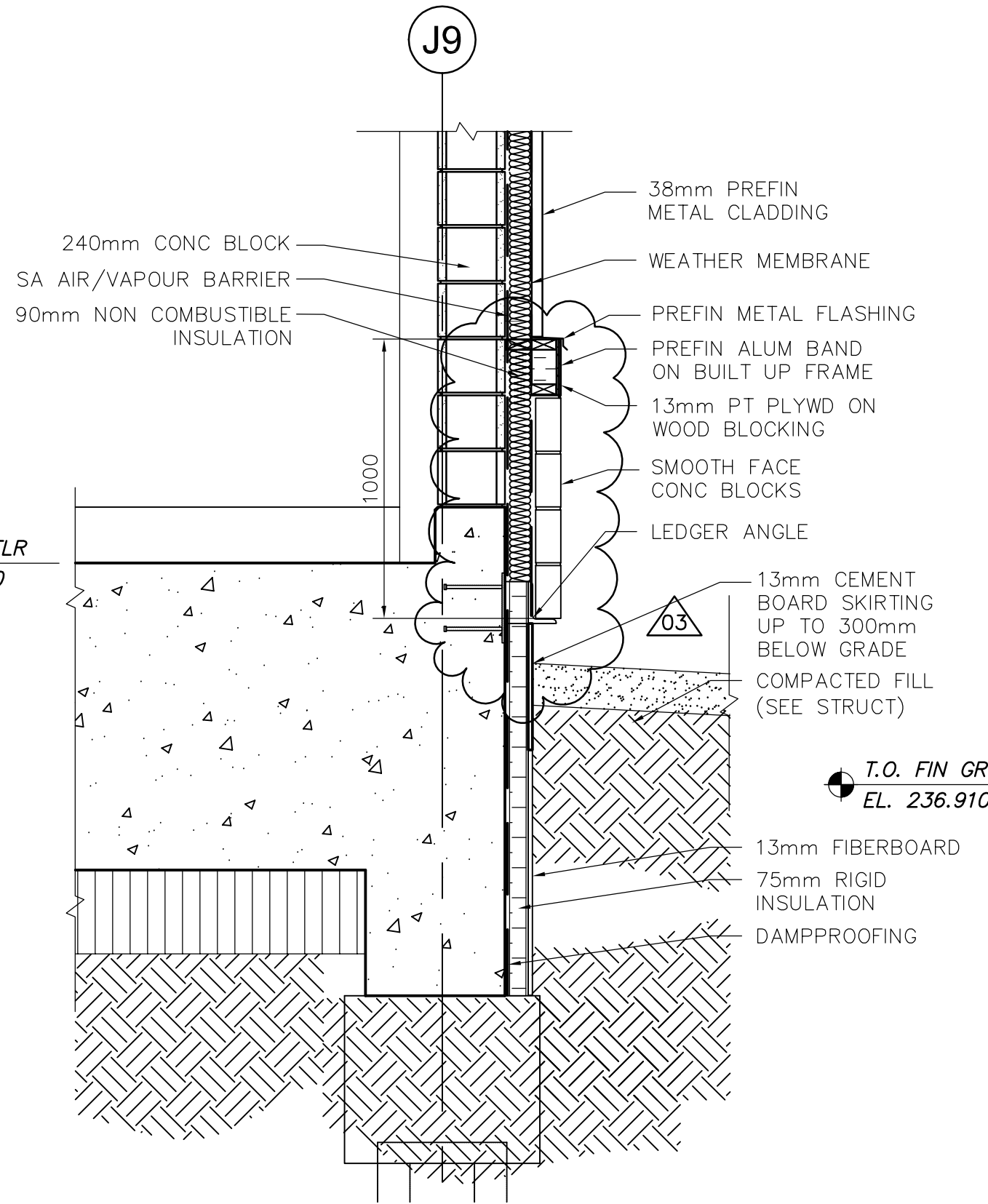
9 TYP SCUPPER DETAIL (OVERFLOW)
WJ-B0203 1:20



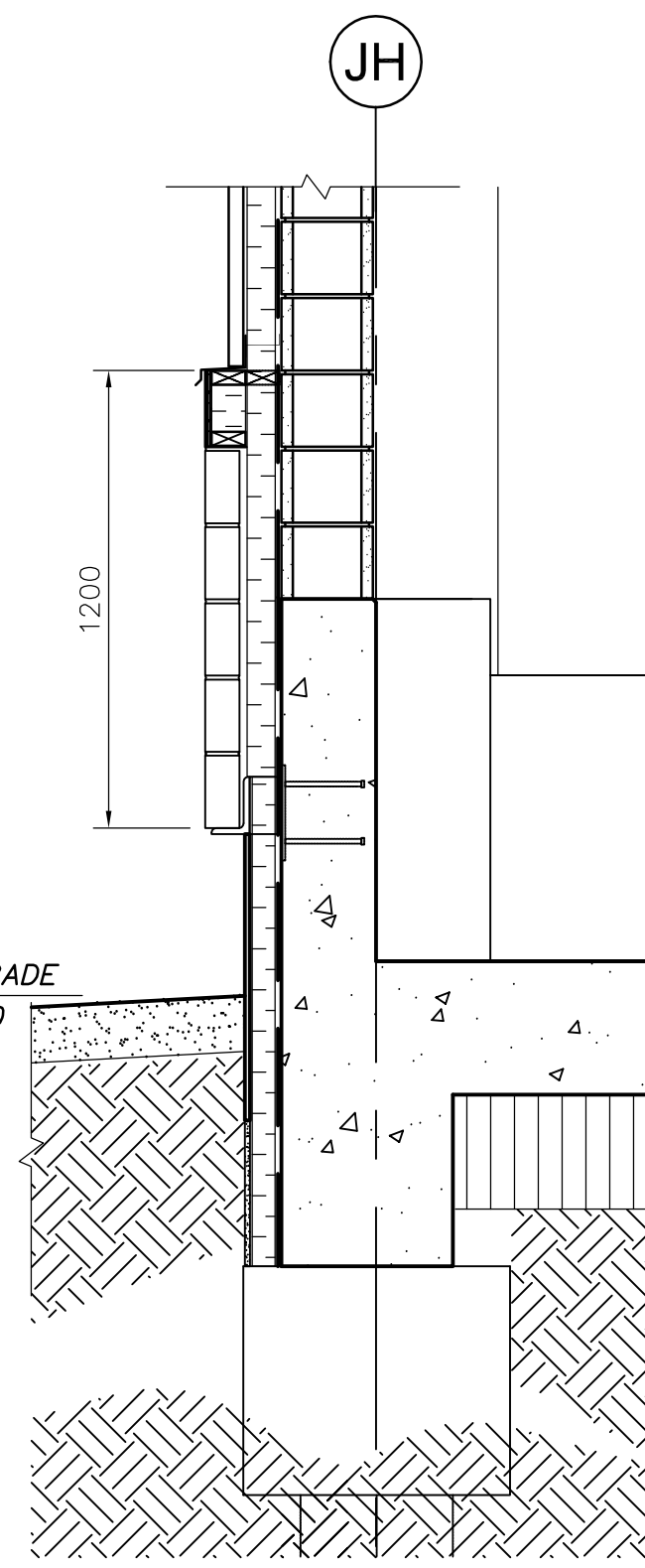
1 DETAIL
WJ-B0203 1:20



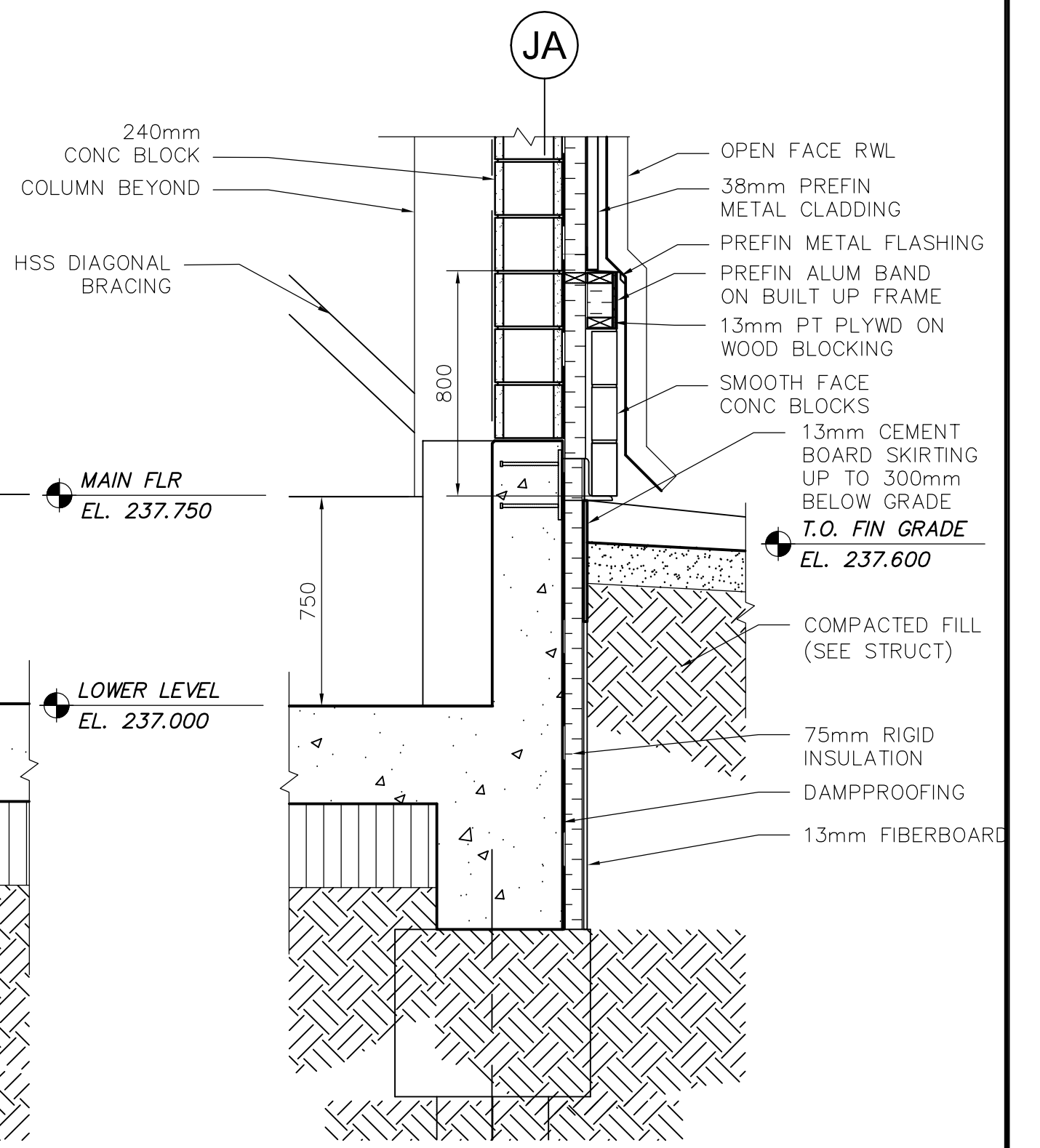
2 DETAIL
WJ-B0203 1:20



3 DETAIL
WJ-B0203 1:20



4 DETAIL
WJ-B0203 1:20



5 DETAIL
WJ-B0203 1:20



NO.	REVISIONS	DATE	BY
03	792-2006 ADDENDUM 5	07/04/11	AL
02	792-2006 ADDENDUM 3	07/03/30	AL
01	792-2006 ADDENDUM 2	07/03/20	AL
00	ISSUED FOR TENDER	07/01/31	AL

DESIGNED BY	NC	CHECKED BY	LK
DRAWN BY	AL	APPROVED BY	AHL
SCALE:	AS SHOWN	RELEASED FOR CONSTRUCTION BY:	R. SOROKOWSKI
DATE	2006/10/02	DATE	2007/01/31

ENGINEER'S SEAL	ORIGINAL SIGNED BY	NEIL COOPER
		2007/01/31
	CONSULTANT DRAWING NO.	WJ-B0401

THE CITY OF WINNIPEG
WATER AND WASTE DEPARTMENT
ENGINEERING DIVISION

WATER TREATMENT PLANT
SODIUM HYPOCHLORITE GENERATION BUILDING
SODIUM HYPOCHLORITE AND CHEMICAL STORAGE BUILDING

CITY FILE NUMBER
SHEET OF
CITY DRAWING NUMBER
1-0601J-A-B0401-001-03D