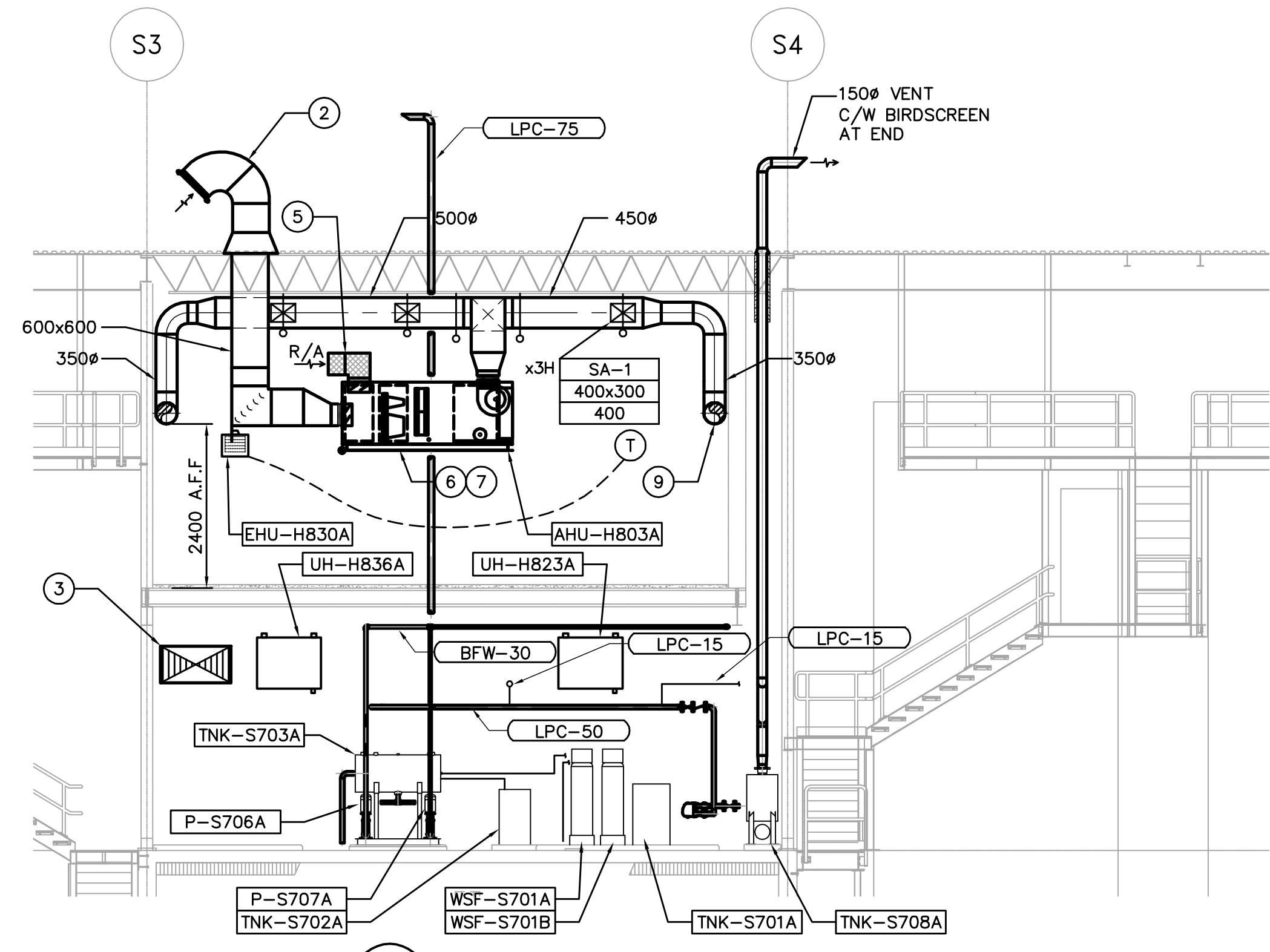


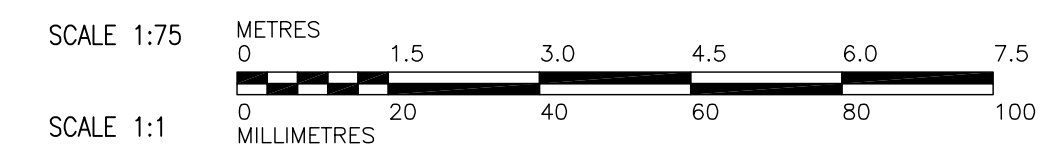
E SECTION
WS-H110 1:75



F SECTION
WS-H110 1:75

- DRAWING NOTES**
- ① 13mm SQUARE WIRE MESH WELDED TO END.
 - ② HEAT TRACING ON BIRDSCREEN.
 - ③ 1150x600 COMBUSTION AIR DUCT. TURN UP TOWARDS CEILING IN MECHANICAL ROOM.
 - ④ 300x300 VENTILATION DUCT (AS PER GAS CODE) FROM MECHANICAL ROOM UP THROUGH SHAFT AND UP THROUGH ROOF. 750x750 EXHAUST GRILLE ON MECHANICAL ROOM WALL. SEE DRAWING WS-H402 TYPICAL GOOSENECK DETAIL 5.
 - ⑤ 13mm SQUARE WIRE MESH WELDED TO END AND 25 ACOUSTIC LINER.
 - ⑥ CONDENSATE DRAIN DOWN TO MECHANICAL ROOM.
 - ⑦ REFRIGERATION LINESET UP TO CONDENSING UNIT ON ROOF.
 - ⑧ SEE DRAWING WS-H0403 EXHAUST FAN DETAIL 6.
 - ⑨ BOTTOM OF DUCT ELEVATION 2400 A.F.F.

- GENERAL NOTES**
1. COORDINATE WITH OTHER TRADES.



<p>Certificate of Authorization Earth Tech Canada Inc. No. 730 Expiry: April 30, 2007</p>	<p>Frederickson Cooper ARCHITECTS</p>		<p>A Tyco International Ltd. Company</p>		ENGINEER'S SEAL ORIGINAL SIGNED BY A. M. AFTANAS 2007/01/31
	DESIGNED BY	LJW	CHECKED BY	PVL/AMA	CONSULTANT DRAWING NO. WS-H0204
	DRAWN BY	LJW	APPROVED BY	AHL	
	SCALE:	1:75	RELEASED FOR CONSTRUCTION BY:	R. SOROKOWSKI	
00 ISSUED FOR TENDER	07/01/31	DATE	2006/09/12	DATE	2007/01/31

<p>THE CITY OF WINNIPEG WATER AND WASTE DEPARTMENT ENGINEERING DIVISION</p>		CITY FILE NUMBER
WATER TREATMENT PLANT BULK CHEMICAL STORAGE SODIUM HYPOCHLORITE AND CHEMICAL STORAGE BUILDING		SHEET OF
MECHANICAL SECTIONS E & F		CITY DRAWING NUMBER
		1-0601S-A-H0204-001-000