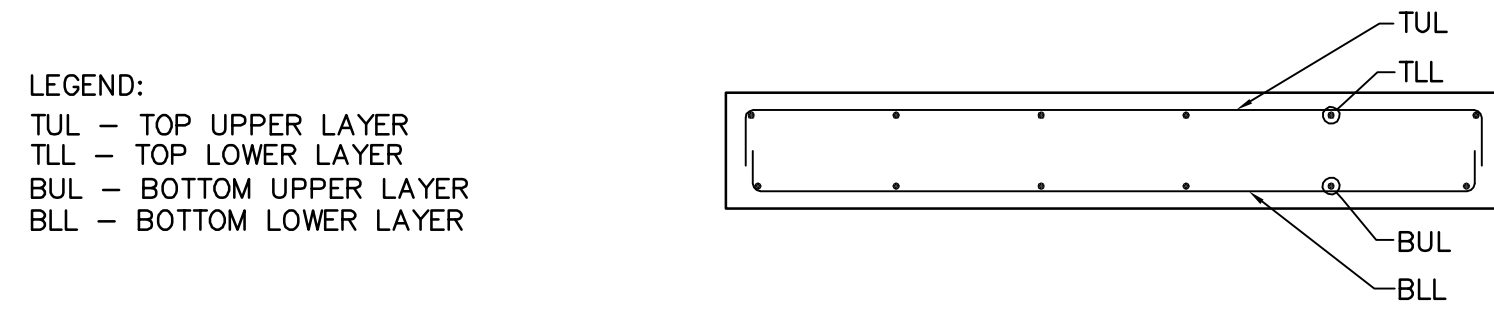


MARK	DEPTH	REINFORCING			REMARKS
		TOP	BOTTOM	ADDITIONAL	
SL-1	150	-	15M @ 300 E.W.	15M PERIMETER DOWELS @ 300 E.W.	SLAB-ON-GRADE. REINF. @ SLAB MID-DEPTH
SL-2	200	10M @ 300 TUL 10M @ 300 TLL	10M @ 300 BUL 10M @ 300 BLL	-	
SL-3	200	15M @ 300 TUL 15M @ 300 TLL	15M @ 300 BUL 15M @ 300 BLL	2-20M @ 100 BOTT EACH SIDE OF BEAM	SEE PLAN FOR ADDITIONAL TOP REINFORCING
SL-4	400	15M @ 150 E.W.	15M @ 150 E.W.	2-20M @ 100 BOTT EACH SIDE OF BEAM	SEE PLAN FOR ADDITIONAL TOP REINFORCING



MARK	WIDTH	DEPTH	REINFORCING				ADDITIONAL	REMARKS
			TOP	MIDDLE	BOTTOM	STIRRUPS		
CB-1	350	600	3-20M	-	3-20M	10M @ 300		
CB-2	300	750	3-25M	-	3-25M	15M @ 200	290Wx200H CONC. UPSTAND r/w 2-15M TOP AND 10M @ 300 o/c	
CB-3	300	750	3-25M	-	3-25M	15M @ 200		EXTEND TOP BARS 1000 INTO SLAB BEYOND AT EACH BEAM END.
CB-4	300	750	3-25M	-	5-25M	15M @ 200	290Wx200H CONC. UPSTAND r/w 2-15M TOP AND 10M @ 300 o/c	
CB-5	350	900	3-20M	3-15M E.F.	3-20M	10M @ 300	190Wx200H CONC. UPSTAND r/w 2-15M TOP AND 10M @ 300 o/c	
CB-6	300	1600	2-20M	15M @ 200 E.F.	2-20M	15M @ 300	190Wx200H CONC. UPSTAND r/w 2-15M TOP AND 10M @ 300 o/c	
CB-7	400	1600	3-20M	15M @ 200 E.F.	3-20M	15M @ 300	190Wx200H CONC. UPSTAND r/w 2-15M TOP AND 10M @ 300 o/c	
CB-8	400	1600	3-20M	15M @ 200 E.F.	3-20M	15M @ 300	190Wx200H CONC. UPSTAND r/w 2-15M TOP AND 10M @ 300 o/c	
CB-9	400	1600	3-25M	15M @ 200 E.F.	3-25M	15M @ 300	400Wx125H CONC. UPSTAND. r/w 3-15M TOP, AND 10M @ 300 o/c	
CB-10	350	900	3-20M	3-15M E.F.	3-20M	10M @ 300	350Wx425H CONC. UPSTAND. r/w 2-20M TOP, 1-15M MID. E.F. AND 10M @ 300 o/c	

MARK	SIZE	MATERIALS	REMARKS
L-1	190 CMU		SEE STANDARD DETAILS WS-S0404
L-2	190 CMU		SEE STANDARD DETAILS WS-S0404

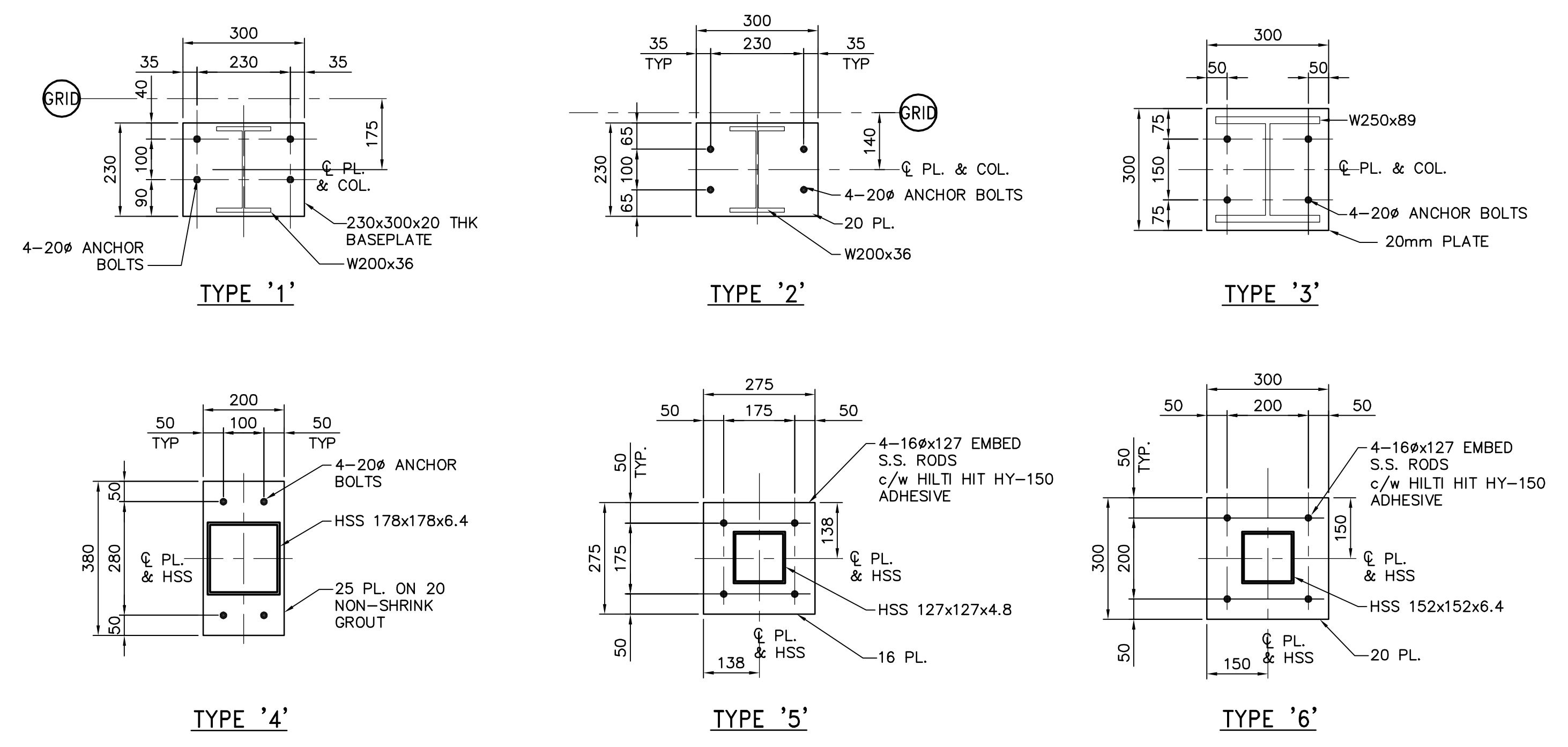
MARK	DEPTH	FINISH	REMARKS
J-1	650	PAINTED SEE SPEC.	EQUALLY SPACED UNLESS OTHERWISE NOTED
J-2	600	PAINTED SEE SPEC.	EQUALLY SPACED UNLESS OTHERWISE NOTED
J-3	450	PAINTED SEE SPEC.	EQUALLY SPACED UNLESS OTHERWISE NOTED
J-4	550	PAINTED SEE SPEC.	EQUALLY SPACED UNLESS OTHERWISE NOTED

MARK	SIZE	BASE PLATE TYPE	U/S BASE PLATE EL.	FINISH	REMARKS
SC-1	W200x36	TYPE '1'	SEE PLAN/DETAIL	PAINTED	
SC-2	W200x36	TYPE '2'	SEE PLAN/DETAIL	PAINTED	
SC-3	W250x89	TYPE '3'	SEE PLAN/DETAIL	PAINTED	
SC-4	HSS 178x178x6.4	TYPE '4'	SEE PLAN/DETAIL	PAINTED	
SC-5	HSS 127x127x4.8	TYPE '5'	SEE PLAN/DETAIL	PAINTED	
SC-6	HSS 152x152x6.4	TYPE '6'	SEE PLAN/DETAIL	PAINTED	

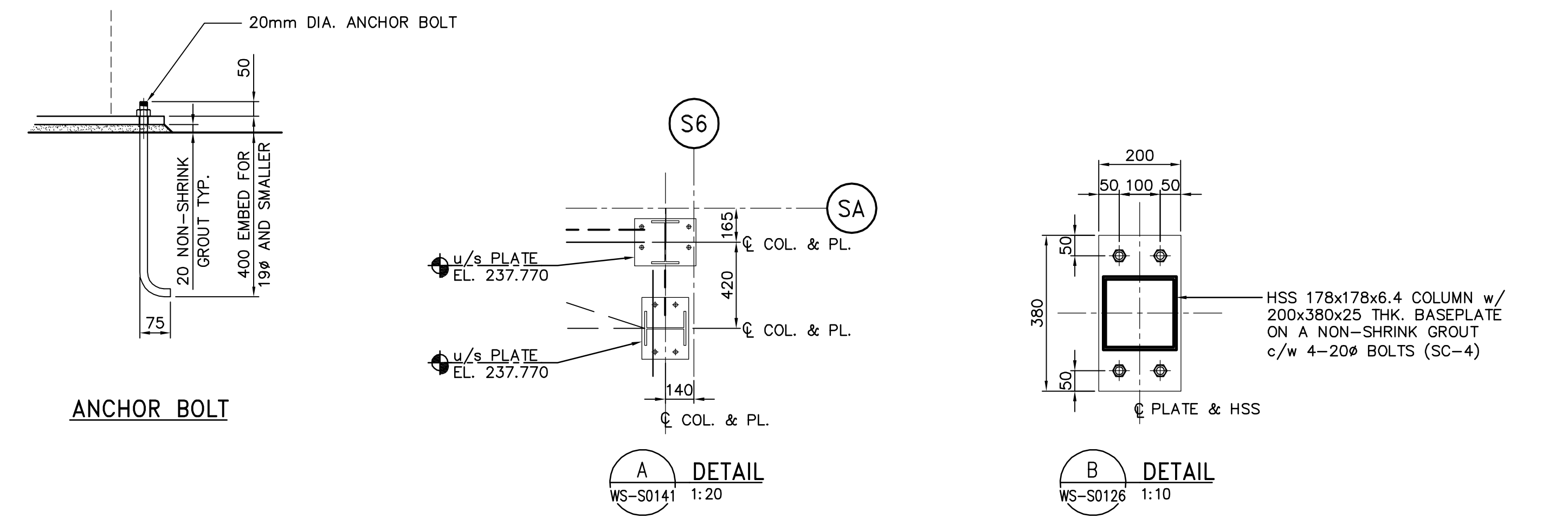
MARK	SIZE	MATERIAL	REMARKS
190 CMU	190	SEE ARCH. PLAN	FOR EACH WALL PANEL, GROUT END CORES AND PROVIDE BOND BEAMS AT EVERY 12TH COURSE. USE 15M FOR 190 CMU AND 20M FOR 290 CMU.
290 CMU	290		



TYPICAL BASE PLATE DETAILS



- BASEPLATE NOTES:
 1. U/S OF BASEPLATE AT TYPICAL UNLESS NOTED ELEV. 237.770
 2. U/S OF BASEPLATE AT UPSTAND IS ELEV. 237.970
 3. U/S OF BASEPLATE AT CONTAINMENT PIT (LOWER LEVEL) ELEV. 236.570
 4. U/S OF BASEPLATE AT CONTAINMENT PIT (LOWER LEVEL AQUA AMMONIA) ELEV. 236.970



B.M. ELEV.	 Frederickson Cooper ARCHITECTS	 A Tech International Ltd. Company	ENGINEER'S SEAL	 THE CITY OF WINNIPEG WATER AND WASTE DEPARTMENT ENGINEERING DIVISION	CITY FILE NUMBER
			ORIGINAL SIGNED BY A. POCHANART 2007/01/31		SHEET OF
DESIGNED BY: ARA	CHECKED BY: AP	SCALE: AS NOTED	RELEASED FOR CONSTRUCTION BY: R. SOROKOWSKI	WATER TREATMENT PLANT BULK CHEMICAL BUILDING SODIUM HYPOCHLORITE AND CHEMICAL STORAGE BUILDING	CITY DRAWING NUMBER
DRAWN BY: CMF	APPROVED BY: AHL			STRUCTURAL SCHEDULES	1-06018-A-50501-001-00D
ISSUED FOR TENDER: 07/01/31 WDB	DATE: 2006/08/30	DATE: 2007/01/31	DATE: 2007/01/31	CONSULTANT DRAWING NO. WS-S0501	