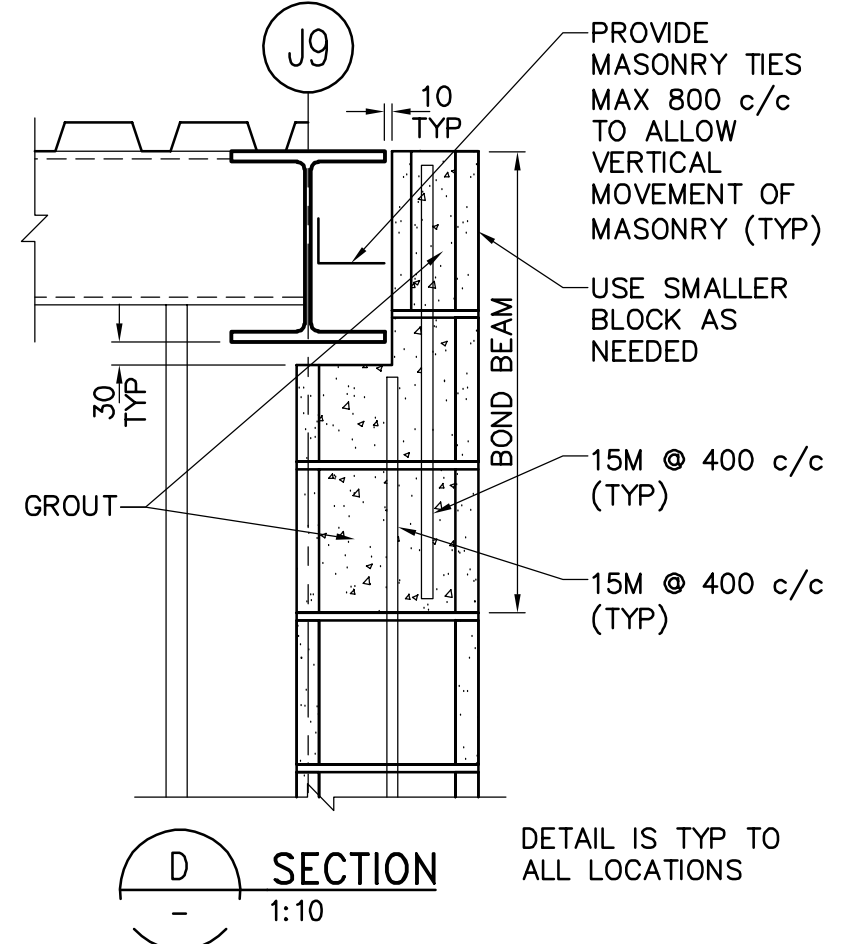
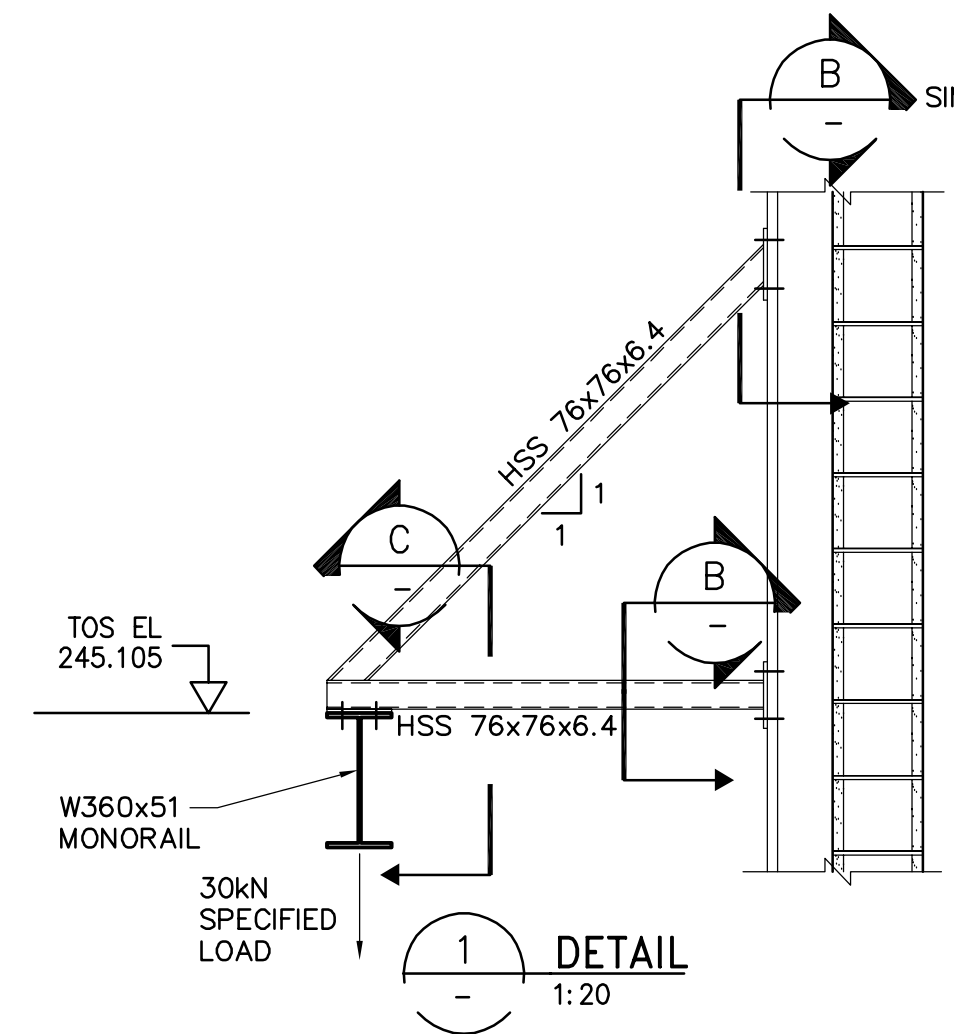


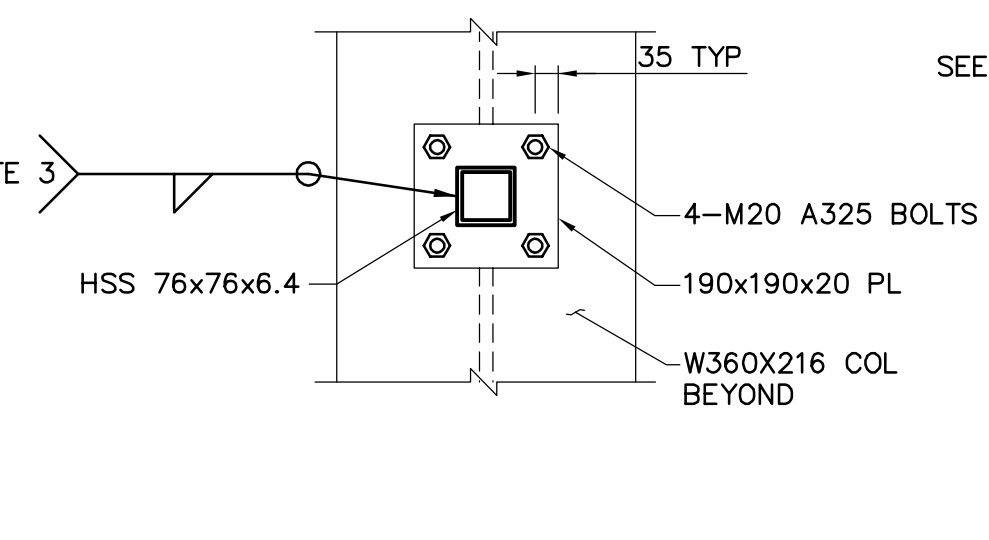
**A SECTION**  
 WJ-F0105 1:50  
 WJ-S0101  
 WJ-S0111  
 WJ-S0121  
 (REVISED FOR IFT FEB. 22/07 DK)



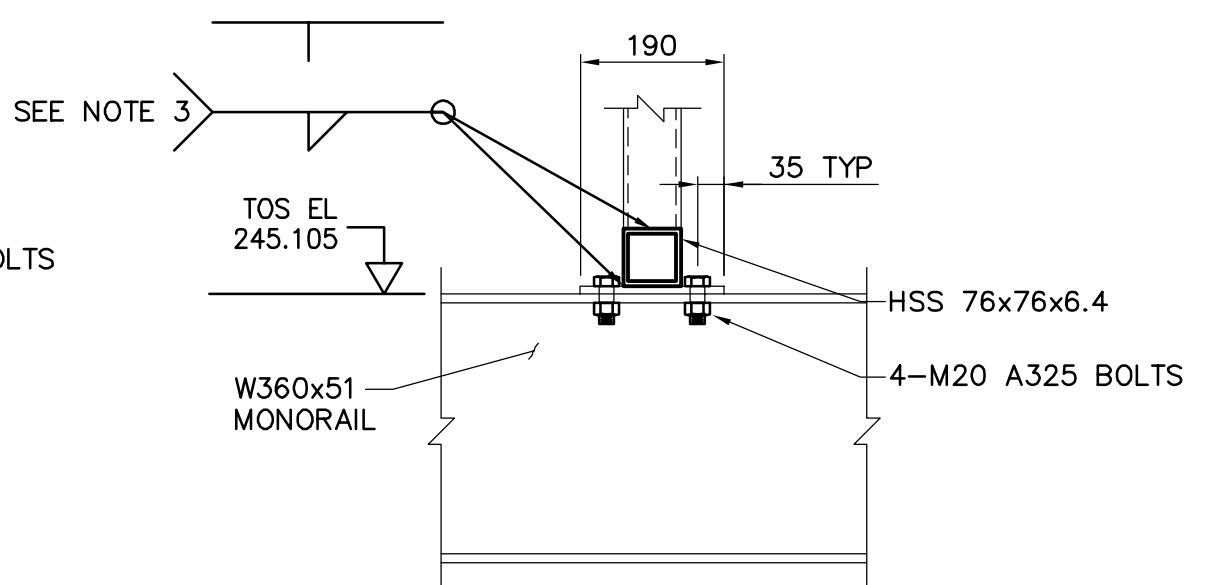
- NOTE:**
- SEE PLANS WJ-S0101 AND WJ-S0111 FOR REBAR SIZE AND SPACING.
  - FOR GENERAL NOTES SEE DWG WS-S0001. IN CASE OF CONFLICTING INFORMATION, WJ-SERIES DRAWINGS GOVERN.
  - FOR HSS CONNECTIONS SEE CISC HANDBOOK, 2004 ED., TABLE 3-46.
  - COORDINATE OPENING LOCATION AND WIDTH WITH MECHANICAL SUBCONTRACTOR (TYP).
  - FOR PARAPET DETAILS REFER TO ARCHITECTURAL DRAWINGS.



**B SECTION**  
 1:10



**C SECTION**  
 1:10



<p><b>APEGN</b>                  Certificate of Authorization                  CH2M HILL Canada Ltd.                  No. 1441 Expiry: April 30, 2007</p>	B.M. ELEV.	<p>Frederickson Cooper                  ARCHITECTS</p>	<p>EarthTech                  A 100 International Ltd. Company</p>	ENGINEER'S SEAL ORIGINAL SIGNED BY D. KRUGER 2007/01/31	<p><b>THE CITY OF WINNIPEG</b>                  WATER AND WASTE DEPARTMENT                  ENGINEERING DIVISION</p> <p>WATER TREATMENT PLANT                  SODIUM HYPOCHLORITE BUILDING                  SODIUM HYPOCHLORITE AND CHEMICAL STORAGE BUILDINGS</p> <p>STRUCTURAL                  SODIUM HYPOCHLORITE BUILDING                  SECTIONS AND DETAILS</p>
	DESIGNED BY MH DRAWN BY CR SCALE: AS NOTED	CHECKED BY AP APPROVED BY AHL RELEASED FOR CONSTRUCTION BY: R. SOROKOWSKI	CITY FILE NUMBER SHEET OF CITY DRAWING NUMBER 1-0601J-A-S0201-001-000		
	00 ISSUED FOR TENDER 07/01/31 MH NO. REVISIONS DATE BY	DATE 2006/08/14 DATE 2007/01/31	CONSULTANT DRAWING NO. WJ-S0201		
	Last Save: 2007-02-22 5:15 PM	C:\DOCUMENTS AND SETTINGS\SEVERITT\MY DOCUMENTS\NDMPROJ\321352 - WINNIPEGWTP\DN_WJ-S0201_CH2M.DWG	C:\DOCUMENTS AND SETTINGS\SEVERITT\MY DOCUMENTS\NDMPROJ\321352 - WINNIPEGWTP\DN_WJ-S0201_CH2M.DWG		