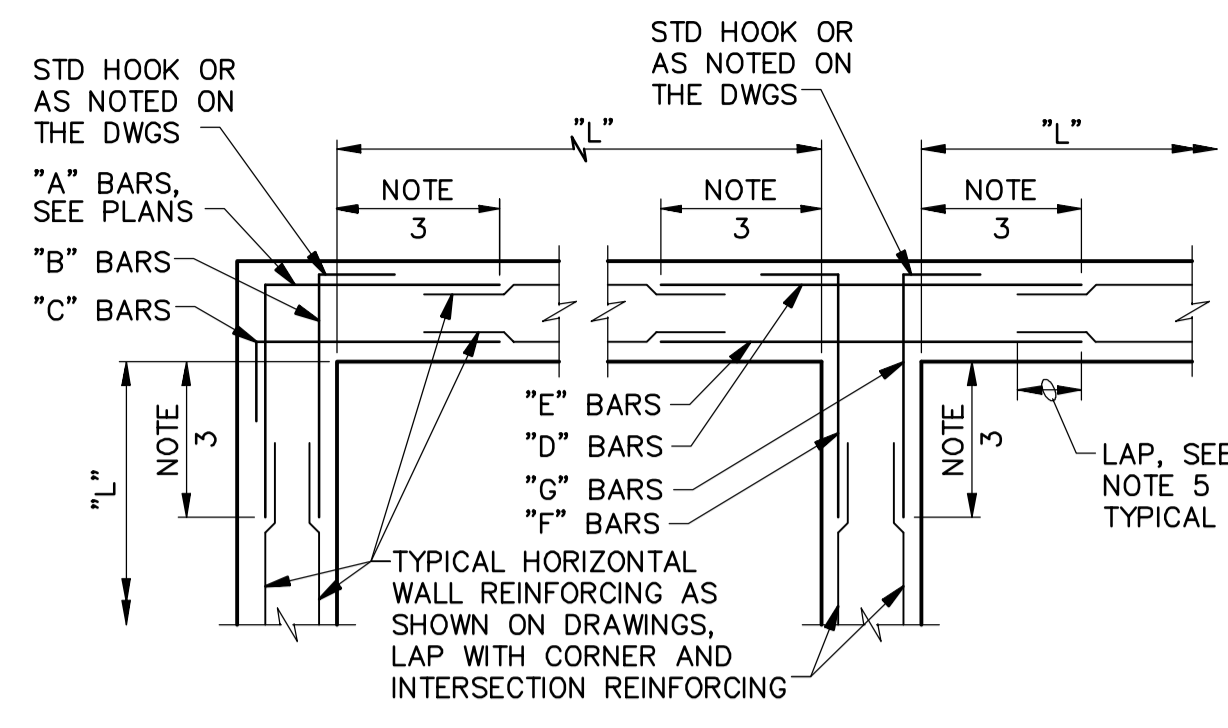


SINGLE REINFORCING MAT

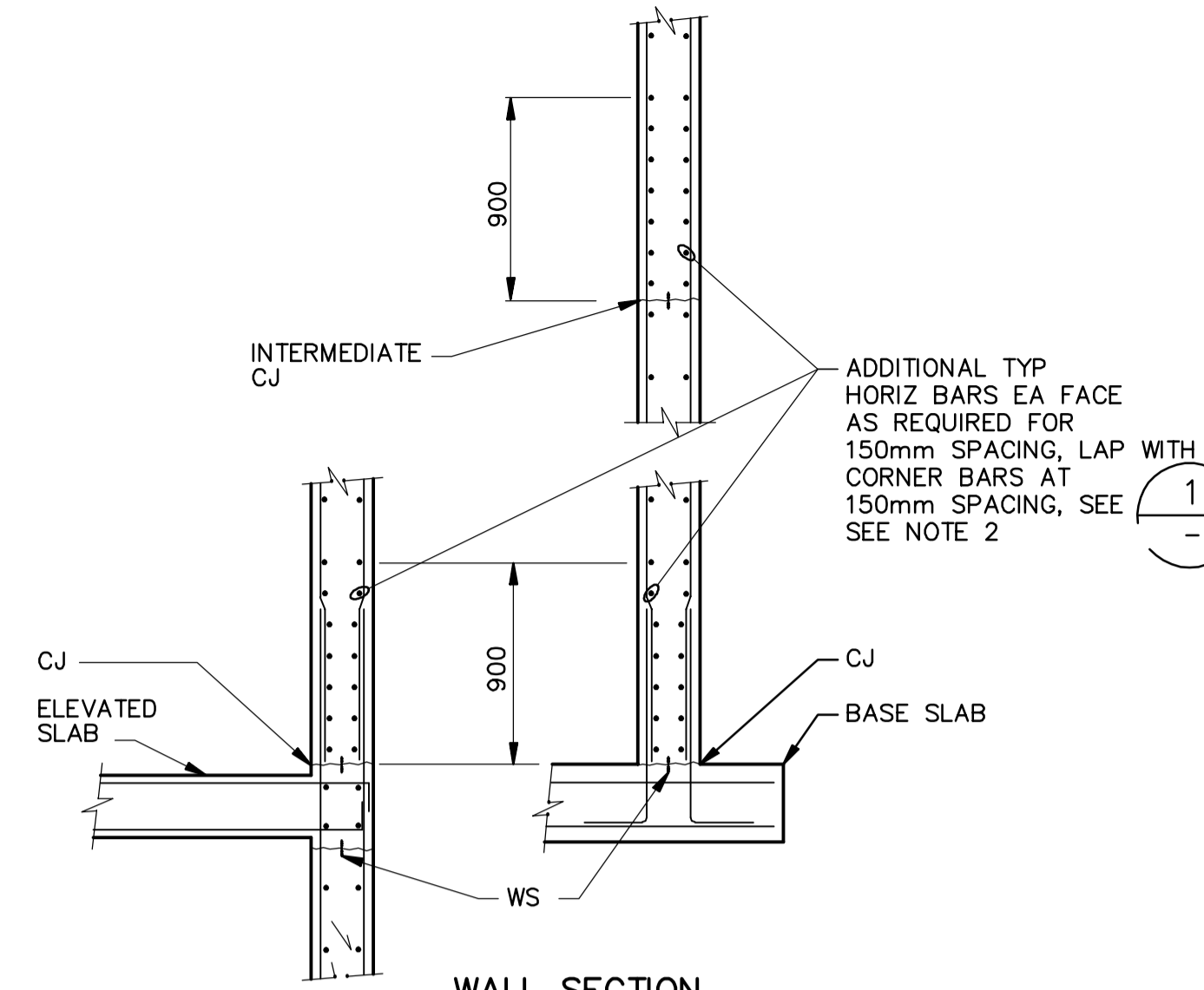


DOUBLE REINFORCING MAT

NOTES:

1. TYPICAL HORIZONTAL WALL CORNER AND INTERSECTION REINFORCING LAYOUT IS SHOWN TO AVOID CONGESTION AND PERMIT PROPER PLACEMENT, FOR SIZE AND SPACING SEE PLANS. ALL HORIZONTAL REINFORCING AT CORNERS AND INTERSECTIONS SHALL BE FABRICATED AND INSTALLED WITH SPLICES LOCATED WHERE SHOWN REGARDLESS OF BAR SIZE AND SPACING.
2. WHERE THE CORNER OR INTERSECTION REINFORCING SIZE AND SPACING IS NOT SHOWN, NOTED OR TABULATED ON THE PLANS, THE SIZE AND SPACING SHALL BE THE SAME AS THE WALL HORIZONTAL REINFORCING SHOWN ON THE WALL SECTIONS OR AS NOTED FOR THE REINFORCING BETWEEN THE CORNERS OR INTERSECTIONS.
3. EXCEPT WHERE OTHERWISE SHOWN ON THE DRAWINGS, THE LENGTH INDICATED AS "NOTE 3" SHALL BE THE LESSER OF L/4, 3000mm, OR 1.0 TIMES THE HEIGHT OF THE WALL, EXCEPT THAT IN NO CASE SHALL IT BE LESS THAN 600mm.
4. L = LENGTH OF WALL PARALLEL TO THE BAR LENGTH IN QUESTION.
5. EXCEPT WHERE OTHERWISE SHOWN ON THE DRAWINGS, THE LENGTH INDICATED AS "NOTE 5" SHALL BE EQUAL TO ONE "LAP LENGTH" AS REQUIRED BY THE GENERAL STRUCTURAL NOTES. USE THE LAP LENGTH AS REQUIRED FOR THE SMALLER OF THE TWO REINFORCING BARS BEING SPLICED.
6. UNLESS OTHERWISE NOTED, "B" AND "C" BARS ARE THE SAME SIZE AND SPACING AND, "F" AND "G" BARS ARE THE SAME SIZE AND SPACING.

1 TYPICAL WALL CORNER AND INTERSECTION REINFORCING
N.T.S.

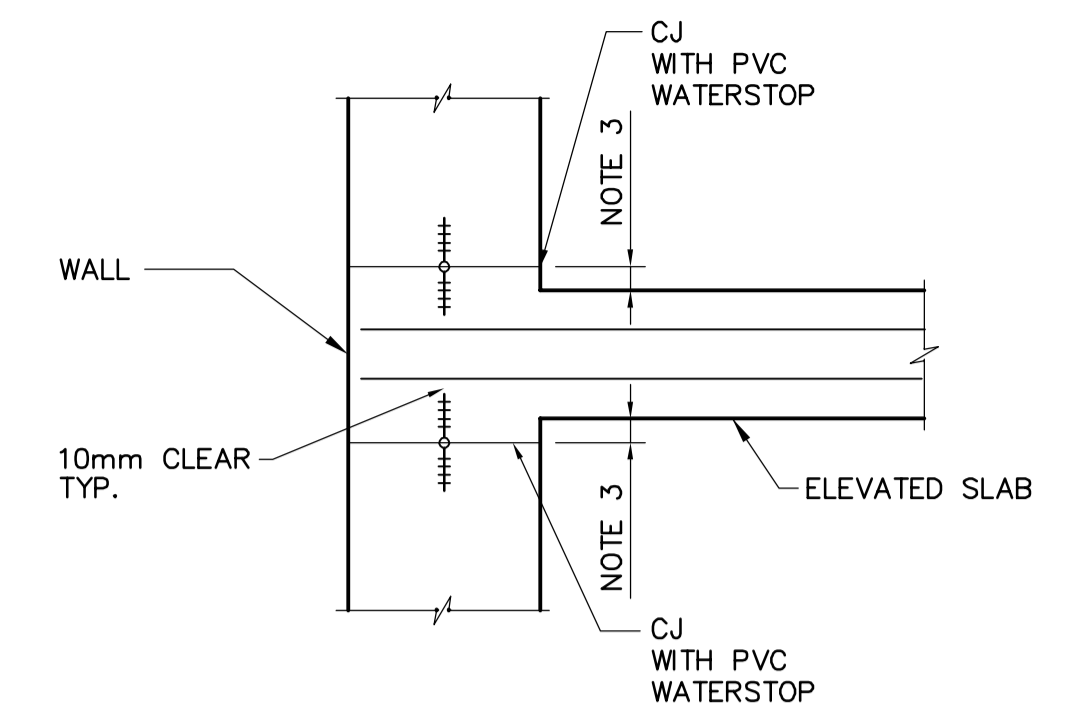


WALL SECTION

NOTES:

1. PROVIDE ADDITIONAL HORIZONTAL BARS AS SHOWN IN THE FIRST 900mm ABOVE ALL HORIZONTAL WALL CJS IN HYDRAULIC AND BELOW-GRADE STRUCTURES.
2. PROVIDE ADDITIONAL HORIZONTAL CORNER BARS EA. FACE AS REQUIRED FOR 150mm SPACING TO LAP WITH THE ADDITIONAL TYPICAL HORIZONTAL BARS SHOWN.

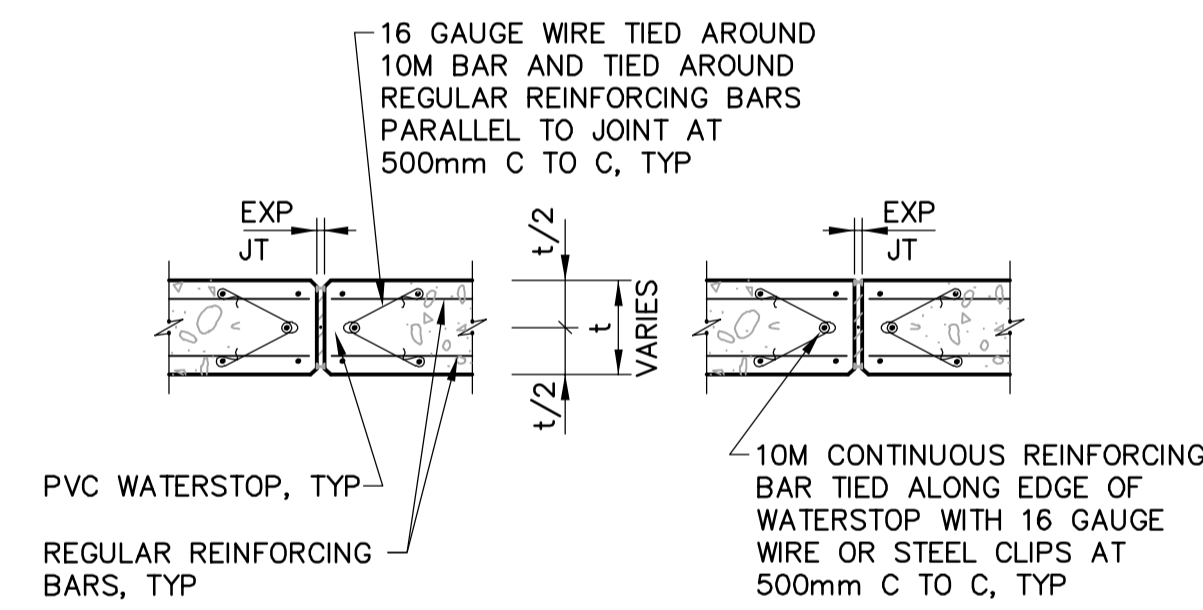
2 ADDITIONAL REINFORCING AT HORIZ CONSTRUCTION JOINT
N.T.S.



NOTES:

1. FOR SLAB CONCRETE COVER, SEE **4**.
2. FOR SIZE OF WATERSTOP SEE **7**.
3. PROVIDE HEIGHT SUCH THAT 10mm CLEARANCE IS MAINTAINED BETWEEN REBAR AND EDGE OF WATERSTOPS, TYPICAL.
4. DETAIL APPLICABLE FOR CONTAINMENT AND BELOW GRADE STRUCTURES.

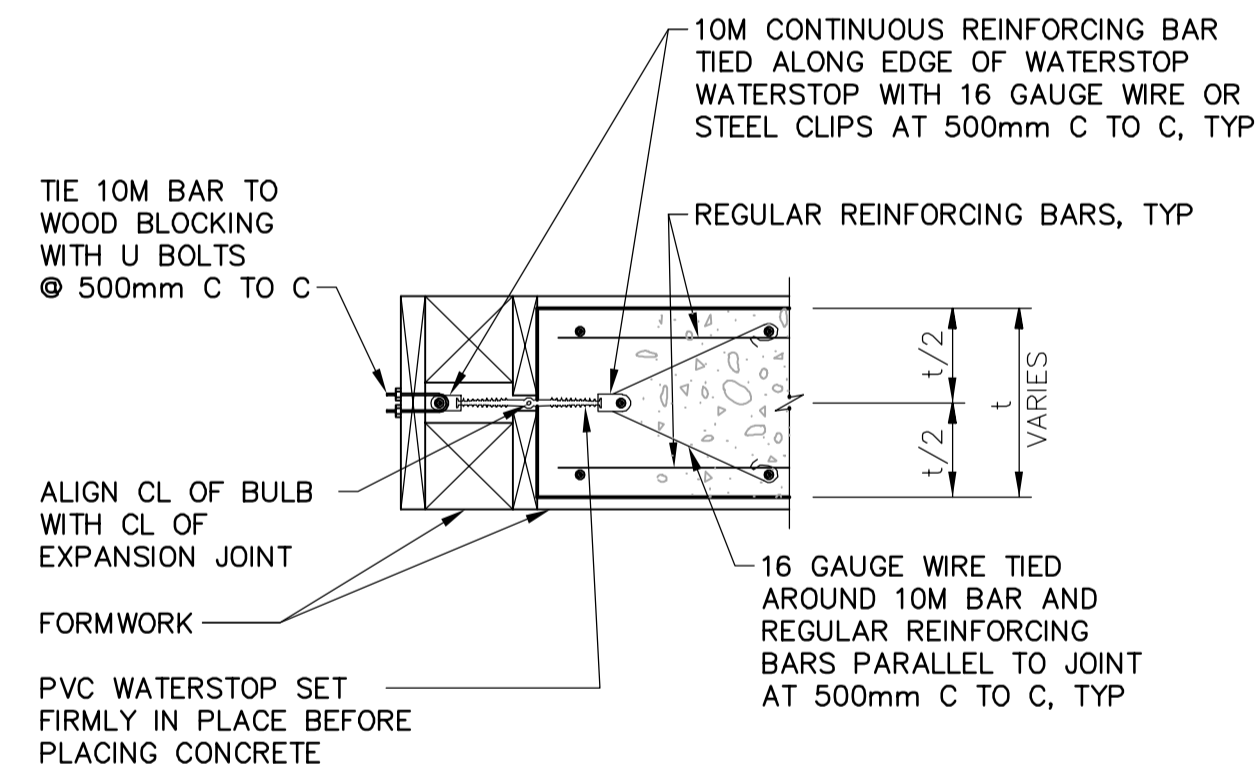
3 WALL CONSTRUCTION JOINT AT ELEVATED SLAB
N.T.S.
(REVISED FOR IFT FEB. 22/07 DK)



WALL SECTION

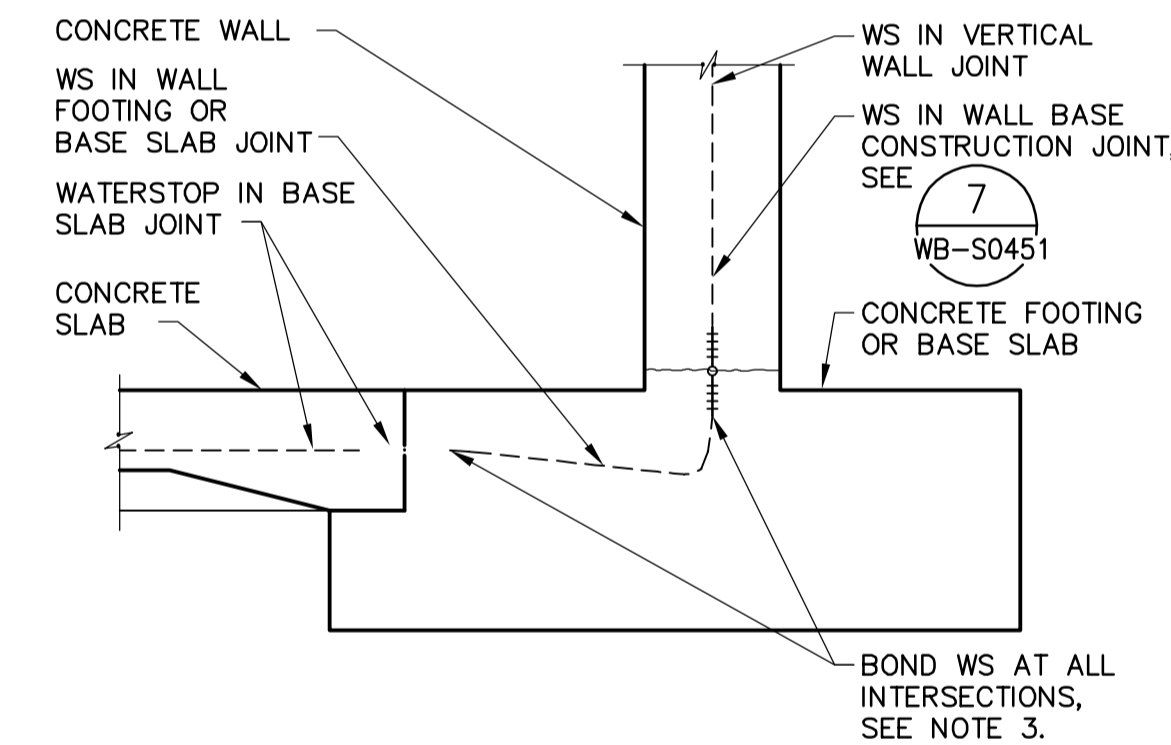
SLAB SECTION

4 WATERSTOP ANCHORAGE WITH REINFORCING IN BOTH FACES
N.T.S.



PLAN - WALLS
SECTION - SLABS (SIM. - NO FORMWORK)

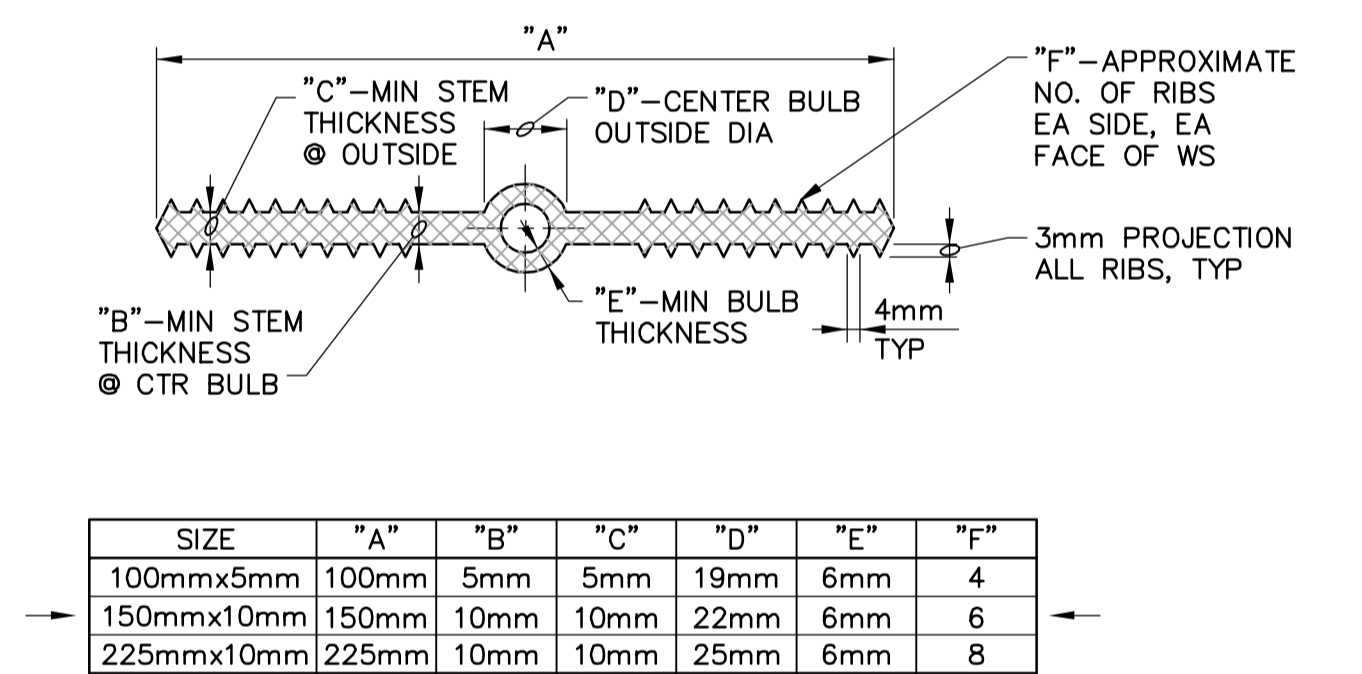
5 WATERSTOP ANCHORAGE FOR FIRST PLACEMENT
N.T.S.



NOTES:

1. SUBMIT DETAILS OF SPLICING AND LOCATION.
2. BOND OR SPLICE ALL HORIZONTAL TRANSVERSE WATERSTOPS IN BASE SLAB JOINTS TO CONTINUOUS LONGITUDINAL WATERSTOP IN WALL BASE FOR COMPLETE SEAL.
3. BOND OR SPLICE ALL VERTICAL WATERSTOPS IN WALL JOINTS TO LONGITUDINAL WATERSTOP IN WALL BASE FOR COMPLETE SEAL. SEE **1** FOR A FLAT CROSS JOINT.
4. FOR PVC WATERSTOP DETAILS, SEE **7**.

6 WATERSTOP CONNECTION
N.T.S.



NOTES:

1. NON-ROUND CENTER BULBS SHALL HAVE A MINIMUM OUTSIDE DIMENSION OF 'D'.
2. SEE SPLICE DETAIL **1**.
3. BULB TYPE WATERSTOP SHOWN IS REQUIRED FOR EXPANSION AND CONTROL JOINTS. SIMILAR WATERSTOPS WITHOUT CENTER BULB MAY BE SUBSTITUTED AT CONSTRUCTION JOINTS.
4. USE 150mm WATERSTOPS IN ALL CONSTRUCTION JOINTS, UNLESS SHOWN OTHERWISE.
5. USE 225mm WATERSTOPS FOR ALL EXPANSION JOINTS, TYPICAL.

7 PVC WATERSTOP
N.T.S.



NO.	REVISIONS	DATE	BY
00	ISSUED FOR TENDER	07/01/31	MH

DESIGNED BY	MH	CHECKED BY	AP
DRAWN BY	CR	APPROVED BY	AHL
SCALE:	NTS	RELEASED FOR CONSTRUCTION BY:	R. SOROKOWSKI
DATE	2006/08/21	DATE	2007/01/31

ENGINEER'S SEAL	ORIGINAL SIGNED BY	D. KRUGER
	DATE	2007/01/31
CONSULTANT DRAWING NO.	WJ-S0452	

THE CITY OF WINNIPEG
WATER AND WASTE DEPARTMENT
ENGINEERING DIVISION

WATER TREATMENT PLANT
SODIUM HYPOCHLORITE BUILDING
SODIUM HYPOCHLORITE AND CHEMICAL STORAGE BUILDINGS

STRUCTURAL
SODIUM HYPOCHLORITE BUILDING
STANDARD DETAILS

CITY FILE NUMBER
SHEET OF
CITY DRAWING NUMBER
1-0601J-A-S0452-001-000