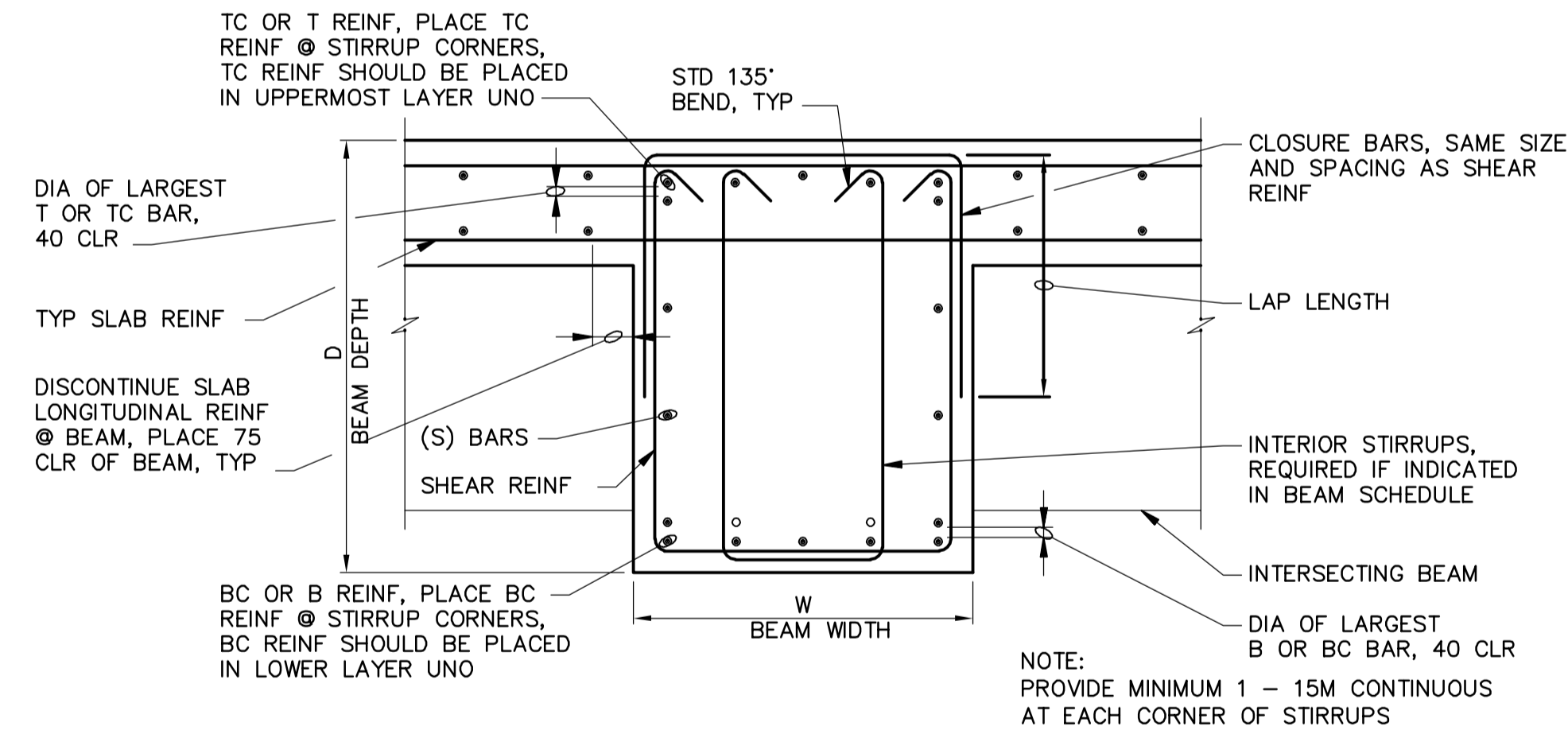


BEAM NO. (SEE PLANS)	SIZE		TOP REINF AT LEFT SUPPORT		BOTTOM REINF		* TOP REINF AT RIGHT SUPPORT		S BARS	SHEAR REINF (mm)		REMARKS
	W	D	T	TC	B	BC	T	TC		NO. SIZE	SPACING FROM LEFT SUPPORT	
GB-20	500	800	-	4-25M	-	4-25M	-	4-25M	2-20M	2-10M	200	SEE 2
GB-21	450	1550	-	4-30M	-	4-30M	-	4-30M	2-20M	2-10M	200	
GB-22	450	1100	-	4-30M	-	4-30M	-	4-30M	4-20M	2-10M	200	
GB-23	450	800	-	4-25M	-	4-25M	-	4-25M	2-20M	2-10M	200	

BEAM SCHEDULE
N.T.S.

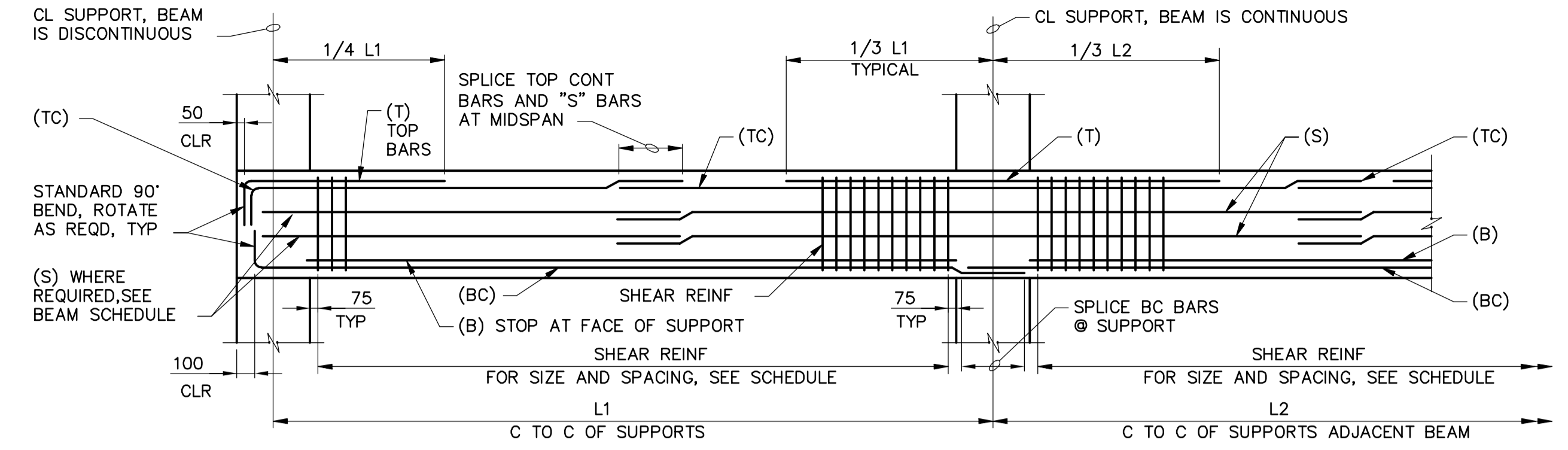
NOTES:

- * TOP REINFORCING MAY BE CALLED-OUT TWICE IN SCHEDULE. (I.E. "TOP REINFORCING AT RIGHT SUPPORT" OF BEAM THAT IS CONTINUOUS OVER THE RIGHT SUPPORT IS CALLED-OUT AS "TOP REINFORCING AT LEFT SUPPORT" OF ADJACENT BEAM.)
- LEFT SUPPORT IS DESIGNATED AS THE SUPPORT CLOSEST TO THE LEFT SIDE OR BOTTOM OF SHEET ON WHICH FRAMING PLAN IS DRAWN, UNLESS NOTED OTHERWISE ON PLAN.
- FOR CONCRETE BEAM END DETAIL, SEE 4 WJ-S0454
- EXTEND T&B BARS 1800mm PAST FURTHEST FACE OF OPENING. HOOK @ DISCONTINUOUS ENDS.
- HOOK DISCONTINUOUS ENDS OF S-BARS. SEE DETAIL 1 WJ-S0452
- EXTEND TOP BARS INTO SLAB 1800mm AT NORTH END.
- WHERE FLOOR SLOPES, DEPTH OF BEAM (D) SHOWN IS MINIMUM DEPTH. BOTTOM ELEVATION OF BEAM SHALL BE CONSTANT, UNLESS INDICATED OTHERWISE.



TYPICAL BM SECTION

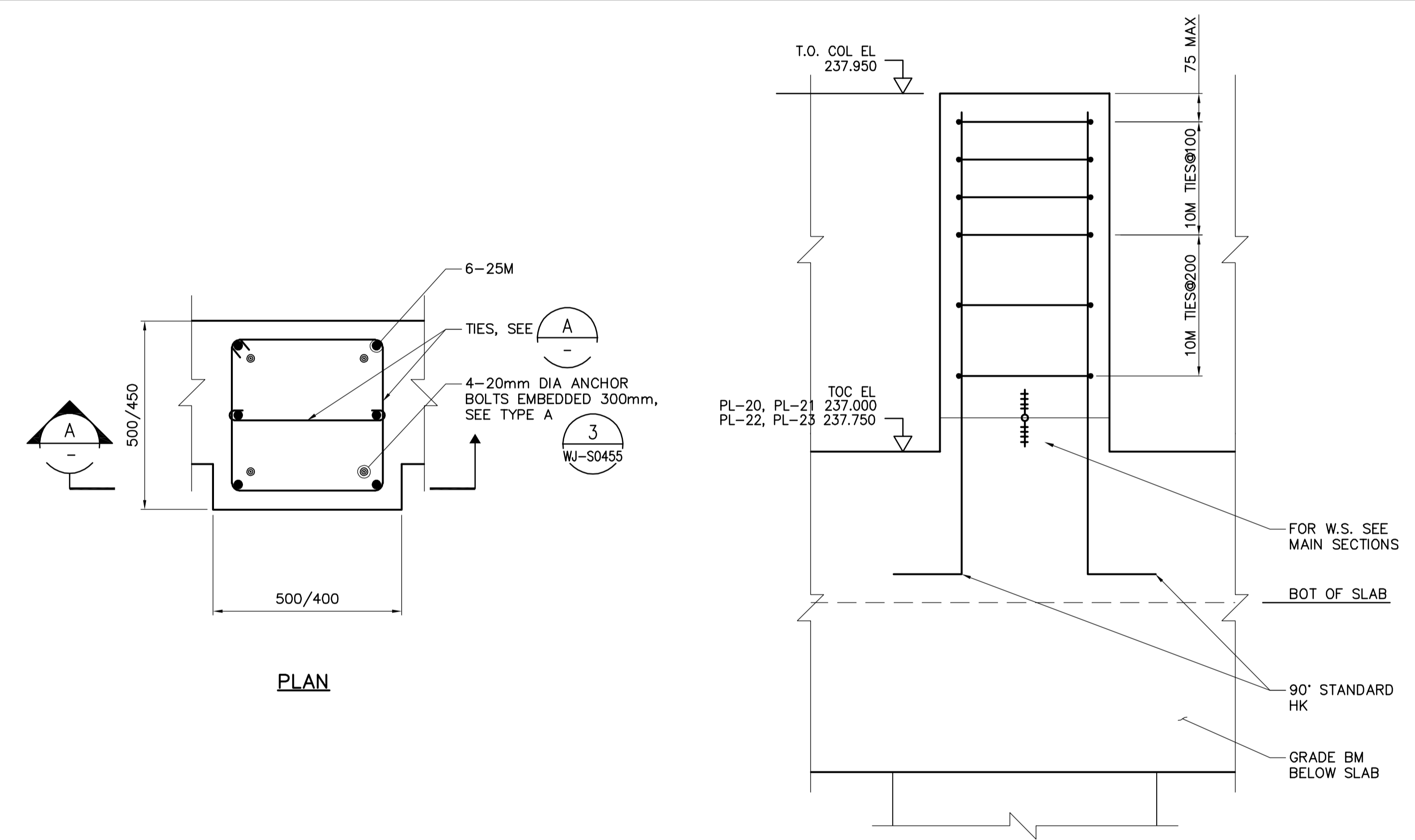
1 **DETAIL**
N.T.S.



BEAM REINFORCING
N.T.S.

NOTES:

- PLACE TOP (T & TC) AND BOTTOM (B & BC) BARS IN MULTIPLE ROWS ONLY WHERE INDICATED IN SCHEDULE.
- WHEN INDICATED IN BEAM SCHEDULE, SUBSTITUTE CLOSED TIES (□) FOR STIRRUPS AND CLOSURE BARS SHOWN (□).



PLAN

A **SECTION**
1:10

NOTES:

- USE 2-10M@100 TIES FOR PILASTERS PL-22 AND PL-23.
- PL-20= 500(L) x 500(W) x 950(H)
PL-21= 400(L) x 450(W) x 950(H)
PL-22= 400(L) x 450(W) x 200(H)
PL-23= 500(L) x 500(W) x 200(H)

PL-20 THRU PL-23

2 **COLUMN/PILASTER REINFORCING**
N.T.S.



NO.	REVISIONS	DATE	BY
00	ISSUED FOR TENDER	07/01/31	MH

DESIGNED BY	CHECKED BY
MH	AP
DRAWN BY	APPROVED BY
CR	AHL
SCALE:	RELEASED FOR CONSTRUCTION BY:
NTS	R. SOROKOWSKI

ENGINEER'S SEAL
ORIGINAL SIGNED BY D. KRUGER 2007/01/31
CONSULTANT DRAWING NO. WJ-S0515

THE CITY OF WINNIPEG
WATER AND WASTE DEPARTMENT
ENGINEERING DIVISION

WATER TREATMENT PLANT
SODIUM HYPOCHLORITE BUILDING
SODIUM HYPOCHLORITE AND CHEMICAL STORAGE BUILDINGS

STRUCTURAL
SODIUM HYPOCHLORITE BUILDING
BEAM SCHEDULE AND COLUMN REINFORCING

CITY FILE NUMBER
SHEET OF
CITY DRAWING NUMBER
1-0601J-D-S0515-001-000