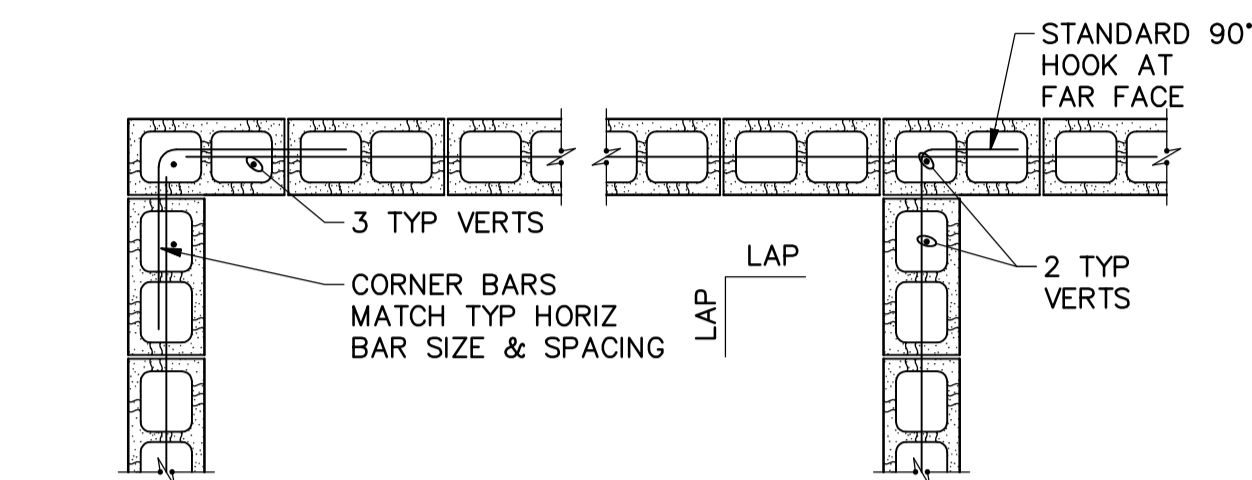


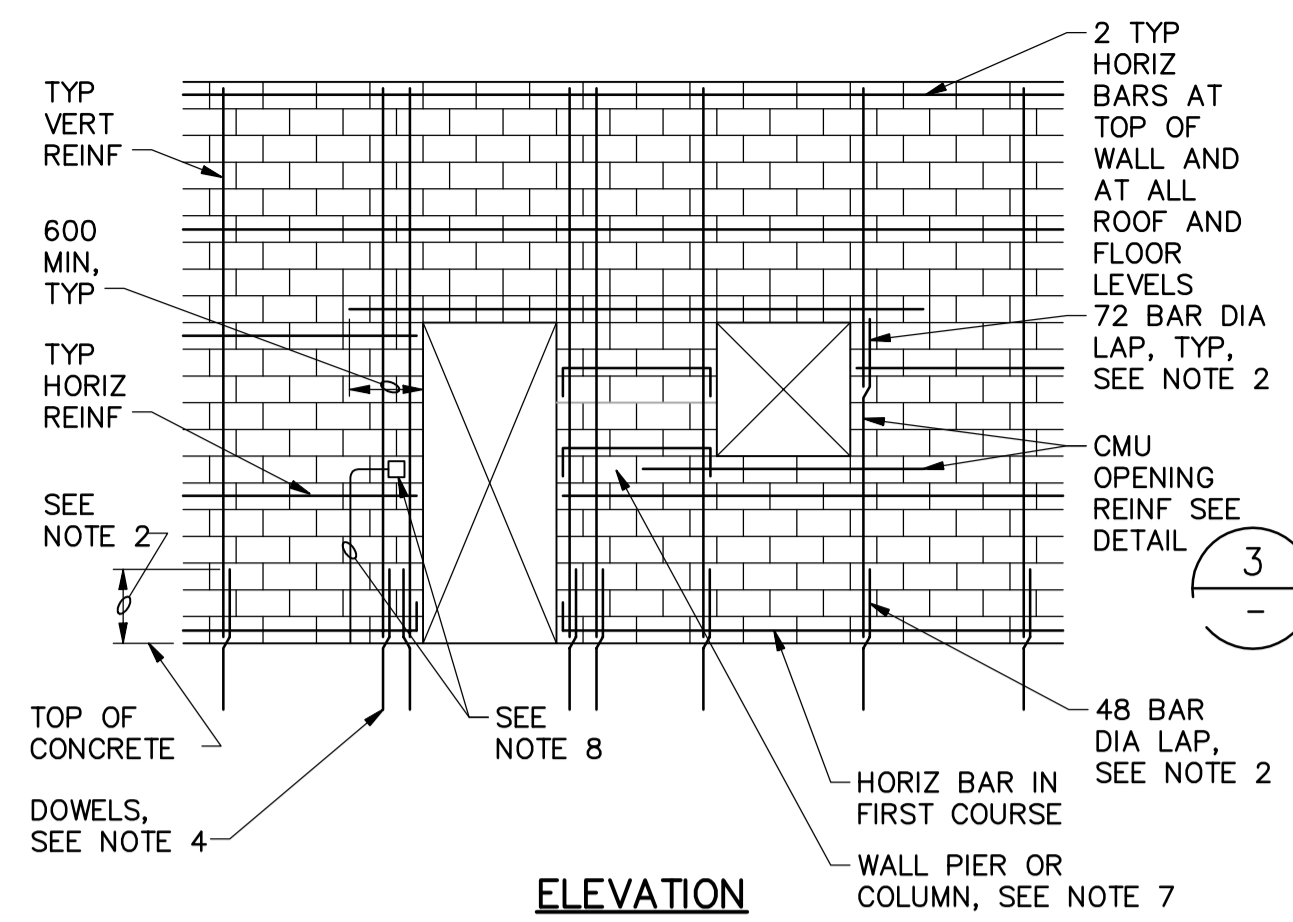
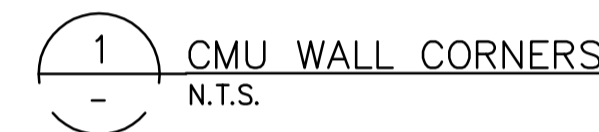
EXTERIOR CORNER INTERIOR CORNER
DOUBLE MAT PLAN (CMU 240mm AND MORE)



EXTERIOR CORNER INTERIOR CORNER
SINGLE MAT PLAN (CMU 190mm AND LESS)

NOTES:

- LAP = 48 BAR DIAMETERS OR 600 MINIMUM UNLESS OTHERWISE NOTED.
- PROVIDE A STANDARD 90° HOOK EACH END ON ANY HORIZONTAL BAR BETWEEN OPENINGS, CONTROL JOINTS, OR CORNERS LESS THAN 1800 IN LENGTH.



ELEVATION

NOTES:

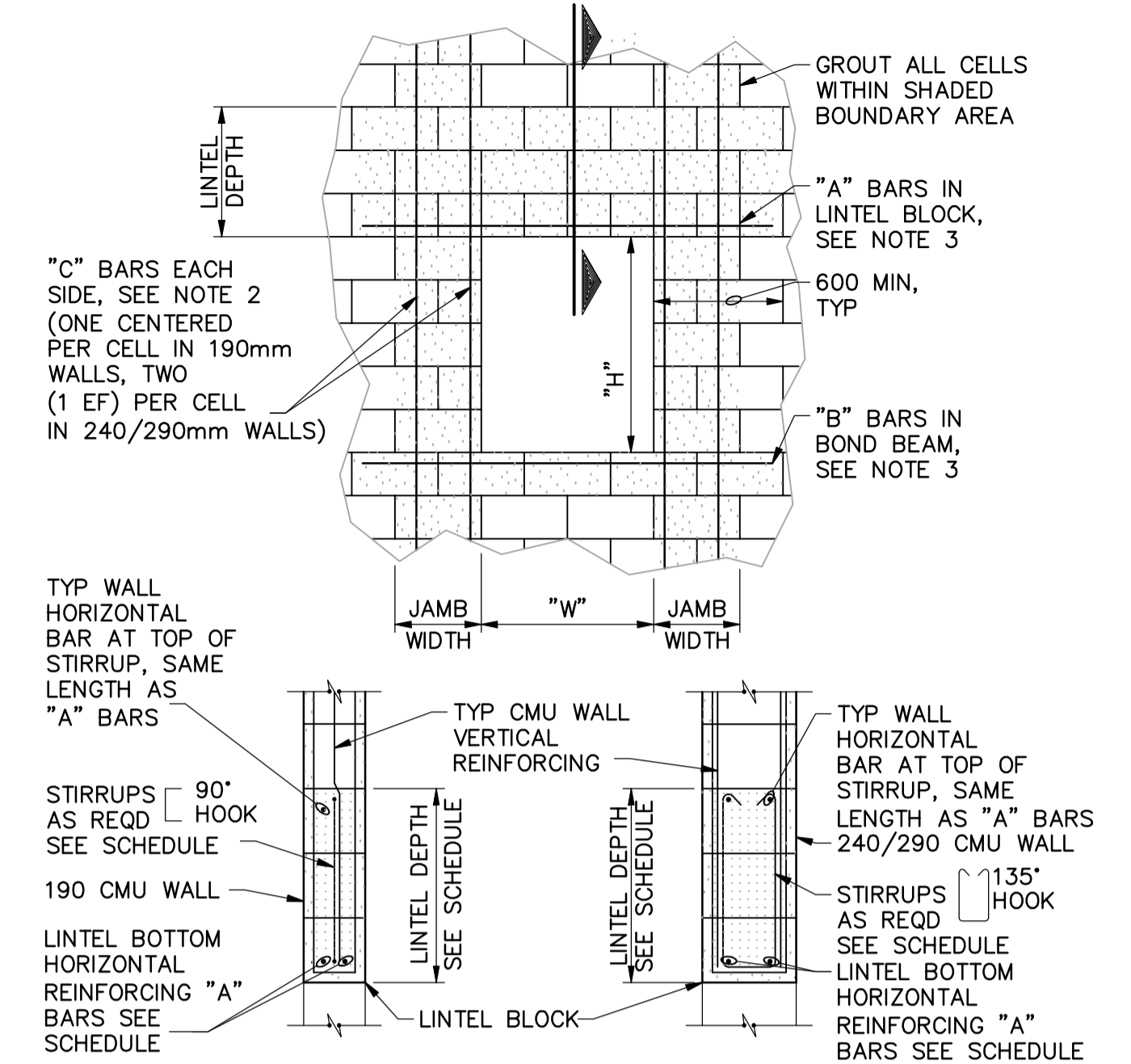
- FOR TYPICAL WALL REINFORCING, SEE WALL SECTIONS AND DETAILS FOR EACH FACILITY. FOR MINIMUM REINFORCING REQUIREMENTS, SEE GENERAL STRUCTURAL NOTES. PROVIDE 20M BAR UNO.
- LAP VERTICAL REINFORCING WITH WALL DOWELS 48 BAR DIAMETERS (600mm MIN), LAP ALL OTHER VERTICAL BARS 72 BAR DIAMETERS.
- STAGGER SPLICES IN ADJACENT HORIZONTAL BARS IN THE SAME COURSE BY 600mm.
- DOWEL BARS IN FOUNDATION INSTALLED BY OTHERS.
- FOR ADDED REINFORCING AT WALL INTERSECTIONS AND CORNERS, SEE DETAIL 1.
- GROUT EACH SIDE OF OPENING AS NOTED IN TYPICAL OPENING REINFORCING DETAIL 3.
- FOR HORIZONTAL REINFORCING AT OPENINGS SEE COLUMN AND PIER DETAILS.
- DO NOT PLACE VERTICAL CONDUIT IN THE SAME CELL AS VERTICAL REINFORCING.



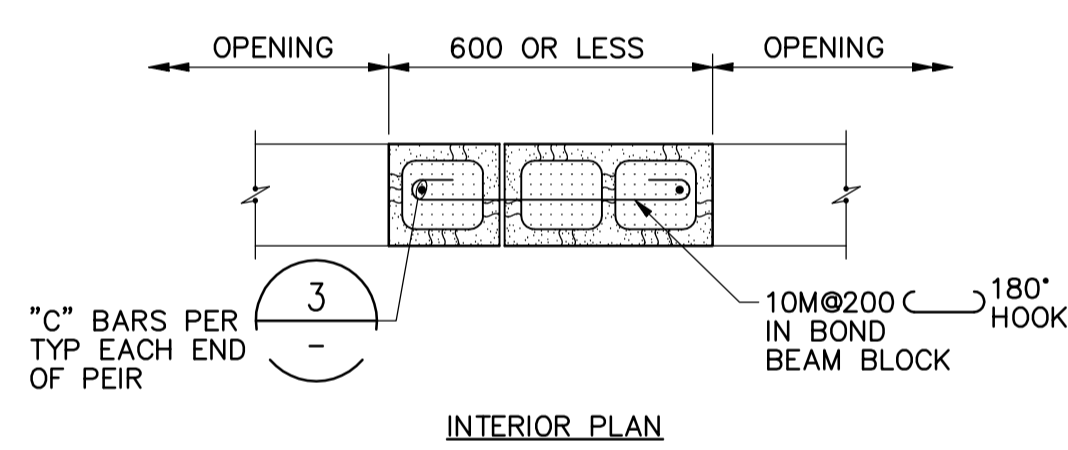
| CMU OPENING REINF SCHEDULE | | | | | | |
|----------------------------|--------------|-------------------|----------|----------|----------|------------|
| 190mm WALLS | | | | | | |
| W | LINTEL DEPTH | STIRRUP SIZE, SPG | "A" BARS | "B" BARS | "C" BARS | JAMB WIDTH |
| ≤800 | 200mm | — | 1 | 1 | 1 | 200mm |
| >800≤1200 | 400mm | — | 2 | 1 | 1 | 200mm |
| >1200≤1800 | 600mm | 10M@200 | 2 | 1 | 2 | 400mm |
| >1800≤2400 | 800mm | 10M@400 | 2 | 2 | 3 | 600mm |
| >2400≤3000 | 1200mm | 10M@600 | 2 | 2 | 3 | 600mm |
| 240/290mm WALLS | | | | | | |
| W | LINTEL DEPTH | STIRRUP SIZE, SPG | "A" BARS | "B" BARS | "C" BARS | JAMB WIDTH |
| ≤800 | 200mm | — | 2 | 2 | 2 | 200mm |
| >800≤1200 | 400mm | — | 2 | 2 | 2 | 200mm |
| >1200≤1800 | 600mm | 10M@200 | 2 | 2 | 4 | 400mm |
| >1800≤2400 | 800mm | 10M@400 | 2 | 2 | 6 | 600mm |
| >2400≤3000 | 1200mm | 10M@600 | 2 | 2 | 6 | 600mm |

NOTES:

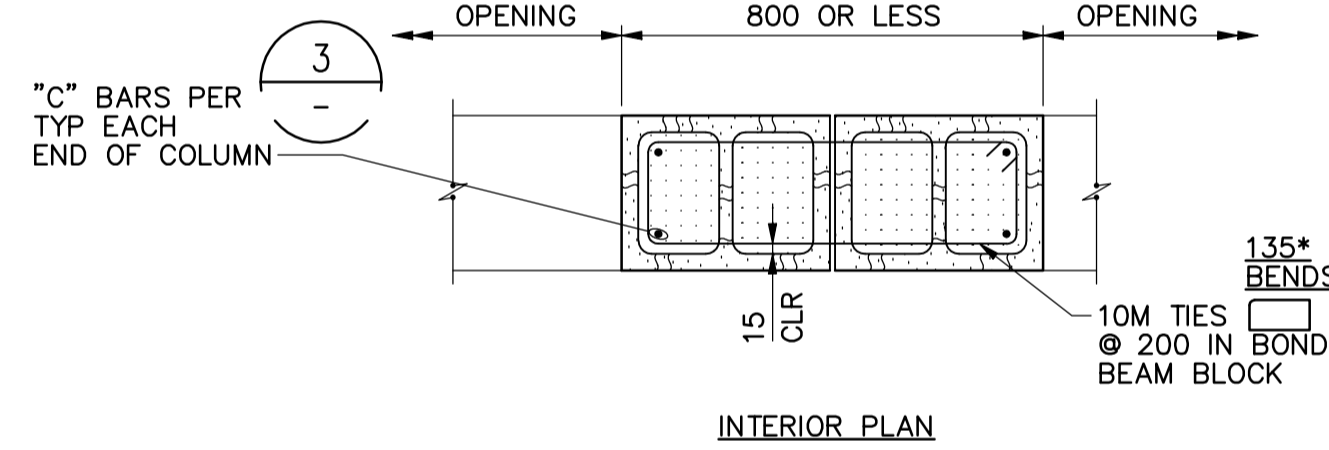
- USE BAR QUANTITIES AND SIZES GIVEN IN LINTEL SCHEDULE UNLESS OTHERWISE NOTED ON THE DRAWINGS.
- EXTEND "C" BARS 48 BAR DIAMETERS OR 600mm MINIMUM BEYOND TOP AND BOTTOM OF OPENING EXCEPT THAT WHEN "H" OR "W" EXCEEDS 600mm, "C" BARS SHALL EXTEND FULL HEIGHT. WHERE THERE IS LESS THAN 2400mm BETWEEN ADJACENT OPENINGS, EXTEND REINFORCING CONTINUOUS TO 800mm BEYOND FURTHEST OPENING.
- "A" AND "B" BARS SHALL EXTEND 48 BAR DIAMETERS OR 600mm MINIMUM EACH SIDE OF THE OPENINGS.
- FOR BAR SIZES, MATCH TYPICAL WALL REINFORCING AS SHOWN ON THE BUILDING WALL SECTIONS.
- BAR A = 20M DIA, BAR B & C = 15M DIA



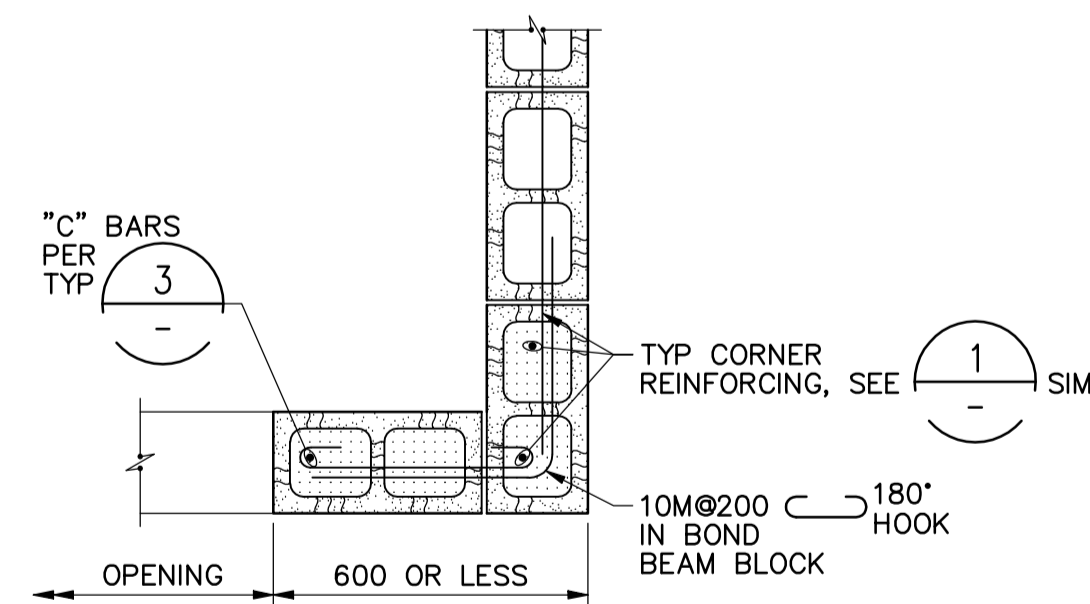
190mm LINTEL SECTION 240/290mm LINTEL SECTION



INTERIOR PLAN

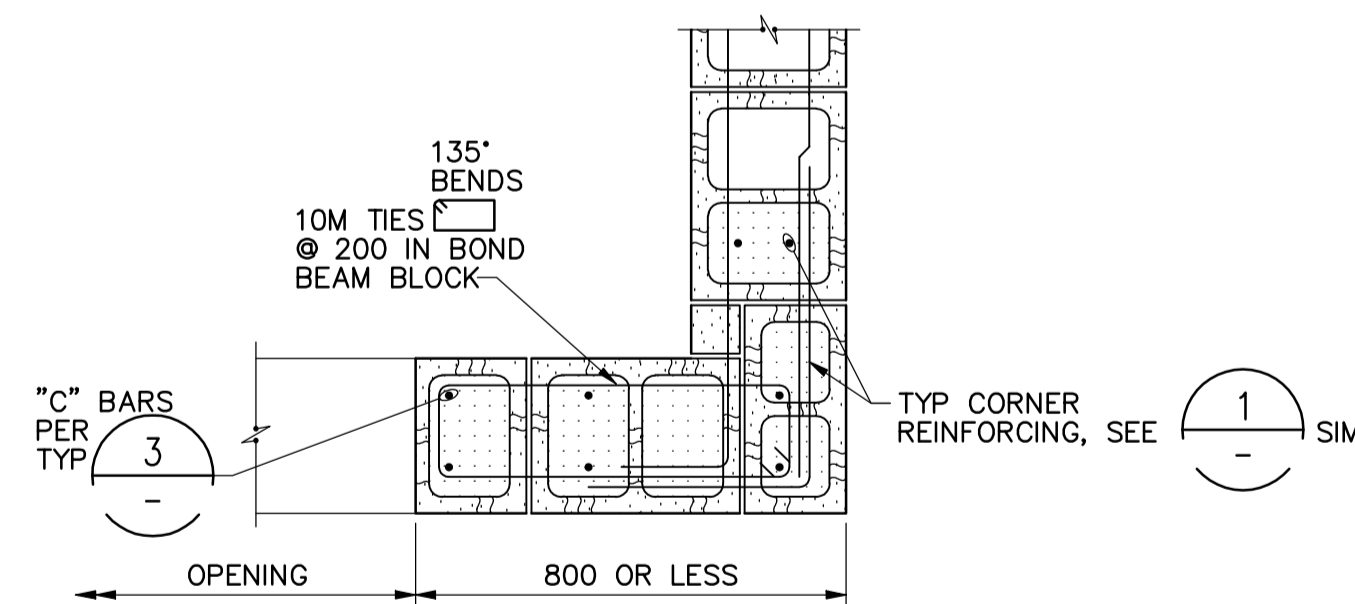


INTERIOR PLAN



CORNER PLAN

190mm CMU WALL

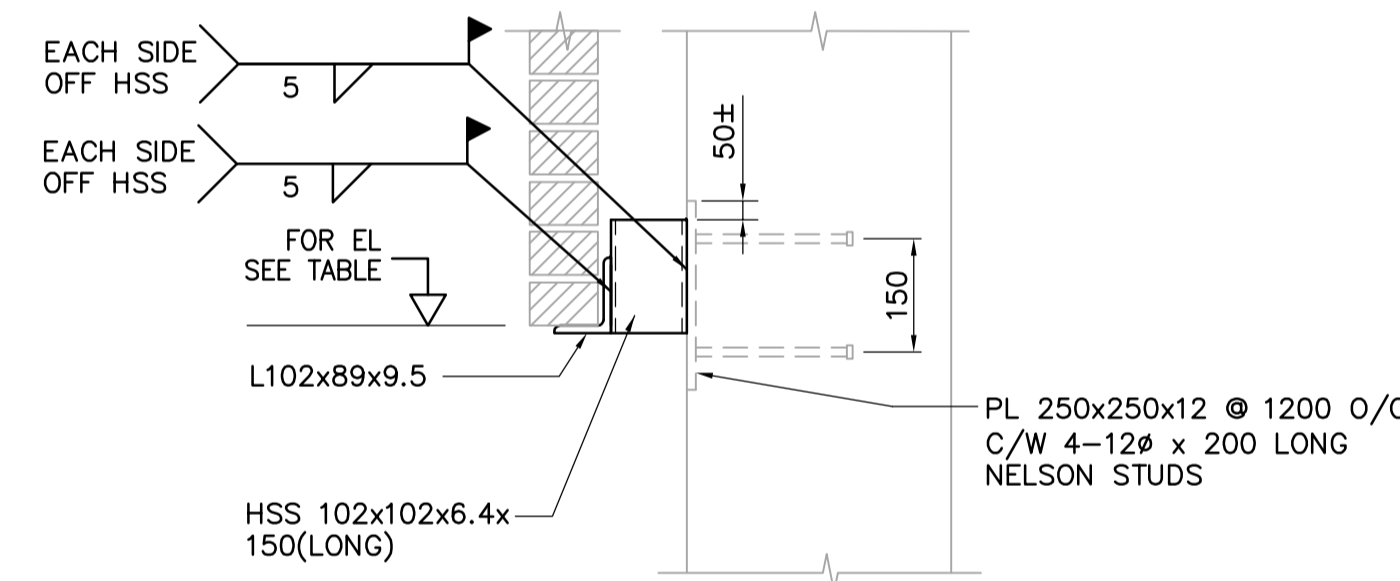


CORNER PLAN

240/290mm CMU WALL

NOTE:

GROUT WALL COLUMNS FULL WALL HEIGHT.



| LOCATION | ELEVATION |
|--------------------------------|-----------|
| NORTH ELEVATION | 237.170 |
| WEST ELEVATION | 237.170 |
| SOUTH ELEVATION | 236.670 |
| FROM B1 - B2, B13 TO SE CORNER | 236.670 |
| EAST ELEVATION | 236.670 |
| FROM SE CORNER TO BC | 236.670 |
| FROM BC TO NE CORNER | 237.170 |

NOTE:

ANGLE AND HSS ARE SUPPLIED IN A SEPARATE CONTRACT AND ARE TO BE INSTALLED IN THIS CONTRACT.



| | | | | | | | | | | |
|---|---------------------|---|--|-----------------|---|-------------------------------|---------------|---|---------------------|-------------------------|
| <p>Certificate of Authorization CH2M HILL Canada Ltd. No. 1441 Expiry: April 30, 2007</p> | B.M. ELEV. | <p>Frederickson Cooper ARCHITECTS</p> | <p>A Tyco International Ltd. Company</p> | ENGINEER'S SEAL | <p>THE CITY OF WINNIPEG WATER AND WASTE DEPARTMENT ENGINEERING DIVISION</p> | | | | | |
| | DESIGNED BY | | | MH | | CHECKED BY | AP | ORIGINAL SIGNED BY | D. KRUGER | |
| | DRAWN BY | | | CR | | APPROVED BY | AHL | DATE | 2007/04/10 | |
| | SCALE: | | | NTS | | RELEASED FOR CONSTRUCTION BY: | R. SOROKOWSKI | CONSULTANT DRAWING NO. | WB-S6451 | |
| NO. | 793-2006 ADDEMDUM 2 | DATE | 07/04/10 | DATE | 2006/05/15 | DATE | 2007/03/07 | WATER TREATMENT PLANT MAIN BUILDING BUILDING ENVELOPE | CITY FILE NUMBER | |
| REVISIONS | | | | | | | | STRUCTURAL | SHEET | OF |
| | | | | | | | | STANDARD DETAILS | CITY DRAWING NUMBER | 1-0601B-A-S6451-001-000 |