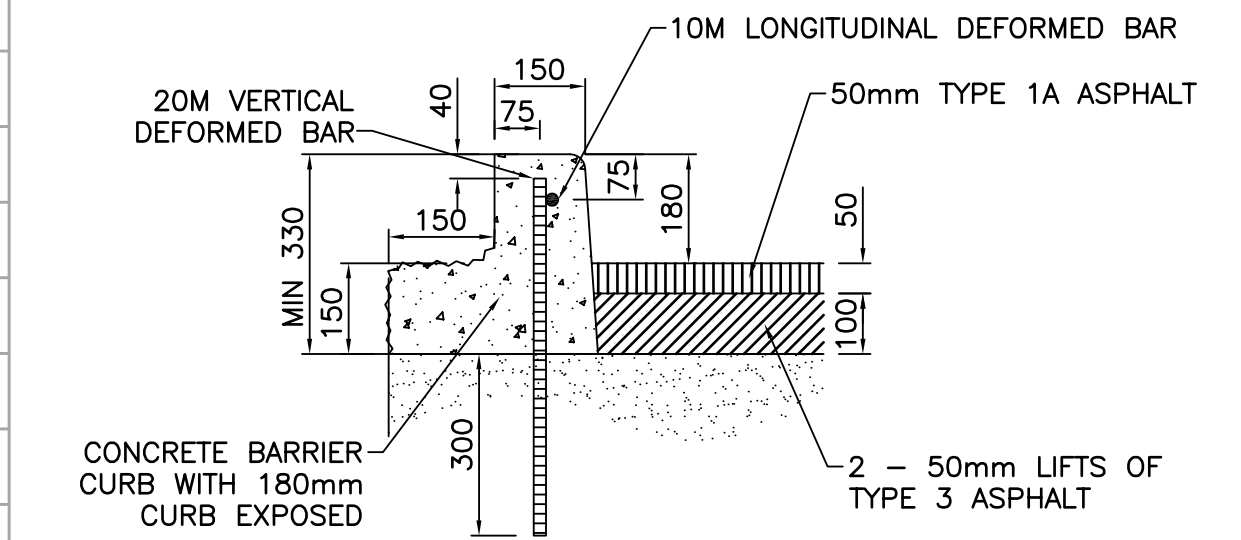
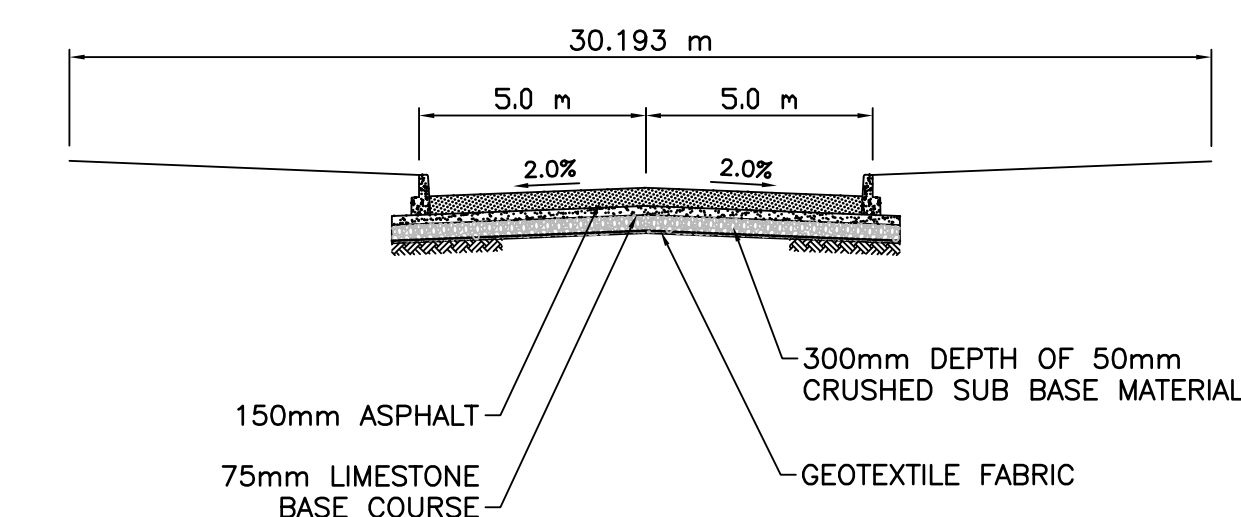


L = 145 m W = 10 m A = 1450 m²
TYPE - ASPHALT RECONSTRUCTION

- CONSTRUCTION NOTES:**
1. CONTRACTOR SHALL TAKE PRECAUTIONARY STEPS TO AVOID DAMAGE FROM CONSTRUCTION ACTIVITIES TO EXISTING BOULEVARDS AND TREES WITHIN THE LIMITS OF CONSTRUCTION.
 2. LOCATION OF EXISTING SERVICES ARE TO BE CONFIRMED IN THE FIELD BY THE CONTRACTOR.
 3. TIE-INS TO BE VERIFIED IN THE FIELD BY THE CONTRACT ADMINISTRATOR.
 4. SIDEWALK RENEWAL TO BE FINALIZED IN THE FIELD BY THE CONTRACT ADMINISTRATOR
 5. BOULEVARD REPLACEMENT TO BE FINALIZED IN THE FIELD AS DIRECTED BY THE CONTRACT ADMINISTRATOR.
 6. 300mm SUB BASE TO BE ADDED WHERE OVER EXCAVATION IS REQUIRED AS DIRECTED IN THE FIELD BY THE CONTRACT ADMINISTRATOR.



REVERSE CURB & GUTTER DETAIL
N.T.S.



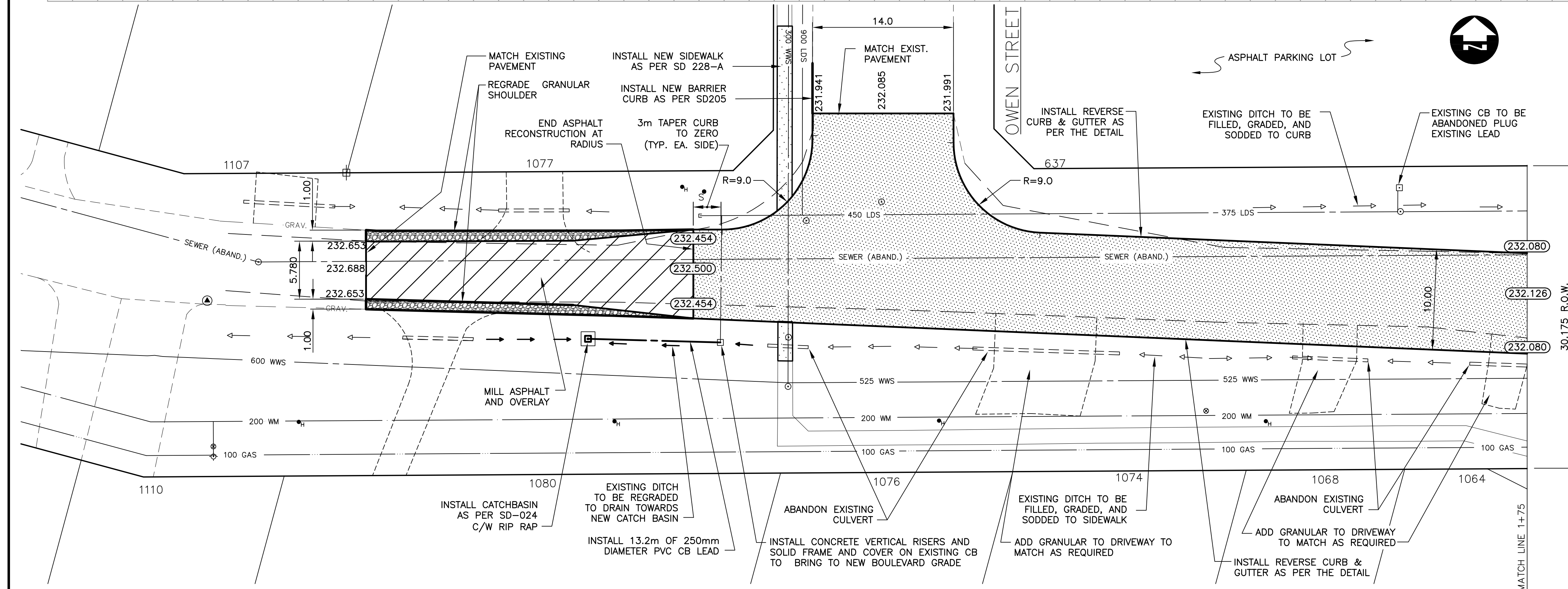
TYPICAL ASPHALT CROSS SECTION
N.T.S.

METRIC
WHOLE NUMBERS INDICATE MILLIMETRES
DECIMALIZED NUMBERS INDICATE METRES

WARNING

IF POWER EQUIPMENT OR EXPLOSIVES ARE TO BE USED FOR EXCAVATION ON THIS PROJECT THE CONTRACTOR MUST:

1. NOTIFY THE GAS COMPANY OF THE PROPOSED LOCATION OF EXCAVATION.
2. TAKE PRECAUTION TO AVOID DAMAGE TO GAS COMPANY INSTALLATIONS SEE PROVINCIAL REGULATION 210/72 FOR DETAILS



PANDORA AVENUE

331 (654331) - TBLT. IN E. FACE OF CONC. BASE OF CANTILEVER ABANDONED SIGNALS S. OF C.N.R. TRACKS, APPROX. 81.4m W. OF LINE OF W. WALL OF GARAGE, ATTACHED TO BUNGALOW No. 1080 PANDORA AVE.

150 mm W.M.	WATERMAIN	150 mm W.M.	HYDRO	150 mm W.M.	WATERMAIN	150 mm W.M.
Hydrant Valve	Hydrant Valve	Concrete	Concrete	Hydrant Valve	Hydrant Valve	Hydrant Valve
300 mm L.D.S.	LAND DRAINAGE SEWER	300 mm L.D.S.	LAND DRAINAGE SEWER	300 mm L.D.S.	LAND DRAINAGE SEWER	300 mm L.D.S.
250 mm W.W.S.	WASTE WATER SEWER	250 mm W.W.S.	WASTE WATER SEWER	250 mm W.W.S.	WASTE WATER SEWER	250 mm W.W.S.
Manhole	Manhole	Planing	Planing	Manhole	Manhole	Manhole
Catch Basin	Catch Basin	Sidewalk	Sidewalk	Catch Basin	Catch Basin	Catch Basin
Curb Inlet	Curb Inlet	Partial Depth Repair	Partial Depth Repair	Curb Inlet	Curb Inlet	Curb Inlet
Junctions	Junctions	Property Line	Property Line	Junctions	Junctions	Junctions
Culvert	Culvert	Survey Bar	Survey Bar	Culvert	Culvert	Culvert
Gas	Gas	Paraplegic Ramp	Paraplegic Ramp	Gas	Gas	Gas
Existing	Legend-Plan	Proposed	Legend-Plan	Proposed	Legend-Profile	Proposed

UNDERGROUND STRUCTURES		B.M. 29-003	DESIGNED BY	TJP
SUPPLY, U/G STRUCTURES COMMITTEE		ELEV. 232.447	DRAWN BY	PMW
NOTE:			CHECKED BY	DPK
LOCATION OF UNDERGROUND STRUCTURES AS SHOWN ARE BASED ON THE BEST INFORMATION AVAILABLE. BUT NO GUARANTEE IS GIVEN THAT ALL EXISTING UTILITIES ARE SHOWN OR THAT THE GIVEN LOCATIONS ARE EXACT. CONFIRMATION OF EXISTENCE AND EXACT LOCATION OF ALL SERVICES MUST BE OBTAINED FROM THE INDIVIDUAL UTILITIES BEFORE PROCEEDING WITH CONSTRUCTION.			REVIEWED BY	ORIGINAL SIGNED BY: D.P. KRAHN
1	ISSUED FOR TENDER	02/21/07	HOR. SCALE	1:250
			VERTICAL	1:10
			RELEASED FOR CONSTRUCTION ORIGINAL SIGNED BY: K. TURKO	
			DATE	FEB. 21, 2007

DILLON CONSULTING

ENGINEER'S SEAL
PROVINCE OF MANITOBA
REGISTERED PROFESSIONAL ENGINEER
T.J. PETERS
Member 22309

CONSULTANT PROJECT NO.
066968-2000

THE CITY OF WINNIPEG PUBLIC WORKS DEPARTMENT

2007 RESIDENTIAL STREET RENEWAL PROJECT

PANDORA AVENUE WEST
OWEN STREET TO BOURNAIS DRIVE
STA. 0+40 TO STA. 1+75

CITY DRAWING NUMBER
SHEET 1 OF 2