

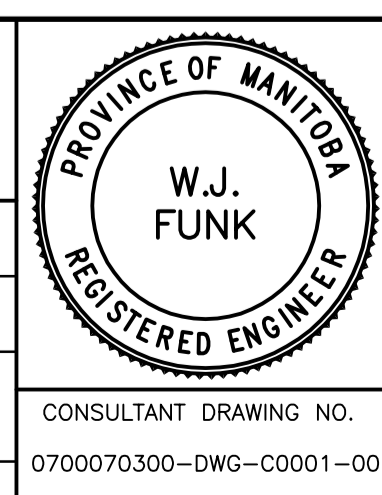
LAYOUT COORDINATES (NAD 83)		
DESCRIPTION	NORTHING	EASTING
CP No. 1 (IB)	5521262.66	634439.99
CP No. 2 (IB)	5521270.34	634475.12
PCC 0+67.60	5521225.40	634461.42
EC 1+21.36	5521275.64	634441.24
EC 1+05.06	5521271.91	634467.71

150 WM	WATERMAIN	150 WM	○	MANHOLE	●
400 FM	FEEDERMAIN	400 FM	□	CATCHBASIN	■
300 LDS	LAND DRAINAGE SEWER	300 LDS	▽	CURB INLET	▼
250 WWS	WASTEWATER SEWER	250 WWS	•	HYDRO POLE	○
300 CS	COMBINED SEWER	300 CS	••	LIGHT STANDARD	×31.175
200 FCM	FORCEMAIN	200 FCM	⊖	ANCHOR	—
—	JUNCTIONS	—	⊕	TREE	—
⊕	HYDRANT	⊕	15,240	LEGAL DIMENSION	—
⊙	VALVE	⊙	—	SURVEY BAR	—
⊙	CURB STOP	—	—	TRAFFIC SIGNAL	—
EXISTING	LEGEND—PLAN	PROPOSED	EXISTING	LEGEND—PLAN	PROPOSED

LOCATION APPROVED UNDERGROUND STRUCTURES	B.M. ELEV.	F.B. 2153
SUPV. U/G STRUCTURES COMMITTEE	DATE	
NOTE: LOCATION OF UNDERGROUND STRUCTURES AS SHOWN ARE BASED ON THE BEST INFORMATION AVAILABLE. BUT NO GUARANTEE IS GIVEN THAT ALL EXISTING UTILITIES ARE SHOWN OR THAT THE GIVEN LOCATIONS ARE EXACT. CONFIRMATION OF EXISTENCE AND EXACT LOCATION OF ALL SERVICES MUST BE OBTAINED FROM THE INDIVIDUAL UTILITIES BEFORE PROCEEDING WITH CONSTRUCTION.		

00 ISSUED FOR TENDER	07.03.06	
A ISSUED FOR APPROVAL	07.02.19	DAL
NO. REVISIONS	DATE	BY

WARDROP Engineering Inc.	
DESIGNED BY DAL	CHECKED BY
DRAWN BY GMD	APPROVED BY
HOR. SCALE: 1 : 250	RELEASED FOR CONSTRUCTION
VERTICAL: 1 : 10	DATE
06.12.04	



THE CITY OF WINNIPEG
PUBLIC WORKS DEPARTMENT
ENGINEERING DIVISION

CONCRETE PAVEMENT REPAIRS AND ASPHALT OVERLAY

DAKOTA STREET
MEADOWWOOD DRIVE TO
100m NORTH OF MEADOWWOOD DRIVE

CITY DRAWING NUMBER
P-3275-1
SHEET OF
1 5

CONSULTANT DRAWING NO.
070070300-DWG-C0001-00

C0001

