

LAYOUT COORDINATES (NAD 83)

DESCRIPTION	NORTHING	EASTING
CP No. 3 (IB)	5521387.19	634369.24
CP No. 4 (IB)	5521638.49	634227.14
BC 4+85.94	5521598.60	634271.68
EC 4+98.22	5521608.96	634265.05

CIRCULAR CURVE DATA

CURVE NO.	C4
RADIUS	115.00
DELTA	6°7'43"
TANGENT	6.16
LENGTH	12.30

REPLACE PATIO BLOCKS WITH CONCRETE SIDEWALK

150 WM	WATERMAIN	150 WM	○	MANHOLE	●
400 FM	FEEDERMAIN	400 FM	□	CATCHBASIN	■
300 LDS	LAND DRAINAGE SEWER	300 LDS	▽	CURB INLET	▼
250 WWS	WASTEWATER SEWER	250 WWS	•	HYDRO POLE	○
300 CS	COMBINED SEWER	300 CS	•	LIGHT STANDARD	×31.175
200 FCM	FORCEMAIN	200 FCM	←	ANCHOR	—
	JUNCTIONS		+	TREE	—
⊕	HYDRANT	15.240	⊕	LEGAL DIMENSION	
⊕	VALVE		⊕	SURVEY BAR	
⊕	CURB STOP		⊕	TRAFFIC SIGNAL	
EXISTING	LEGEND-PLAN	PROPOSED	EXISTING	LEGEND-PLAN	PROPOSED

LOCATION APPROVED UNDERGROUND STRUCTURES

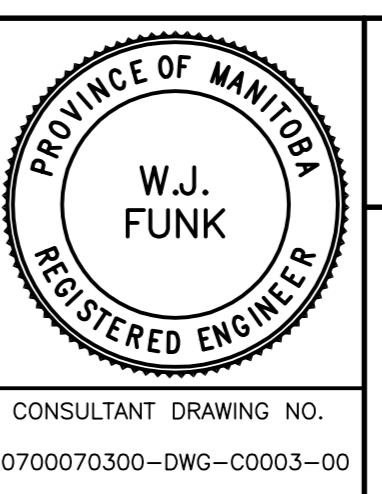
SYMBOL	DESCRIPTION	DATE
○	SUPV. U/G STRUCTURES	
□	COMMITTEE	

NOTE: LOCATION OF UNDERGROUND STRUCTURES AS SHOWN ARE BASED ON THE BEST INFORMATION AVAILABLE. BUT NO GUARANTEE IS GIVEN THAT ALL EXISTING UTILITIES ARE EXACT. CONFIRMATION OF EXISTENCE AND EXACT LOCATION OF ALL SERVICES MUST BE OBTAINED FROM THE INDIVIDUAL UTILITIES BEFORE PROCEEDING WITH CONSTRUCTION.

B.M. ELEV.	F.B.	DATE	BY
	2153		

WARDROP Engineering Inc.

DESIGNED BY	DAL	CHECKED BY	
DRAWN BY	GMD	APPROVED BY	
HOR. SCALE:	1 : 250	RELEASED FOR CONSTRUCTION	
VERTICAL:	1 : 10	DATE	
DATE	06.12.04		



THE CITY OF WINNIPEG
PUBLIC WORKS DEPARTMENT
ENGINEERING DIVISION

CONCRETE PAVEMENT REPAIRS AND ASPHALT OVERLAY

DAKOTA STREET
260m NORTH OF MEADOWOOD DRIVE TO
410m NORTH OF MEADOWOOD DRIVE

CITY DRAWING NUMBER
P-3275-3
SHEET 3 OF 5

C0003

CONSULTANT DRAWING NO.
0700070300-DWG-C0003-00