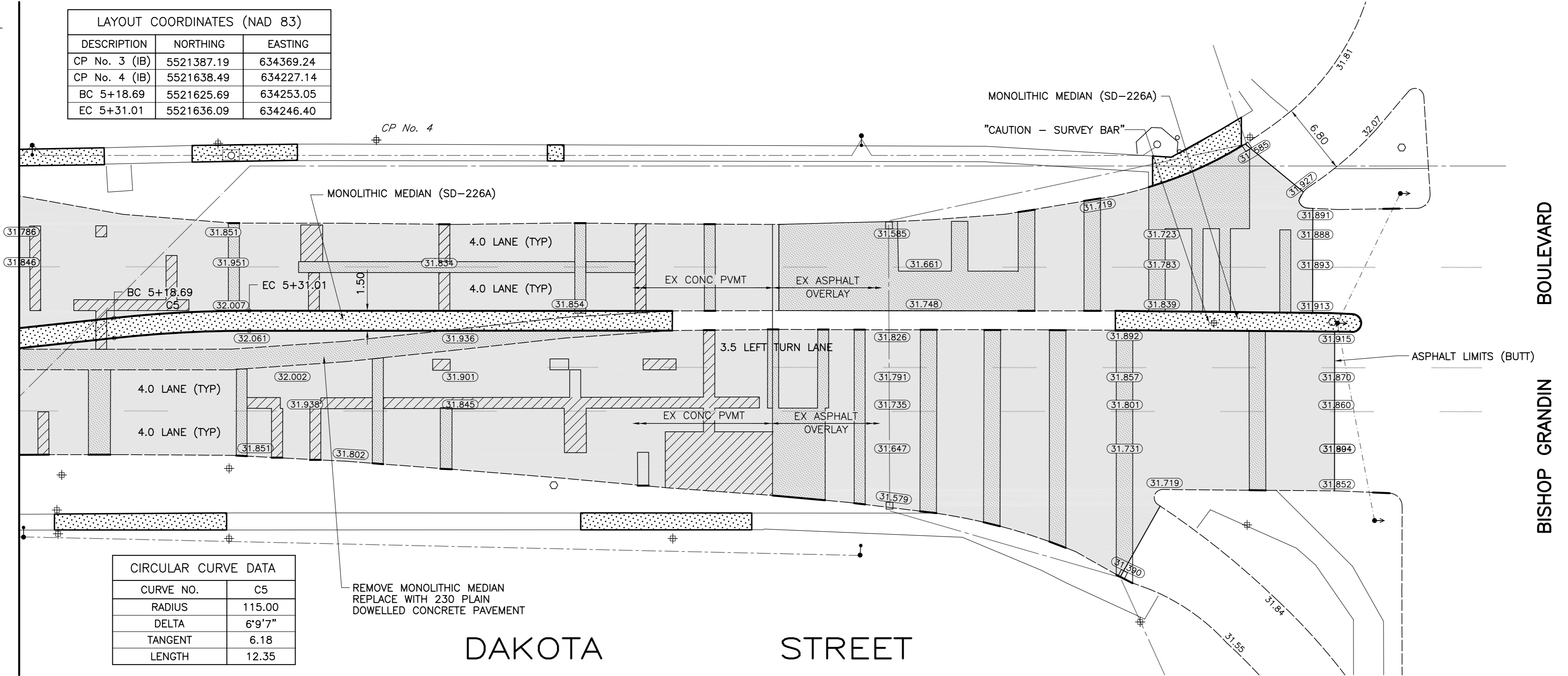


LAYOUT COORDINATES (NAD 83)

DESCRIPTION	NORTHING	EASTING
CP No. 3 (IB)	5521387.19	634369.24
CP No. 4 (IB)	5521638.49	634227.14
BC 5+18.69	5521625.69	634253.05
EC 5+31.01	5521636.09	634246.40



CIRCULAR CURVE DATA

CURVE NO.	C5
RADIUS	115.00
DELTA	6°9'7"
TANGENT	6.18
LENGTH	12.35

150 WM	WATERMAIN	150 WM	○	MANHOLE	●	GAS	—
400 FM	FEEDERMAIN	400 FM	□	CATCHBASIN	■	HYDRO	—
300 LDS	LAND DRAINAGE SEWER	300 LDS	▽	CURB INLET	▼	MTS	—
250 WWS	WASTEWATER SEWER	250 WWS	•	HYDRO POLE	○	SIGNALS MANHOLE	○
300 CS	COMBINED SEWER	300 CS	⊕	LIGHT STANDARD	×31.175	ELEVATION	(32.000)
200 FCM	FORCEMAIN	200 FCM	←	ANCHOR	—	SIDEWALK	▨
	JUNCTIONS		⊕	TREE	—	CURB	—
⊕	HYDRANT	15.240	⊕	LEGAL DIMENSION	—	ASPHALT	▨
⊕	VALVE	⊕	⊕	SURVEY BAR	—	CONCRETE	▨
⊕	CURB STOP	—	⊕	TRAFFIC SIGNAL	—	MILLING/PATCHING	▨
EXISTING	LEGEND-PLAN	PROPOSED	EXISTING	LEGEND-PLAN	PROPOSED	EXISTING	LEGEND-PLAN

LOCATION APPROVED UNDERGROUND STRUCTURES

SUPV. U/G STRUCTURES	DATE

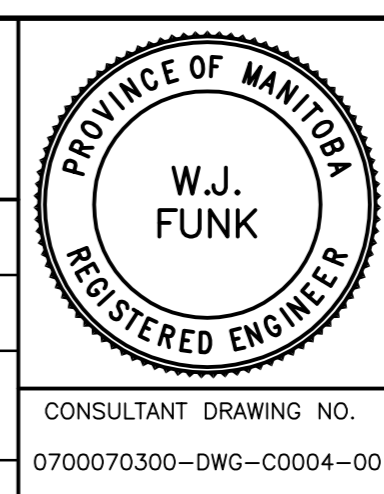
NOTE: LOCATION OF UNDERGROUND STRUCTURES AS SHOWN ARE BASED ON THE BEST INFORMATION AVAILABLE. BUT NO GUARANTEE IS GIVEN THAT ALL EXISTING UTILITIES ARE SHOWN OR THAT THE GIVEN LOCATIONS ARE EXACT. CONFIRMATION OF EXISTENCE AND EXACT LOCATION OF ALL SERVICES MUST BE OBTAINED FROM THE INDIVIDUAL UTILITIES BEFORE PROCEEDING WITH CONSTRUCTION.

B.M. ELEV. F.B. 2153

NO.	REVISIONS	DATE	BY
00	ISSUED FOR TENDER	07.03.06	LD
A	ISSUED FOR APPROVAL	07.02.19	DAL

**WARDROP Engineering Inc.**

DESIGNED BY	DAL	CHECKED BY	
DRAWN BY	GMD	APPROVED BY	
HOR. SCALE:	1 : 250	RELEASED FOR CONSTRUCTION	
VERTICAL:	1 : 10	DATE	06.12.04



**THE CITY OF WINNIPEG**  
PUBLIC WORKS DEPARTMENT  
ENGINEERING DIVISION

CONCRETE PAVEMENT REPAIRS AND ASPHALT OVERLAY

DAKOTA STREET  
410m NORTH OF MEADOWOOD DRIVE TO  
BISHOP GRANDIN BOULEVARD

CITY DRAWING NUMBER  
**P-3275-4**  
SHEET 4 OF 5  
**C0004**

CONSULTANT DRAWING NO.  
0700070300-DWG-C0004-00