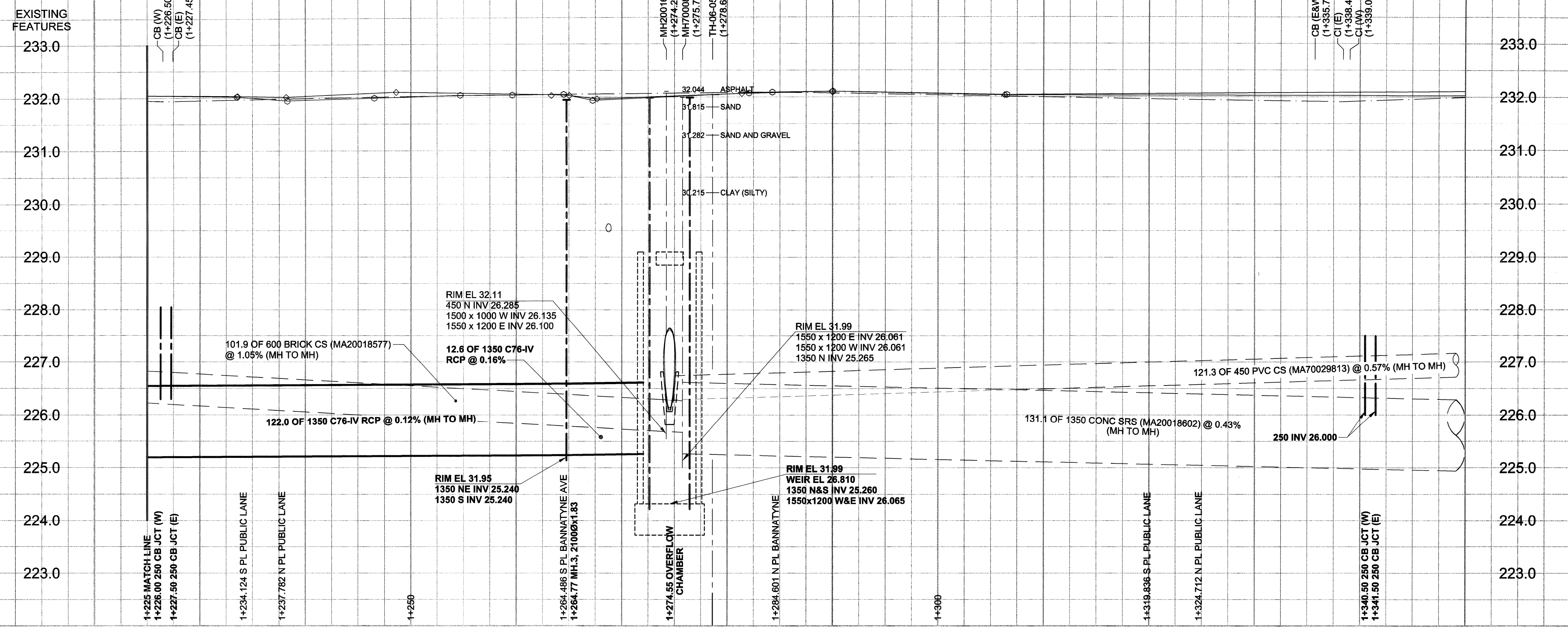


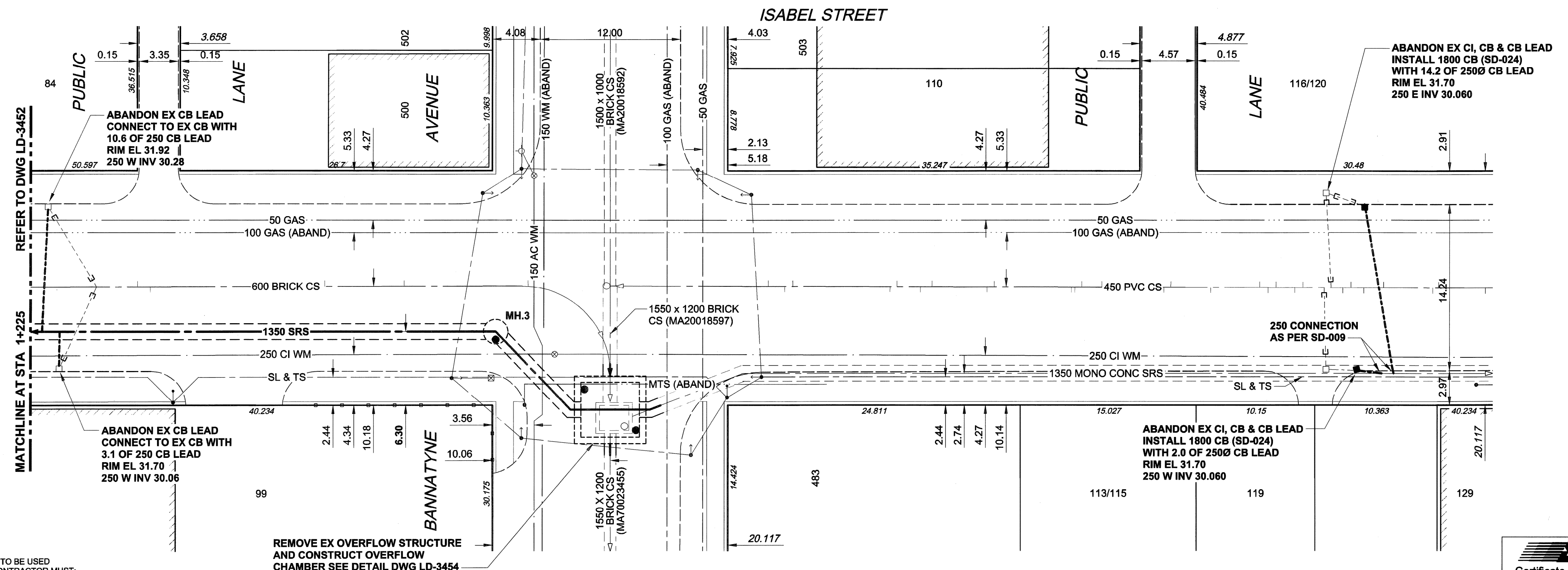
D SIZE 22" x 34" (559mm x 864mm)

PLOT: 07/01/10 9:32:19 AM

UNIFILE NAME: D285-177-03_00-C-1003_RX.dwg Saved By: lberard



CHAINAGE ALONG E PL



WARNING

IF POWER EQUIPMENT OR EXPLOSIVES ARE TO BE USED FOR EXCAVATION ON THIS PROJECT, THE CONTRACTOR MUST:

- 1) NOTIFY THE GAS COMPANY OF THE PROPOSED LOCATION OF EXCAVATION.
- 2) TAKE PRECAUTION TO AVOID DAMAGE TO GAS COMPANY INSTALLATIONS.

SEE PROVINCIAL REGULATION 140/92 FOR DETAILS

EXISTING	LEGEND - PLAN	NEW	EXISTING	LEGEND - PLAN	NEW	EXISTING	LEGEND - PROFILE	NEW
150 mm WM	WATERMAIN	150 mm WM	CURB STOP	150 mm WM	WATERMAIN	150 mm WM	WATERMAIN	150 mm WM
300 mm LDS	LAND DRAINAGE SEWER	300 mm LDS	REDUCER	300 mm LDS	HYDRANT	300 mm LDS	HYDRANT	300 mm LDS
250 mm WWS	WASTE WATER SEWER	250 mm WWS	COUPLING	250 mm WWS	VALVE	250 mm WWS	VALVE	250 mm WWS
	MANHOLE		ANODE		LAND DRAINAGE SEWER		LAND DRAINAGE SEWER	
	CATCH BASIN		HYDRO		WASTE WATER SEWER		WASTE WATER SEWER	
	CURB INLET		MTS		PAVEMENT CROWN		PAVEMENT CROWN	
	CULVERT		GAS		N/W PROPERTY LINE		N/W PROPERTY LINE	
	PIPE ABANDONMENTS		TESTHOLE		S/E PROPERTY LINE		S/E PROPERTY LINE	
	SURVEY BAR		LAMP STANDARD		N/W GUTTER		N/W GUTTER	
			TREE		S/E GUTTER		S/E GUTTER	

LOCATION APPROVED UNDERGROUND STRUCTURES

SUPR. U/G STRUCTURES DATE COMMITTEE

NOTE:
LOCATION OF UNDERGROUND STRUCTURES AS SHOWN ARE BASED ON THE BEST INFORMATION AVAILABLE. BUT NO GUARANTEE IS GIVEN THAT ALL EXISTING UTILITIES ARE SHOWN OR THAT THE GIVEN LOCATIONS ARE EXACT. CONFIRMATION OF EXISTENCE AND EXACT LOCATION OF ALL SERVICES MUST BE OBTAINED FROM THE INDIVIDUAL UTILITIES BEFORE PROCEEDING WITH CONSTRUCTION.

NO.	ISSUED FOR CONSTRUCTION	DATE	BY
0	ISSUED FOR CONSTRUCTION	07/01/10	KMB
	REVISIONS	YYMMDD	BY

METRIC
WHOLE NUMBERS INDICATE MILLIMETRES
DECIMALIZED NUMBERS INDICATE METRES

UMA | AECOM

© 2005 UMA ENGINEERING LTD. ALL RIGHTS RESERVED.

DESIGNED BY: GEB / DME
CHECKED BY: [Signature]

DRAWN BY: KMB
APPROVED BY: [Signature]

HOR. SCALE: 1:250
VERT. SCALE: 1:50

RELEASED FOR CONSTRUCTION

DATE: 07/01/10

APEGM
Certificate of Authorization
UMA Engineering Ltd.
No. 256 Expiry: April 30, 2007

- CONSTRUCTION NOTES:**
1. FOR DETAILED TEST HOLE INFORMATION, SEE SPECIFICATION.
 2. THE LOCATION OF ALL SERVICES IS TO BE CONFIRMED IN THE FIELD.
 3. INSTALL NEW SEWERS AND CATCHBASIN LEADS BY TRENCHLESS METHODS WHEREVER POSSIBLE.
 4. RENEW/REHABILITATE CATCHBASINS & RENEW CATCHBASIN LEADS WHERE NOTED.

BID OPPORTUNITY NO. 809-2006

PROFESSIONAL'S SEAL
A. NAGY
REGISTERED PROFESSIONAL ENGINEER
JAN 10/2007

CONSULTANT DRAWING NO. 03
D285-177-03

THE CITY OF WINNIPEG
WATER AND WASTE DEPARTMENT

ALEXANDER/BANNATYNE
COMBINED SEWER RELIEF
CONTRACT 3A

ISABEL STREET
40m NORTH OF McDERMOT AVENUE
TO 35m SOUTH OF WILLIAM AVENUE

SHEET 3 OF 6
CITY DRAWING NUMBER
LD-3453