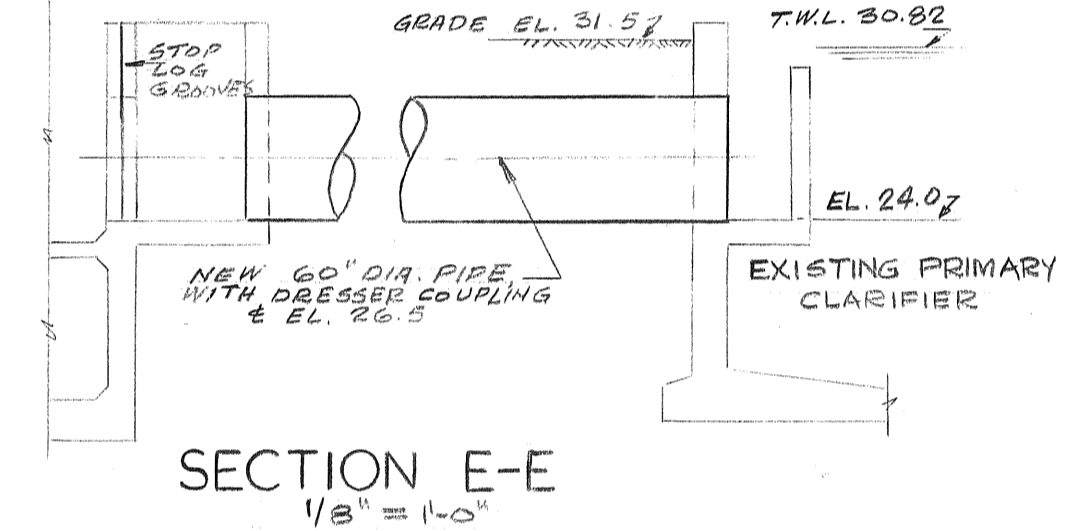
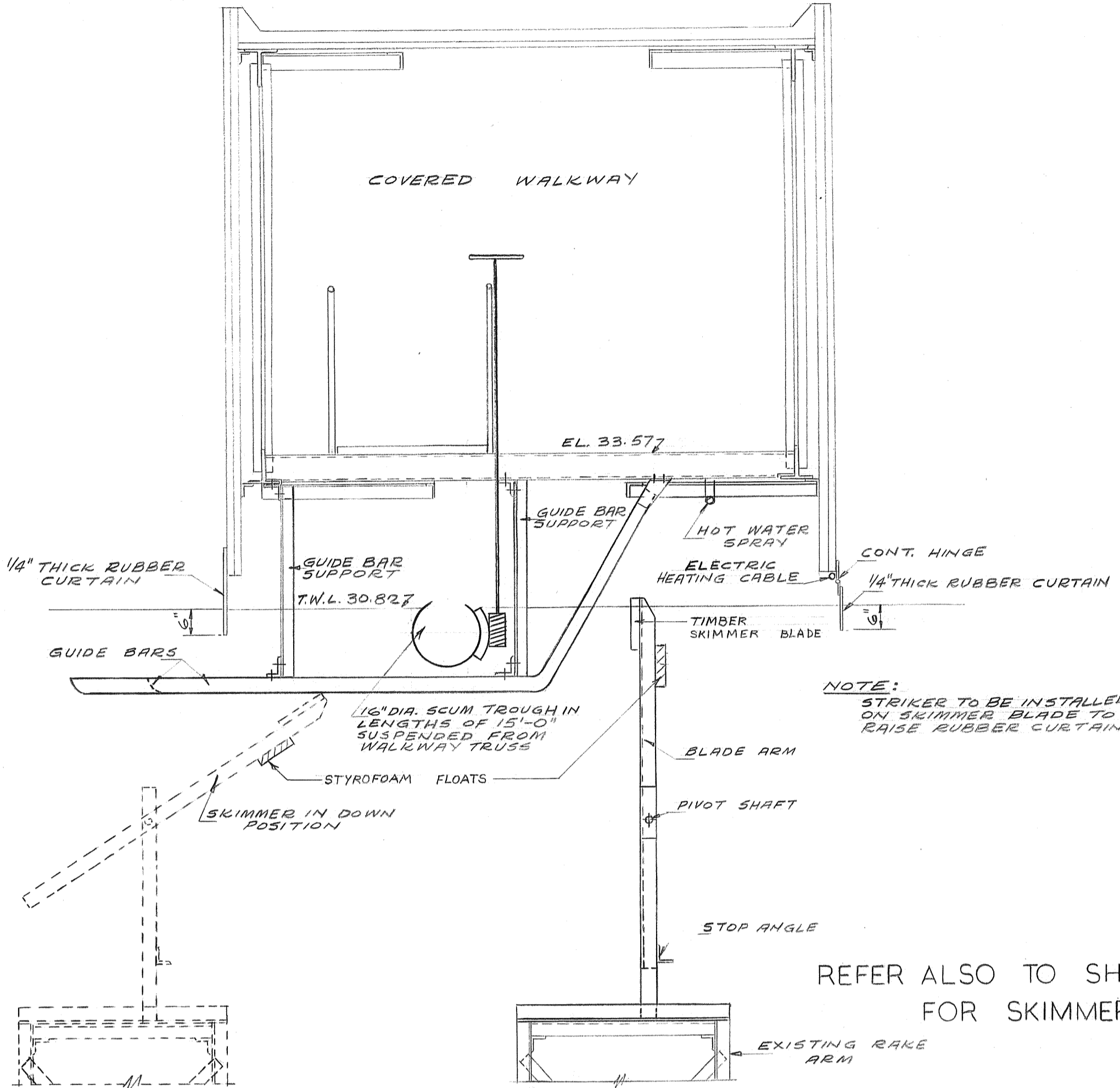


PART PLAN OF 115'-0" DIA TANK
1/8" = 1'-0"

PART PLAN OF 145'-0" DIA. TANK
1/8" = 1'-0"

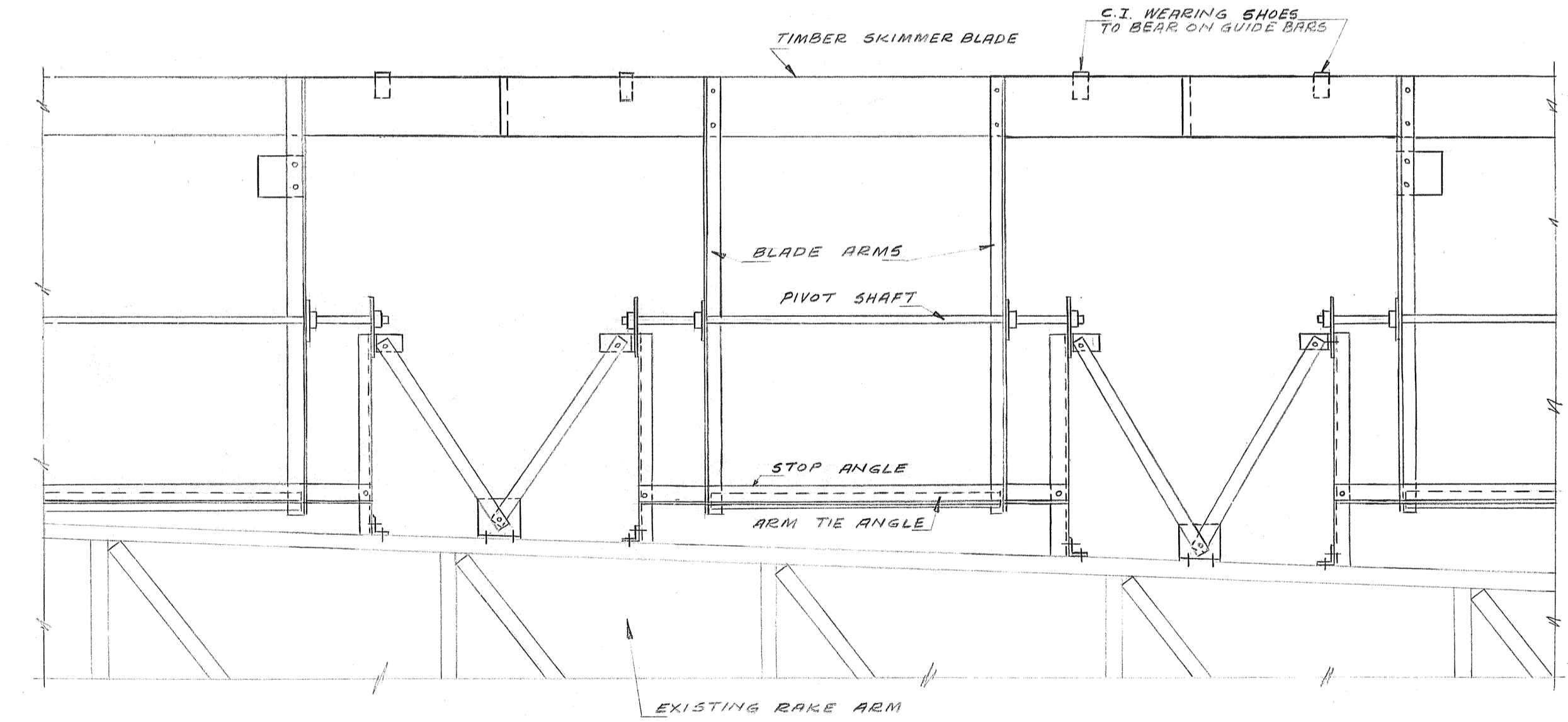


SECTION E-E
1/8" = 1'-0"

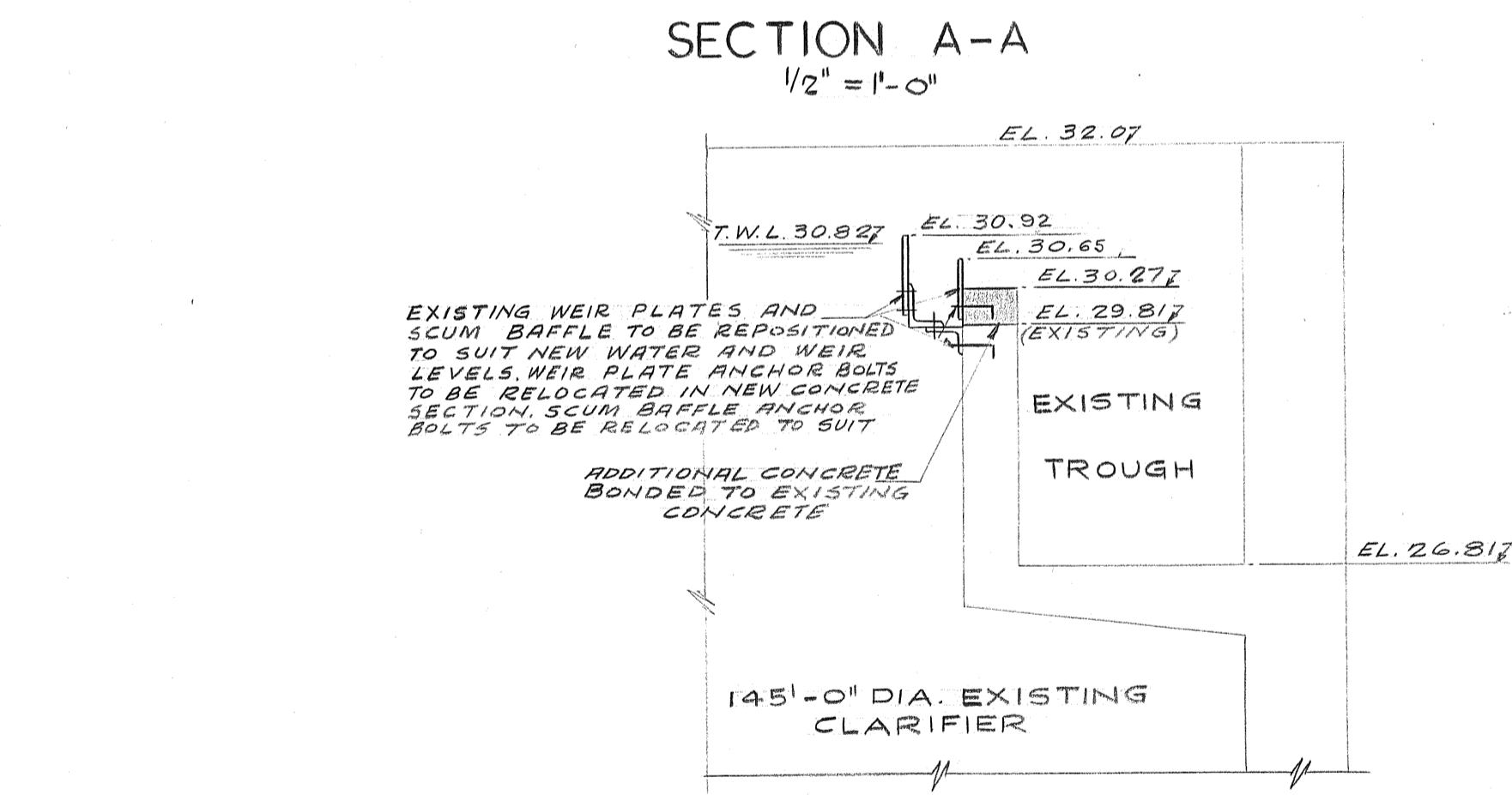


SECTION A-A
1/2" = 1'-0"

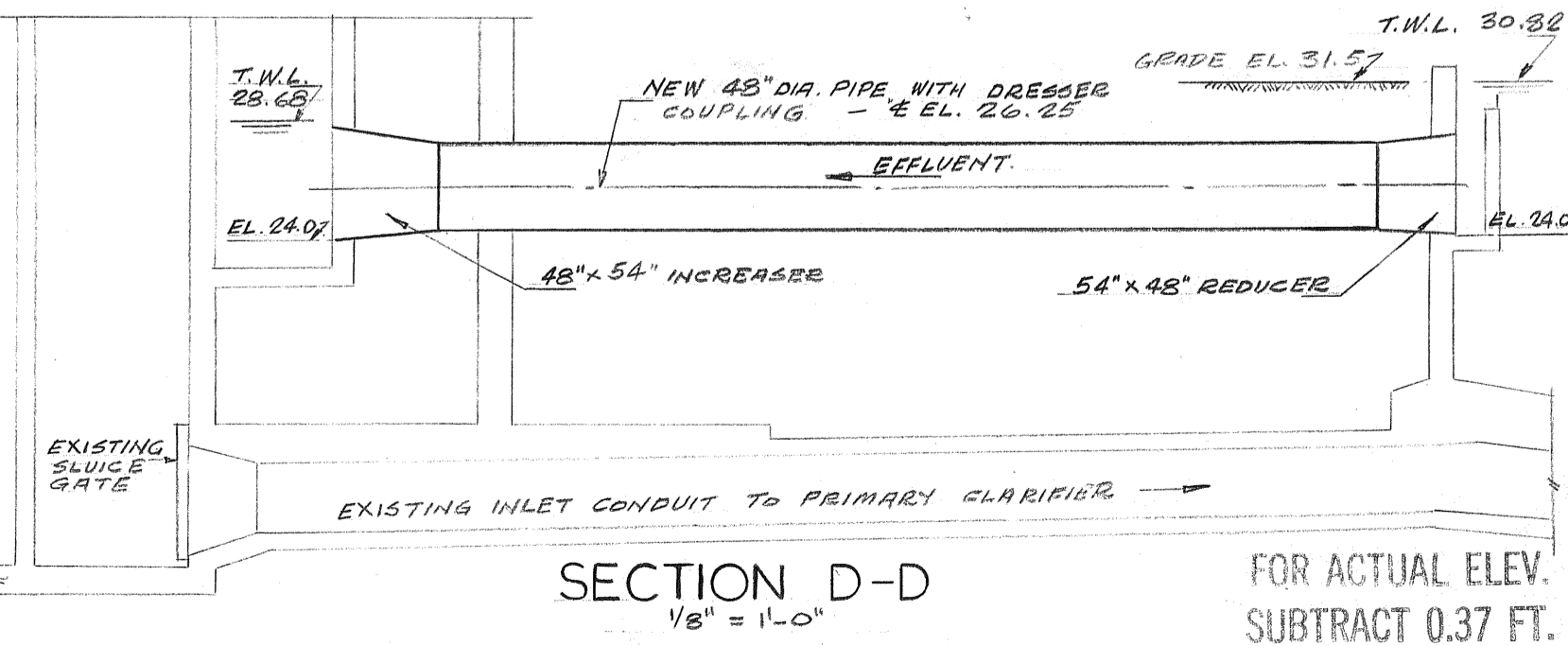
REFER ALSO TO SHOP DWG. 102-P-5 FOR SKIMMER DETAILS



TYPICAL LONGITUDINAL SECTION
1/2" = 1'-0"

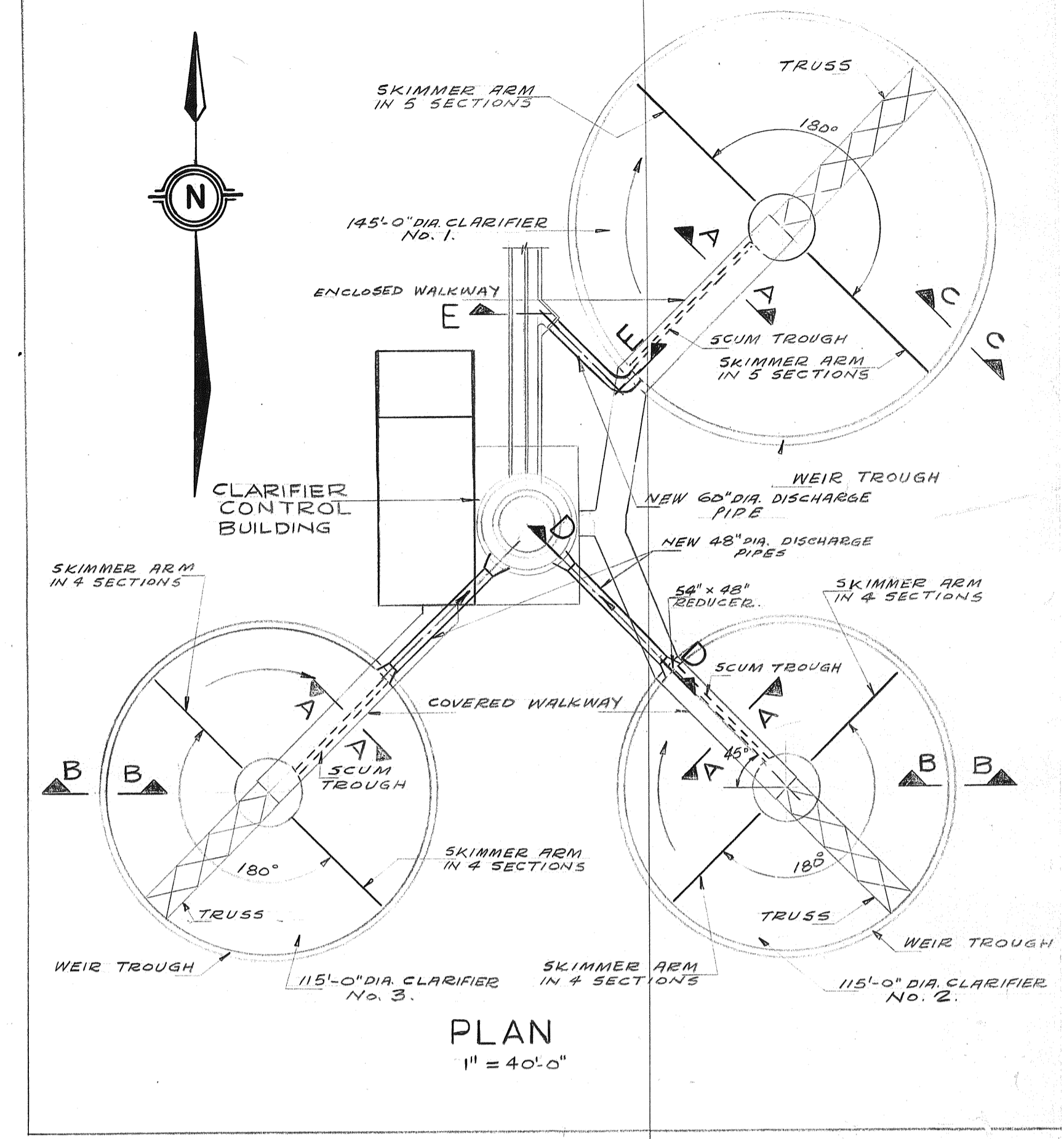


SECTION C-C
1/2" = 1'-0"

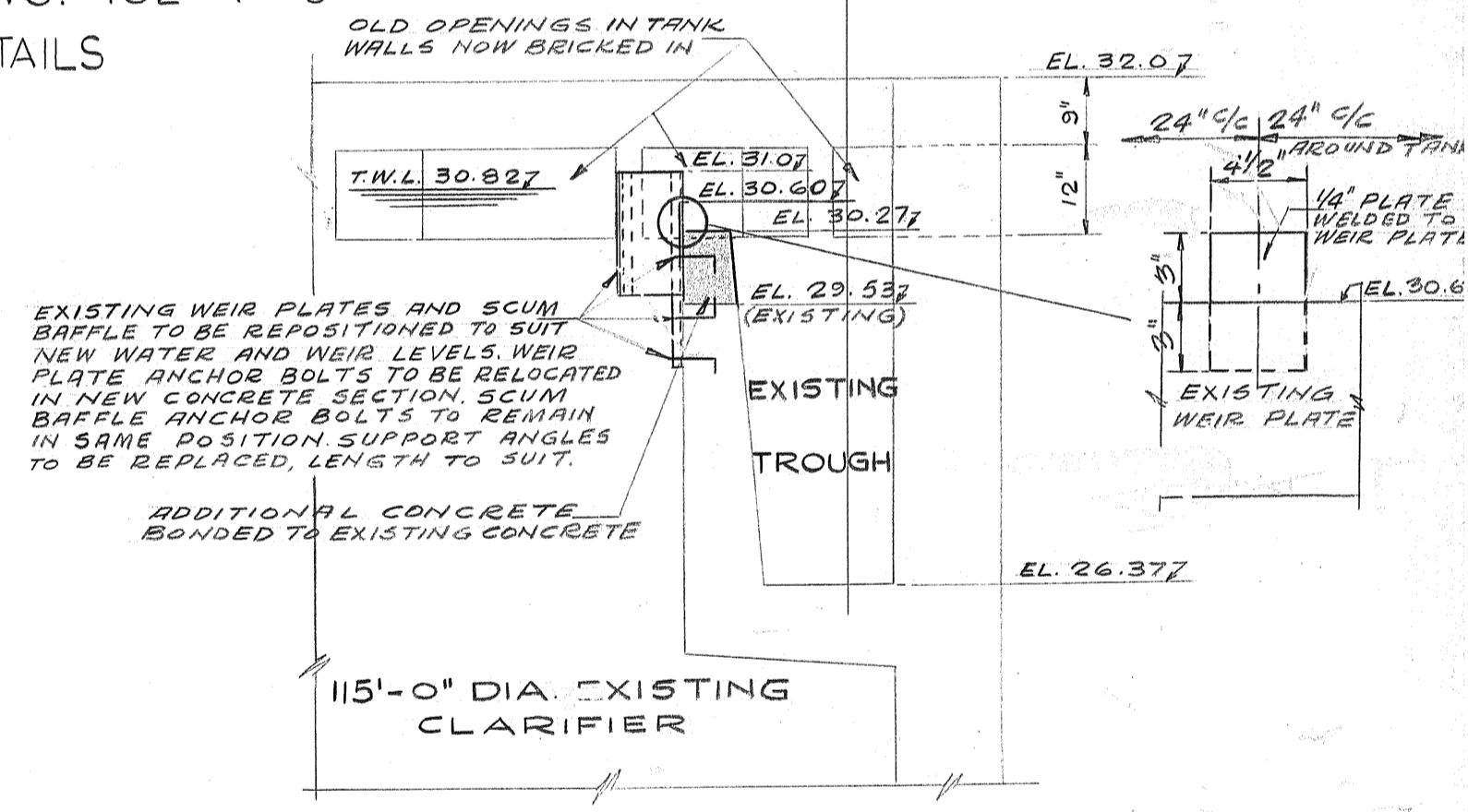


SECTION D-D
1/8" = 1'-0"

FOR ACTUAL ELEV. SUBTRACT 0.37 FT.

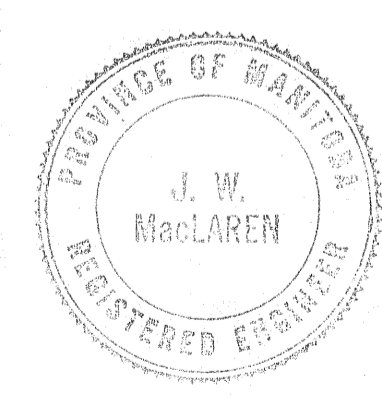


PLAN
1" = 40'-0"



SECTION B-B
1/2" = 1'-0"

| REVISIONS | | |
|-----------|------|--------|
| No. | DATE | DETAIL |
| | | |
| | | |
| | | |



THE METROPOLITAN CORPORATION OF GREATER WINNIPEG
WATERWORKS AND WASTE DISPOSAL DIVISION

NORTH END SEWAGE TREATMENT PLANT
CONTRACT A - CLARIFIER CONTROL BUILDING - MECHANICAL CLARIFIER MECHANISMS

| | | | |
|---|----------|--|-----|
| APPROVED <i>J.F. MacLaren</i> JAMES F. MACLAREN LIMITED ENGINEERS TORONTO | | APPROVED <i>J. Penman</i> J. PENMAN ENGINEER OF WASTE DISPOSAL | |
| W.L. WARDROP ASSOCIATES (MANAGEMENT) LIMITED ENGINEERING CONSULTANTS WINNIPEG | | APPROVED <i>W.L. Wardrop</i> W.L. WARDROP ASSOCIATES (MANAGEMENT) LIMITED ENGINEERING CONSULTANTS WINNIPEG | |
| DATE | SCALE | DWG. No. | OF |
| MARCH 11, 1963 | AS SHOWN | 94 | 217 |

AUG 11, 1966
AS BUILT

FILE # NR 10302

FILE 530-D-4632