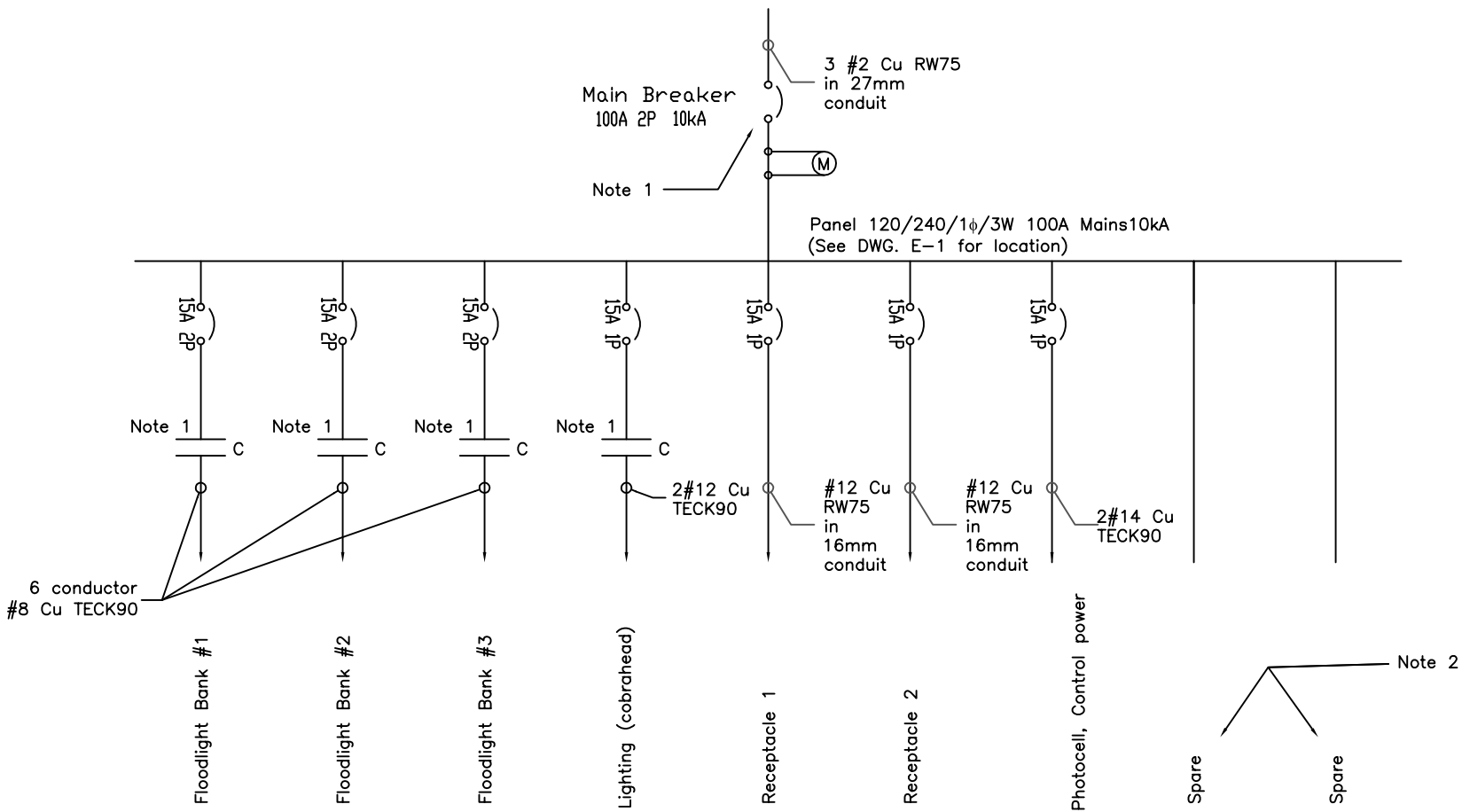


SYMBOL SCHEDULE	
	Contactor
	Contactor contact
	Breaker
	Switch
	Meter
	Photocell

Note:

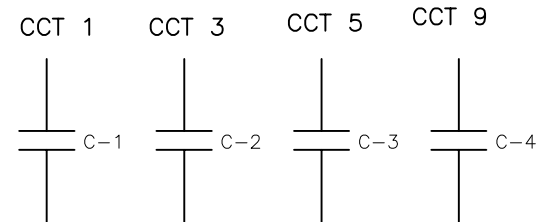
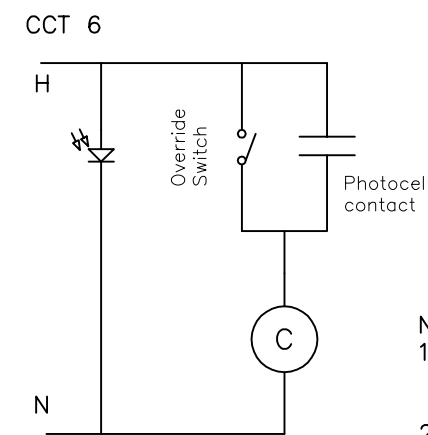
1. Main breaker, breakers for floodlights and cobrahead to be lockable in "OFF" position.
2. Provide coverplates for spares.



**1** Single Line  
**E-2** SCALE: N.T.S.

Panel 120/240/1 $\phi$ /3w 100A Mains 10 kA									
Description	CCT	Pwr. (W)	Brk. A	L1	L2	Brk. A	Pwr. (W)	CCT	Description
Lighting Bank 1	1	2160	15-2p			15-1p	600	7	Receptacle 120V
	2					15-1p	600	8	Receptacle 120V
Lighting Bank 2	3	2160	15-2p			15-1p	100	9	Cobrahead light
	4					15-1p	50	10	Photocell, controls
Lighting Bank 3	5	2160	15-2p					11	Spare
	6							12	Spare

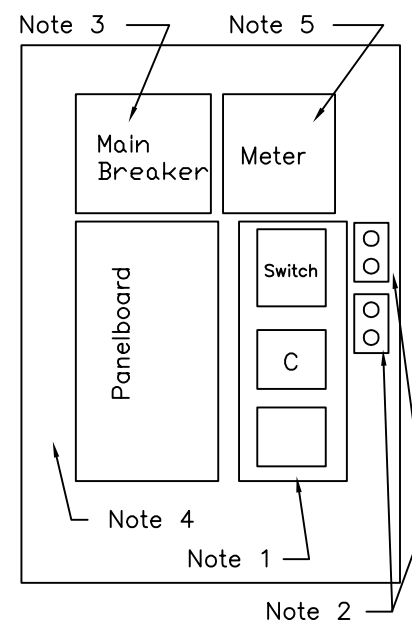
**2** Panelboard Schedule  
**E-2** SCALE: N.T.S.



NOTES:

1. Lighting contactors shall be 15A 4pole and suitable for HID load.
2. Lighting shall be controlled via photocell/lighting contactor with over-ride switch for photocell.

**3** Lighting Control  
**E-2** SCALE: N.T.S.



NOTES:

1. The Contractor shall provide enclosure for lighting contactors and photocell over-ride switch. Enclosure shall be NEMA 3R rated, lockable and sized large enough to accommodate future 4-pole contactor. All breakers, contactors, and switches to be labeled as to their function.
2. The Contractor shall provide two (2) weatherproof receptacles, each on a dedicated circuit for block heaters. Receptacles to be duplex "U" ground type, rated 15A, 125V, specification grade 5262, Hubbell, P&S, ArrowHart. Cover plates to be gasketed, weatherproof cast, P&S CA8-GV.
3. Main breaker to be enclosed in NEMA 3R enclosure and lockable in "OFF" position.
4. Backboard panel 1200mmx2400mm (4'x8') to be securely fastened to the pole. See specification E-6.
5. 100A Meter socket for utility metering.
6. All backboard wiring to be in weatherproof conduit.

**4** Distribution/Backboard Layout  
**E-2** SCALE: N.T.S.

THE CITY OF WINNIPEG  
PUBLIC WORKS DEPARTMENT



PROJECT:

Snow Disposal Site - Wilkes Ave

SHEET TITLE

Electrical Distribution

ENG. STAMP

PROJECT NO.

106-2007

DRAWN BY:

VC

CHECKED BY:

GWA

APPROVED BY:

GWA

SCALE:

E-2

DATE:

25 June, 2007

DWG. NO.

E-2

REV.

0