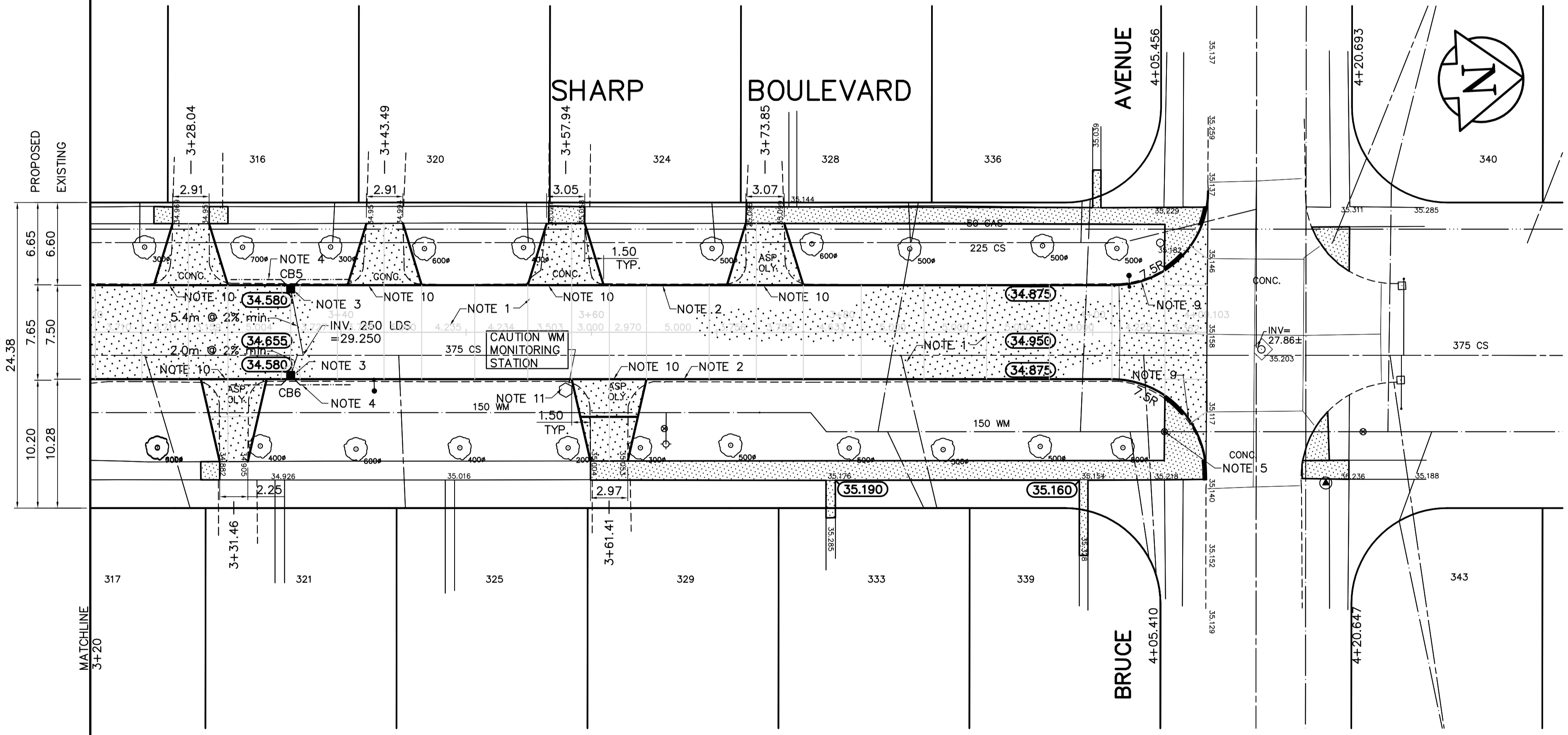


PAVEMENT RECONSTRUCTION SECTION

DESCRIPTION	RIM	INVERT			
		NORTH	SOUTH	EAST	WEST
CB 5	34.580			32.980	
CB 6	34.580				32.980



REFERENCE NOTES

- A. PAVEMENT DIMENSIONS ARE TO BACK OF CURB
- B. ADD 200.000 TO OBTAIN GEODETIC DATUM
- C. BASELINE IS CENTRE LINE NEW PAVEMENT
- D. PROPERTY LINES OBTAINED FROM CITY OF WINNIPEG L.B.I.S., AND NO SCALE FACTOR WAS APPLIED
- E. EARTH TECH FIELD BOOK NO. 4527

CONSTRUCTION NOTES

1. REMOVE EXISTING PAVEMENT AND CONSTRUCT 150mm REINFORCED CONCRETE PAVEMENT
2. CONSTRUCT NEW CONCRETE BARRIER CURB 180mm HT (SEPARATE)
3. INSTALL NEW CURB AND GUTTER INLET c/w 1800mm CATCH BASIN (SD024) AND CONNECT NEW 250mm LEAD TO EXISTING COMBINED SEWER
4. INSTALL 150mm SUBDRAIN
5. ADJUST EXISTING WATER VALVE TO GRADE
6. ADJUST EXISTING MANHOLE/CATCH BASIN TO GRADE
7. ABANDON EXISTING DRAINAGE INLET
8. REMOVE EXISTING CATCH BASIN
9. CONSTRUCT NEW MODIFIED BARRIER CURB (INTEGRAL)
11. ADJUST EXISTING CATHODIC PROTECTION MONITORING STATION BOX



150 mm W.M.	WATERMAIN	150 mm W.M.	HYDRO	HYDRO	PROPOSED	EXISTING	LEGEND - PROFILE	PROPOSED
○	HYDRANT	+	M.T.S.	—	×	○	NORTH/WEST GUTTER	—
○	VALVE	○	CONCRETE	—	○	○	SOUTH/EAST GUTTER	—
○	LAND DRAINAGE SEWER	○	ASPHALT	—	○	○	N/W PROPERTY LINE	—
○	WASTEWATER SEWER	○	PROPERTY LINE	—	○	○	S/E PROPERTY LINE	—
○	MANHOLE	○	SURVEY BAR	—	○	○		—
○	CATCH BASIN	○	ELEVATION	—	○	○		—
○	CURB INLET	○	TREE	—	○	○		—
○	JUNCTIONS	○	SIDEWALK RAMP	—	○	○		—
○	TEST HOLE (07-R-03)	○	CONCRETE SIDEWALK	—	○	○		—
○	GAS	○	FENCE	—	○	○		—

LOCATION APPROVED UNDERGROUND STRUCTURES

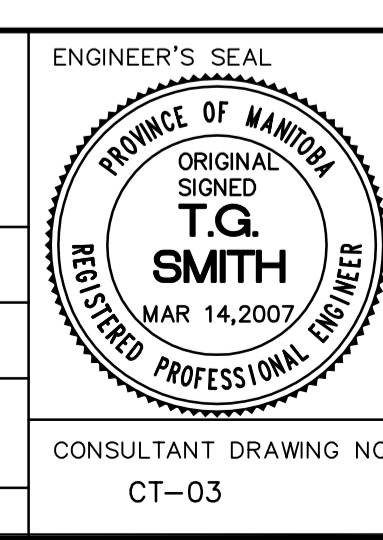
SUPV. U/G STRUCTURES COMMITTEE DATE

NOTE:
LOCATION OF UNDERGROUND STRUCTURES AS SHOWN ARE BASED ON THE BEST INFORMATION AVAILABLE. BUT NO GUARANTEE IS GIVEN THAT ALL EXISTING UTILITIES ARE SHOWN OR THAT THE GIVEN LOCATIONS ARE EXACT. CONFIRMATION OF EXISTENCE AND EXACT LOCATION OF ALL SERVICES MUST BE OBTAINED FROM THE INDIVIDUAL UTILITIES BEFORE PROCEEDING WITH CONSTRUCTION.

B.M. 39-061 N.E. Cor. Mount Royal Rd. and Bruce Ave., 10ft. on top of 0.5m dia. x 2.4m iron pipe, 4.5m W. of E.L. ELEV. 236.446

EarthTech
A Tyco International Ltd. Company

DESIGNED BY	RC	CHECKED BY	BC/TGS
DRAWN BY	RC	APPROVED BY	
HOR. SCALE:	1:250	RELEASED FOR CONSTRUCTION BY:	
VERTICAL:	1:10	DATE	2007/02/16



THE CITY OF WINNIPEG
PUBLIC WORKS DEPARTMENT
ENGINEERING DIVISION

SHARP BOULEVARD
LODGE AVENUE TO BRUCE AVENUE

PAVEMENT RECONSTRUCTION
PLAN/PROFILE
STATION 3+20 TO BRUCE AVENUE

CITY DRAWING NUMBER
SHEET 3 OF 3

CONSULTANT DRAWING NO. CT-03