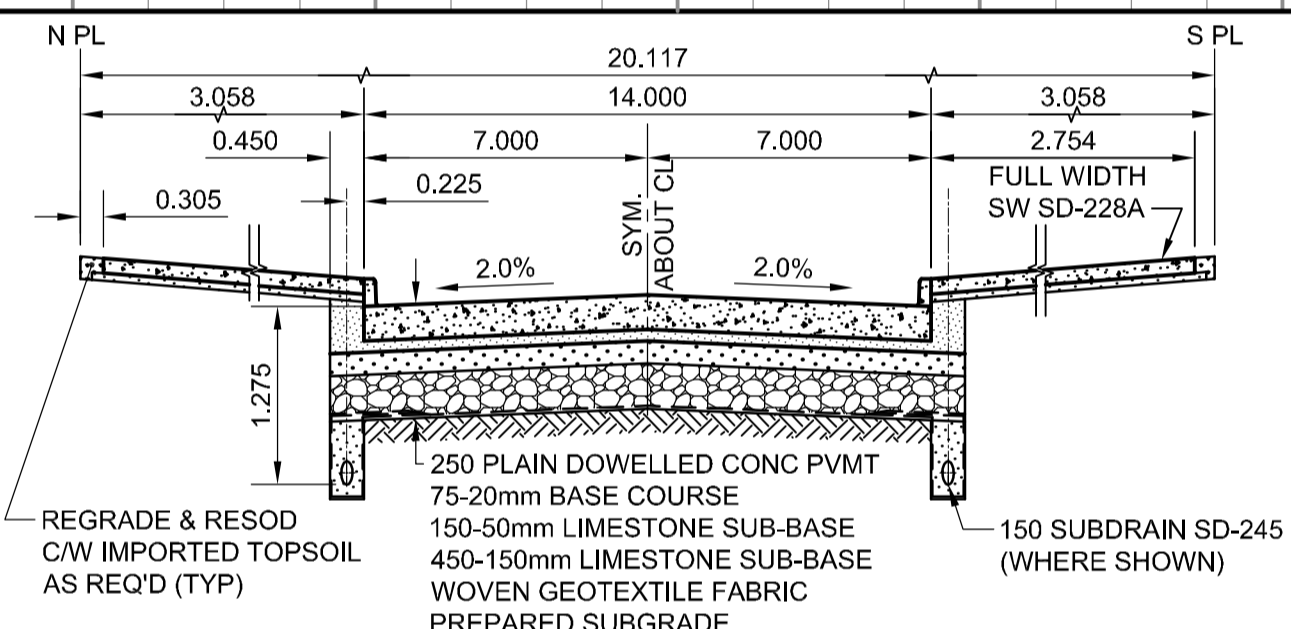
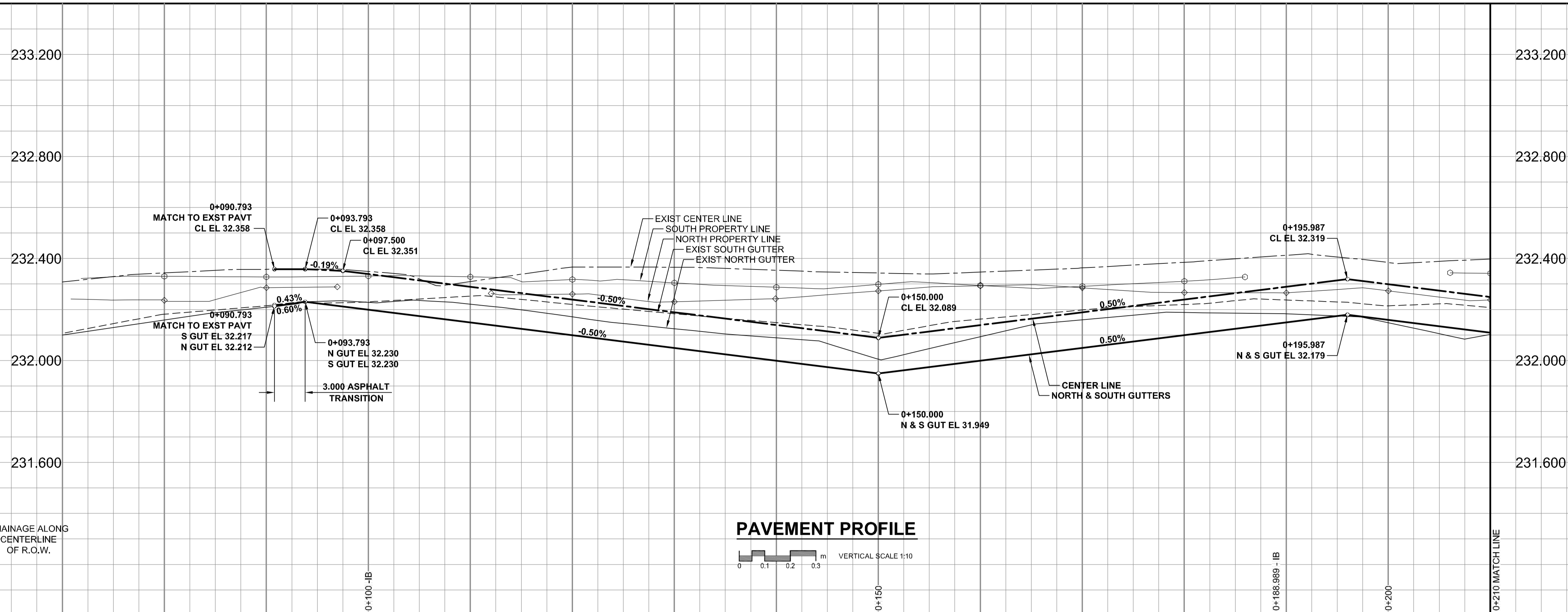


A1 SIZE 23.4" x 33.1" (594mm x 841mm)

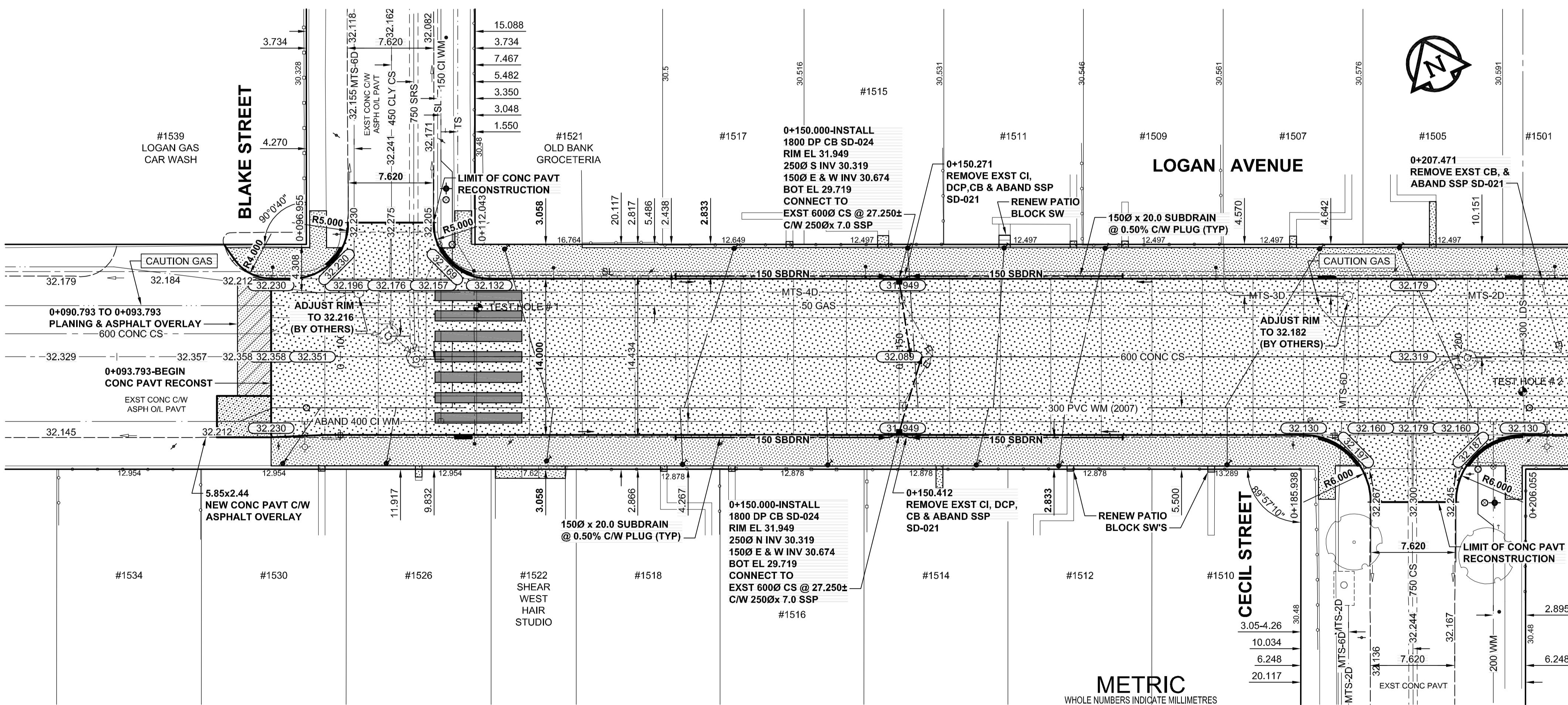
PLOT: 07/03/20 2:07:31 PM

UMA AECOM REVIEW DRFT CHK
UMA FILE NAME: 0265-394-00_01-CT1002_RX.dwg Saved By: cooperk

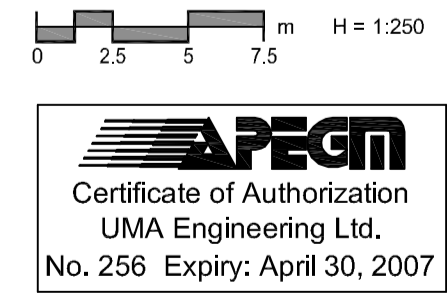


NOTES

1. ADJUST MH AND CB RIMS TO NEW GRADES.
2. LAMP STANDARDS, HYDRO POLES, AND ANCHORS MAY REQUIRE TEMPORARY SUPPORT/REMOVAL OR REPLACEMENT AT THE CONTRACTOR'S EXPENSE.
3. CONTRACTOR SHALL TAKE PRECAUTIONARY STEPS TO PROTECT EXISTING BOULEVARD TREES WITHIN THE LIMITS OF CONSTRUCTION FROM DAMAGE FROM CONSTRUCTION ACTIVITIES AS OUTLINED IN THE SPECIFICATIONS.
4. CONTRACTOR SHALL REGRADE/RENEW EXST. PRIVATE SIDEWALKS TO LIMITS AS SHOWN. RENEW SIDEWALKS WITH CONCRETE UNLESS NOTED OTHERWISE.
5. THE LOCATION OF ALL SERVICES TO BE CONFIRMED IN THE FIELD BY THE CONTRACTOR.
6. ADD 200.000m TO ABBREVIATED ELEVATIONS TO OBTAIN GEODETIC ELEVATIONS.
7. CATCH BASINS SD-024 C/W AP-008 & AP-009.



METRIC
WHOLE NUMBERS INDICATE MILLIMETRES
DECIMALIZED NUMBERS INDICATE METRES



BID OPPORTUNITY NO. 151-2007

—	○	MANHOLE	●
—	□	CATCH BASIN / CATCH PIT	■
—	△	CURB INLET WITH BOX	▲
—	○	TREE	○
—	⊕	TEST HOLE	⊕
—	—	PROPERTY LINE	—
—	—	SURVEY BAR	—
—	—	FENCE	—
—	—	BOC/EOPAVT	—
—	—	ELEVATION	(33.100)
—	—	TRAFFIC SIGN	—
—	—	CONCRETE PAVEMENT	—
—	—	ASPHALT PAVEMENT	—
—	—	CONC. SIDEWALK/MEDIAN	—
—	—	PAVING STONE	—
—	—	GRAVEL	—
—	—	RAMP CURB	—
—	—	PAVT PLANING/REMOVAL	—

LOCATION APPROVED
UNDERGROUND STRUCTURES
INFORMATION AVAILABLE BUT NO
SUPR. U&S STRUCTURES DATE
COMMITTEE

NOTE:
LOCATION OF UNDERGROUND STRUCTURES
AS SHOWN ARE BASED ON THE BEST
INFORMATION AVAILABLE BUT NO
GUARANTEE IS GIVEN THAT ALL EXISTING
UTILITIES ARE SHOWN OR THAT THE GIVEN
LOCATIONS ARE EXACT. CONFIRMATION OF
EXISTENCE AND EXACT LOCATION OF ALL
SERVICES MUST BE OBTAINED FROM THE
INDIVIDUAL UTILITIES BEFORE PROCEEDING
WITH CONSTRUCTION.

BM 36-025
ELEV 232.913m

DESIGNED BY: *WR*
DRAWN BY: *DR*

CHECKED BY: *RFB*
APPROVED BY: *RFB*

RELEASD FOR CONSTRUCTION
DATE: 07/03/19

ISSUED FOR CONSTRUCTION 07/03/23 D/D
NO. REVISIONS Y/YMMDD BY

UMA AECOM

PROFESSIONAL'S SEAL
PROVINCE OF MANITOBA
REGISTERED PROFESSIONAL ENGINEER
R.P. BRUCE
CONSULTANT DRAWING NO.
0265-394-00_01-CT1002_RX.dwg

THE CITY OF WINNIPEG
PUBLIC WORKS DEPARTMENT
TRANSPORTATION ENGINEERING DIVISION

**LOGAN AVENUE
BLAKE STREET TO
WESTON STREET
STREET RECONSTRUCTION**
HORIZONTAL AND VERTICAL ALIGNMENT
FROM STA 0+093.793 TO STA 0+210

CITY DRAWING NUMBER
P-3273-02
SHEET 2 OF 7
DRAWING No. 02 REV 0