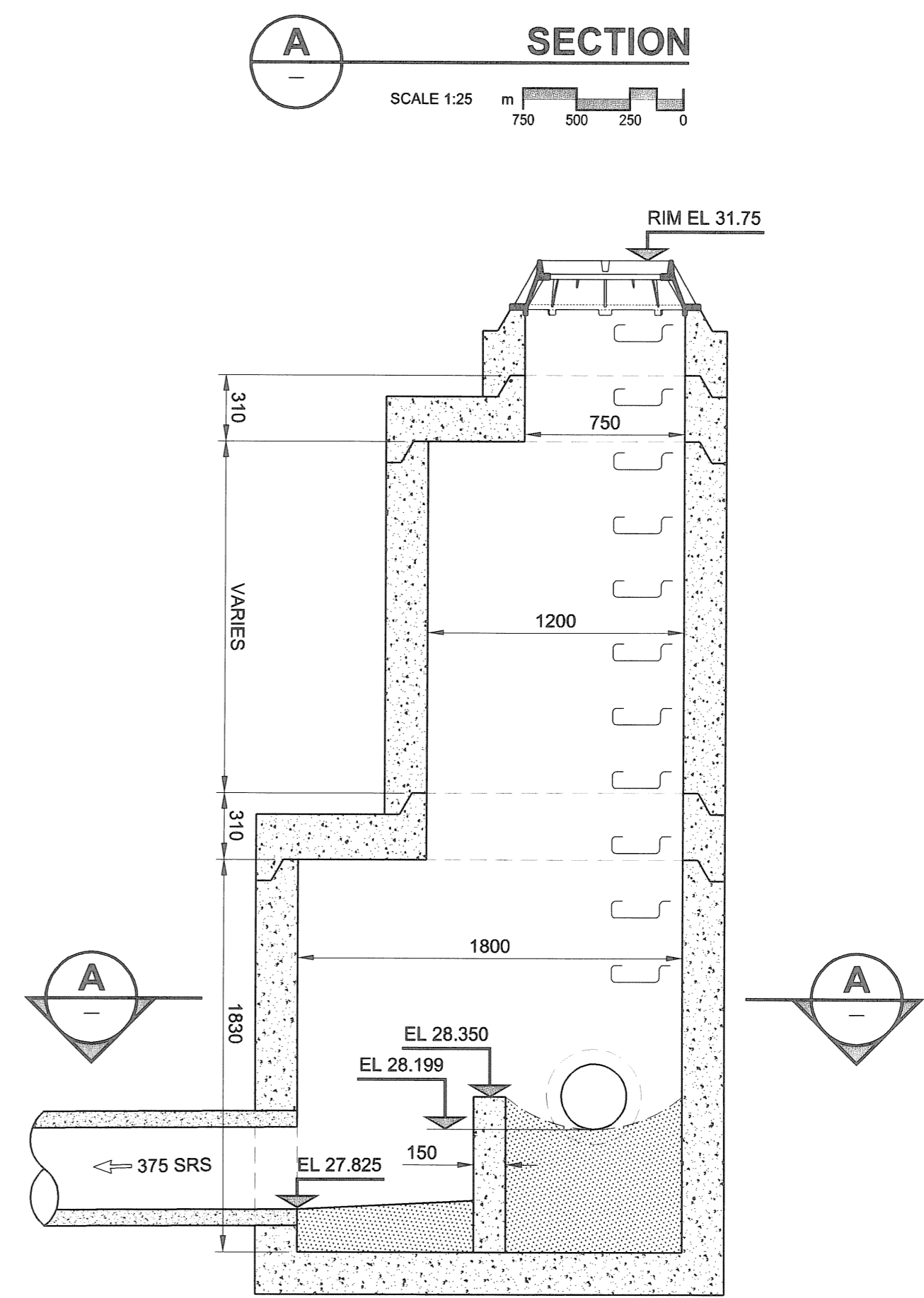
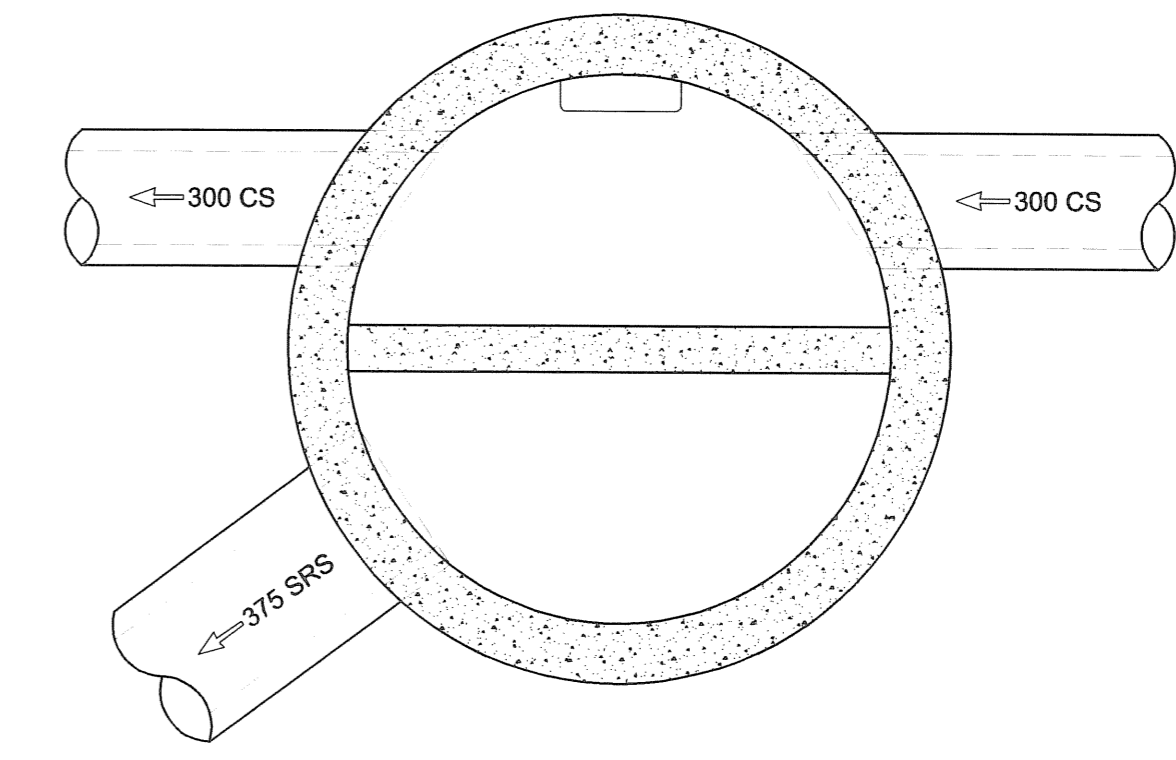
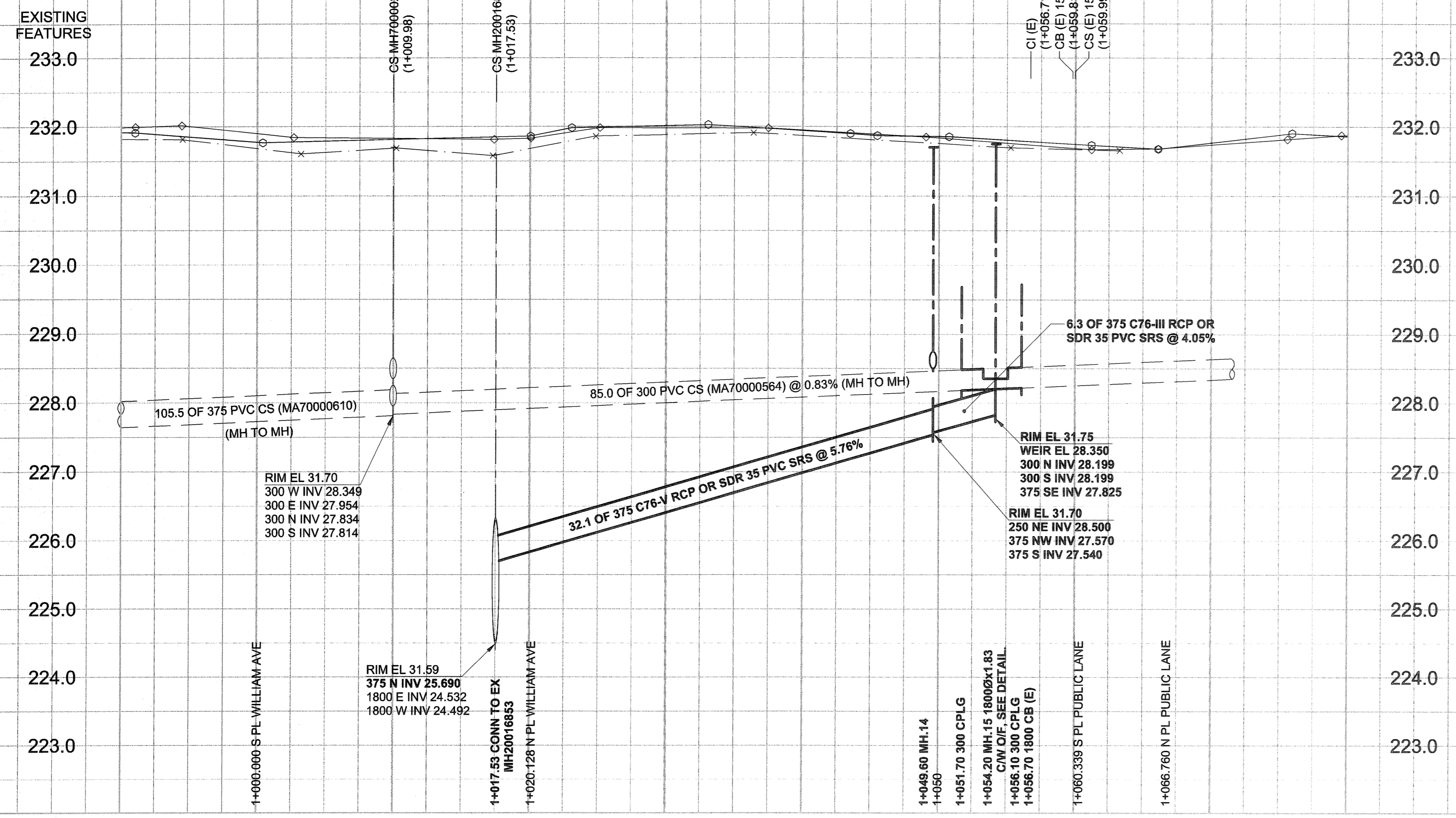
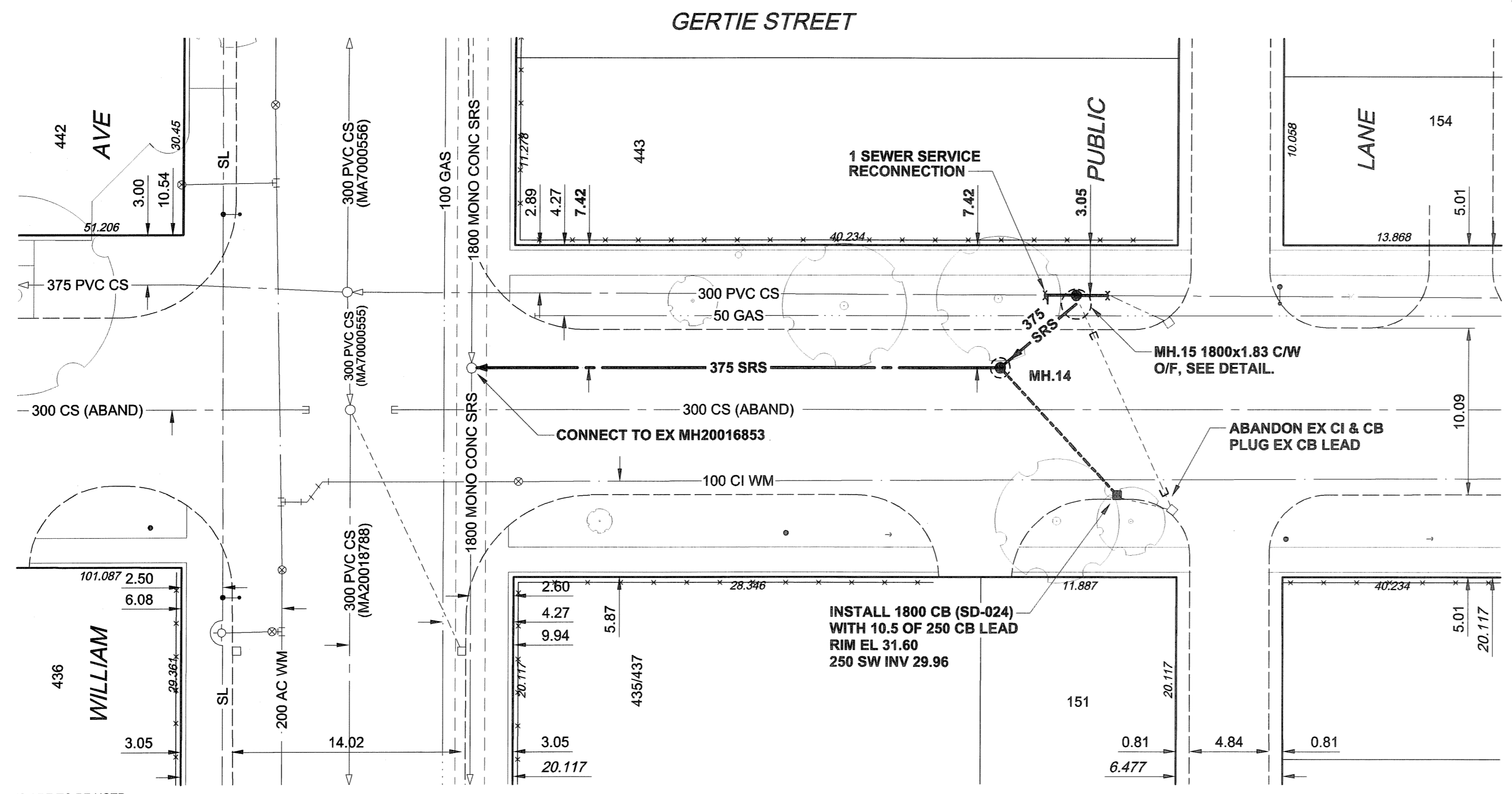


D SIZE 22" x 34" 559mm x 864mm

PLOT: 07/04/10 3:35:55 PM



- CONSTRUCTION NOTES:
- FOR DETAILED TEST HOLE INFORMATION, SEE SPECIFICATION.
 - THE LOCATION OF ALL SERVICES IS TO BE CONFIRMED IN THE FIELD.
 - INSTALL NEW SEWERS AND CATCHBASIN LEADS BY TRENCHLESS METHODS WHEREVER POSSIBLE.
 - RENEW/REHABILITATE CATCHBASINS & RENEW CATCHBASIN LEADS WHERE NOTED.



WARNING

IF POWER EQUIPMENT OR EXPLOSIVES ARE TO BE USED FOR EXCAVATION ON THIS PROJECT, THE CONTRACTOR MUST:

- NOTIFY THE GAS COMPANY OF THE PROPOSED LOCATION OF EXCAVATION.
- TAKE PRECAUTION TO AVOID DAMAGE TO GAS COMPANY INSTALLATIONS.

SEE PROVINCIAL REGULATION 140/92 FOR DETAILS

150 mm WM	WATERMAIN	150 mm WM	CURB STOP	150 mm WM	WATERMAIN	150 mm WM	LOCATION APPROVED
	HYDRANT		REDUCER		HYDRANT		UNDERGROUND STRUCTURES
	VALVE		COUPLING		VALVE		DATE
	LAND DRAINAGE SEWER						NOTE:
	WASTE WATER SEWER						LOCATION OF UNDERGROUND STRUCTURES AS SHOWN ARE BASED ON THE BEST INFORMATION AVAILABLE. BUT NO GUARANTEE IS GIVEN THAT ALL EXISTING UTILITIES ARE SHOWN OR THAT THE GIVEN LOCATIONS ARE EXACT. CONFIRMATION OF EXISTENCE AND EXACT LOCATION OF ALL SERVICES MUST BE OBTAINED FROM THE INDIVIDUAL UTILITIES BEFORE PROCEEDING WITH CONSTRUCTION.
	MANHOLE						
	CATCH BASIN						
	CURB INLET						
	CULVERT						
	PIPE ABANDONMENTS						
	SURVEY BAR						
EXISTING	LEGEND - PLAN	NEW	EXISTING	LEGEND - PLAN	NEW	EXISTING	LEGEND - PROFILE

LOCATION APPROVED UNDERGROUND STRUCTURES

SUPR. U/G STRUCTURES DATE COMMITTEE

NOTE: LOCATION OF UNDERGROUND STRUCTURES AS SHOWN ARE BASED ON THE BEST INFORMATION AVAILABLE. BUT NO GUARANTEE IS GIVEN THAT ALL EXISTING UTILITIES ARE SHOWN OR THAT THE GIVEN LOCATIONS ARE EXACT. CONFIRMATION OF EXISTENCE AND EXACT LOCATION OF ALL SERVICES MUST BE OBTAINED FROM THE INDIVIDUAL UTILITIES BEFORE PROCEEDING WITH CONSTRUCTION.

BM 35-044	S.W. Cor. William Ave. & Ellen St., Tblt in most Ely. Tynedall Stone foundation No. 110 Ellen St. (Victoria Albert School), 1.3m S. 0.2m below brick of N.E. Cor. of school.
ELEV 232.314m	
0	ISSUED FOR CONSTRUCTION 07/04/10 KMB
NO.	REVISIONS YY/MM/DD BY

METRIC
WHOLE NUMBERS INDICATE MILLIMETRES
DECIMALIZED NUMBERS INDICATE METRES

UMA | AECOM

© 2005 UMA ENGINEERING LTD. ALL RIGHTS RESERVED.

DESIGNED BY	GEB/DME	CHECKED BY	
DRAWN BY	KMB	APPROVED BY	
HOR. SCALE	1:250	RELEASED FOR CONSTRUCTION	
VERT. SCALE	1:50	DATE	07/04/10

APCGM
Certificate of Authorization
UMA Engineering Ltd.
No. 256 Expiry: April 30, 2007

PROFESSIONAL'S SEAL
PROVINCE OF MANITOBA

A. NAGY
REGISTERED PROFESSIONAL ENGINEER
CONSULTANT DRAWING NO. 08
D265-177-03

THE CITY OF WINNIPEG
WATER AND WASTE DEPARTMENT

ALEXANDER/BANNATYNE
COMBINED SEWER RELIEF
CONTRACT 3B

GERTIE STREET
WILLIAM AVENUE
25m SOUTH OF ELGIN AVENUE

SHEET 8 OF 11
CITY DRAWING NUMBER
LD-3488
REV 0

BID OPPORTUNITY NO. 167-2007