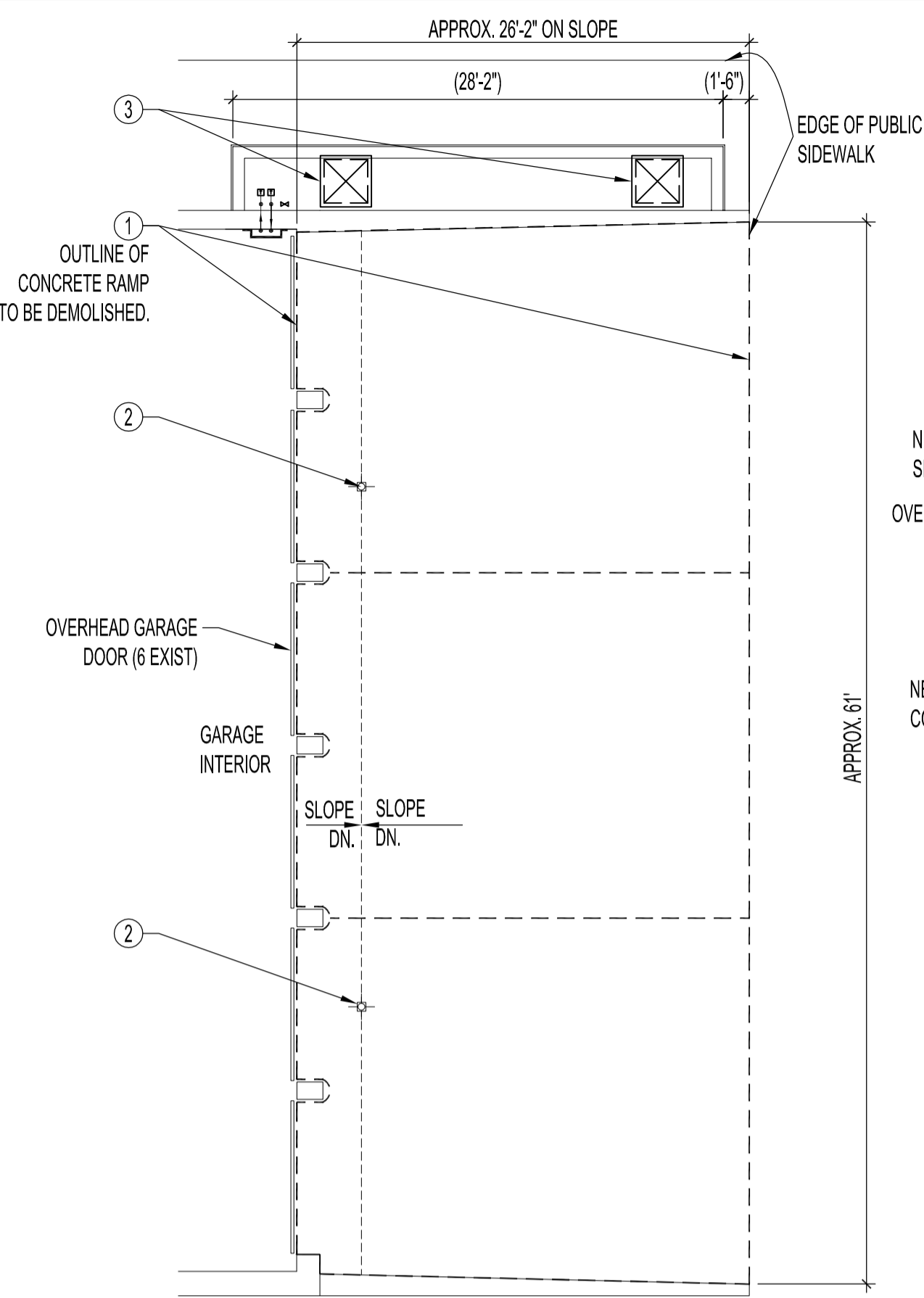
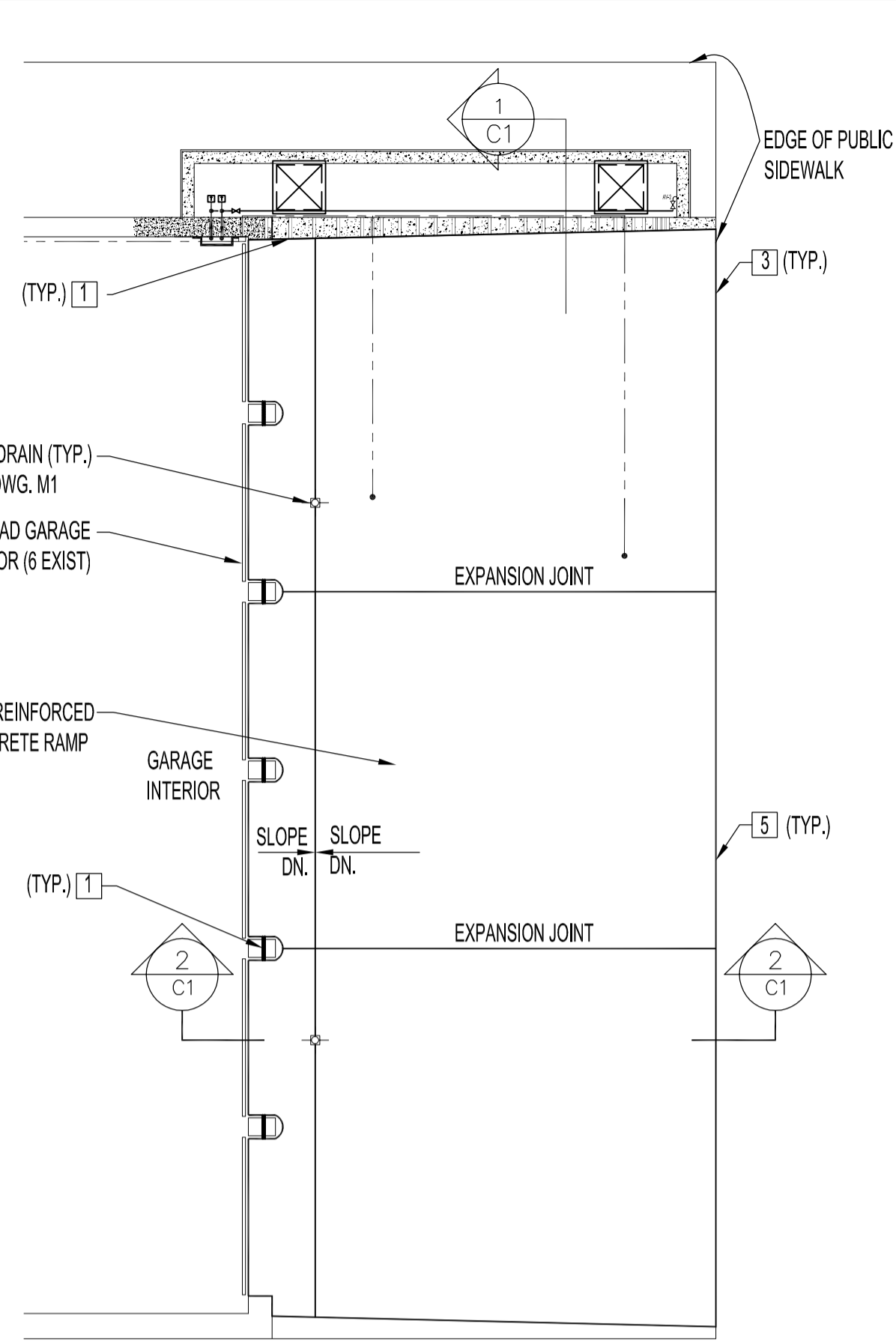


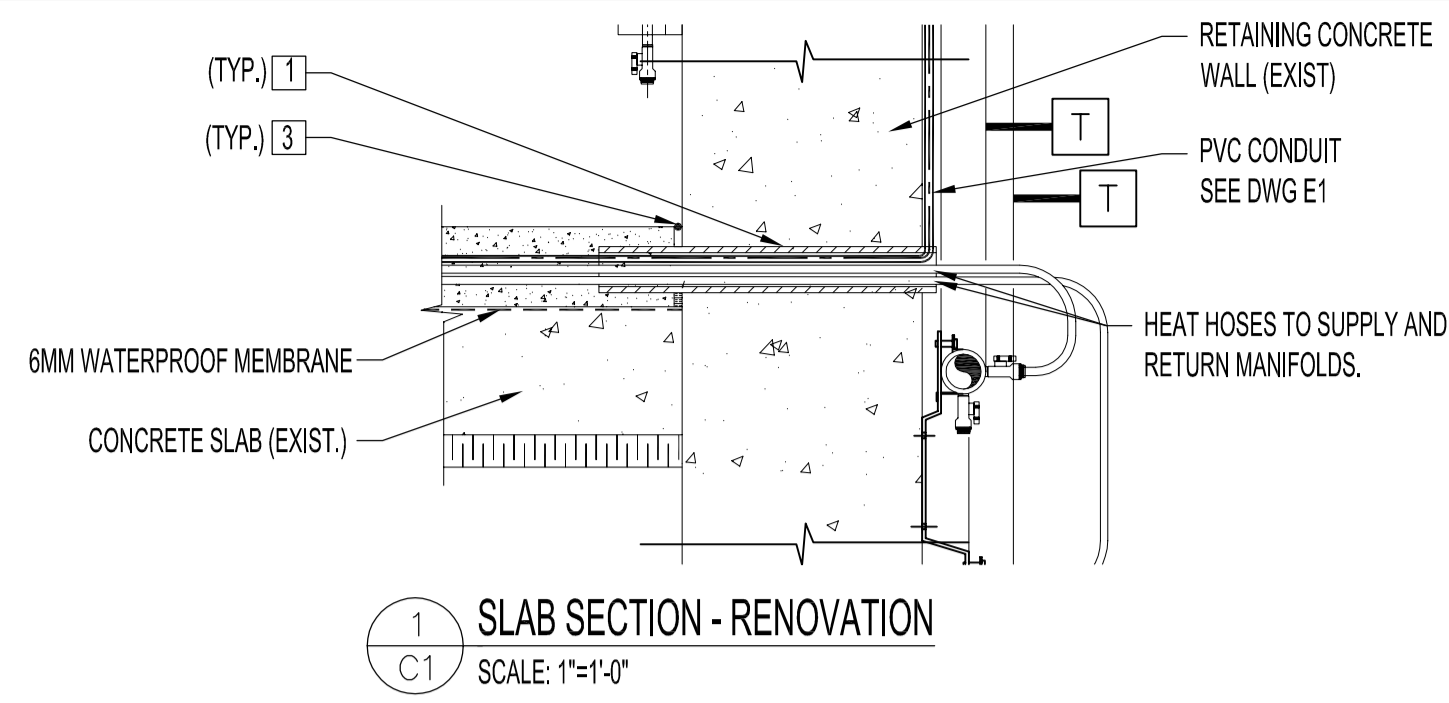
FILE NAME: 2005108w.dwgC1
 DATE: 20070309
 DESCRIPTION: PLAN VIEW, SECTIONS & DETAILS
 PROJECT No.: 2005-108
 ADDRESS: 227 PROVENCHER BLVD.



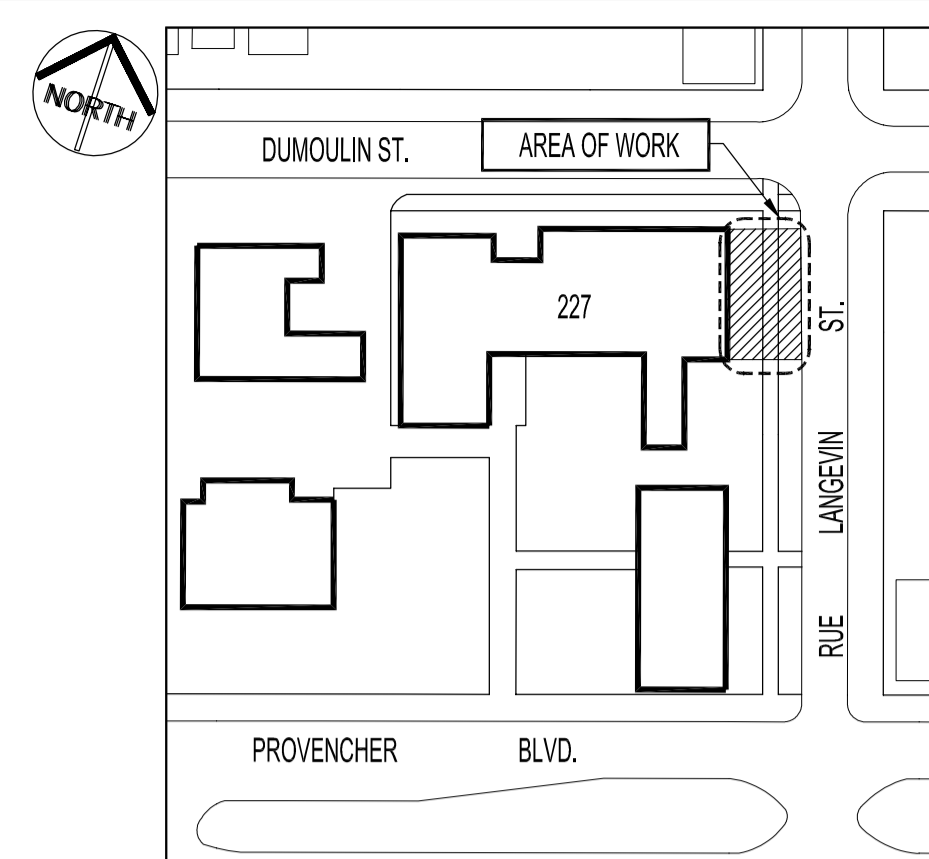
PLAN VIEW - EXTERIOR RAMP DEMOLITION
 SCALE: 1/8"=1'-0"



PLAN VIEW - EXTERIOR RAMP RENOVATION
 SCALE: 1/8"=1'-0"



SLAB SECTION - RENOVATION
 SCALE: 1"=1'-0"



KEY PLAN
 SCALE: N.T.S.

DEMOLITION NOTES:

- 1 REMOVE 5" REINFORCED CONCRETE TOPPING SLAB, HEATING HOSES, REBARS AND MEMBRANE FROM ENTIRE RAMP AREA.
- 2 REMOVE & DISCARD (2) EXISTING FLOOR DRAINS AND REPLACE WITH NEW. SEE DWG M1.
- 3 REMOVE & DISCARD (2) EXISTING ACCESS HATCH PANELS AND REPLACE WITH NEW. SEE "ACCESS HATCH DETAIL".

RENOVATION NOTES:
 (SUPPLY & INSTALL)

- 1 EXISTING CORED HOLES THROUGH PILASTERS & RETAINING WALL TO BE MAINTAINED. SUPPLY & INSTALL NEW "ARMAFLEX" INSULATION TO ACCOMMODATE NEW "ONIX" HEAT HOSE.
- 2 SUPPLY & INSTALL 15M EPOXY COATED DOWELS @ 18" O.C. TIE INTO EXISTING CONCRETE GARAGE FLOOR BOTH SIDES OF EXPANSION JOINTS. TYPICAL.
- 3 SUPPLY & INSTALL 1/2" DIA. ETHAFOAM BACKING ROD AND POLYURETHANE CAULK AROUND ENTIRE PERIMETER OF SLAB INCLUDING PILASTERS.
- 4 MAINTAIN ACCESS AROUND ALL EXISTING RECESSED LIGHT FIXTURES, PETCOCK, FLUSH VALVE AND ACCESS PANELS.
- 5 TOP OF NEW SLAB SHALL BE LEVEL WITH EXISTING PUBLIC SIDEWALK. PATCH WITH ASPHALT AS REQUIRED.
- 6 NEW COPPER SUPPLY HEADER & RETURN MANIFOLDS WITH NEW AUTO AIR VENTS. SEE M1.
- 7 NEW ALUMINUM ACCESS HATCH PANELS. SEE "ACCESS HATCH DETAIL".
- 8 CORE NEW HOLE IN EXISTING CONCRETE WALL TO ACCOMMODATE PVC CONDUIT. SEE DWG E1.
- 9 SNOW / ICE SENSOR & SOCKET IN CONCRETE TOPPING SLAB. SUPPLY & INSTALL AS PER MANUFACTURER'S INSTALLATION MANUAL. SEE DWG E1.
- 10 SPARE SNOW / ICE SOCKET & CONDUIT IN CONCRETE TOPPING SLAB FOR BACKUP SENSOR LOCATION. SUPPLY & INSTALL AS PER MANUFACTURER'S INSTALLATION MANUAL. SEE DWG E1.

NOTES :
 THESE DRAWINGS SHALL NOT BE SCALED.
 THE CONTRACTOR SHALL VISIT THE SITE AND SATISFY ONESELF ALL DIMENSIONS, DATUM, AND DETAILED INFORMATION SHOWN ARE CORRECT.
 ALL PRODUCTS AND MATERIALS TO BE USED AND INSTALLED SHALL CONFORM WITH MANUFACTURER'S SPECIFICATIONS & APPLICABLE CODES.
 THE CONTRACTOR SHALL BE RESPONSIBLE TO PATCH AND MAKE GOOD ALL EXISTING CONSTRUCTION AFFECTED BY THE REMOVAL OF ALL ITEMS FORMING THE PART OF THE RENOVATION WORK.
 ALL CONCRETE 32 MPa @ 28 DAYS, 5-7% AIR.
 TOPPING SLABS TO BE MOISTURE CURED FOR 4 DAYS AS SPECIFIED.
 DURING CONSTRUCTION 2 OVERHEAD DOORS & RAMPS SHALL BE ACCESSIBLE AT ALL TIMES.
 ALL DOWELS SHALL BE EPOXY COATED.
 ALL COMPONENTS SHOWN ARE TO BE SUPPLIED & INSTALLED, INCLUDING ELECTRICAL & CONTROLS.

DRAWING LIST	
SHEET No.	SHEET TITLE
C1	PLAN VIEW, SECTIONS & DETAILS
M1	PLAN VIEW, SECTION, DETAILS PIPING SCHEMATIC PLUMBING SPECIFICATIONS
E1	PARTIAL FLOOR PLAN, SECTION, ELECTRICAL SPECIFICATIONS

NO.	REVISION/DESCRIPTION	BY	DATE
SEALS			

DRAWN BY	CHECKED BY	APPROVED
RCPI/DTA	USER APPROVAL	

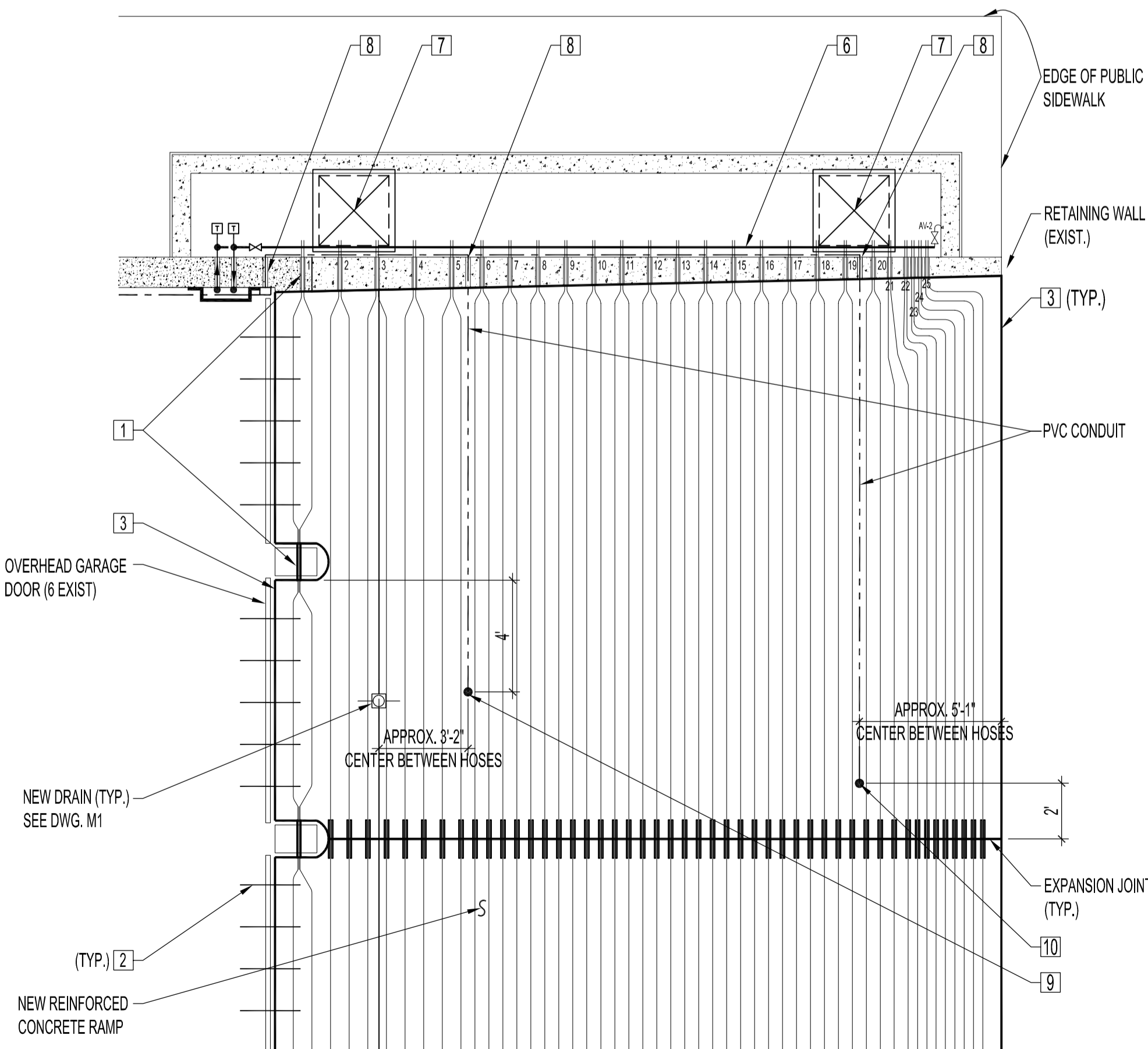
CITY OF WINNIPEG
 PLANNING, PROPERTY &
 DEVELOPMENT DEPARTMENT
 CIVIC ACCOMMODATIONS DIVISION
 300 - 65 GARRY ST. R3C 4K4

PROJECT
 DISTRICT 5 POLICE STATION
 REPLACEMENT OF CONCRETE RAMP
 SNOW MELT SYSTEM
 227 PROVENCHER BLVD.

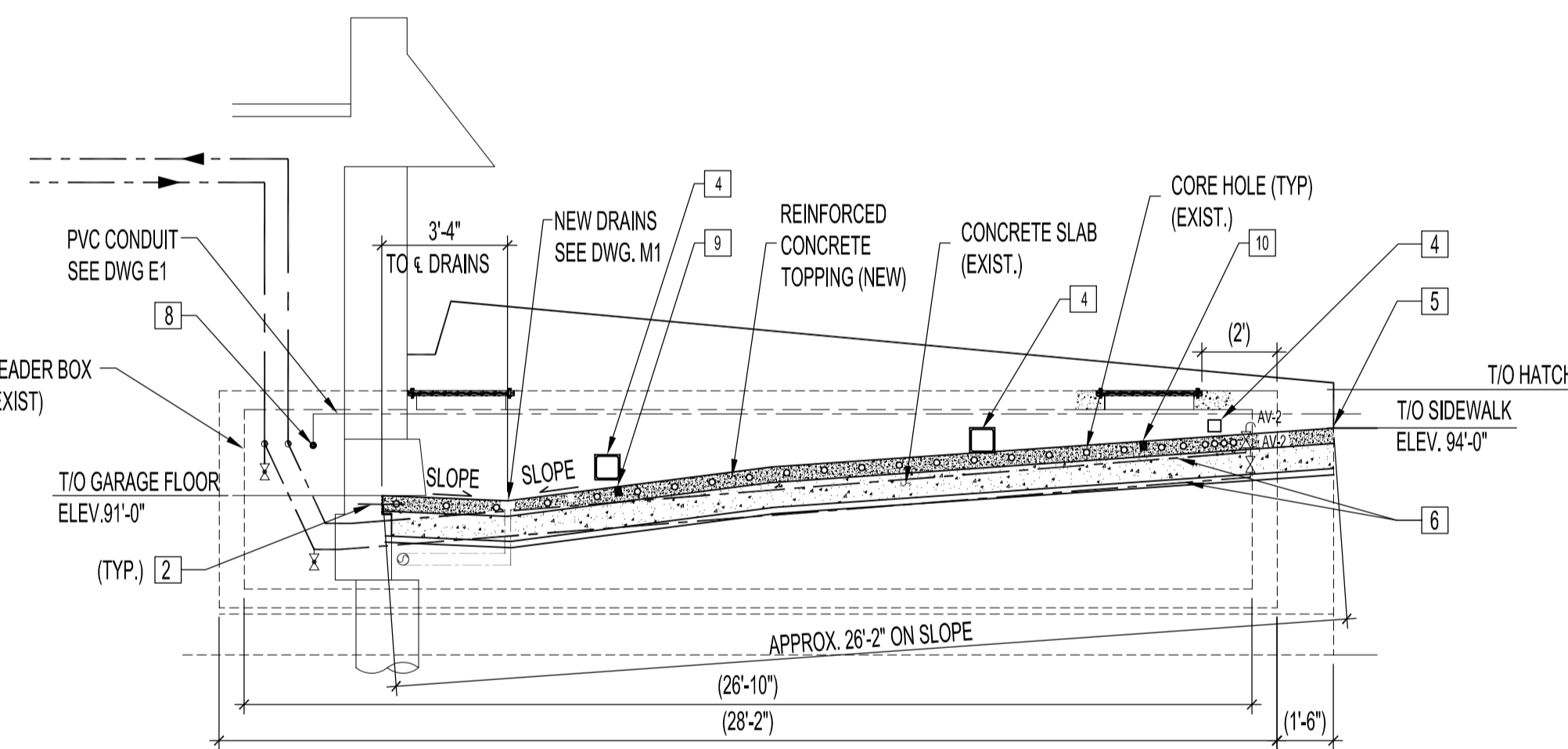
SHEET TITLE
 PLAN VIEW
 SECTIONS & DETAILS

SCALE	PROJECT NO.	SHEET NO.
AS NOTED	2005-108	C1

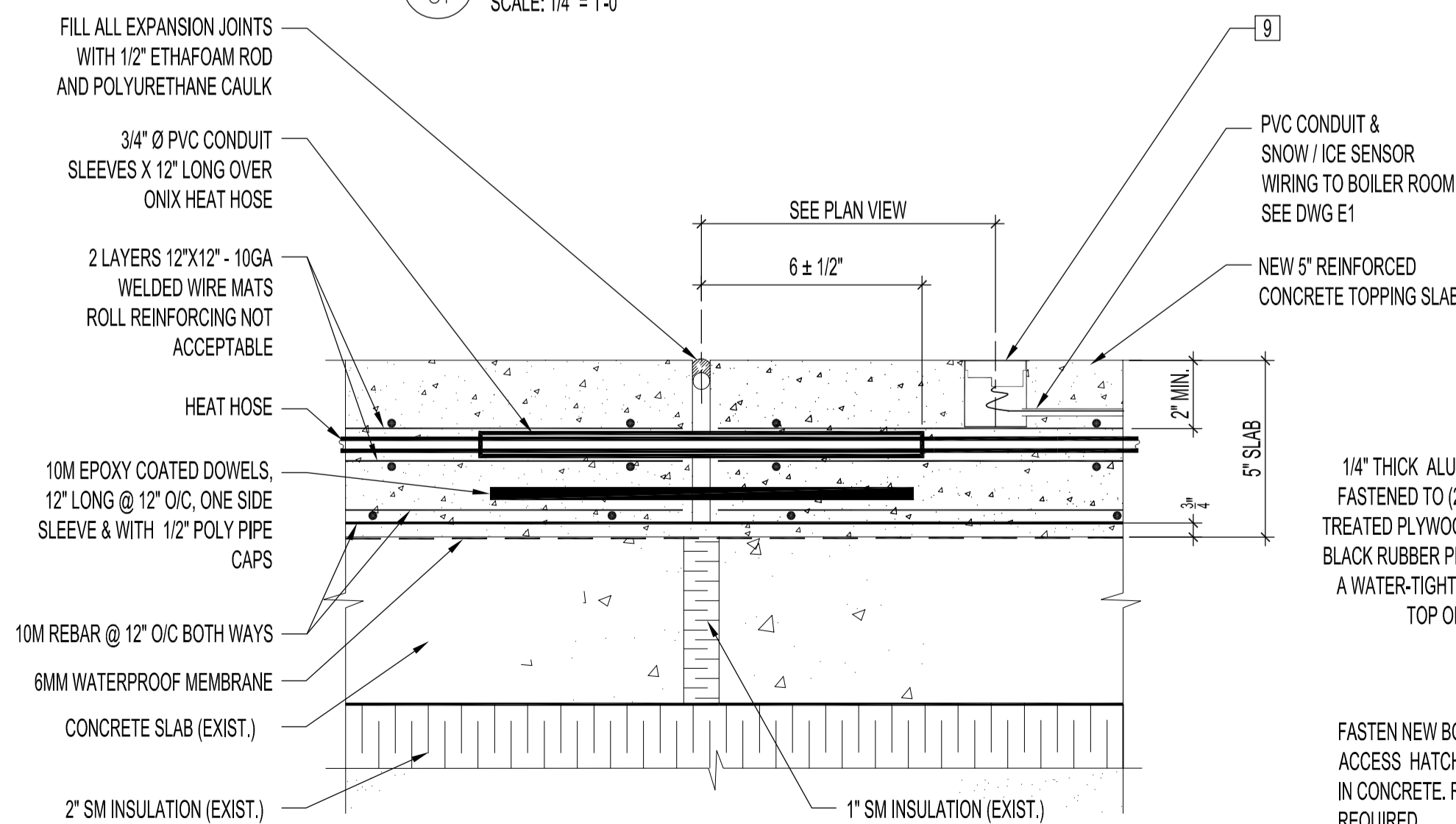
DRAWING SHEET SIZE: A1 (841mm x 594mm) PLOT 1:1



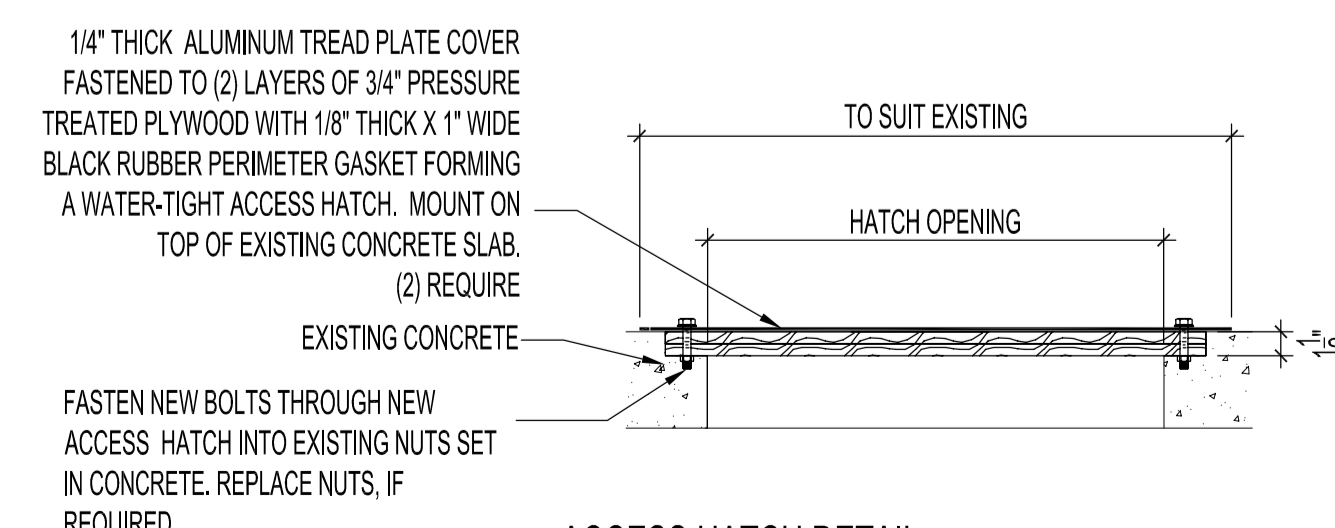
ENLARGED PLAN VIEW EXTERIOR RAMP - RENOVATION
 SCALE: 1/4"=1'-0"
 HEAT HOSES, DOWELS, CORED SLEEVES AND SLEEVES SHOWN FOR CLARITY



RAMP SECTION - RENOVATION
 SCALE: 1/4"=1'-0"



X-SECTION EXPANSION JOINT (TYPICAL) - RENOVATION
 SCALE: 3"=1'-0"



ACCESS HATCH DETAIL
 SCALE: 1"=1'-0"