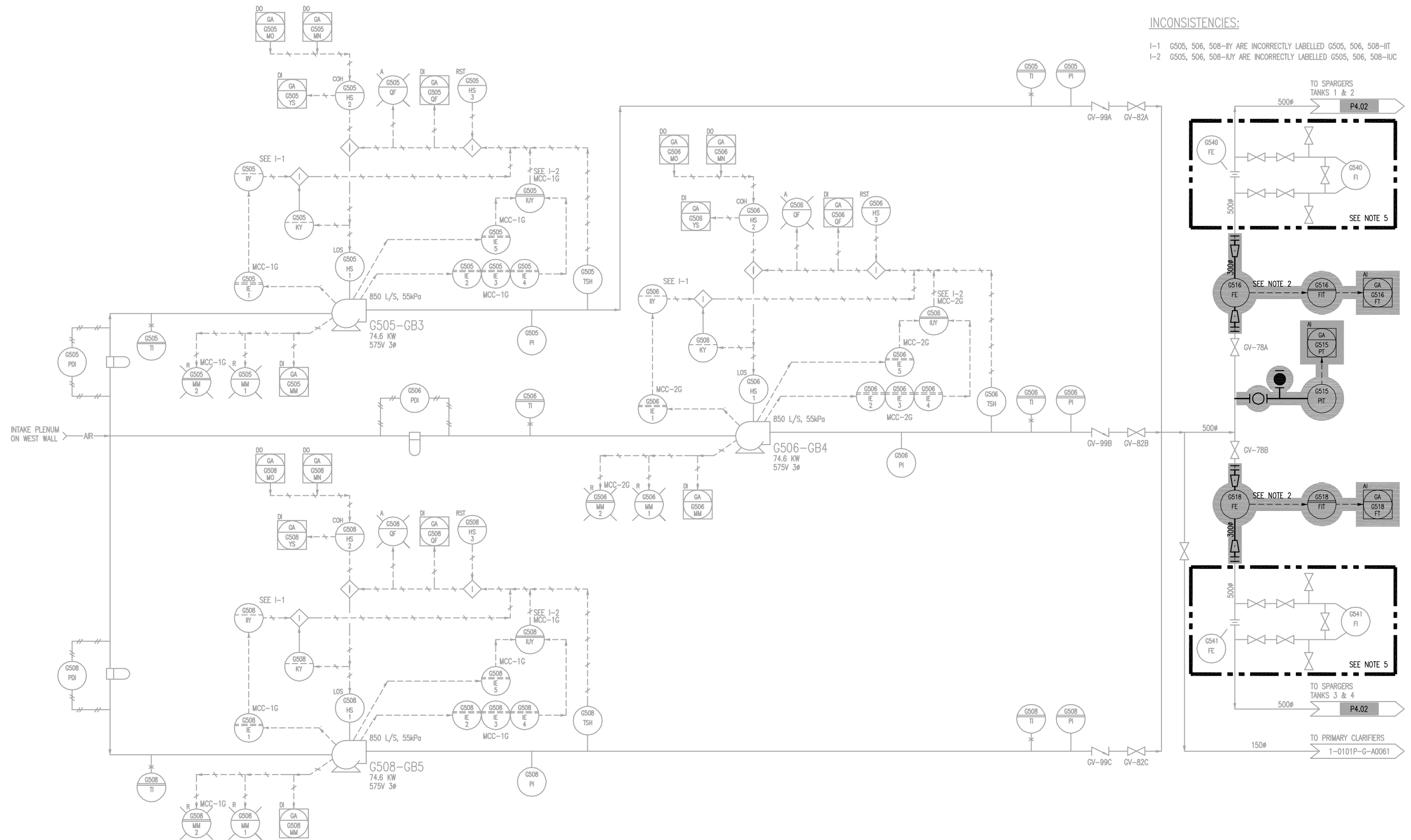


INCONSISTENCIES:




- I-1 G505, 506, 508-IY ARE INCORRECTLY LABELLED G505, 506, 508-IIT
- I-2 G505, 506, 508-IUY ARE INCORRECTLY LABELLED G505, 506, 508-IUC



NOTES:

1. ALL INSTRUMENTS SHOWN IN AN AUXILIARY LOCATION ARE IN THE BASEMENT BLOWER PANEL UNLESS OTHERWISE NOTED.
2. NEW FLOW TRANSMITTERS TO REPLACE EXISTING FLOW ELEMENTS.
3. BOLD LINE DENOTES NEW ELEMENTS TO BE SUPPLIED AND INSTALLED BY CONTRACTOR.
4. LIGHT LINE DENOTES EXISTING ELEMENTS.
5. EXISTING G540-FE TO BE REPLACED WITH G516-FE, EXISTING G541-FE TO BE REPLACED WITH G518-FE.

THIS DRAWING IS BASED ON CITY OF WINNIPEG DRAWING NUMBER 1-0101G-G-A0039-001-02D

 Certificate of Authorization Earth Tech Canada Inc. No. 730 Expiry: April 30, 2007	B.M. ELEV.	 A Tyco International Ltd. Company	ENGINEER'S SEAL	 THE CITY OF WINNIPEG WATER AND WASTE DEPARTMENT ENGINEERING DIVISION	
			DESIGNED BY EM		ORIGINAL SIGNED BY Q. MENG
			DRAWN BY SRP		2007/01/26
			HOR. SCALE: NTS VERTICAL SCALE:		CONSULTANT DRAWING NO. P4.01
	ISSUED FOR TENDER 07/01/26 GLG	DATE 2006/07/24	RELEASED FOR CONSTRUCTION BY: K. MARTENS	CITY FILE NUMBER	
	NO. REVISIONS	DATE BY	DATE 2007/01/26	SHEET OF	
				CITY DRAWING NUMBER	