

- NOTES:**
1. STATIONING IN WEST P.L. OF HENDERSON HWY. UNLESS NOTED OTHERWISE.
 2. S.W. PROPERTY LINE OF HENDERSON HWY. AND ROWANDALE AVE. = STA. 0+110.0.
 3. SEE DWG P3278-9 FOR TYPICAL CROSS SECTIONS AND DETAILS.
 4. FINAL CURB HEIGHT TO BE 150mm OR LOWER IN AREAS WHERE DRAINAGE MUST BE MAINTAINED.
 5. ALL PRIVATE APPROACH RADII ARE 4.5m.
 6. ALL DIMENSIONS ARE TO BACK OF CURB.
 7. ADJUST OR REPLACE EXISTING DRAINAGE INLETS WITH NEW SD-024 AS DIRECTED BY THE CONTRACT ADMINISTRATOR.
 8. ISOLATE MISCELLANEOUS ITEMS IN NEW CONCRETE WORKS AS PER SD-228C.
 9. PLANE EXISTING ASPHALT OVERLAY WITHIN CONTRACT LIMITS TO DEPTHS INDICATED BY THE CONTRACT ADMINISTRATOR. NOT ALL AREAS WILL REQUIRE PLANING.
 10. LEGAL PLAN AND UNDERGROUND INFORMATION FROM CITY OF WINNIPEG LBIS.
 11. AT GRADE CONCRETE BUS PADS TO BE 200mm THICK AND 13.0m IN LENGTH.

METRIC
WHOLE NUMBERS INDICATE MILLIMETRES
DECIMALIZED NUMBERS INDICATE METRES

150 mm W.M.	WATERMAIN	150 mm W.M.	HYDRO	150 mm W.M.	WATERMAIN	150 mm W.M.	WATERMAIN
300 mm L.D.S.	LAND DRAINAGE SEWER	300 mm L.D.S.	M.T.S.	300 mm L.D.S.	LAND DRAINAGE SEWER	300 mm L.D.S.	LAND DRAINAGE SEWER
250 mm W.W.S.	WASTE WATER SEWER	250 mm W.W.S.	CONCRETE	250 mm W.W.S.	WASTE WATER SEWER	250 mm W.W.S.	WASTE WATER SEWER
○	MANHOLE	●	ASPHALT	○	MANHOLE	○	MANHOLE
□	CATCH BASIN	■	PLANING	□	CATCH BASIN	□	CATCH BASIN
▽	CURB INLET	▽	SIDEWALK	▽	CURB INLET	▽	CURB INLET
⊕	JUNCTIONS	⊕	PAVING STONES	⊕	JUNCTIONS	⊕	JUNCTIONS
—	CULVERT	—	PARTIAL DEPTH REPAIR	—	CULVERT	—	CULVERT
—	GAS	—	PROPERTY LINE	—	GAS	—	GAS
—	EXISTING	—	SURVEY BAR	—	EXISTING	—	EXISTING
—	LEGEND-PLAN	—	PARAPLEGIC RAMP	—	LEGEND-PLAN	—	LEGEND-PLAN
—	PROPOSED	—	LEGEND-PROFILE	—	PROPOSED	—	PROPOSED

UNDERGROUND STRUCTURES

SUPPLY, U/G STRUCTURES COMMITTEE DATE

NOTE:
LOCATION OF UNDERGROUND STRUCTURES AS SHOWN ARE BASED ON THE BEST INFORMATION AVAILABLE. BUT NO GUARANTEE IS GIVEN THAT ALL EXISTING UTILITIES ARE SHOWN OR THAT THE GIVEN LOCATIONS ARE EXACT. CONFIRMATION OF EXISTENCE AND EXACT LOCATION OF ALL SERVICES MUST BE OBTAINED FROM THE INDIVIDUAL UTILITIES BEFORE PROCEEDING WITH CONSTRUCTION.

B.M. ELEV.	12-041	230.054m
NO.	REVISIONS	DATE BY
2	ISSUED FOR TENDER	05/1/07 D.B.W.
1	ISSUED FOR REVIEW	04/16/07 D.B.W.

DESIGNED BY T.J.P.

DRAWN BY P.M.W./A.P.

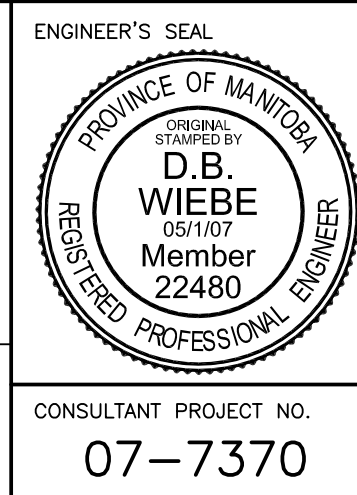
CHECKED BY D.B.W.

APPROVED BY

HOR. SCALE 1:250

VERTICAL 1:10

RELEASED FOR CONSTRUCTION DATE



THE CITY OF WINNIPEG
PUBLIC WORKS DEPARTMENT

HENDERSON HIGHWAY - S. BOUND
ROWANDALE AVE. TO ESSAR AVE
MAJOR REHABILITATION
STA. 0+425 TO STA. 0+575

CITY DRAWING NUMBER **P-3278-03**
SHEET 3 OF 9

CONSULTANT PROJECT NO. **07-7370**