

- NOTES:**
1. STATIONING IN WEST P.L. OF HENDERSON HWY. UNLESS NOTED OTHERWISE.
 2. S.W. PROPERTY LINE OF HENDERSON HWY. AND ROWANDALE AVE. = STA. 0+110.0.
 3. SEE DWG P3278-9 FOR TYPICAL CROSS SECTIONS AND DETAILS.
 4. FINAL CURB HEIGHT TO BE 150mm OR LOWER IN AREAS WHERE DRAINAGE MUST BE MAINTAINED.
 5. ALL PRIVATE APPROACH RADII ARE 4.5m.
 6. ALL DIMENSIONS ARE TO BACK OF CURB.
 7. ADJUST OR REPLACE EXISTING DRAINAGE INLETS WITH NEW SD-024 AS DIRECTED BY THE CONTRACT ADMINISTRATOR.
 8. ISOLATE MISCELLANEOUS ITEMS IN NEW CONCRETE WORKS AS PER SD-228C.
 9. PLANE EXISTING ASPHALT OVERLAY WITHIN CONTRACT LIMITS TO DEPTHS INDICATED BY THE CONTRACT ADMINISTRATOR. NOT ALL AREAS WILL REQUIRE PLANING.
 10. LEGAL PLAN AND UNDERGROUND INFORMATION FROM CITY OF WINNIPEG LBIS.
 11. AT GRADE CONCRETE BUS PADS TO BE 200mm THICK AND 13.0m IN LENGTH.

METRIC

WHOLE NUMBERS INDICATE MILLIMETRES
DECIMALIZED NUMBERS INDICATE METRES

150 mm W.M.	WATERMAIN	150 mm W.M.	HYDRO	150 mm W.M.	WATERMAIN	150 mm W.M.
Hydrant	HYDRANT	Hydrant	M.T.S.	Hydrant	HYDRANT	Hydrant
Valve	VALVE	Valve	CONCRETE	Valve	VALVE	Valve
300 mm L.D.S.	LAND DRAINAGE SEWER	300 mm L.D.S.	ASPHALT	300 mm L.D.S.	LAND DRAINAGE SEWER	300 mm L.D.S.
250 mm W.W.S.	WASTE WATER SEWER	250 mm W.W.S.	PLANING	250 mm W.W.S.	WASTE WATER SEWER	250 mm W.W.S.
Manhole	MANHOLE	Manhole	SIDEWALK	Manhole	MANHOLE	Manhole
Catch Basin	CATCH BASIN	Catch Basin	PAVING STONES	Catch Basin	CATCH BASIN	Catch Basin
Curb Inlet	CURB INLET	Curb Inlet	PARTIAL DEPTH REPAIR	Curb Inlet	CATCH BASIN	Curb Inlet
Junctions	JUNCTIONS	Junctions	PROPERTY LINE	Junctions	CATCH BASIN	Junctions
Culvert	CULVERT	Culvert	SURVEY BAR	Culvert	CATCH BASIN	Culvert
Gas	GAS	Gas	PARAPLEGIC RAMP	Gas	CATCH BASIN	Gas
Existing Legend-Plan	PROPOSED	Existing Legend-Plan	PROPOSED	Existing Legend-Plan	PROPOSED	Existing Legend-Plan

UNDERGROUND STRUCTURES

SUPPLY U/G STRUCTURES COMMITTEE DATE

NOTE:
LOCATION OF UNDERGROUND STRUCTURES AS SHOWN ARE BASED ON THE BEST INFORMATION AVAILABLE BUT NO GUARANTEE IS GIVEN THAT ALL EXISTING UTILITIES ARE SHOWN OR THAT THE GIVEN LOCATIONS ARE EXACT. CONFIRMATION OF EXISTENCE AND EXACT LOCATION OF ALL SERVICES MUST BE OBTAINED FROM THE INDIVIDUAL UTILITIES BEFORE PROCEEDING WITH CONSTRUCTION.

B.M. 12-003
ELEV. 230.015m

2	ISSUED FOR TENDER	05/1/07	D.B.W.
1	ISSUED FOR REVIEW	04/16/07	D.B.W.
NO.	REVISIONS	DATE	BY

DESIGNED BY T.J.P.

DRAWN BY P.M.W./A.P.

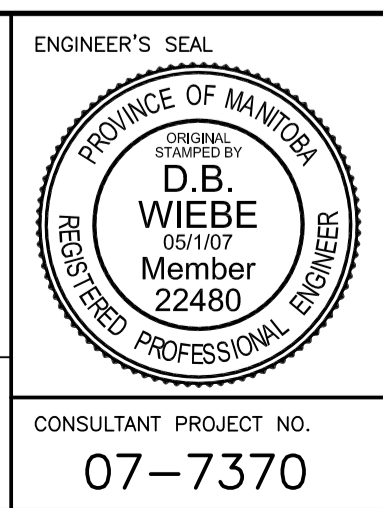
CHECKED BY D.B.W.

APPROVED BY

HOR. SCALE 1:250

VERTICAL 1:10

DATE FEB. 23, 2007



THE CITY OF WINNIPEG
PUBLIC WORKS DEPARTMENT

HENDERSON HIGHWAY – S. BOUND
ROWANDALE AVE. TO ESSAR AVE
MAJOR REHABILITATION
STA. 0+875 TO STA. 0+975

CITY DRAWING NUMBER **P-3278-06**
SHEET 6 OF 9

CONSULTANT PROJECT NO. **07-7370**

RELEASED FOR CONSTRUCTION DATE