

- NOTES:**
1. STATIONING IN WEST P.L. OF HENDERSON HWY. UNLESS NOTED OTHERWISE.
  2. S.W. PROPERTY LINE OF HENDERSON HWY. AND ROWANDALE AVE. = STA. 0+110.0.
  3. SEE DWG P3278-9 FOR TYPICAL CROSS SECTIONS AND DETAILS.
  4. FINAL CURB HEIGHT TO BE 150mm OR LOWER IN AREAS WHERE DRAINAGE MUST BE MAINTAINED.
  5. ALL PRIVATE APPROACH RADII ARE 4.5m.
  6. ALL DIMENSIONS ARE TO BACK OF CURB.
  7. ADJUST OR REPLACE EXISTING DRAINAGE INLETS WITH NEW SD-024 AS DIRECTED BY THE CONTRACT ADMINISTRATOR.
  8. ISOLATE MISCELLANEOUS ITEMS IN NEW CONCRETE WORKS AS PER SD-228C.
  9. PLANE EXISTING ASPHALT OVERLAY WITHIN CONTRACT LIMITS TO DEPTHS INDICATED BY THE CONTRACT ADMINISTRATOR. NOT ALL AREAS WILL REQUIRE PLANING.
  10. LEGAL PLAN AND UNDERGROUND INFORMATION FROM CITY OF WINNIPEG LBIS.
  11. AT GRADE CONCRETE BUS PADS TO BE 200mm THICK AND 13.0m IN LENGTH.

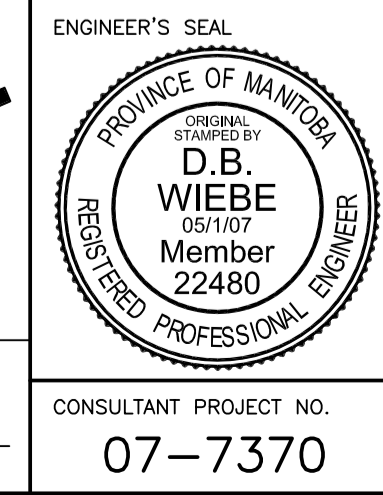
**METRIC**  
 WHOLE NUMBERS INDICATE MILLIMETRES  
 DECIMALIZED NUMBERS INDICATE METRES

150 mm W.M.	WATERMAIN	150 mm W.M.	HYDRO	150 mm W.M.	WATERMAIN	150 mm W.M.
300 mm L.D.S.	LAND DRAINAGE SEWER	300 mm L.D.S.	CONCRETE	300 mm L.D.S.	LAND DRAINAGE SEWER	300 mm L.D.S.
250 mm W.W.S.	WASTE WATER SEWER	250 mm W.W.S.	ASPHALT	250 mm W.W.S.	WASTE WATER SEWER	250 mm W.W.S.
○	MANHOLE	●	PLANING	○	Q PROFILE	○
□	CATCH BASIN	■	PAVING STONES	□	NORTH/WEST GUTTER	□
▽	CURB INLET	▼	PARTIAL DEPTH REPAIR	▽	SOUTH/EAST GUTTER	▽
⊕	JUNCTIONS	⊕	PROPERTY LINE	⊕	NORTH/WEST T/LANE	⊕
⊖	CULVERT	⊖	SURVEY BAR	⊖	SOUTH/EAST T/LANE	⊖
⊗	GAS	⊗	PARAPLEGIC RAMP	⊗		⊗
---	EXISTING LEGEND-PLAN	---	PROPOSED	---	EXISTING LEGEND-PROFILE	---
---	PROPOSED	---	EXISTING	---	PROPOSED	---

**UNDERGROUND STRUCTURES**  
 SUPV. U/G STRUCTURES COMMITTEE DATE  
 NOTE:  
 LOCATION OF UNDERGROUND STRUCTURES AS SHOWN ARE BASED ON THE BEST INFORMATION AVAILABLE. BUT NO GUARANTEE IS GIVEN THAT ALL EXISTING UTILITIES ARE SHOWN OR THAT THE GIVEN LOCATIONS ARE EXACT. CONFIRMATION OF EXISTENCE AND EXACT LOCATION OF ALL SERVICES MUST BE OBTAINED FROM THE INDIVIDUAL UTILITIES BEFORE PROCEEDING WITH CONSTRUCTION.

B.M.	12-003	DESIGNED BY	T.J.P.
ELEV.	230.015m	DRAWN BY	P.M.W./A.P.
		CHECKED BY	D.B.W.
		APPROVED BY	
2	ISSUED FOR TENDER	05/1/07	D.B.W.
1	ISSUED FOR REVIEW	04/16/07	D.B.W.
NO.	REVISIONS	DATE	BY
		FEB. 23, 2007	

HOR. SCALE 1:250  
 VERTICAL 1:10  
 RELEASED FOR CONSTRUCTION  
 DATE



**THE CITY OF WINNIPEG**  
 PUBLIC WORKS DEPARTMENT

**ROWANDALE AVENUE**  
 MAJOR REHABILITATION  
 100m WEST OF HENDERSON HWY.  
 TO HENDERSON HWY.

CITY DRAWING NUMBER  
**P-3278-08**  
 SHEET 8 OF 9

CONSULTANT PROJECT NO.  
**07-7370**