

# **APPENDIX 'A'**

# **GEOTECHNICAL REPORT**

## APPENDIX 'A' - GEOTECHNICAL REPORT

### TABLE OF CONTENTS

<b>GEOTECHNICAL REPORT FOR HENDERSON HIGHWAY (SOUTHBOUND) – ROWANDALE AVENUE TO ESSAR AVENUE</b>	<b>1</b>
Test Hole Locations	1
Pavement Core Photos	2

The pavement core report is provided to aid in the Contractor's evaluation of the existing pavement structure. The information presented is considered accurate at the locations shown on the Drawings and at the time of drilling. However, variations in pavement structure may exist between test holes. The nature and extent of variations may not become evident until construction commences.

**Pavement Core Report for Henderson Highway (Southbound) – Rowandale Avenue to Essar Avenue**

**Test Hole Locations**



**TABLE 1  
HENDERSON HIGHWAY SOUTHBOUND, ESSAR TO ROWANDALE**

Core No.	Location	Asphalt Thickness (mm)	Remarks
1	curb lane, 2 m south from centreline of Essar Ave	49	Sound pavement
2	curb lane, 3 m north from property line between 1254 & 1258 Henderson Hwy	97	Sound pavement
3	curb lane, 12 m south from property line between 1224 & 1230 Henderson Hwy	77	Pavement fractured at 63 mm
4	curb lane, 16 m south from centreline of Hawthorne Ave	75	Pavement fractured at 40 mm
5	curb lane, 6 m south from property line between 1108 & 1110 Henderson Hwy	52	Sound pavement
6	median lane, 20 m south from centreline of Slater Ave	51	Sound pavement
7	left turn lane, 15 m north from centreline of north sidewalk on Rowandale Ave	165	Pavement fractured at 55 mm

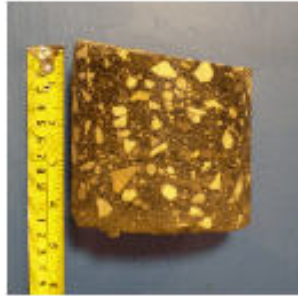
**Pavement Core Photos**



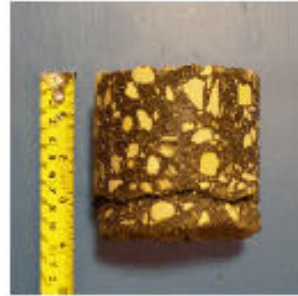
**HENDERSON HIGHWAY SOUTHBOUND, ESSAR TO ROWANDALE  
PAVEMENT INSPECTION**



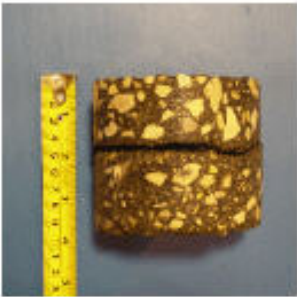
Core no. 1



Core No. 2



Core No. 3



Core no. 4



Core no. 5



Core no. 6



Core no. 7