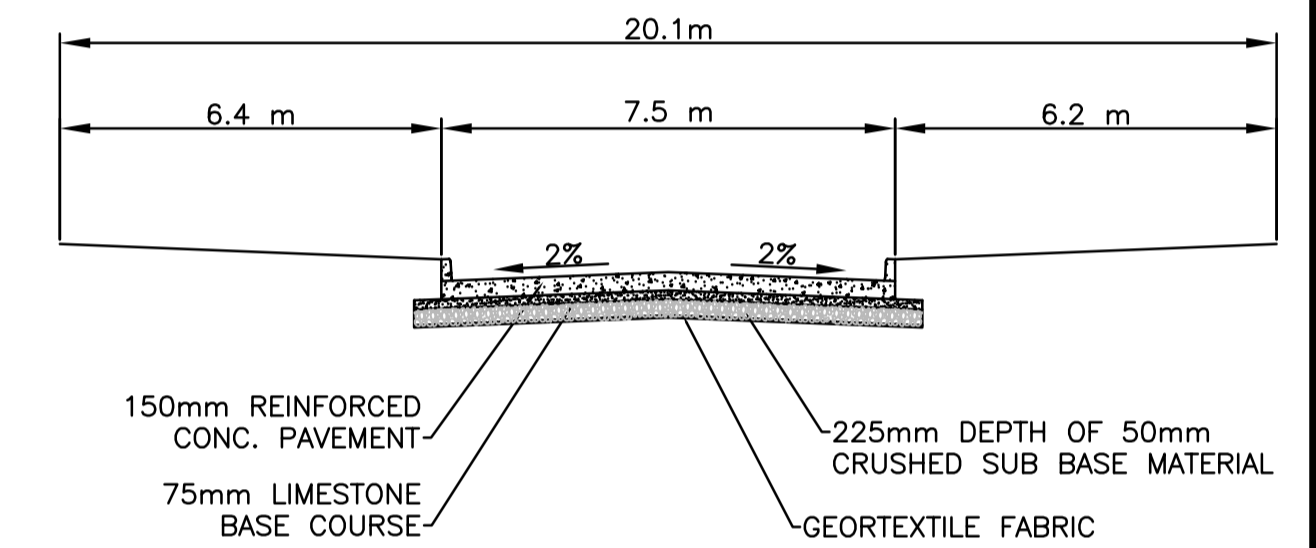


L = 310 m W = 7.5 m A = 2325 m²
 TYPE - CONCRETE RECONSTRUCTION

CONSTRUCTION NOTES:

1. CONTRACTOR SHALL TAKE PRECAUTIONARY STEPS TO AVOID DAMAGE FROM CONSTRUCTION ACTIVITIES TO EXISTING BOULEVARDS AND TREES WITHIN THE LIMITS OF CONSTRUCTION.
2. LOCATION OF EXISTING SERVICES ARE TO BE CONFIRMED IN THE FIELD BY THE CONTRACTOR.
3. TIE-INS TO BE VERIFIED IN THE FIELD BY THE CONTRACT ADMINISTRATOR.
4. LOCATION OF SIDEWALK RENEWALS TO BE FINALIZED IN THE FIELD BY THE CONTRACT ADMINISTRATOR
5. BOULEVARD REPLACEMENT TO BE FINALIZED IN THE FIELD AS DIRECTED BY THE CONTRACT ADMINISTRATOR.
6. 300mm SUB BASE TO BE ADDED WHERE OVER EXCAVATION IS REQUIRED AS DIRECTED IN THE FIELD BY THE CONTRACT ADMINISTRATOR.
7. SUBDRAINS SHALL BE INSTALLED AS PER SD-245.

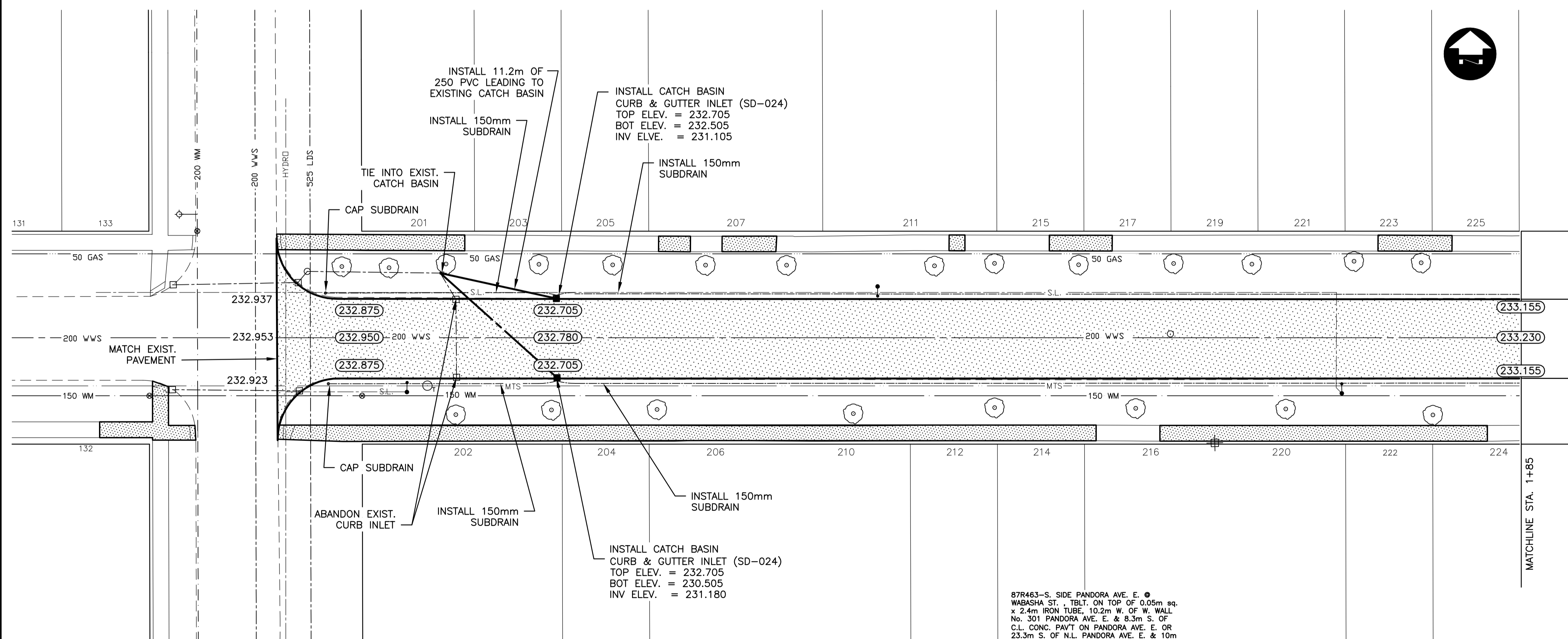
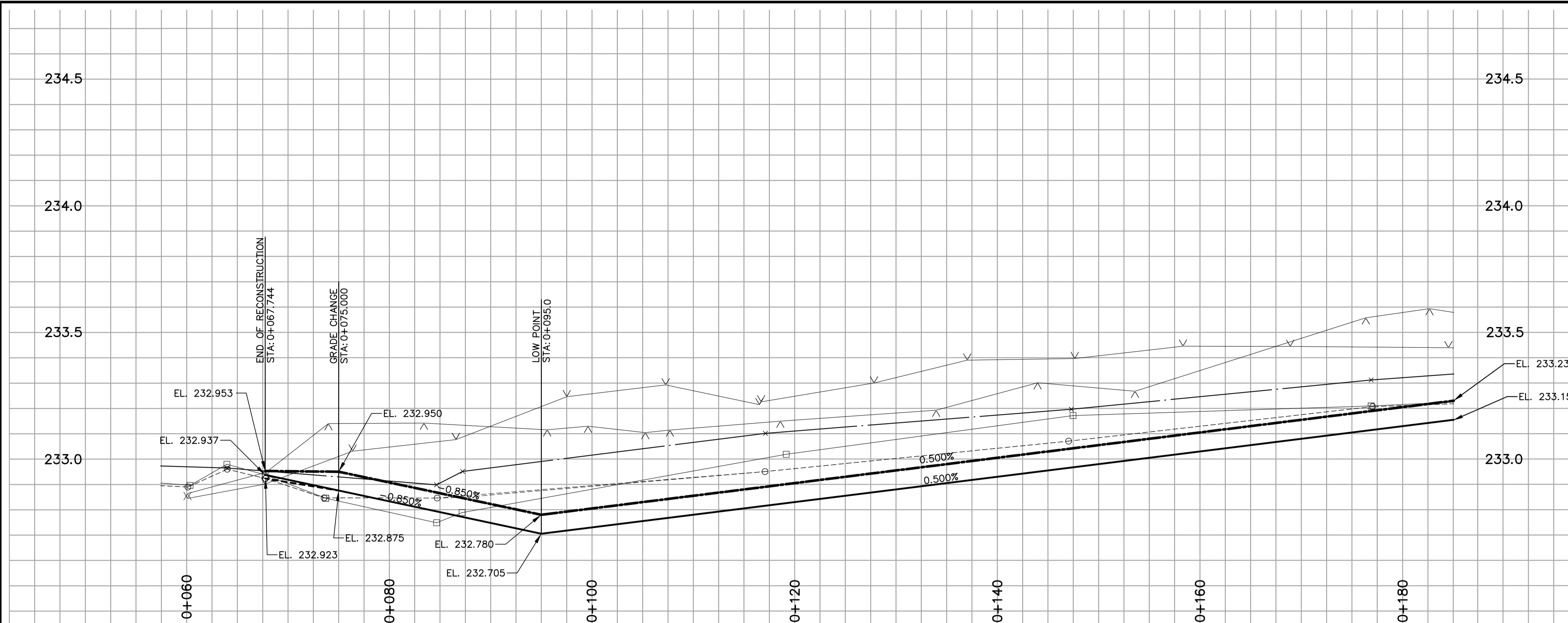


METRIC
 WHOLE NUMBERS INDICATE MILLIMETRES
 DECIMALIZED NUMBERS INDICATE METRES

WARNING

IF POWER EQUIPMENT OR EXPLOSIVES ARE TO BE USED FOR EXCAVATION ON THIS PROJECT THE CONTRACTOR MUST:

1. NOTIFY THE GAS COMPANY OF THE PROPOSED LOCATION OF EXCAVATION.
2. TAKE PRECAUTION TO AVOID DAMAGE TO GAS COMPANY INSTALLATIONS
 SEE PROVINCIAL REGULATION 210/72 FOR DETAILS



87R463-S. SIDE PANDORA AVE. E. ●
 WABASHA ST. TBLT. ON TOP OF 0.05m sq.
 x 2.4m IRON TUBE, 10.2m W. OF W. WALL
 No. 301 PANDORA AVE. E. & 8.3m S. OF
 C.L. CONC. PAVT ON PANDORA AVE. E. OR
 23.3m S. OF N.L. PANDORA AVE. E. & 10m
 W. OF E.L. WABASHA ST.

150 mm W.M.	WATERMAIN	150 mm W.M.	HYDRO	150 mm W.M.	WATERMAIN	150 mm W.M.
Hydrant Valve	Hydrant Valve	M.T.S.	Concrete	Hydrant Valve	Hydrant Valve	Hydrant Valve
300 mm L.D.S.	LAND DRAINAGE SEWER	Asphalt	Asphalt	300 mm L.D.S.	LAND DRAINAGE SEWER	300 mm L.D.S.
250 mm W.W.S.	WASTE WATER SEWER	Planing	Planing	250 mm W.W.S.	WASTE WATER SEWER	250 mm W.W.S.
Manhole	Manhole	Sidewalk	Sidewalk	Manhole	Manhole	Manhole
Catch Basin	Catch Basin	Paving Stones	Paving Stones	Catch Basin	Catch Basin	Catch Basin
Curb Inlet	Curb Inlet	Partial Depth Repair	Partial Depth Repair	Curb Inlet	Curb Inlet	Curb Inlet
Junctions	Junctions	Property Line	Property Line	Junctions	Junctions	Junctions
Culvert	Culvert	Survey Bar	Survey Bar	Culvert	Culvert	Culvert
Gas	Gas	Paraplegic Ramp	Paraplegic Ramp	Gas	Gas	Gas
EXISTING	LEGEND-PLAN	PROPOSED	EXISTING	LEGEND-PLAN	PROPOSED	EXISTING
EXISTING	LEGEND-PROFILE	PROPOSED	EXISTING	LEGEND-PROFILE	PROPOSED	EXISTING

UNDERGROUND STRUCTURES
 B.M. ELEV. 30-035
 233.496
 DESIGNED BY TJP
 DRAWN BY PMW
 CHECKED BY DPK
 REVIEWED ORIGINAL SIGNED BY DPK 01/30/07
 HOR. SCALE 1:250
 VERTICAL 1:10
 RELEASED FOR CONSTRUCTION ORIGINAL SIGNED BY KEN TURKO
 DATE 01/30/07

NO.	REVISIONS	DATE	BY
2	ISSUED FOR TENDER	01/30/07	TJP
1	ISSUED FOR REVIEW	12/22/06	TJP

DILLON CONSULTING

ENGINEER'S SEAL
 T.J. PETERS
 Member 22309
 REGISTERED PROFESSIONAL ENGINEER

CONSULTANT PROJECT NO. 06-6968-2000

THE CITY OF WINNIPEG PUBLIC WORKS DEPARTMENT

2007 RESIDENTIAL STREET RENEWAL PROGRAM
VICTORIA AVENUE EAST
 KANATA STREET TO ROANOKE STREET
 STA. 0+068 TO STA. 0+185

CITY DRAWING NUMBER SHEET 12 OF 14