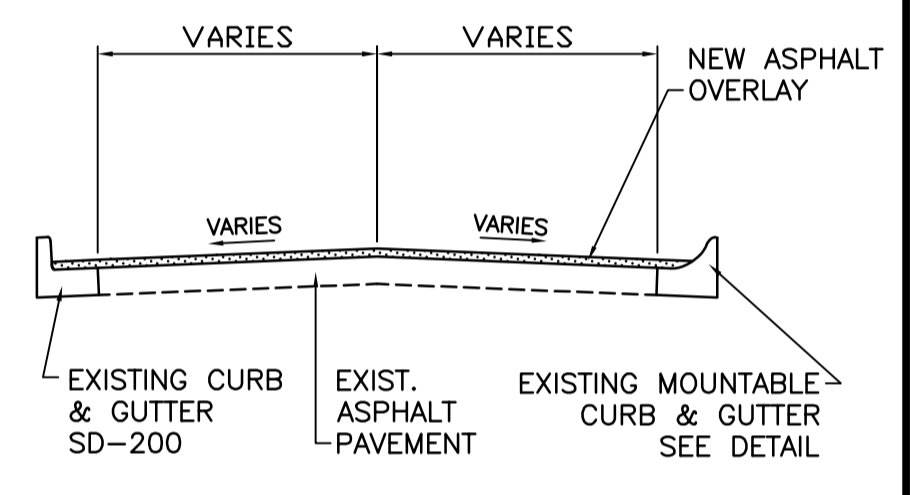
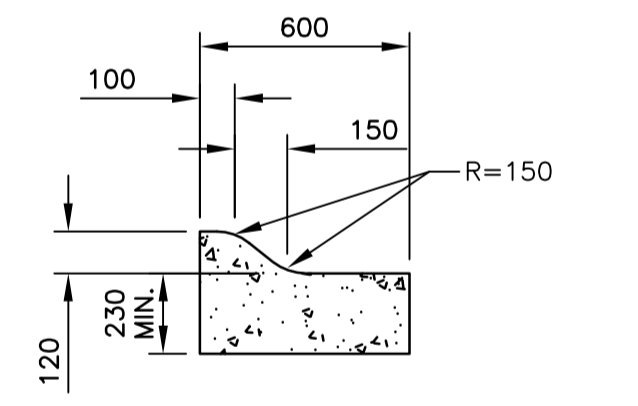


- 232.8 L = 1450 m W = 8.5 m A = 15375 m<sup>2</sup>  
TYPE - MAJOR REHABILITATION
- 232.6 **CONSTRUCTION NOTES:**
- 232.4 CONTRACTOR SHALL TAKE PRECAUTIONARY STEPS TO AVOID DAMAGE FROM CONSTRUCTION ACTIVITIES TO EXISTING BOULEVARDS AND TREES WITHIN THE LIMITS OF CONSTRUCTION.
  - 232.2 LOCATION OF EXISTING SERVICES ARE TO BE CONFIRMED IN THE FIELD BY THE CONTRACTOR.
  - 232.0 TIE-INS TO BE VERIFIED IN THE FIELD BY THE CONTRACT ADMINISTRATOR.
  - 231.8 BOULEVARD REPLACEMENT TO BE FINALIZED IN THE FIELD AS DIRECTED BY THE CONTRACT ADMINISTRATOR.
  - 231.6 PLACE EXISTING ASPHALT OVERLAY WITHIN CONTRACT LIMITS TO DEPTH INDICATED BY THE CONTRACT ADMINISTRATOR. NOT ALL AREAS WILL REQUIRE PLANING.
  - 231.4 CURB AND GUTTER REPLACEMENT TO BE FINALIZED IN THE FIELD AS DIRECTED BY THE CONTRACT ADMINISTRATOR.
  - 231.2 JOINT AND SLAB REPAIRS TO BE FINALIZED IN THE FIELD AS DIRECTED BY THE CONTRACT ADMINISTRATOR.
  - 231.0 STATIONING ALONG SOUTH GUTTER UNLESS NOTED OTHERWISE.
  - GRANULAR BOULEVARD TO BE REGRADED AS DIRECTED BY THE CONTRACT ADMINISTRATOR.



ASPHALT ROAD WITH CONCRETE CURB & GUTTER  
N.T.S.

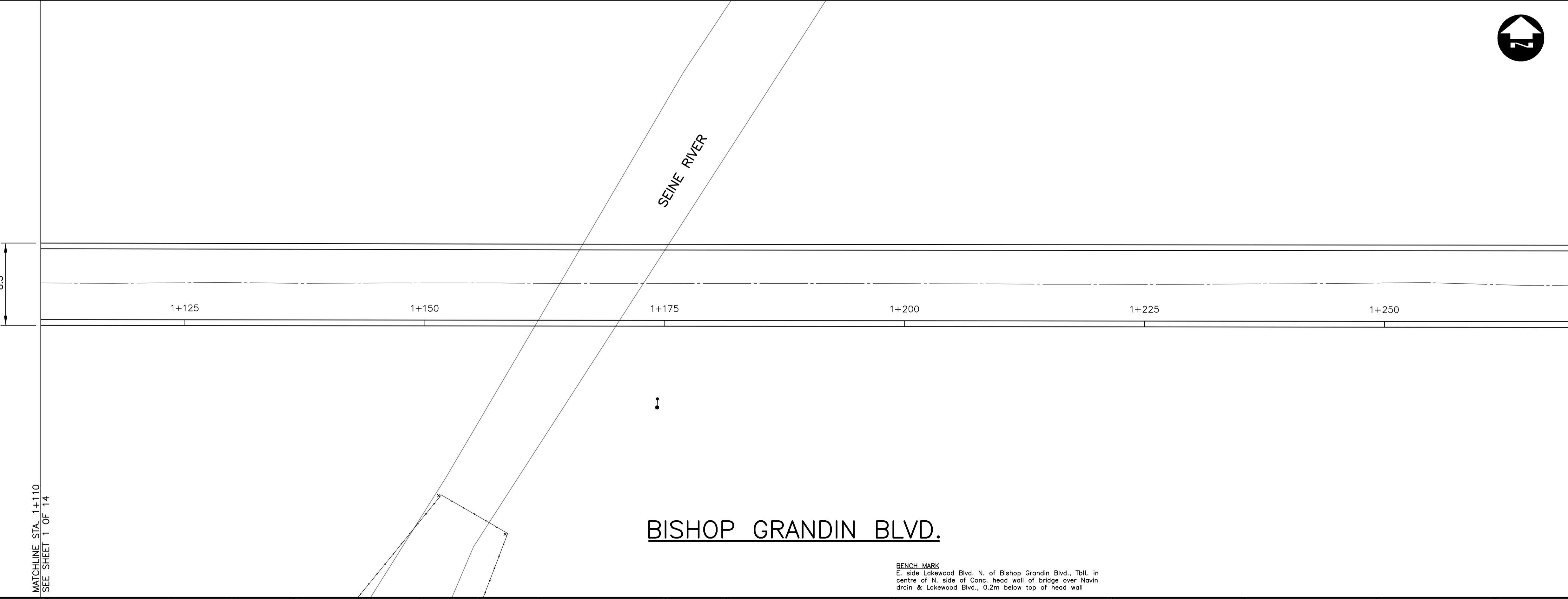


MOUNTABLE CURB & GUTTER  
N.T.S.

METRIC  
WHOLE NUMBERS INDICATE MILLIMETRES  
DECIMALIZED NUMBERS INDICATE METRES

**WARNING**

- IF POWER EQUIPMENT OR EXPLOSIVES ARE TO BE USED FOR EXCAVATION ON THIS PROJECT THE CONTRACTOR MUST:
1. NOTIFY THE GAS COMPANY OF THE PROPOSED LOCATION OF EXCAVATION.
  2. TAKE PRECAUTION TO AVOID DAMAGE TO GAS COMPANY INSTALLATIONS  
SEE PROVINCIAL REGULATION 210/72 FOR DETAILS



**BISHOP GRANDIN BLVD.**

**BENCH MARK**  
E. side Lakewood Blvd. N. of Bishop Grandin Blvd., Tblt. in centre of N. side of Conc. head wall of bridge over Navin drain & Lakewood Blvd., 0.2m below top of head wall

150 mm W.M.	WATERMAIN	150 mm W.M.	HYDRO	150 mm W.M.	WATERMAIN	150 mm W.M.
300 mm L.D.S.	LAND DRAINAGE SEWER	300 mm L.D.S.	CONCRETE	300 mm L.D.S.	LAND DRAINAGE SEWER	300 mm L.D.S.
250 mm W.W.S.	WASTE WATER SEWER	250 mm W.W.S.	ASPHALT	250 mm W.W.S.	WASTE WATER SEWER	250 mm W.W.S.
○	MANHOLE	●	PLANING	○	MANHOLE	○
□	CATCH BASIN	■	SIDEWALK	□	CATCH BASIN	□
▽	CURB INLET	▼	PAVING STONES	▽	CURB INLET	▽
+	JUNCTIONS	+	PARTIAL DEPTH REPAIR	+	JUNCTIONS	+
—	CULVERT	—	PROPERTY LINE	—	CULVERT	—
—	GAS	—	SURVEY BAR	—	GAS	—
—	LEGEND—PLAN	—	PARAPLEGIC RAMP	—	LEGEND—PLAN	—
—	PROPOSED	—	LEGEND—PROFILE	—	PROPOSED	—
—	EXISTING	—	PROPOSED	—	EXISTING	—
—	LEGEND—PROFILE	—	EXISTING	—	LEGEND—PROFILE	—
—	PROPOSED	—	LEGEND—PLAN	—	PROPOSED	—
—	EXISTING	—	PROPOSED	—	EXISTING	—

**UNDERGROUND STRUCTURES**

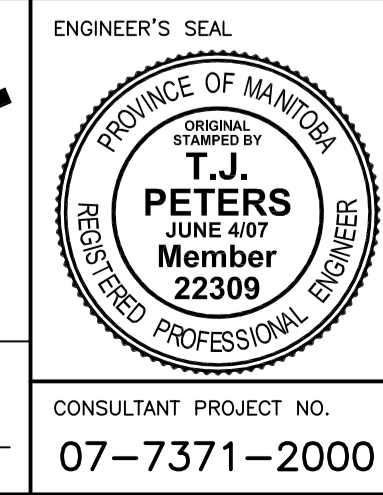
SUPPLY U/G STRUCTURES COMMITTEE DATE

NOTE:  
LOCATION OF UNDERGROUND STRUCTURES AS SHOWN ARE BASED ON THE BEST INFORMATION AVAILABLE. BUT NO GUARANTEE IS GIVEN THAT ALL EXISTING UTILITIES ARE SHOWN OR THAT THE GIVEN LOCATIONS ARE EXACT. CONFIRMATION OF EXISTENCE AND EXACT LOCATION OF ALL SERVICES MUST BE OBTAINED FROM THE INDIVIDUAL UTILITIES BEFORE PROCEEDING WITH CONSTRUCTION.

B.M. ELEV. 55-017  
232.537m

DESIGNED BY	TJP
DRAWN BY	PMW
CHECKED BY	DBW
APPROVED BY	ORIGINAL SIGNED BY: DPK
HOR. SCALE	1:250
VERTICAL	1:10
RELEASER FOR CONSTRUCTION	ORIGINAL SIGNED BY: KEN TURKO
DATE	MAY 2007

2	ISSUED FOR TENDER	08/04/07	TJP
1	ISSUED FOR REVIEW	05/16/07	TJP
NO.	REVISIONS	DATE	BY



**THE CITY OF WINNIPEG**  
PUBLIC WORKS DEPARTMENT

**BISHOP GRANDIN E. BOUND**  
ST. ANNE'S RD. TO LAKEWOOD BLVD.  
MAJOR REHABILITATION  
STA: 1+110 TO STA: 1+270

CITY DRAWING NUMBER  
**P-3284-2**  
SHEET 2 OF 14

CONSULTANT PROJECT NO.  
**07-7371-2000**