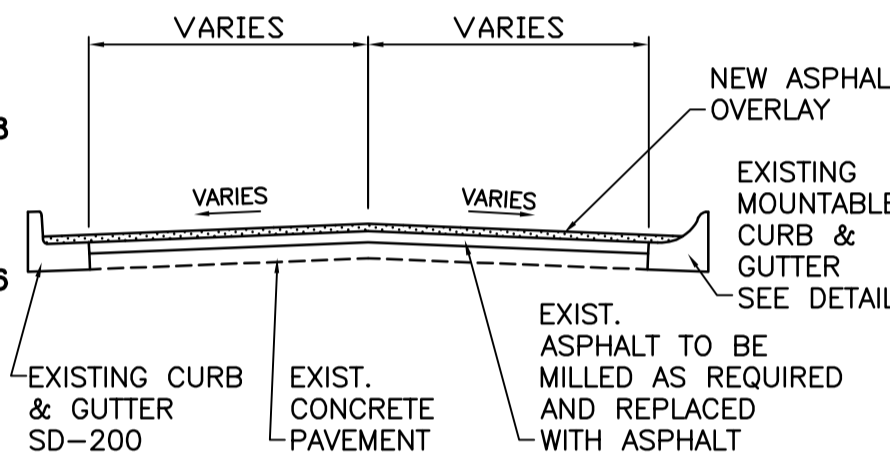
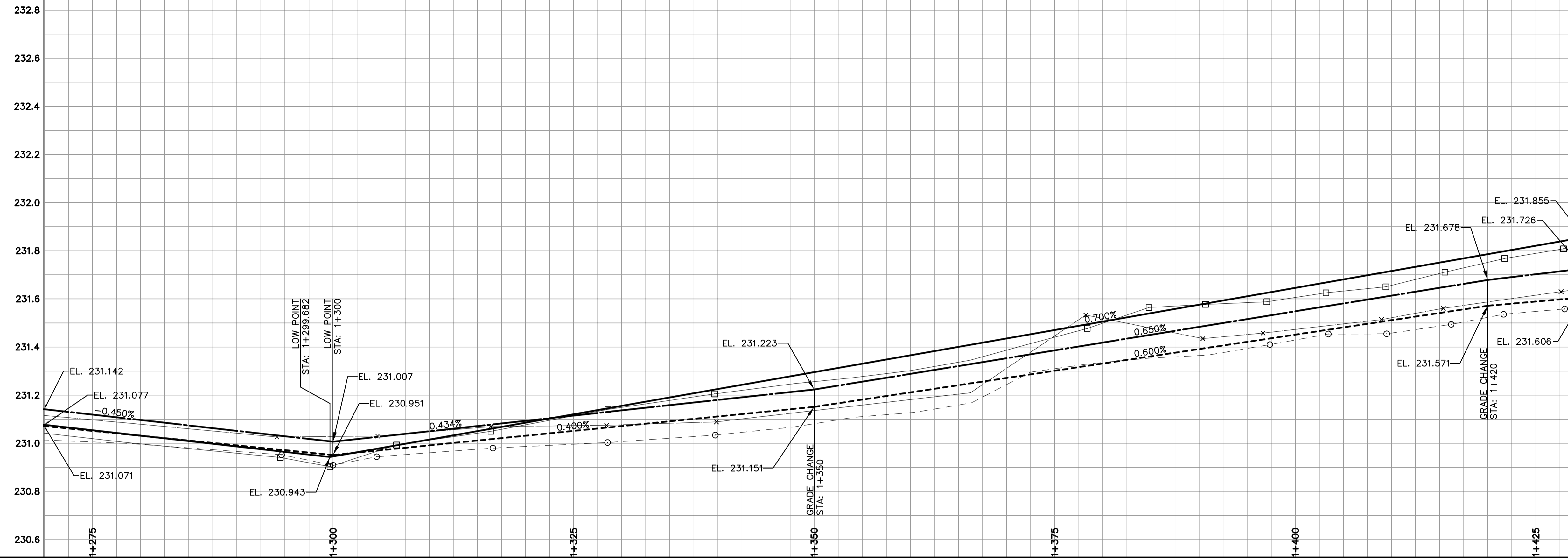


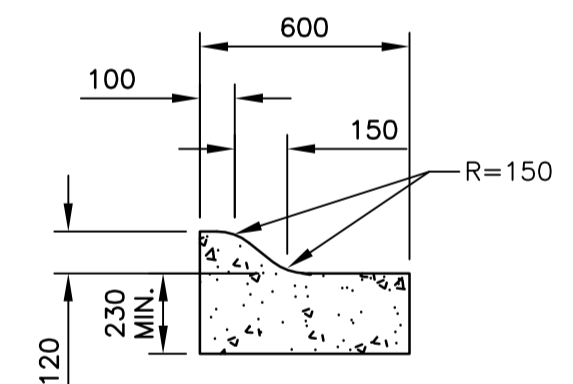
L = 1450 m W = 8.5 m A = 15375 m²
TYPE - MAJOR REHABILITATION

CONSTRUCTION NOTES:

1. CONTRACTOR SHALL TAKE PRECAUTIONARY STEPS TO AVOID DAMAGE FROM CONSTRUCTION ACTIVITIES TO EXISTING BOULEVARDS AND TREES WITHIN THE LIMITS OF CONSTRUCTION.
2. LOCATION OF EXISTING SERVICES ARE TO BE CONFIRMED IN THE FIELD BY THE CONTRACTOR.
3. TIE-INS TO BE VERIFIED IN THE FIELD BY THE CONTRACT ADMINISTRATOR.
4. BOULEVARD REPLACEMENT TO BE FINALIZED IN THE FIELD AS DIRECTED BY THE CONTRACT ADMINISTRATOR.
5. PLACE EXISTING ASPHALT OVERLAY WITHIN CONTRACT LIMITS TO DEPTH INDICATED BY THE CONTRACT ADMINISTRATOR. NOT ALL AREAS WILL REQUIRE PLANING.
6. CURB AND GUTTER REPLACEMENT TO BE FINALIZED IN THE FIELD AS DIRECTED BY THE CONTRACT ADMINISTRATOR.
7. JOINT AND SLAB REPAIRS TO BE FINALIZED IN THE FIELD AS DIRECTED BY THE CONTRACT ADMINISTRATOR.
8. STATIONING ALONG SOUTH GUTTER UNLESS NOTED OTHERWISE.
9. GRANULAR BOULEVARD TO BE REGRADED AS DIRECTED BY THE CONTRACT ADMINISTRATOR.



CONCRETE ROAD WITH CONCRETE CURB & GUTTER
N.T.S.

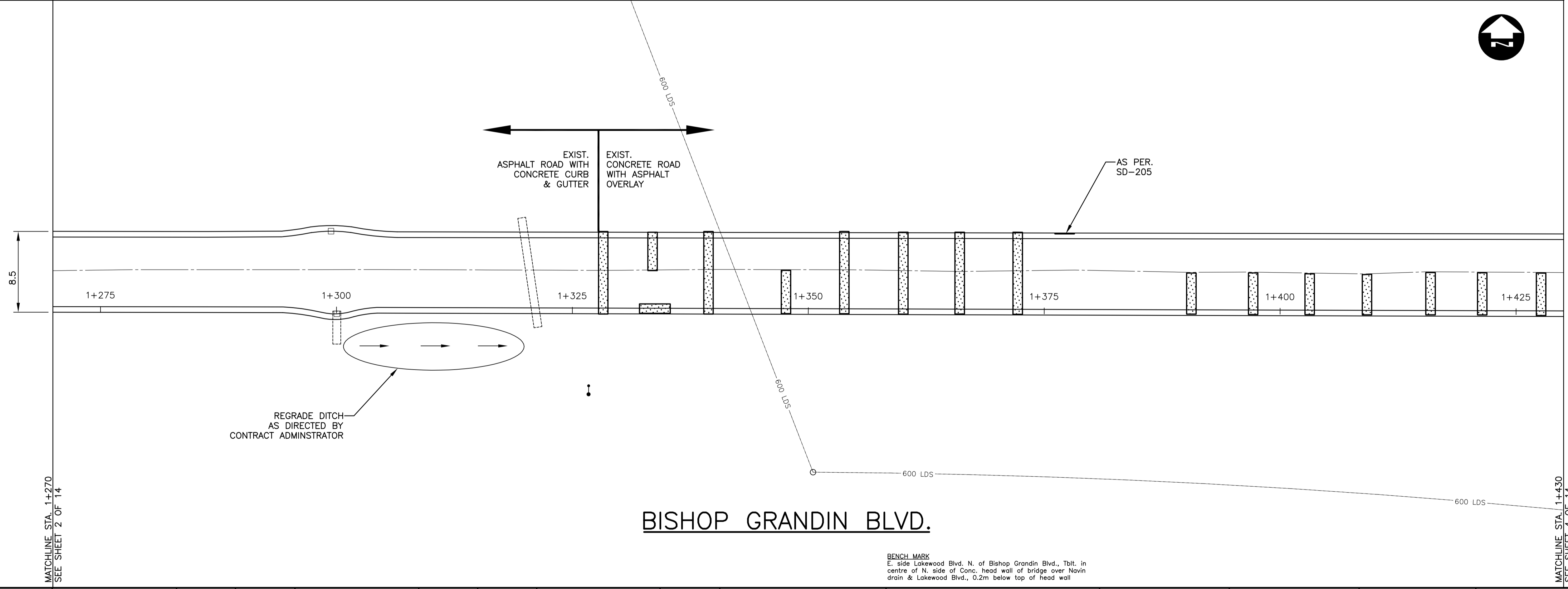


MOUNTABLE CURB & GUTTER
N.T.S.

METRIC
WHOLE NUMBERS INDICATE MILLIMETRES
DECIMALIZED NUMBERS INDICATE METRES

WARNING

- IF POWER EQUIPMENT OR EXPLOSIVES ARE TO BE USED FOR EXCAVATION ON THIS PROJECT THE CONTRACTOR MUST:
1. NOTIFY THE GAS COMPANY OF THE PROPOSED LOCATION OF EXCAVATION.
 2. TAKE PRECAUTION TO AVOID DAMAGE TO GAS COMPANY INSTALLATIONS
SEE PROVINCIAL REGULATION 210/72 FOR DETAILS



BISHOP GRANDIN BLVD.

BENCH MARK
E. side Lakewood Blvd. N. of Bishop Grandin Blvd., Tblt. in centre of N. side of Conc. head wall of bridge over Navin drain & Lakewood Blvd., 0.2m below top of head wall

150 mm W.M.	WATERMAIN	150 mm W.M.	HYDRO	150 mm W.M.	WATERMAIN	150 mm W.M.	
Hydrant	HYDRANT	Concrete	M.T.S.	Hydrant	HYDRANT	Concrete	
Valve	VALVE	Asphalt	CONCRETE	Valve	VALVE	Asphalt	
300 mm L.D.S.	LAND DRAINAGE SEWER	Planing	ASPHALT	300 mm L.D.S.	LAND DRAINAGE SEWER	Planing	
250 mm W.W.S.	WASTE WATER SEWER	Sidewalk	250 mm W.W.S.	250 mm W.W.S.	WASTE WATER SEWER	Sidewalk	
Manhole	MANHOLE	Paving Stones	Manhole	Manhole	MANHOLE	Paving Stones	
Catch Basin	CATCH BASIN	Partial Depth Repair	Catch Basin	Catch Basin	CATCH BASIN	Partial Depth Repair	
Curb Inlet	CURB INLET	Property Line	Curb Inlet	Curb Inlet	CURB INLET	Property Line	
Junctions	JUNCTIONS	Survey Bar	Junctions	Junctions	JUNCTIONS	Survey Bar	
Culvert	CULVERT	Paraplegic Ramp	Culvert	Culvert	CULVERT	Paraplegic Ramp	
Gas	GAS		Gas	Gas	GAS		
Existing Legend-Plan	EXISTING	Proposed Legend-Plan	PROPOSED	Existing Legend-Profile	EXISTING	Proposed Legend-Profile	PROPOSED

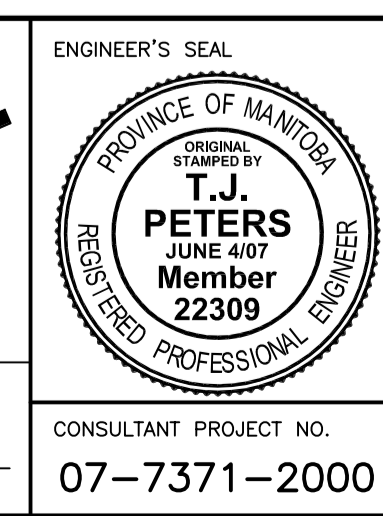
UNDERGROUND STRUCTURES

SUPPLY U/G STRUCTURES COMMITTEE DATE

NOTE:
LOCATION OF UNDERGROUND STRUCTURES AS SHOWN ARE BASED ON THE BEST INFORMATION AVAILABLE. BUT NO GUARANTEE IS GIVEN THAT ALL EXISTING UTILITIES ARE SHOWN OR THAT THE GIVEN LOCATIONS ARE EXACT. CONFIRMATION OF EXISTENCE AND EXACT LOCATION OF ALL SERVICES MUST BE OBTAINED FROM THE INDIVIDUAL UTILITIES BEFORE PROCEEDING WITH CONSTRUCTION.

B.M. ELEV.	55-017	232.537m	
DESIGNED BY	TJP		
DRAWN BY	PMW		
CHECKED BY	DBW		
APPROVED BY	ORIGINAL SIGNED BY: DPK		
HOR. SCALE	1:250		
VERTICAL	1:10		
RELEASING FOR CONSTRUCTION	ORIGINAL SIGNED BY: KEN TURKO		
DATE	MAY 2007		
NO. REVISIONS	DATE	BY	
2	ISSUED FOR TENDER	08/04/07	TJP
1	ISSUED FOR REVIEW	05/16/07	TJP

DESIGNED BY	TJP
DRAWN BY	PMW
CHECKED BY	DBW
APPROVED BY	ORIGINAL SIGNED BY: DPK
HOR. SCALE	1:250
VERTICAL	1:10
RELEASING FOR CONSTRUCTION	ORIGINAL SIGNED BY: KEN TURKO
DATE	MAY 2007



THE CITY OF WINNIPEG
PUBLIC WORKS DEPARTMENT

BISHOP GRANDIN E. BOUND
ST. ANNE'S RD. TO LAKEWOOD BLVD.
MAJOR REHABILITATION
STA: 1+270 TO 1+430

CITY DRAWING NUMBER
P-3284-3
SHEET 3 OF 14

CONSULTANT PROJECT NO.
07-7371-2000