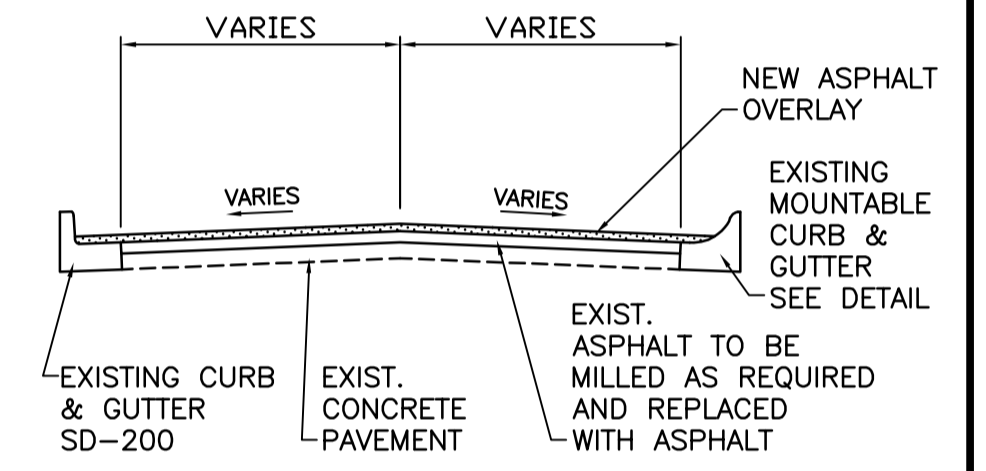
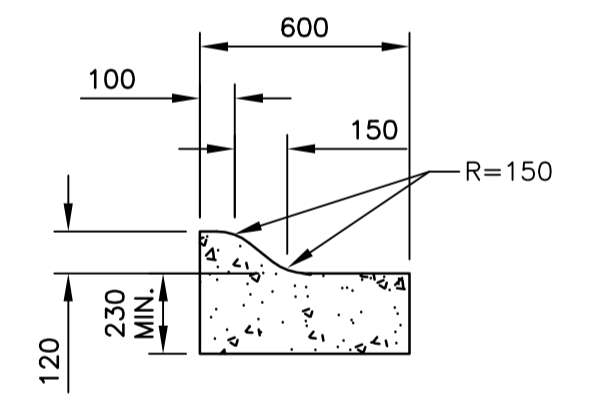


L = 1450 m W = 8.5 m A = 15375 m²
 TYPE - MAJOR REHABILITATION

- CONSTRUCTION NOTES:**
1. CONTRACTOR SHALL TAKE PRECAUTIONARY STEPS TO AVOID DAMAGE FROM CONSTRUCTION ACTIVITIES TO EXISTING BOULEVARDS AND TREES WITHIN THE LIMITS OF CONSTRUCTION.
 2. LOCATION OF EXISTING SERVICES ARE TO BE CONFIRMED IN THE FIELD BY THE CONTRACTOR.
 3. TIE-INS TO BE VERIFIED IN THE FIELD BY THE CONTRACT ADMINISTRATOR.
 4. BOULEVARD REPLACEMENT TO BE FINALIZED IN THE FIELD AS DIRECTED BY THE CONTRACT ADMINISTRATOR.
 5. PLACE EXISTING ASPHALT OVERLAY WITHIN CONTRACT LIMITS TO DEPTH INDICATED BY THE CONTRACT ADMINISTRATOR. NOT ALL AREAS WILL REQUIRE PLANING.
 6. CURB AND GUTTER REPLACEMENT TO BE FINALIZED IN THE FIELD AS DIRECTED BY THE CONTRACT ADMINISTRATOR.
 7. JOINT AND SLAB REPAIRS TO BE FINALIZED IN THE FIELD AS DIRECTED BY THE CONTRACT ADMINISTRATOR.
 8. STATIONING ALONG SOUTH GUTTER UNLESS NOTED OTHERWISE.
 9. GRANULAR BOULEVARD TO BE REGRADED AS DIRECTED BY THE CONTRACT ADMINISTRATOR.



CONCRETE ROAD WITH CONCRETE CURB & GUTTER
 N.T.S.

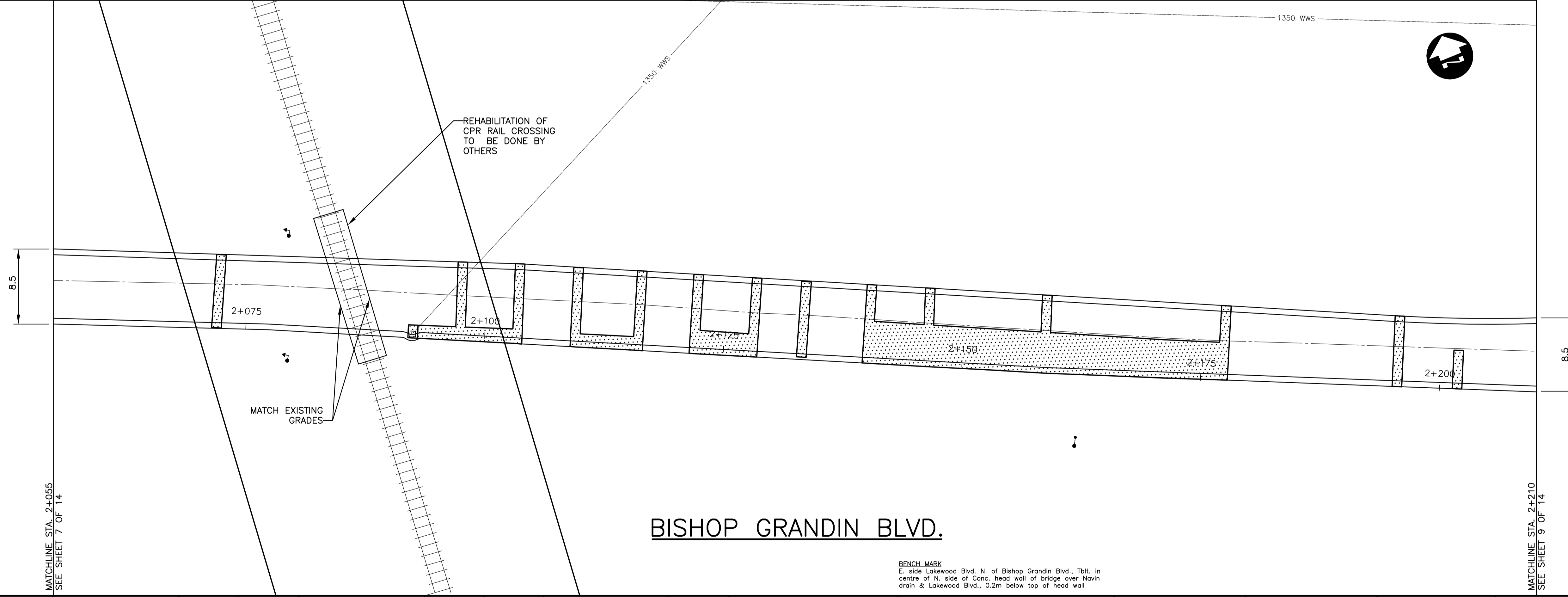


MOUNTABLE CURB & GUTTER
 N.T.S.

METRIC
 WHOLE NUMBERS INDICATE MILLIMETRES
 DECIMALIZED NUMBERS INDICATE METRES

WARNING

- IF POWER EQUIPMENT OR EXPLOSIVES ARE TO BE USED FOR EXCAVATION ON THIS PROJECT THE CONTRACTOR MUST:
1. NOTIFY THE GAS COMPANY OF THE PROPOSED LOCATION OF EXCAVATION.
 2. TAKE PRECAUTION TO AVOID DAMAGE TO GAS COMPANY INSTALLATIONS
 SEE PROVINCIAL REGULATION 210/72 FOR DETAILS



BISHOP GRANDIN BLVD.

BENCH MARK
 E. side Lakewood Blvd. N. of Bishop Grandin Blvd., Tblt. in centre of N. side of Conc. head wall of bridge over Navin drain & Lakewood Blvd., 0.2m below top of head wall

150 mm W.M.	WATERMAIN	150 mm W.M.	HYDRO	150 mm W.M.	WATERMAIN	150 mm W.M.
Hydrant	HYDRANT	Hydrant	M.T.S.	Hydrant	HYDRANT	Hydrant
Valve	VALVE	Valve	CONCRETE	Valve	VALVE	Valve
300 mm L.D.S.	LAND DRAINAGE SEWER	300 mm L.D.S.	ASPHALT	300 mm L.D.S.	LAND DRAINAGE SEWER	300 mm L.D.S.
250 mm W.W.S.	WASTE WATER SEWER	250 mm W.W.S.	PLANING	250 mm W.W.S.	WASTE WATER SEWER	250 mm W.W.S.
Manhole	MANHOLE	Manhole	SIDEWALK	Manhole	MANHOLE	Manhole
Catch Basin	CATCH BASIN	Catch Basin	PAVING STONES	Catch Basin	CATCH BASIN	Catch Basin
Curb Inlet	CURB INLET	Curb Inlet	PARTIAL DEPTH REPAIR	Curb Inlet	CURB INLET	Curb Inlet
Junctions	JUNCTIONS	Junctions	PROPERTY LINE	Junctions	JUNCTIONS	Junctions
Culvert	CULVERT	Culvert	SURVEY BAR	Culvert	CULVERT	Culvert
Gas	GAS	Gas	PARAPLEGIC RAMP	Gas	GAS	Gas
EXISTING	LEGEND-PLAN	PROPOSED	EXISTING	LEGEND-PLAN	PROPOSED	EXISTING
				LEGEND-PROFILE		

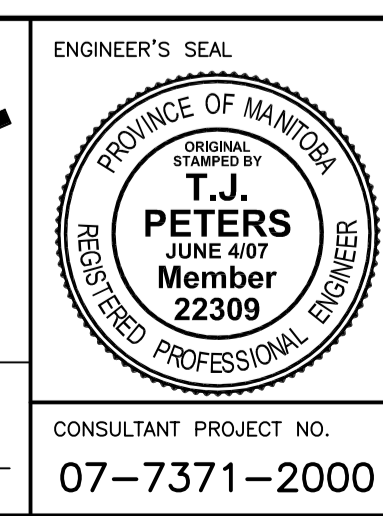
UNDERGROUND STRUCTURES

SUPV. U/G STRUCTURES COMMITTEE DATE

NOTE:
 LOCATION OF UNDERGROUND STRUCTURES AS SHOWN ARE BASED ON THE BEST INFORMATION AVAILABLE. BUT NO GUARANTEE IS GIVEN THAT ALL EXISTING UTILITIES ARE SHOWN OR THAT THE GIVEN LOCATIONS ARE EXACT. CONFIRMATION OF EXISTENCE AND EXACT LOCATION OF ALL SERVICES MUST BE OBTAINED FROM THE INDIVIDUAL UTILITIES BEFORE PROCEEDING WITH CONSTRUCTION.

B.M. ELEV.	55-017	232.537m
2	ISSUED FOR TENDER	08/04/07 TJP
1	ISSUED FOR REVIEW	05/16/07 TJP
NO.	REVISIONS	DATE BY

DESIGNED BY	TJP
DRAWN BY	PMW
CHECKED BY	DBW
APPROVED BY	ORIGINAL SIGNED BY: DPK
HOR. SCALE	1:250
VERTICAL	1:10
DATE	MAY 2007



THE CITY OF WINNIPEG PUBLIC WORKS DEPARTMENT

BISHOP GRANDIN E. BOUND
 ST. ANNE'S RD. TO LAKEWOOD BLVD.
 MAJOR REHABILITATION
 STA: 2+055 TO STA: 2+210

CITY DRAWING NUMBER **P-3284-8**
 SHEET **8** OF **14**

CONSULTANT PROJECT NO. **07-7371-2000**