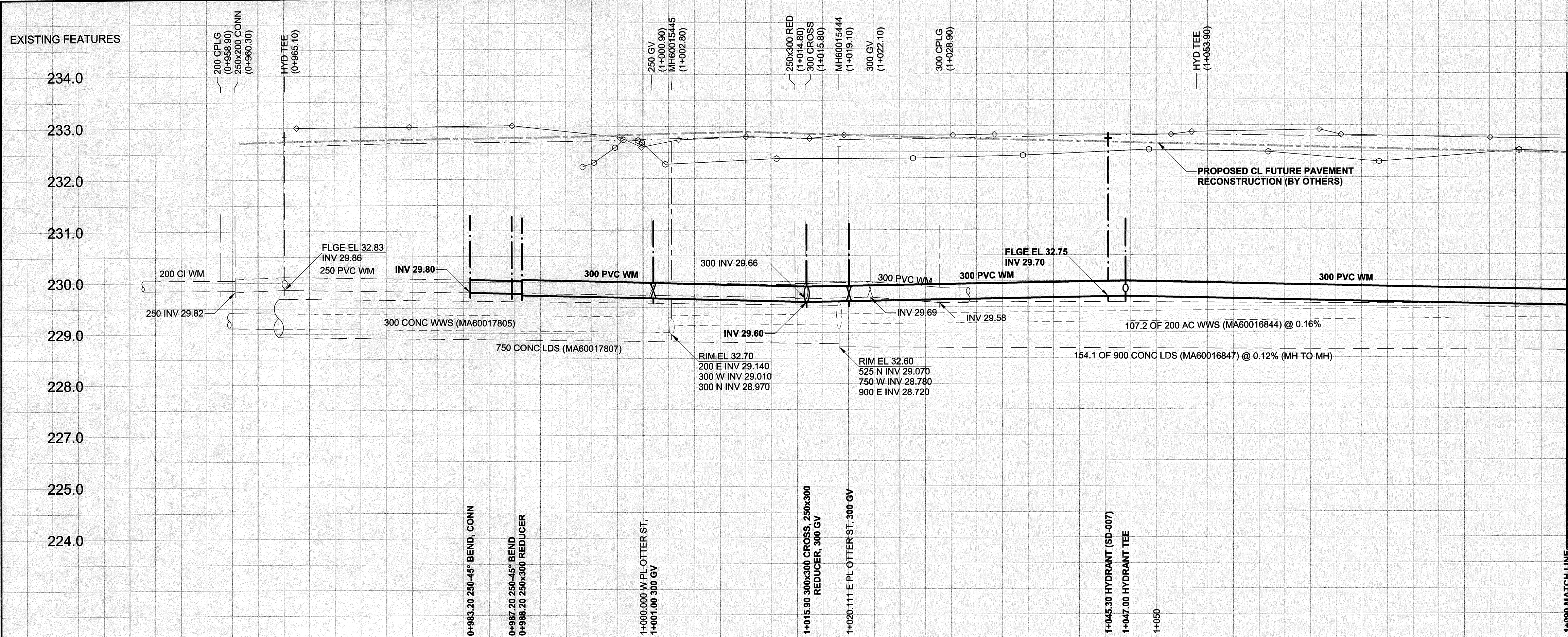


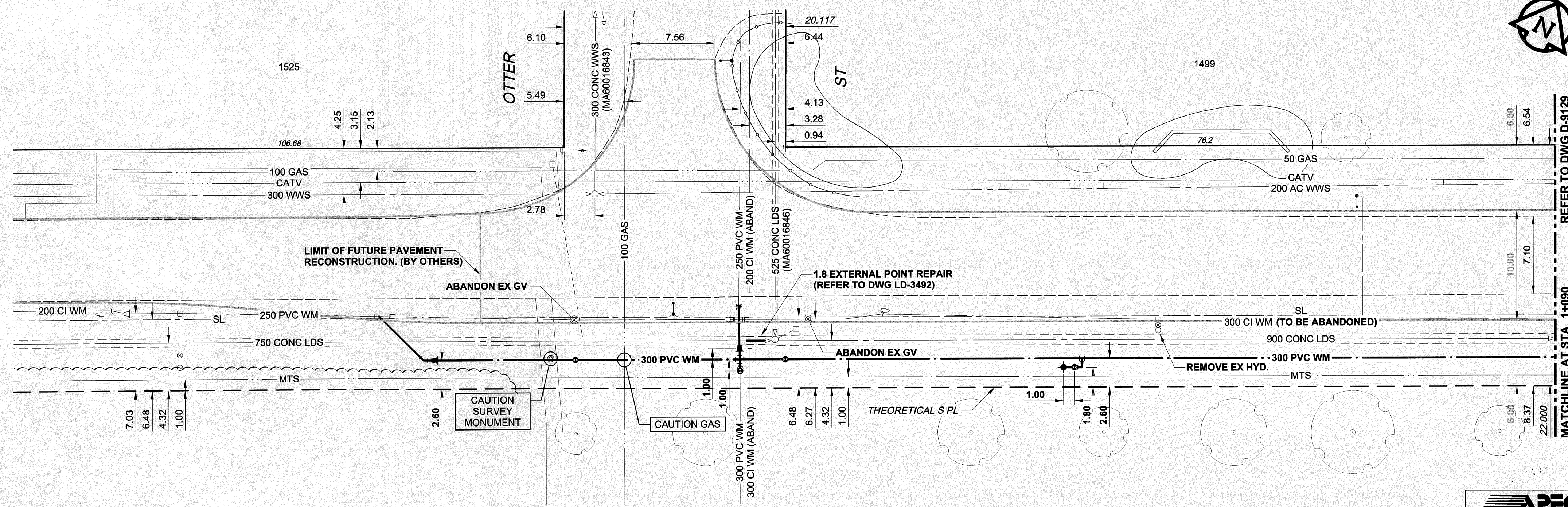
D SIZE 22" x 34" (598mm x 864mm)

PLOT: 3/22/2007 8:30:02 AM

UMA AECOM REVIEW IDR 3/22/2007 8:30:02 AM



BUFFALO PLACE



WATER SERVICE INFORMATION						
ADDRESS	DIST TO PROPERTY	SIZE (mm) & TYPE	SHORT & LONG MEASUREMENT	CORPORATION LOCATION	REMARKS	
1498 BUFFALO PL (FIRE)	3.00	150 PVC	19.85 S OF 1ST HYD N OF BUFFALO PL	OPP VALVE	RECONN TO NEW MAIN CPLG TO 150 CI 1.00 E OF SC	
1499 BUFFALO PL (INDUSTRIAL)	0.35	50 COPPER	19.40 S OF 1ST HYD N OF BUFFALO PL	0.85 N OF SC	RECONN TO NEW MAIN UNION 0.80 SE OF CORP	

SEWER SERVICE INFORMATION			
ADDRESS	SIZE PL TIE (SHORT/LONG)	JUNCTION TIE	REMARKS
1498 BUFFALO PL			NO INFO
1499 BUFFALO PL	150	30.10 1ST MH E OF OTTER ST	

- CONSTRUCTION NOTES:**
1. EXPOSE EXISTING WATERMAIN & CONFIRM INVERTS PRIOR TO CONSTRUCTION.
 2. CONFIRM LOCATION OF ALL SERVICES IN THE FIELD.
 3. INSTALL WATERMAIN BY TRENCHLESS METHODS.
 4. TRENCHES AND EXCAVATIONS WITHIN 1.0m OF A PAVED AREA INCLUDING SIDEWALKS SHALL BE CLASS 3 BACKFILL.
 5. ALL MATERIALS SHALL CONFORM TO THE CITY OF WINNIPEG STANDARD CONSTRUCTION SPECIFICATIONS.
 6. REPLACE EXISTING SERVICES FROM PROPOSED WATERMAIN TO PL UNLESS OTHERWISE SHOWN ON DRAWING.
 7. NOTIFY ALL AFFECTED RESIDENTS AND BUSINESSES 24 HOURS IN ADVANCE OF ANY WATER SHUTDOWNS OR DISRUPTION OF SERVICE.

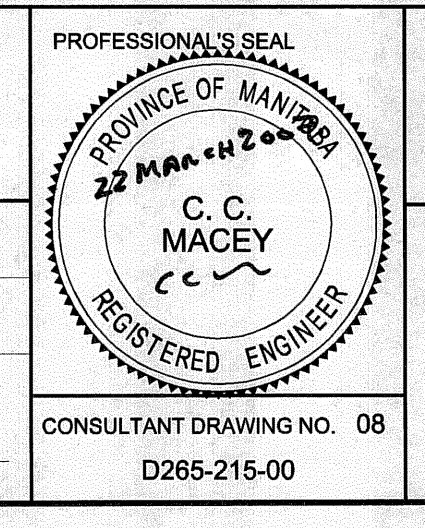
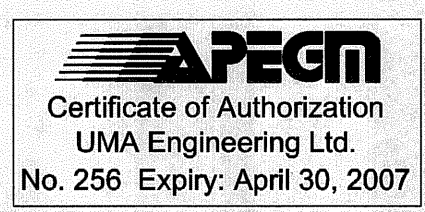
WARNING
 IF POWER EQUIPMENT OR EXPLOSIVES ARE TO BE USED FOR EXCAVATION ON THIS PROJECT, THE CONTRACTOR MUST:
 1) NOTIFY THE GAS COMPANY OF THE PROPOSED LOCATION OF EXCAVATION.
 2) TAKE PRECAUTION TO AVOID DAMAGE TO GAS COMPANY INSTALLATIONS.
 SEE PROVINCIAL REGULATION 140/92 FOR DETAILS

EXISTING	LEGEND - PLAN	NEW	EXISTING	LEGEND - PLAN	NEW	EXISTING	LEGEND - PROFILE	NEW
150 WM	WATERMAIN	150 WM	CURB STOP	150 WM	WATERMAIN	150 WM	WATERMAIN	150 WM
300 LDS	LAND DRAINAGE SEWER	300 LDS	REDUCER	300 LDS	LAND DRAINAGE SEWER	300 LDS	HYDRANT VALVE	300 LDS
250 WWS	WASTE WATER SEWER	250 WWS	COUPLING	250 WWS	WASTE WATER SEWER	250 WWS	VALVE	250 WWS
MANHOLE	MANHOLE	ANODE	ANODE	MANHOLE	MANHOLE	ANODE	ANODE	MANHOLE
CATCH BASIN	CATCH BASIN	HYDRO	HYDRO	CATCH BASIN	CATCH BASIN	HYDRO	HYDRO	CATCH BASIN
CURB INLET	CURB INLET	MTS	MTS	CURB INLET	CURB INLET	MTS	MTS	CURB INLET
CULVERT	CULVERT	GAS	GAS	CULVERT	CULVERT	GAS	GAS	CULVERT
PIPE ABANDONMENTS	PIPE ABANDONMENTS	TESTHOLE	TESTHOLE	PIPE ABANDONMENTS	PIPE ABANDONMENTS	TESTHOLE	TESTHOLE	PIPE ABANDONMENTS
SURVEY BAR	SURVEY BAR	LAMP STANDARD	LAMP STANDARD	SURVEY BAR	SURVEY BAR	LAMP STANDARD	LAMP STANDARD	SURVEY BAR
		TREE	TREE			TREE	TREE	

LOCATION APPROVED UNDERGROUND STRUCTURES
 SUPR. U/G STRUCTURES DATE COMMITTEE
 NOTE: LOCATION OF UNDERGROUND STRUCTURES AS SHOWN ARE BASED ON THE BEST INFORMATION AVAILABLE. BUT NO GUARANTEE IS GIVEN THAT ALL EXISTING UTILITIES ARE SHOWN OR THAT THE GIVEN LOCATIONS ARE EXACT. CONFIRMATION OF EXISTENCE AND EXACT LOCATION OF ALL SERVICES MUST BE OBTAINED FROM THE INDIVIDUAL UTILITIES BEFORE PROCEEDING WITH CONSTRUCTION.

BM 65-006	Tht. in S. wall UMA Ltd. Building No. 1479
ELEV 233.988m	Buffalo Pl. 4.1m W. of S.E. Cor. of Bldg., & 0.6m below black brickwork.
0	ISSUED FOR CONSTRUCTION 07/03/22 ADL
NO.	REVISIONS YY/MM/DD BY

DESIGNED BY	MJR	CHECKED BY	A. Delawie
DRAWN BY	ADL	APPROVED BY	[Signature]
HOR. SCALE	1:250	RELEASED FOR CONSTRUCTION	[Signature]
VERT. SCALE	1:50	DATE	07/03/22



THE CITY OF WINNIPEG WATER AND WASTE DEPARTMENT

2007 Watermain and Sewer Renewals
 Contract 26
 Buffalo Place
 Otter Street to Match Line 1+090

SHEET 08 OF 10
 CITY DRAWING NUMBER
D-9128
 REV 0

BID OPPORTUNITY NO. 223-2007