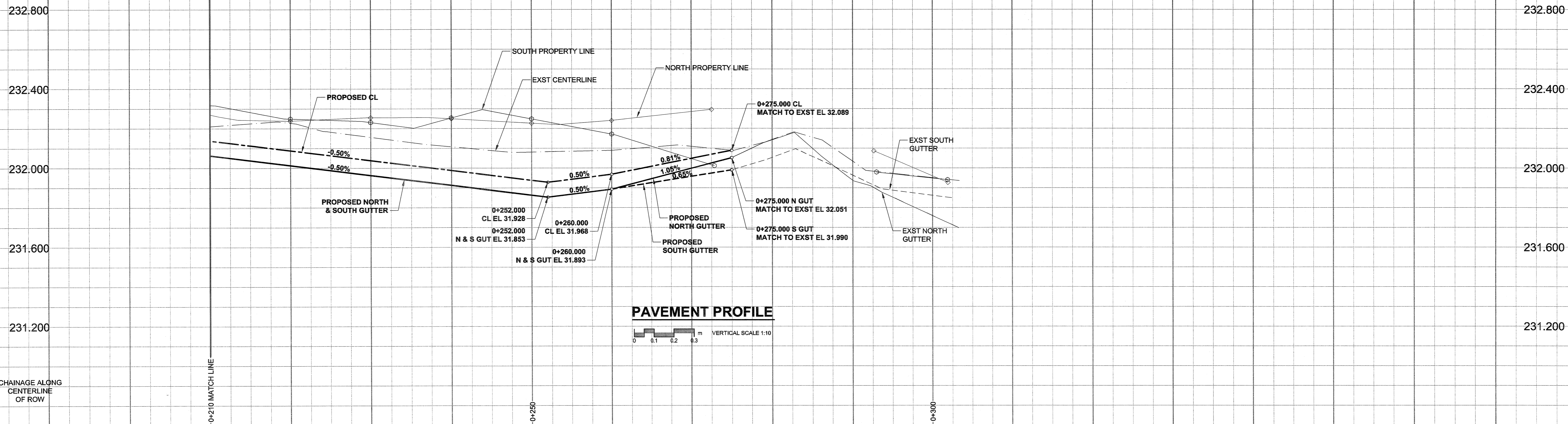
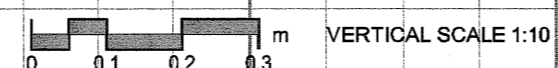


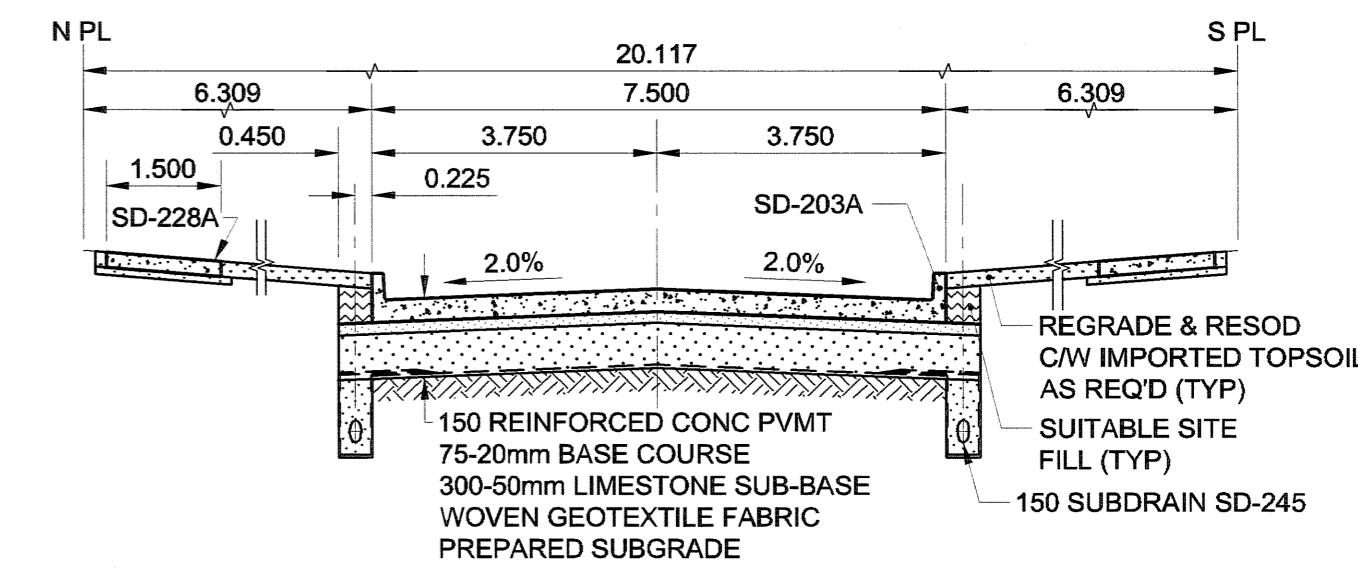
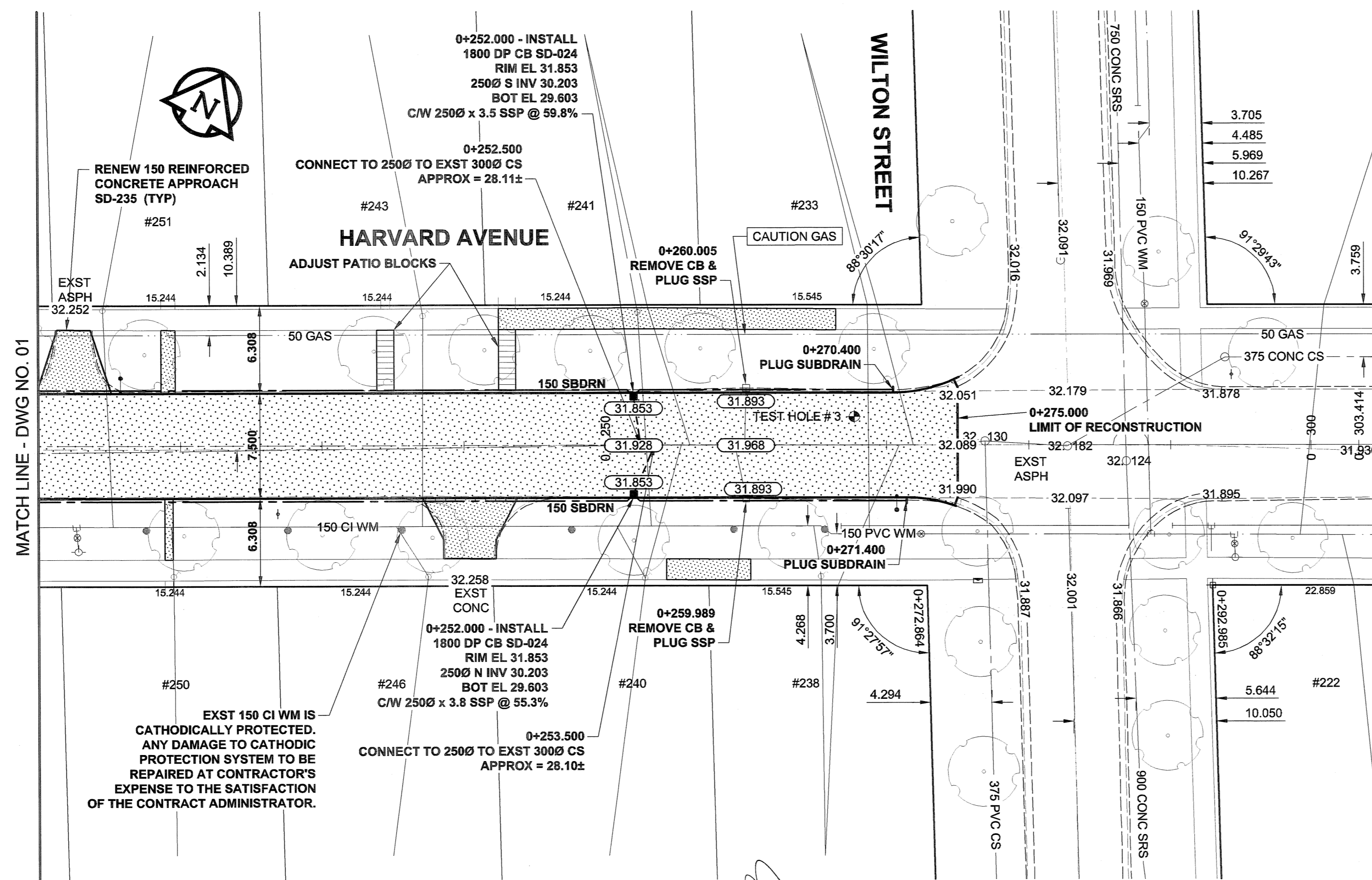
A1 SIZE 23.4" x 33.1" (594mm x 841mm)



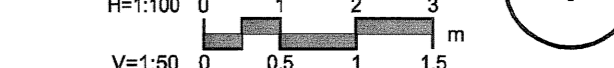
PAVEMENT PROFILE



PLOT: 07/03/28 3:09:55 PM



PVMT SECTION



HARVARD AVENUE PAVEMENT RECONSTRUCTION SECTION

- NOTES**
- ADJUST MH AND CB RIMS TO NEW GRADES.
 - CONTRACTOR TO EXERCISE CAUTION WHEN INSTALLING 150 SUBDRAIN TO PREVENT CROSSING CONFLICTS WITH EXST GAS SERVICES.
 - LAMP STANDARDS, HYDRO POLES, AND ANCHORS MAY REQUIRE TEMPORARY SUPPORT/REMOVAL OR REPLACEMENT AT THE CONTRACTOR'S EXPENSE.
 - CONTRACTOR SHALL TAKE PRECAUTIONARY STEPS TO PROTECT EXISTING BOULEVARD TREES WITHIN THE LIMITS OF CONSTRUCTION FROM DAMAGE FROM CONSTRUCTION ACTIVITIES AS OUTLINED IN THE SPECIFICATIONS.
 - CONTRACTOR SHALL REGRADE EXST PRIVATE SIDEWALKS. LIMITS TO BE DETERMINED.
 - THE LOCATION OF ALL SERVICES TO BE CONFIRMED IN THE FIELD BY THE CONTRACTOR.
 - ADD 200.00m TO ABBREVIATED ELEVATIONS TO OBTAIN GEODETIC ELEVATIONS.
 - CURB HEIGHT TO BE REDUCED TO 40mm AT PRIVATE APPROACHES SD-202B.



METRIC

WHOLE NUMBERS INDICATE MILLIMETRES
DECIMALIZED NUMBERS INDICATE METRES

NATURAL GAS	○	MANHOLE	●	TJ001	MONITORING STATION
COMMUNICATION	□	CATCH BASIN / CATCH PIT	■		ANODE
HYDRO	△	C & G INLET WITH BOX	◻		CONCRETE PAVEMENT
CATV	◇	TREE	○		ASPHALT PAVEMENT
TRAFFIC SIGNALS	⊕	TEST HOLE	⊕		CONC. SIDEWALK/MEDIAN
LAND DRAINAGE SEWER	—	PROPERTY LINE	—		PAVING STONE
SANITARY/COMBINED SEWER	—	SURVEY BAR	—		GRAVEL
SSP/DCP	—	FENCE	—		CURB RAMP
WATERMAIN	—	BOC/EOPAVT	—		PAVT PLANING/REMOVAL
SUBDRAIN	—	ELEVATION	(33.100)		
DITCH	—				
EXISTING	LEGEND - PLAN	NEW	EXISTING	LEGEND - PLAN	NEW

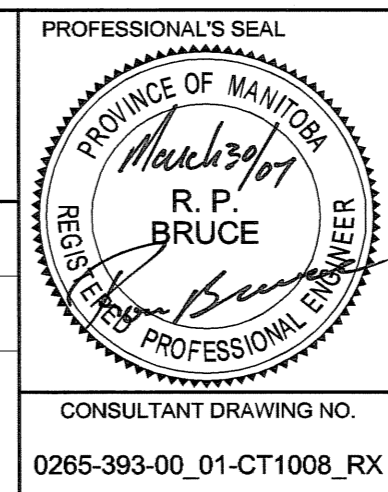
LOCATION APPROVED UNDERGROUND STRUCTURES

NOTE:
LOCATION OF UNDERGROUND STRUCTURES AS SHOWN ARE BASED ON THE BEST INFORMATION AVAILABLE. BUT NO GUARANTEE IS GIVEN THAT ALL EXISTING UTILITIES ARE SHOWN OR THAT THE GIVEN LOCATIONS ARE EXACT. CONFIRMATION OF EXISTENCE AND EXACT LOCATION OF ALL SERVICES MUST BE OBTAINED FROM THE INDIVIDUAL UTILITIES BEFORE PROCEEDING WITH CONSTRUCTION.

SM 52-039	ELEV 232.480m
ISSUED FOR CONSTRUCTION	07/03/30 KLC
NO. REVISIONS	YYMMDD BY

UMA AECOM

DESIGNED BY	RM	CHECKED BY	WRS
DRAWN BY	KLC	APPROVED BY	M
HOR. SCALE	1:250	RELEASED FOR CONSTRUCTION	DATE 07/03/30
VERT. SCALE	AS SHOWN	DATE	07/03/30



THE CITY OF WINNIPEG
PUBLIC WORKS DEPARTMENT
TRANSPORTATION ENGINEERING DIVISION

**HARVARD AVENUE
ROCKWOOD STREET TO WILTON STREET
RECONSTRUCTION**

CITY DRAWING NUMBER: N/A
SHEET 5 OF 8
DRAWING No. 05
REV 0

HORIZONTAL AND VERTICAL ALIGNMENT
FROM STA 0+210 TO WILTON ST

BID OPPORTUNITY NO. 224-2007