

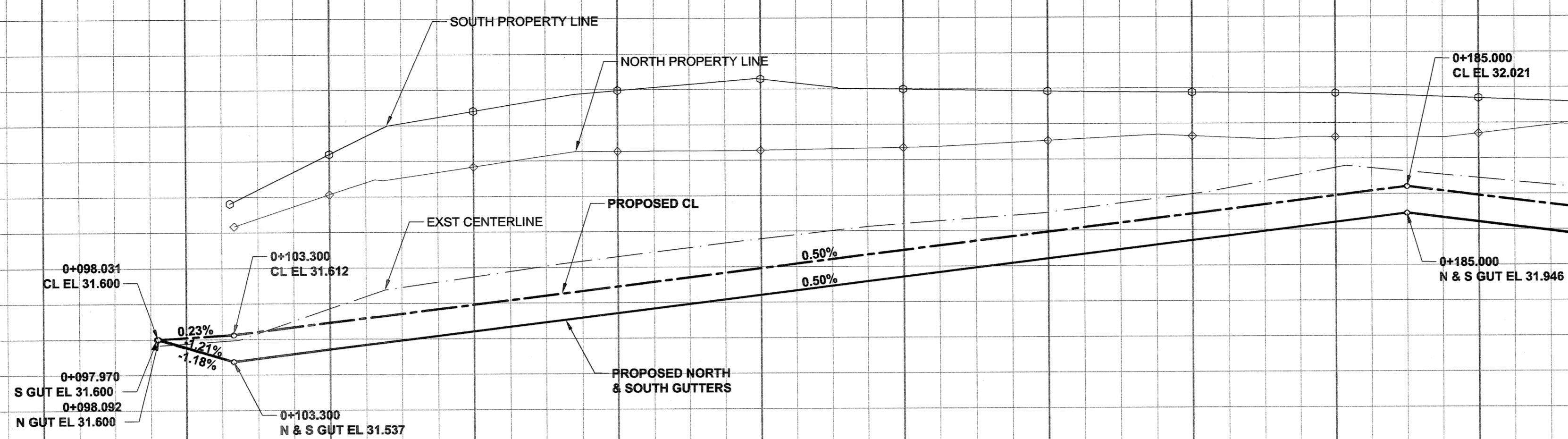
A1 SIZE 23.4" x 33.1" (594mm x 841mm)

PLOT: 07/03/28 3:20:58 PM

UMA AECOM REVIEW DRAFT CHK
UMA FILE NAME: 0265-393-00_01-CT1004_RX.dwg Saved By: ccooper

232.800
232.400
232.000
231.600
231.200

232.800
232.400
232.000
231.600
231.200

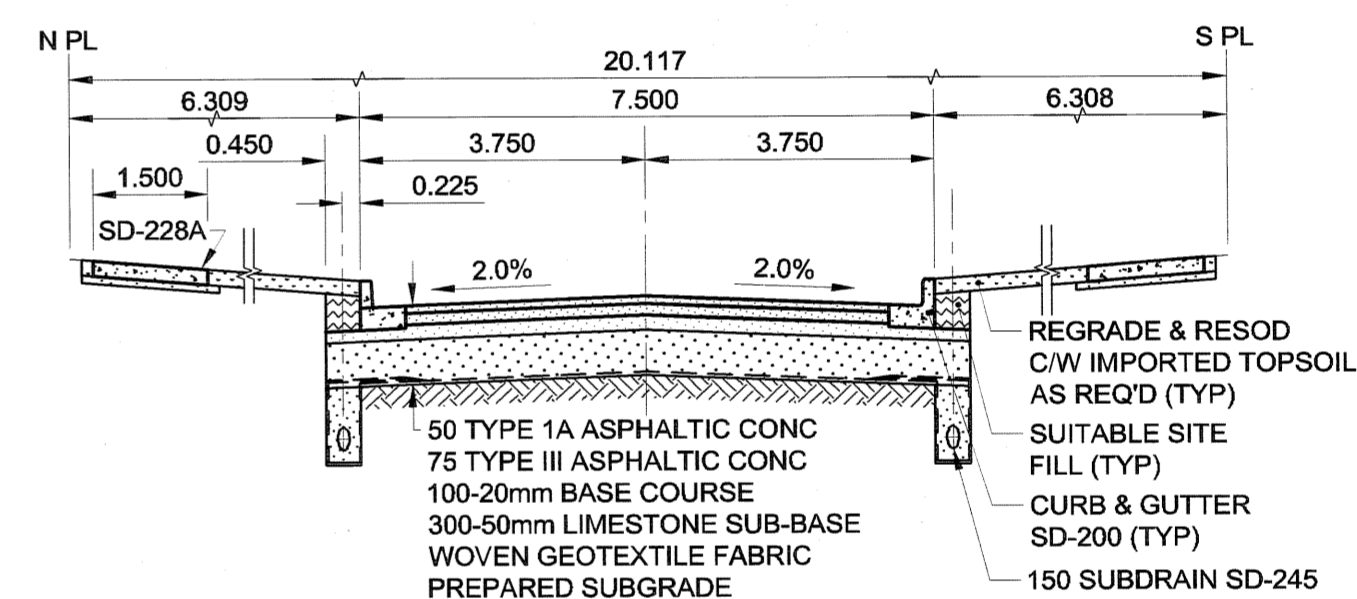
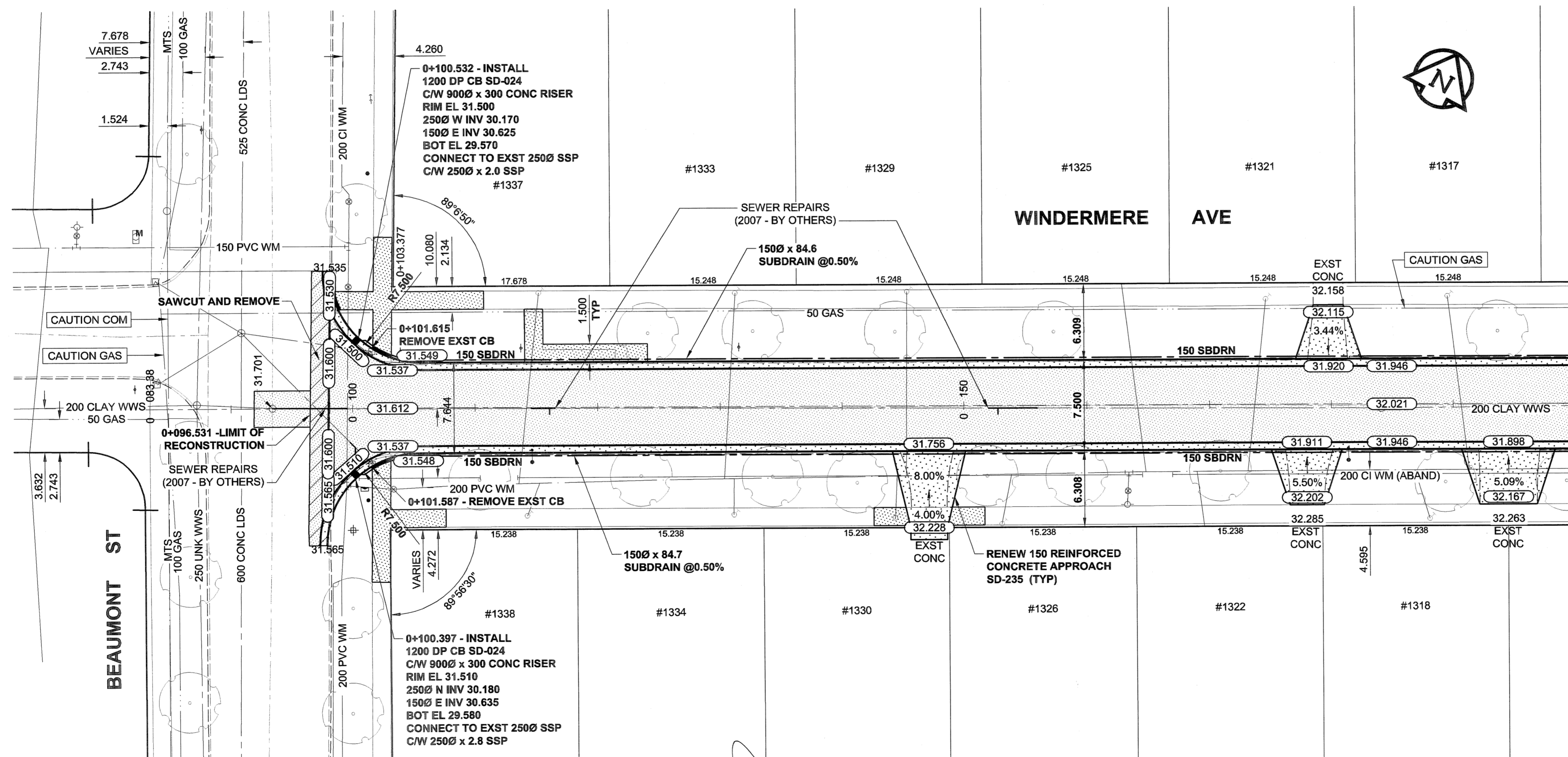


PAVEMENT PROFILE



CHAINAGE ALONG CENTERLINE OF ROW

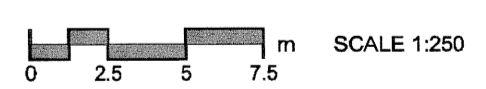
0+200 MATCH LINE



PVMT SECTION

WINDERMERE AVENUE PAVEMENT RECONSTRUCTION SECTION

- NOTES**
1. ADJUST MH AND CB RIMS TO NEW GRADES.
 2. CONTRACTOR TO EXERCISE CAUTION WHEN INSTALLING 150 SUBDRAIN TO PREVENT CROSSING CONFLICTS WITH EXST GAS SERVICES.
 3. LAMP STANDARDS, HYDRO POLES, AND ANCHORS MAY REQUIRE TEMPORARY SUPPORT/REMOVAL OR REPLACEMENT AT THE CONTRACTOR'S EXPENSE.
 4. CONTRACTOR SHALL TAKE PRECAUTIONARY STEPS TO PROTECT EXISTING BOULEVARD TREES WITHIN THE LIMITS OF CONSTRUCTION FROM DAMAGE FROM CONSTRUCTION ACTIVITIES AS OUTLINED IN THE SPECIFICATIONS.
 4. CONTRACTOR SHALL REGRADE/RENEW EXST PRIVATE SIDEWALKS TO LIMITS AS SHOWN. RENEW SIDEWALKS WITH CONCRETE UNLESS NOTED OTHERWISE.
 6. THE LOCATION OF ALL SERVICES TO BE CONFIRMED IN THE FIELD BY THE CONTRACTOR.
 7. ADD 200.000m TO ABBREVIATED ELEVATIONS TO OBTAIN GEODETIC ELEVATIONS.
 8. CURB HEIGHT TO BE REDUCED TO 40mm AT PRIVATE APPROACHES SD-202B.



METRIC
WHOLE NUMBERS INDICATE MILLIMETRES
DECIMALIZED NUMBERS INDICATE METRES

	NATURAL GAS		MANHOLE		CONCRETE PAVEMENT
	COMMUNICATION		CATCH BASIN / CATCH PIT		ASPHALT PAVEMENT
	HYDRO		C & G INLET WITH BOX		CONC. SIDEWALK/MEDIAN
	CATV		TREE		PAVING STONE
	TRAFFIC SIGNALS		TEST HOLE		GRAVEL
	LAND DRAINAGE SEWER		PROPERTY LINE		CURB RAMP
	SANITARY/COMBINED SEWER		SURVEY BAR		PAVT PLANING/REMOVAL
	SSP/DCP		FENCE		
	WATERMAIN		BOC/EOPAVT		
	SUBDRAIN		ELEVATION		
	DITCH				
	EXISTING		LEGEND - PLAN		EXISTING
	NEW		LEGEND - PLAN		NEW

LOCATION APPROVED
UNDERGROUND STRUCTURES

AS SHOWN ARE BASED ON THE BEST INFORMATION AVAILABLE. BUT NO GUARANTEE IS GIVEN THAT ALL EXISTING UTILITIES ARE SHOWN OR THAT THE GIVEN LOCATIONS ARE EXACT. CONFIRMATION OF EXISTENCE AND EXACT LOCATION OF ALL SERVICES MUST BE OBTAINED FROM THE INDIVIDUAL UTILITIES BEFORE PROCEEDING WITH CONSTRUCTION.

BM 65-016
ELEV 233.024m

0 ISSUED FOR CONSTRUCTION 07/03/30 KLC
NO. REVISIONS YY/MM/DD BY

UMA AECOM

DESIGNED BY: *WAS*
DRAWN BY: *Kic*
HOR. SCALE: 1:250
VERT. SCALE: AS SHOWN
DATE: 07/03/30

CHECKED BY: *RM*
APPROVED BY: *MM*
RELEASED FOR CONSTRUCTION: *H. L. Smith*
DATE: *Mar 29/07*

PROFESSIONAL'S SEAL

PROVINCE OF MANITOBA
REGISTERED PROFESSIONAL ENGINEER
R. P. BRUCE

CONSULTANT DRAWING NO.
0265-393-00_01-CT1004_RX

THE CITY OF WINNIPEG
PUBLIC WORKS DEPARTMENT
TRANSPORTATION ENGINEERING DIVISION

**WINDERMERE AVENUE
BEAUMONT STREET TO DEREK STREET
RECONSTRUCTION**

HORIZONTAL AND VERTICAL ALIGNMENT
FROM BEAUMONT ST TO STA 0+200

CITY DRAWING NUMBER: N/A
SHEET 6 OF 8
DRAWING No. 06
REV 0

BID OPPORTUNITY NO. 224-2007