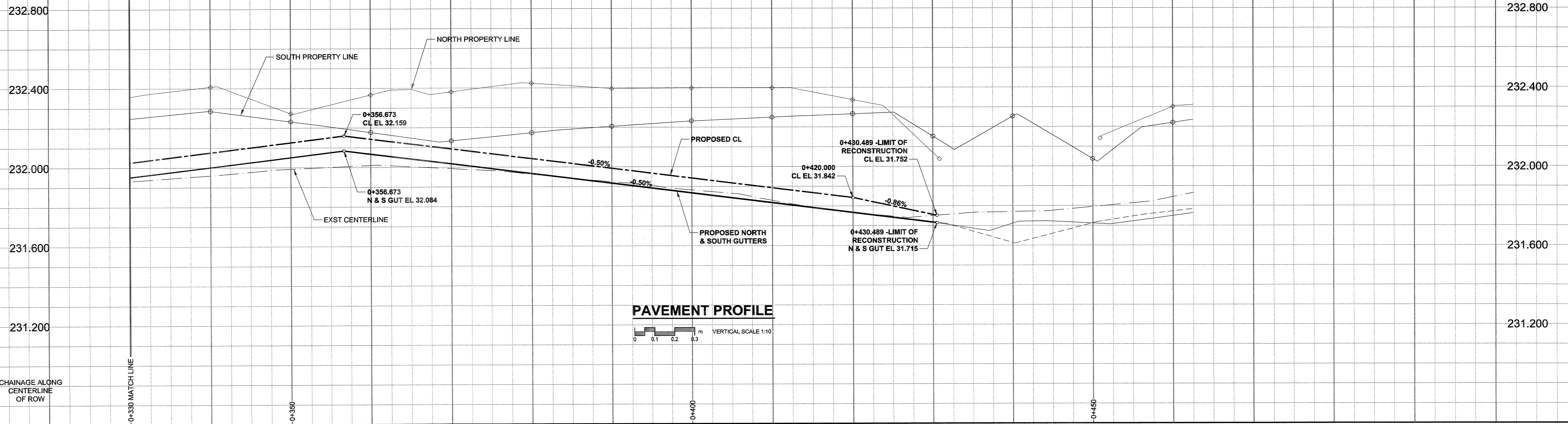
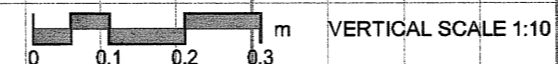


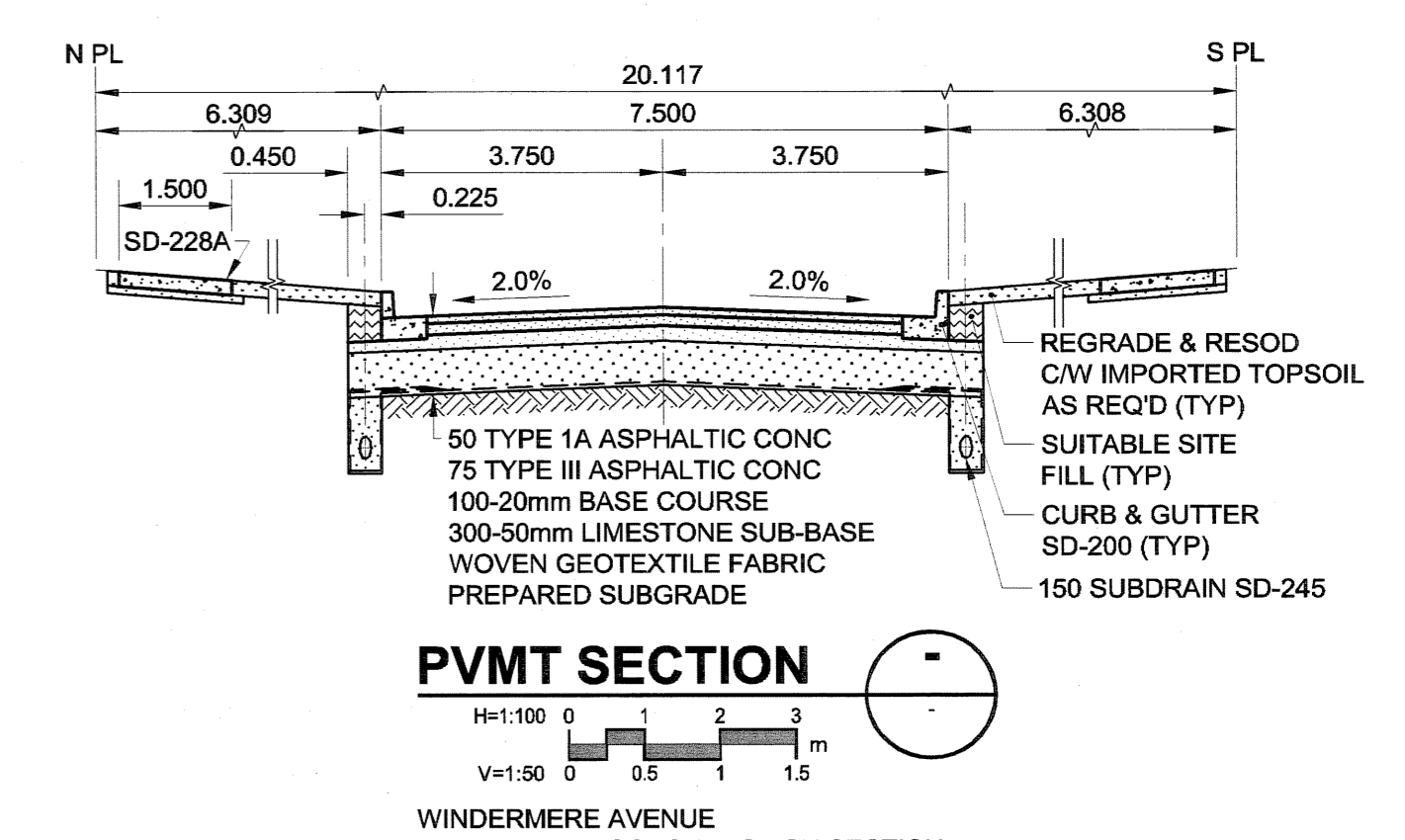
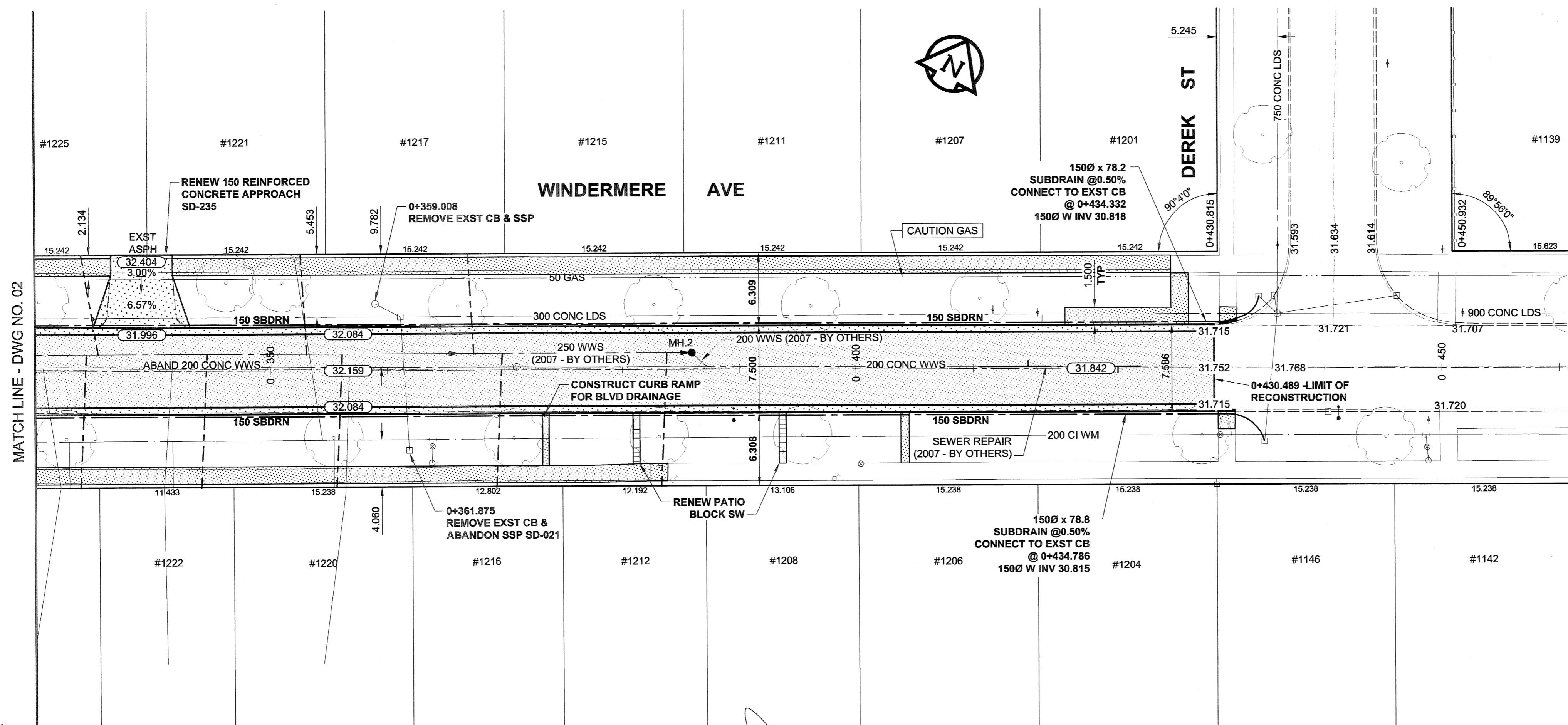
A1 SIZE 23.4" x 33.1" (594mm x 841mm)



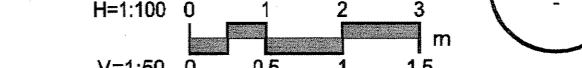
PAVEMENT PROFILE



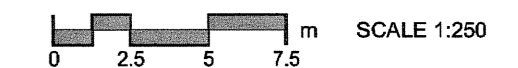
PLOT: 07/03/28 3:25:14 PM



PVMT SECTION



- NOTES
1. ADJUST MH AND CB RIMS TO NEW GRADES.
 2. CONTRACTOR TO EXERCISE CAUTION WHEN INSTALLING 150 SUBDRAIN TO PREVENT CROSSING CONFLICTS WITH EXST GAS SERVICES.
 3. LAMP STANDARDS, HYDRO POLES, AND ANCHORS MAY REQUIRE TEMPORARY SUPPORT/REMOVAL OR REPLACEMENT AT THE CONTRACTOR'S EXPENSE.
 4. CONTRACTOR SHALL TAKE PRECAUTIONARY STEPS TO PROTECT EXISTING BOULEVARD TREES WITHIN THE LIMITS OF CONSTRUCTION FROM DAMAGE FROM CONSTRUCTION ACTIVITIES AS OUTLINED IN THE SPECIFICATIONS.
 5. CONTRACTOR SHALL REGRADE/RENEW EXST PRIVATE SIDEWALKS TO LIMITS AS SHOWN. RENEW SIDEWALKS WITH CONCRETE UNLESS NOTED OTHERWISE.
 6. THE LOCATION OF ALL SERVICES TO BE CONFIRMED IN THE FIELD BY THE CONTRACTOR.
 7. ADD 200.000m TO ABBREVIATED ELEVATIONS TO OBTAIN GEODETIC ELEVATIONS.
 8. CURB HEIGHT TO BE REDUCED TO 40mm AT PRIVATE APPROACHES SD-202B.



METRIC

WHOLE NUMBERS INDICATE MILLIMETRES
DECIMALIZED NUMBERS INDICATE METRES

—	NATURAL GAS	○	MANHOLE	●	CONCRETE PAVEMENT	▨	LOCATION APPROVED UNDERGROUND STRUCTURES	BM 65-016 ELEV 233.024m
—	COMMUNICATION	□	CATCH BASIN / CATCH PIT	■	ASPHALT PAVEMENT	▩	DATE	
—	HYDRO	△	C & G INLET WITH BOX	◻	CONC. SIDEWALK/MEDIAN	▧	COMMITTEE	
—	CATV	⊕	TREE	⊙	PAVING STONE	▤	NOTE:	
—	TRAFFIC SIGNALS	⊕	TEST HOLE	⊕	GRAVEL	▦	LOCATION OF UNDERGROUND STRUCTURES AS SHOWN ARE BASED ON THE BEST INFORMATION AVAILABLE. BUT NO GUARANTEE IS GIVEN THAT ALL EXISTING UTILITIES ARE EXACT. CONFIRMATION OF EXISTENCE AND EXACT LOCATION OF ALL SERVICES MUST BE OBTAINED FROM THE INDIVIDUAL UTILITIES BEFORE PROCEEDING WITH CONSTRUCTION.	
—	LAND DRAINAGE SEWER	⊕	PROPERTY LINE	—	CURB RAMP	▧		
—	SANITARY/COMBINED SEWER	⊕	SURVEY BAR	—	PAVT PLANING/REMOVAL	▨		
—	SSP/DCP	—	FENCE	—				
—	WATERMAIN	—	BOC/EOPAVT	—				
—	SUBDRAIN	—	ELEVATION	—				
—	DITCH	—		—				
—	EXISTING	—	LEGEND - PLAN	—				
—	NEW	—		—				

DESIGNED BY	WJS	CHECKED BY	RPS
DRAWN BY	KJC	APPROVED BY	M
HOR. SCALE	1:250	RELEASED FOR CONSTRUCTION	
VERT. SCALE	AS SHOWN	DATE	07/03/30
DATE	07/03/30		

UMA | AECOM

©2007 UMA ENGINEERING LTD. ALL RIGHTS RESERVED.

PROFESSIONAL'S SEAL

PROVINCE OF MANITOBA
REGISTERED PROFESSIONAL ENGINEER
R.P. BRUCE
0265-393-00_01-CT1006_RX

THE CITY OF WINNIPEG
PUBLIC WORKS DEPARTMENT
TRANSPORTATION ENGINEERING DIVISION

**WINDERMERE AVENUE
BEAUMONT STREET TO DEREK STREET
RECONSTRUCTION**

HORIZONTAL AND VERTICAL ALIGNMENT
FROM 0+330 TO DEREK STREET

CITY DRAWING NUMBER: N/A
SHEET 8 OF 8
DRAWING No. 08
REV 0

BID OPPORTUNITY NO. 224-2007